

# OUTLAW<sup>®</sup>

THE OUTLAW BREAKS THE RULES OF TRADITIONAL MOTORHOMES AND IS ON EVERYONE'S "WANTED LIST".



 **THOR<sup>®</sup>**  
MOTOR COACH



# ***OUTLAW***<sup>®</sup>

You live life at a different pace than the rest of the pack, and breaking from formation is your preferred mode of travel. When that feeling of freedom is beckoning and that urge takes a hold of your spirit, there's only one way to satisfy the craving - with an Outlaw<sup>®</sup>.

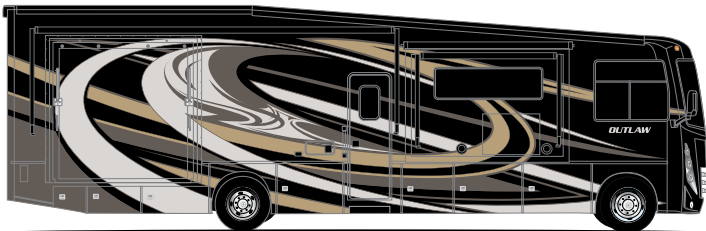


# EXTERIOR OPTIONS

## CLASS A



FULLY LOADED FULL-BODY PAINT



SUPERSTITION FULL-BODY PAINT



THUNDERSTRUCK FULL-BODY PAINT

## CLASS C



ATOMIC RED 



ROCKET BLUE 

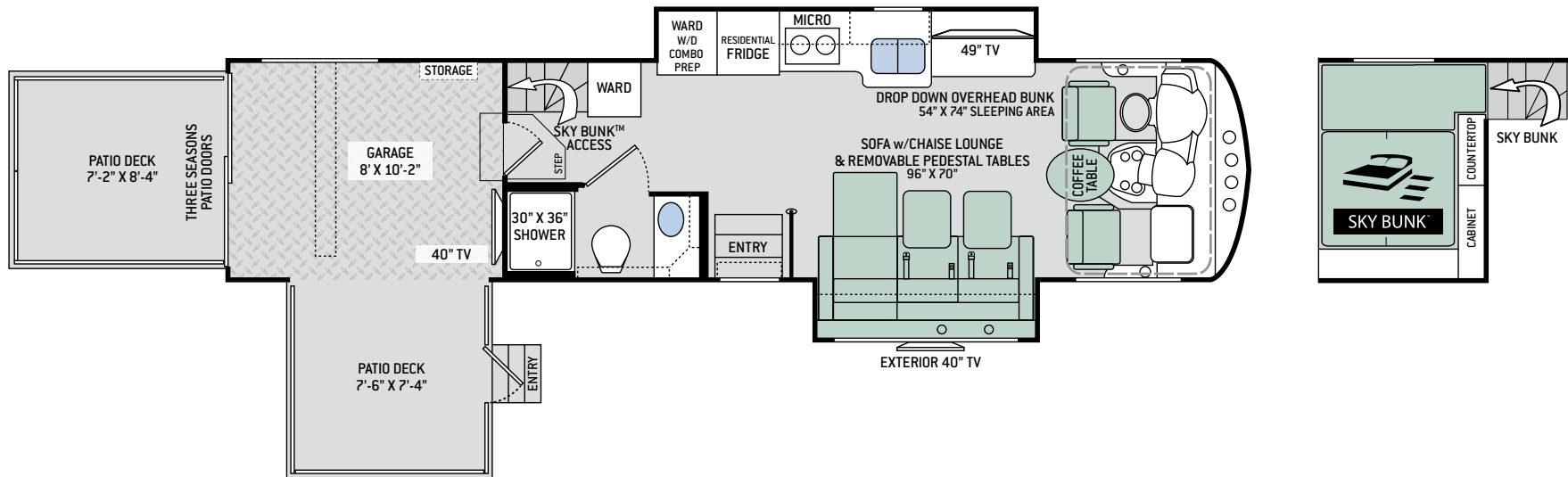






OUTLAW CLASS A PHOTO GALLERY

# FLOOR PLANS



37GP

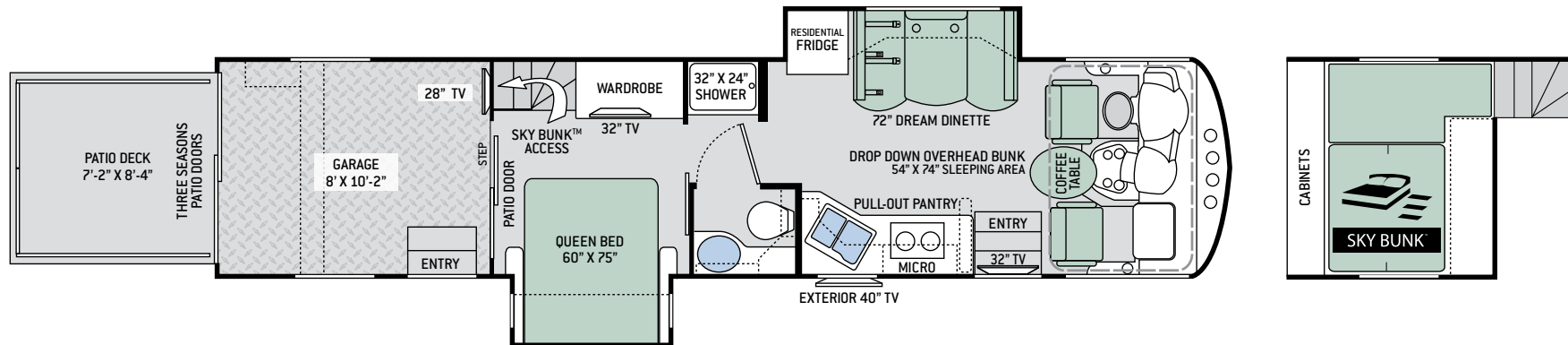


# S P E C I F I C A T I O N S

37GP

<b>CHASSIS</b>	Ford
<b>GROSS VEHICLE (GVWR)</b>	26,000
<b>GROSS COMBINED (GCWR)</b>	30,000
<b>WHEEL BASE</b>	252"
<b>EXTERIOR LENGTH (W/O LADDER)</b>	38'-10"
<b>EXTERIOR HEIGHT (W/AC)</b>	13'-3"
<b>EXTERIOR WIDTH (W/O MIRRORS)</b>	101"
<b>INTERIOR HEIGHT (LIVING AREA)</b>	80" to 97"
<b>AWNING SIZE</b>	7'-6" & 20'
<b>FUEL (GAL)</b>	80
<b>LPG (LBS)</b>	105
<b>FRESH/WASTE/GRAY WATER (GAL)</b>	150 / 43 / 43
<b>WATER HEATER (GAL)</b>	Tankless
<b>FURNACE (BTUS)</b>	35,000
<b>EXTERIOR STORAGE CAPACITY (CU. FT.)</b>	138
<b>GARAGE CAPACITY (CU. FT.)</b>	1,800
<b>PATIO CAPACITY (LBS)</b>	1,500
<b>RAMP CAPACITY (LBS)</b>	3,000
<b>HITCH (LBS)</b>	8,000

# FLOOR PLANS

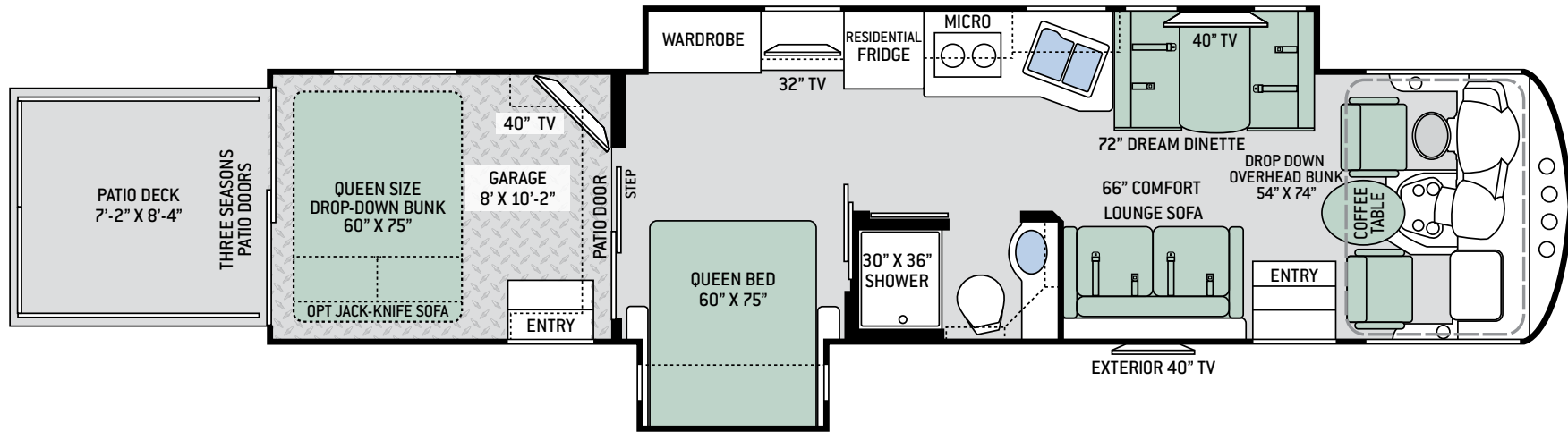


37RB

# S P E C I F I C A T I O N S

	37RB
CHASSIS	Ford
GROSS VEHICLE (GVWR)	26,000
GROSS COMBINED (GCWR)	30,000
WHEEL BASE	252"
EXTERIOR LENGTH (W/O LADDER)	38'-10"
EXTERIOR HEIGHT (W/AC)	13'-3"
EXTERIOR WIDTH (W/O MIRRORS)	101"
INTERIOR HEIGHT (LIVING AREA)	80" to 97"
AWNING SIZE	9' & 13'
FUEL (GAL)	80
LPG (LBS)	105
FRESH/WASTE/GRAY WATER (GAL)	100 / 43 / 43
WATER HEATER (GAL)	Tankless
FURNACE (BTUS)	35,000
EXTERIOR STORAGE CAPACITY (CU. FT.)	127
GARAGE CAPACITY (CU. FT.)	1,800
PATIO CAPACITY (LBS)	1,500
RAMP CAPACITY (LBS)	3,000
HITCH (LBS)	8,000

# FLOOR PLANS



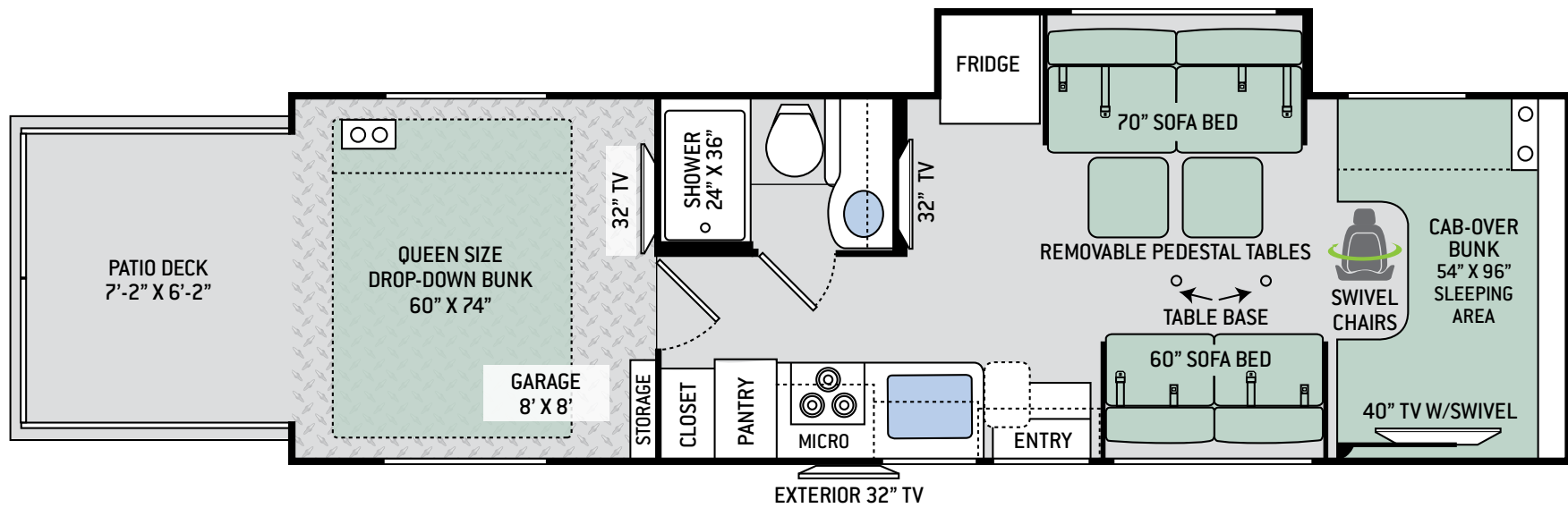
38MB

# S P E C I F I C A T I O N S

38MB

CHASSIS	Ford
GROSS VEHICLE (GVWR)	26,000
GROSS COMBINED (GCWR)	30,000
WHEEL BASE	262"
EXTERIOR LENGTH (W/O LADDER)	39'-9"
EXTERIOR HEIGHT (W/AC)	13'-3"
EXTERIOR WIDTH (W/O MIRRORS)	101"
INTERIOR HEIGHT (LIVING AREA)	80" to 97"
AWNING SIZE	9' & 13'
FUEL (GAL)	80
LPG (LBS)	105
FRESH/WASTE/GRAY WATER (GAL)	100 / 40 / 40
WATER HEATER (GAL)	Tankless
FURNACE (BTUS)	35,000
EXTERIOR STORAGE CAPACITY (CU. FT.)	105
GARAGE CAPACITY (CU. FT.)	1,700
PATIO CAPACITY (LBS)	1,500
RAMP CAPACITY (LBS)	3,000
HITCH (LBS)	8,000

# FLOOR PLANS

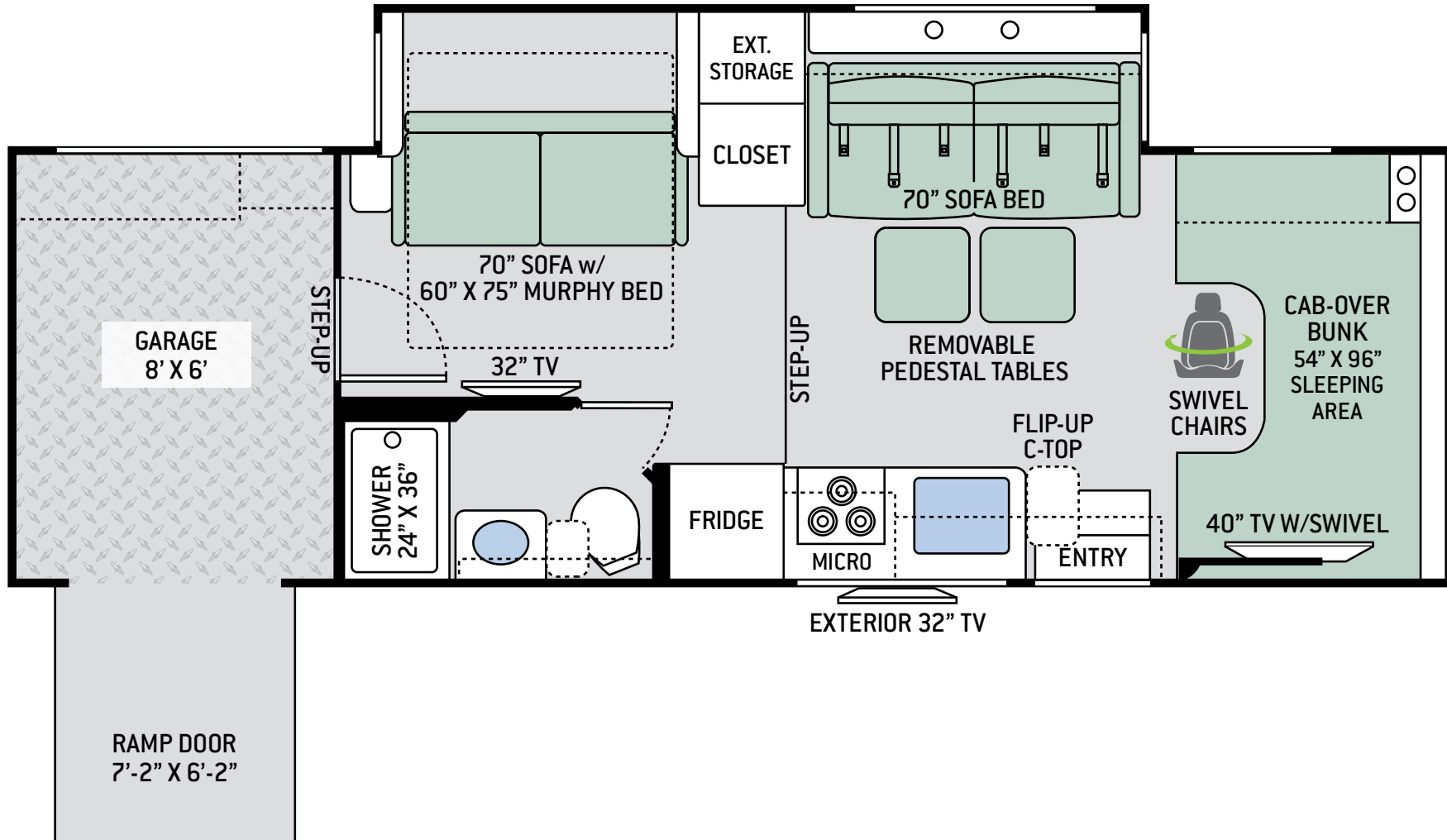


29J

# S P E C I F I C A T I O N S

	29J
<b>CHASSIS</b>	Ford
<b>GROSS VEHICLE (GVWR)</b>	14,500
<b>GROSS COMBINED (GCWR)</b>	22,000
<b>WHEEL BASE</b>	219"
<b>EXTERIOR LENGTH (W/O LADDER)</b>	31'-1"
<b>EXTERIOR HEIGHT (W/AC)</b>	10'-10"
<b>EXTERIOR WIDTH (W/O MIRRORS)</b>	99"
<b>INTERIOR HEIGHT (LIVING AREA)</b>	84"
<b>AWNING SIZE</b>	16'
<b>FUEL (GAL)</b>	55
<b>LPG (LBS)</b>	40.9
<b>FRESH/WASTE/GRAY WATER (GAL)</b>	40 / 30 / 34.5
<b>WATER HEATER (GAL)</b>	Tankless
<b>FURNACE (BTUS)</b>	19,000
<b>EXTERIOR STORAGE CAPACITY (CU. FT.)</b>	17.2 (plus Garage)
<b>GARAGE CAPACITY (LBS)</b>	1,000
<b>PATIO CAPACITY (LBS)</b>	1,500
<b>HITCH (LBS)</b>	8,000

# FLOOR PLANS



29S

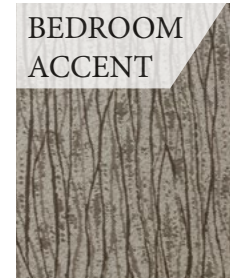
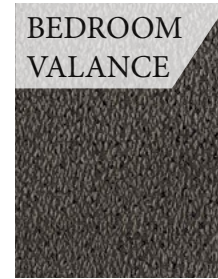
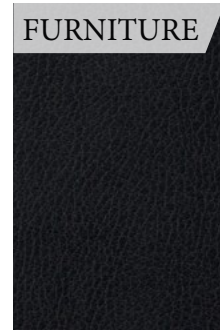


# S P E C I F I C A T I O N S

29S

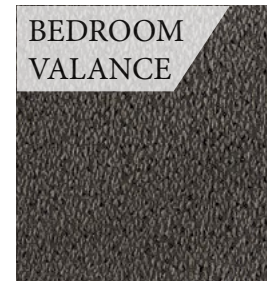
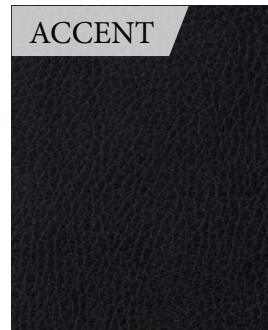
<b>CHASSIS</b>	Ford
<b>GROSS VEHICLE (GVWR)</b>	14,500
<b>GROSS COMBINED (GCWR)</b>	22,000
<b>WHEEL BASE</b>	219"
<b>EXTERIOR LENGTH (W/O LADDER)</b>	31'-1"
<b>EXTERIOR HEIGHT (W/AC)</b>	10'-10"
<b>EXTERIOR WIDTH (W/O MIRRORS)</b>	99"
<b>INTERIOR HEIGHT (LIVING AREA)</b>	84"
<b>AWNING SIZE</b>	20'
<b>FUEL (GAL)</b>	55
<b>LPG (LBS)</b>	40.9
<b>FRESH/WASTE/GRAY WATER (GAL)</b>	39 / 29 / 30
<b>WATER HEATER (GAL)</b>	Tankless
<b>FURNACE (BTUS)</b>	19,000
<b>EXTERIOR STORAGE CAPACITY (CU. FT.)</b>	22 (plus Garage)
<b>GARAGE CAPACITY (LBS)</b>	800
<b>HITCH (LBS)</b>	8,000

# INTERIOR OPTIONS



CLASS A

HEARTBREAKER



CLASS A

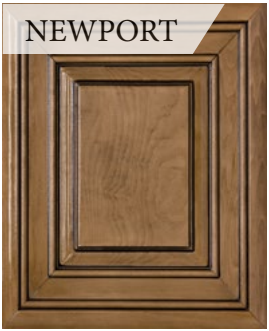
MOONDANCER



CLASS A

TATTOO BLUE

CLASS A



NEWPORT



PACIFIC



KITCHEN COUNTERTOP



BED & BATH COUNTERTOP



FLOORING

CLASS C



BRAZILLIAN CHERRY



MALIBU MAPLE



COUNTERTOPS



FLOORING







OUTLAW CLASS C PHOTO GALLERY

# SPECIAL FEATURES CLASS A



Wifi Ranger® - Wifi Extender



Solar Charge Controller  
Solar Panel Ready



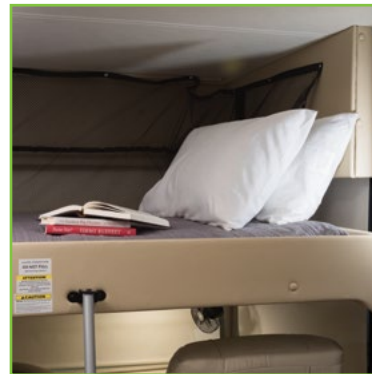
Invisible Front Mask  
Paint Protection



360° Siphon® Vent Cap for  
Tank Odor Prevention



Remote Fuel Filling Station  
with Auxiliary Fuel Tank,  
Pump and Nozzle



Power Drop-Down Hide-Away  
Overhead Bunk  
with Cotton Cloud™  
Mattress & Bunk Ladder



10" Touchscreen Dash  
Radio with Bluetooth®



Drop-Down Zero-G® Ramp  
Door, Snap-In Patio System  
and Power Patio Awning



Girard® Tankless  
Water Heater



Multiplex Wiring Control  
System with 7" Touchscreen



# SPECIAL FEATURES CLASS C



Garage Jumpstart  
Charging Center



Solar Charge Controller  
Solar Panel Ready



Recessed 3-Burner Gas  
Cooktop with Glass Cover



Drop-Down Ramp Door, Patio  
Deck Railings and Manual  
Patio Awning



360° Siphon® Vent Cap for  
Tank Odor Prevention



Anti-bacterial Shower  
Curtain on Curved Rod



Rapid Camp® Wireless  
Control System



Swivel, Leatherette  
Captain's Chairs





Automatic Leveling Jacks with  
Touchpad Controls



8,000-lb. Trailer Hitch with  
7-pin Round Connector



# FEATURED HIGHLIGHTS

## CLASS A

### CONSTRUCTION & EXTERIOR

- » Ford® F-53 Chassis - 6.8L Triton® V10 Engine, 320HP, 460 lb.-ft. Torque - TorqShift® 6-Speed Automatic with Overdrive Transmission
- » Full-Body Paint with Gel Coated Sidewalls & Invisible Front Mask Paint Protection
- » Automatic Leveling Jacks with Touchpad Controls
- » Basement Pass-Through Storage
- » Power Patio Awning with Integrated LED Lighting
- » Frameless Windows
- » Pet-Link™ Multi-Purpose Tie-Down
- » Remote Fuel Filling Station with Auxiliary Fuel Tank, Pump and Nozzle
- » Garage Drop-Down Zero-G® Ramp Door, Snap-In Patio System & Power Patio Awning
- » Camp Side Drop-Down Zero-G® Ramp Door, Snap-In Patio System, Staircase to Ground Level (37GP)
- » Sliding Glass Door & Screen to Camp Side Patio Deck™ (37GP)
- » Three Seasons Patio Doors with Screen & Tinted Privacy Panels
- » 8,000-lb. Trailer Hitch with 7-pin Round Connector

### CONSTRUCTION & EXTERIOR OPTION

- » Frameless Dual Pane Windows

### AUTOMOTIVE & COCKPIT

- » 10" Touchscreen Dash Radio with Bluetooth® and iGo Primo™ Navigation
- » Back-Up Monitor
- » Heated/Remote Exterior Mirrors with Integrated Side View Cameras
- » Reclining/Swivel Leatherette Captain's Chairs with Stow-Away Coffee Table

- » Power Adjustable Driver's Seat
- » Emergency Engine Start Switch
- » Power Solar & Privacy Shades on Windshield
- » Manual Roller Shades on Side Windows
- » 22.5" Tires with Aluminum Wheels
- » Valve Stem Extenders on Rear Wheels
- » Dash Workstation with 110-volt & 12-volt Outlets
- » Power Drop-Down Hide-Away Overhead Bunk with Cotton Cloud™ Mattress & Bunk Ladder

### INTERIOR

- » Leatherette Expanding Sofa Bed with Chaise Lounge (37GP)
- » Leatherette Sofa Bed (38MB)
- » Leatherette Dream Dinette® Booth with Cup Holders (37RB & 38MB)
- » Tread Plate Non-Slip Flooring, Tie Down Rings & Workshelf Storage Cabinet in Garage
- » 12-volt Attic Fan in Garage
- » 11 cu. ft. Double Door Residential Refrigerator
- » 2-Burner Electric Induction Cooktop
- » 30" Over-the-Range Stainless Steel Convection Microwave Oven
- » Solid Surface Countertops & Sink Cover
- » Denver Mattress® Queen Size Bed with Bedspread and Pillow Shams (37RB & 38MB)
- » Denver Mattress® Queen Size Bed Drop-Down Bunk in Garage (38MB)
- » Mattress Covered Sky Bunk™ (37GP & 37RB)
- » Privacy Curtain in Sky Bunk™ (37GP)
- » 49" TV in Living Area (37GP)
- » 40" TV in Living Area (38MB)
- » 32" TV in Living Area (37RB)
- » Blu-Ray Player in Living Area

- » 32" TV in Bedroom (37RB & 38MB)
- » 40" TV in Garage (37GP & 38MB)
- » 28" TV in Garage (37RB)
- » Exterior 40" TV on Manual Swivel with Soundbar
- » TV Ready in Sky Bunk™
- » Power Charging Center for Electronics
- » Wifi Ranger® - Wifi Extender

### INTERIOR OPTIONS

- » Two (2) Opposing Jack-Knife Sofas in Garage (37RB & 38MB)
- » Leatherette Jack-Knife Sofa in the Garage (37GP)

### ELECTRICAL & PLUMBING

- » Onan® RV QG 5500 Gas Generator
- » Automatic Generator Start
- » 50-amp Shoreline Power Cord
- » Multiplex Wiring Control System with 7" Touchscreen
- » Dual 13,500 BTU Low Profile Roof Air Conditioners
- » 5,000 BTU Air Conditioner in Garage (37GP & 37RB)
- » 6,000 BTU Air Conditioner with Remote in Garage (38MB)
- » Four (4) Auxiliary House Batteries
- » 1800-watt Inverter
- » 55-amp Converter
- » Exterior LP Connection
- » Solar Prep - Includes Solar Controller
- » Enclosed & Heated Holding Tanks
- » 360° Siphon RV Holding Tank Vent Cap
- » Black Tank Flush System
- » Outside Shower
- » Washer/Dryer Prep (37GP)

***For a complete listing of available features visit: [thormotorcoach.com/outlaw-class-a](http://thormotorcoach.com/outlaw-class-a).***



## CLASS C

### CONSTRUCTION & EXTERIOR

- » Ford® E-Series Chassis - 6.8L Triton® V10, 305HP & 420 lb.-ft. Torque – TorqShift® 6-Speed Automatic Transmission
- » Automatic Leveling Jacks with Touchpad Controls
- » HD-MAX® Exterior with Graphics Package
- » Power Patio Awning w/Integrated LED Lighting
- » Frameless Windows
- » Drop-Down Ramp Door, Patio Deck Railings & Manual Patio Awning
- » Removable Interior/Exterior Table for Garage & Patio
- » 8,000-lb. Trailer Hitch with 7-pin Round Connector

### AUTOMOTIVE & COCKPIT

- » Touchscreen Dash Radio with Back-Up Monitor
- » SiriusXM® Radio Tuner & Antenna
- » Heated/Remote Exterior Mirrors with Integrated Side View Cameras
- » Swivel Leatherette Captain's Chairs with Filler Cushions
- » Emergency Engine Start Switch
- » Valve Stem Extenders
- » Stainless Steel Wheel Liners

### INTERIOR

- » Leatherette Comfort Lounge Sofa & Removable Pedestal Tables
- » Leatherette Jack-Knife Sofa
- » 12-volt Attic Fan with Cover in Cab-Over
- » Garage USB Charging Port
- » Garage 12-volt Outlet for CPAP Machine
- » Stainless Steel Storage Cabinet in Garage
- » Tread Plate Non-Slip Flooring in Garage
- » Bug Screen Curtain in Garage
- » Queen Size Powered Drop-Down Bunk in Garage
- » Shower with Anti-Bacterial Shower Curtain
- » Double Door Gas/Electric RV Refrigerator with Smoked Acrylic Panel Inserts
- » Recessed 3-Burner Gas Cooktop with Glass Cover
- » Convection Microwave Oven
- » 12-volt Vent in Kitchen
- » 40" TV on Manual Swivel & Blu-Ray Player in Cab-Over
- » 32" TV in Living Area & Garage
- » Exterior 32" TV on Manual Swivel Bracket & Bluetooth® Sound Bar

- » Bluetooth® Coach Radio System in Garage
- » Power Charging Centers for Electronics
- » Wifi Ranger® - Wifi Extender

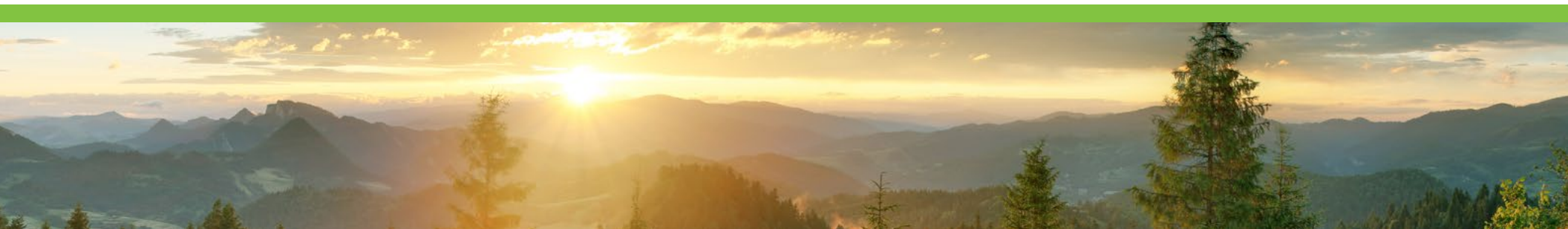
### INTERIOR OPTION

- » Cab-Over Child Safety Net

### ELECTRICAL & PLUMBING

- » Onan® RV QG 4000 Gas Generator
- » 30-amp Shoreline Power Cord
- » 13,500 BTU Front Roof Air Conditioner
- » 5,000 BTU Air Conditioner in Garage
- » Secondary Auxiliary House Batteries
- » 1,000-watt Entertainment Inverter
- » Exterior LP Connection
- » Solar Prep - Includes Solar Controller
- » Black Tank Flush System
- » 360° Siphon RV Holding Tank Vent Cap
- » Holding Tanks with Heat Pads
- » Rapid Camp® Wireless Control System

***For a complete listing of available features visit: [thormotorcoach.com/outlaw-class-c](http://thormotorcoach.com/outlaw-class-c).***





**Made to fit.**

**IMPORTANT—PLEASE READ:** This brochure reflects product design, fabrication, material, components and specifications at the date of printing, which date is disclosed below. Please visit us online at [ThorMotorCoach.com](http://ThorMotorCoach.com) or consult with your selling dealership for the latest in standards, options, specification and technical information. Photographs in the brochure may depict optional equipment or may only be available in certain floor plans. Components, appliances and the chassis may have been manufactured in a calendar year before the vehicle's designated model year. All capacities are approximate. The actual length of the vehicle may differ from that indicated in the brochure due to variances in the manufacturing processes and/or installed components. All dry weights are based on standard model features and do not include optional features or equipment. Component part and appliance manufacturers issue limited warranties covering portions of the vehicle not covered under the limited warranty we issue. Copyright Thor Motor Coach, Inc. © OH 10/01/18



[thormotorcoach.com/outlaw](http://thormotorcoach.com/outlaw)

P.O. Box 1486, Elkhart, IN 46515 Sales Department: 800.860.5658 Customer Service: 877.855.2867