

OMNI[®]

DESIGNED FOR THE OPEN ROAD, CRAFTED
FOR LIVING IN COMFORT, BUILT FOR YOU.
THE OMNI™ FROM THOR MOTOR COACH.
WELCOME HOME.



Made to fit.

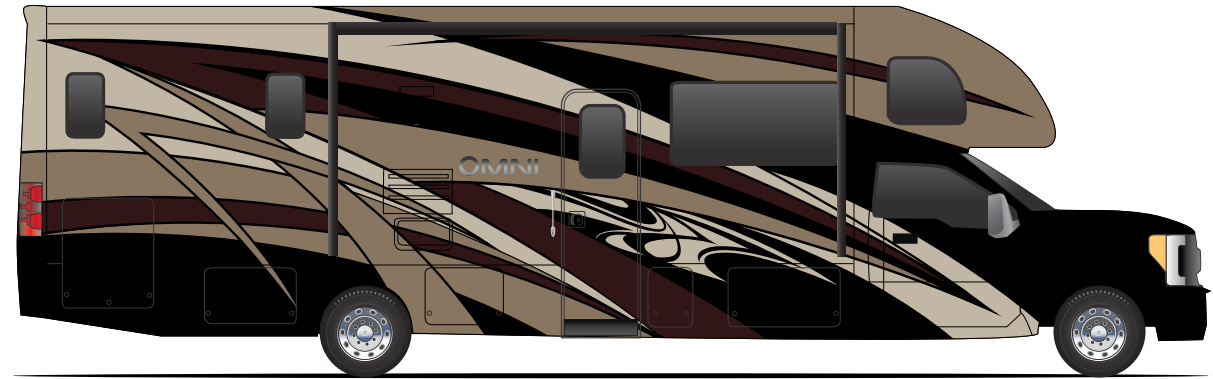


OMNI[®]

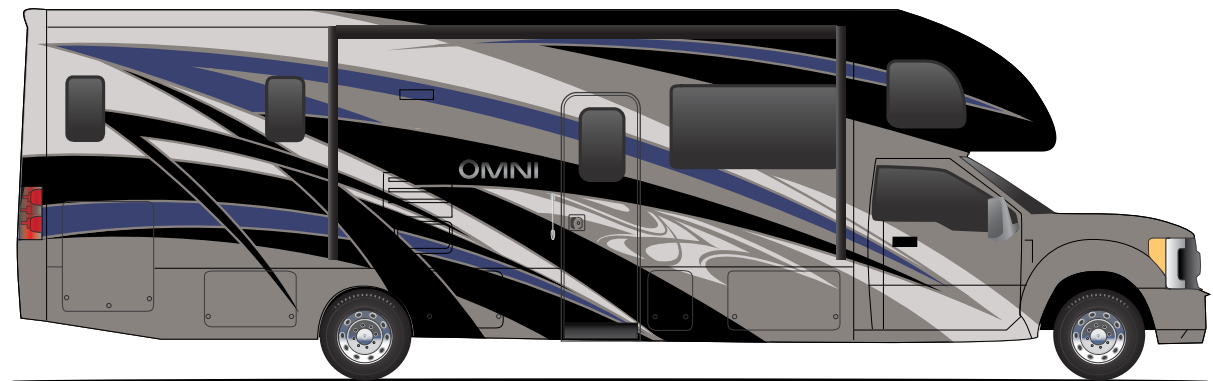
There's no set path in life, it is what you make it, so why not make it unforgettable. And with available 4 wheel drive, the Omni[®] can take you down new paths, where you'll discover how travel was meant to be. Don't follow the path, create your own in a 2020 Omni from Thor Motor Coach.



EXTERIOR OPTIONS



MADERA CANYON FULL-BODY PAINT

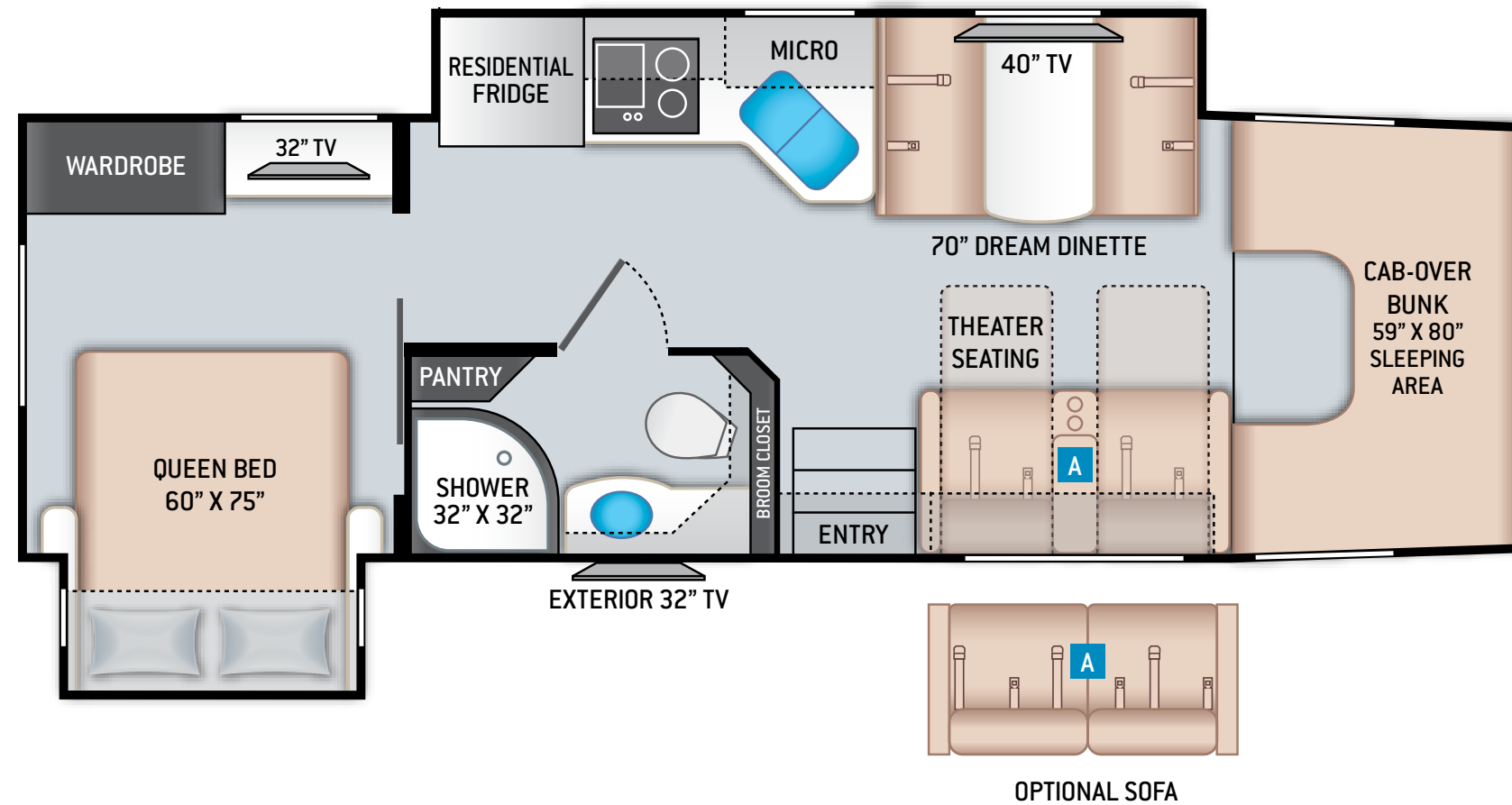


SAHARA SLATE FULL-BODY PAINT





FLOOR PLANS

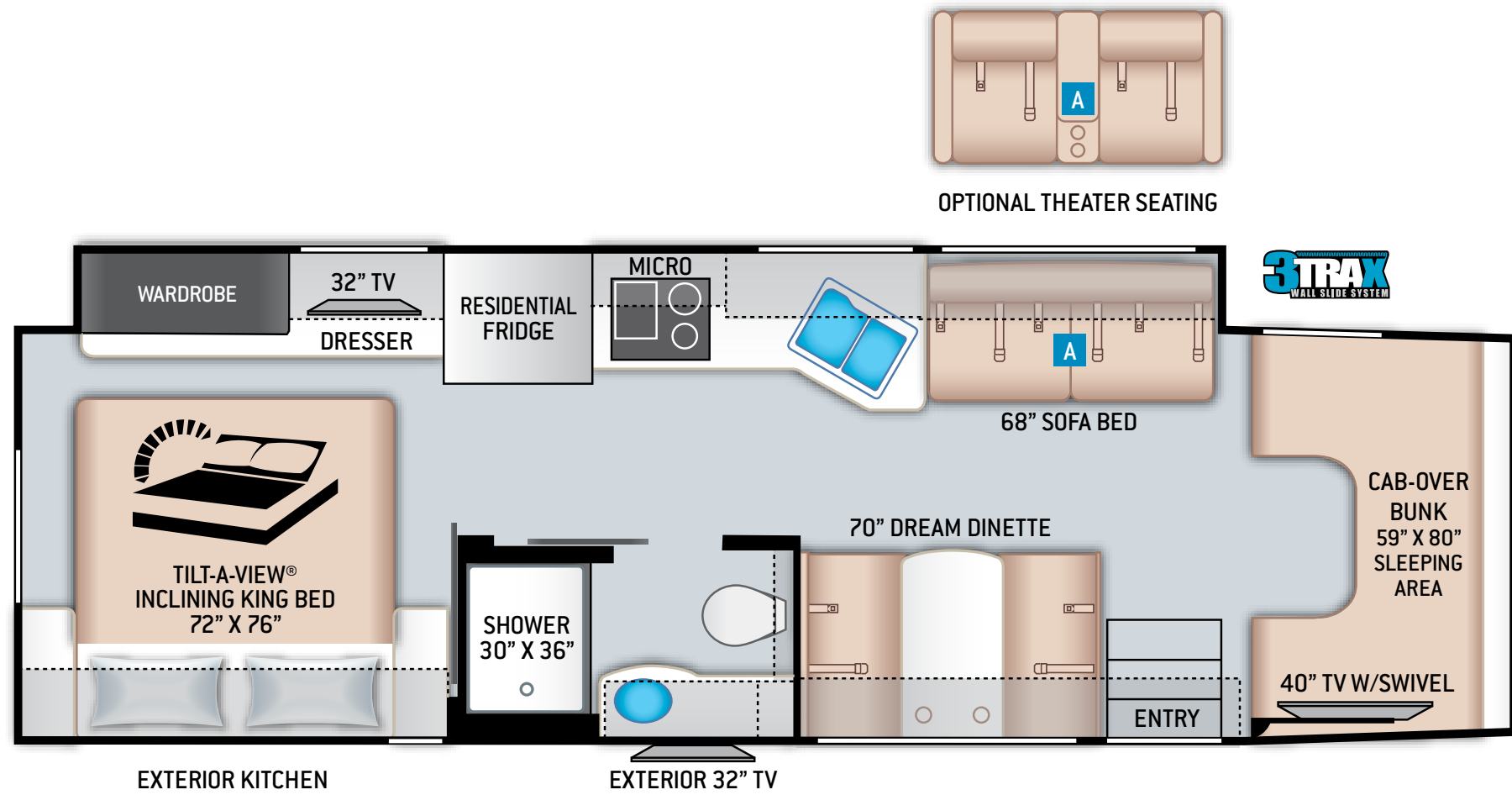


XG32

SPECIFICATIONS XG32

CHASSIS	Ford
GROSS VEHICLE (GVWR)	19,500
GROSS COMBINED (GCWR)	35,000
WHEEL BASE	227"
EXTERIOR LENGTH (W/O LADDER)	33'-6"
EXTERIOR HEIGHT (W/AC)	12'-6"
EXTERIOR WIDTH (W/O MIRRORS)	99"
INTERIOR HEIGHT (LIVING AREA)	84"
AWNING SIZE	14'
FUEL (GAL)	28(F) / 40(R)
LPG (LBS)	68.2
FRESH/WASTE/GRAY WATER (GAL)	75 / 40 / 47
WATER HEATER (GAL)	Tankless
FURNACE (BTUS)	30,000
EXTERIOR STORAGE CAPACITY (CU. FT.)	78
HITCH WEIGHT RATING (LBS)	10,000

FLOOR PLANS

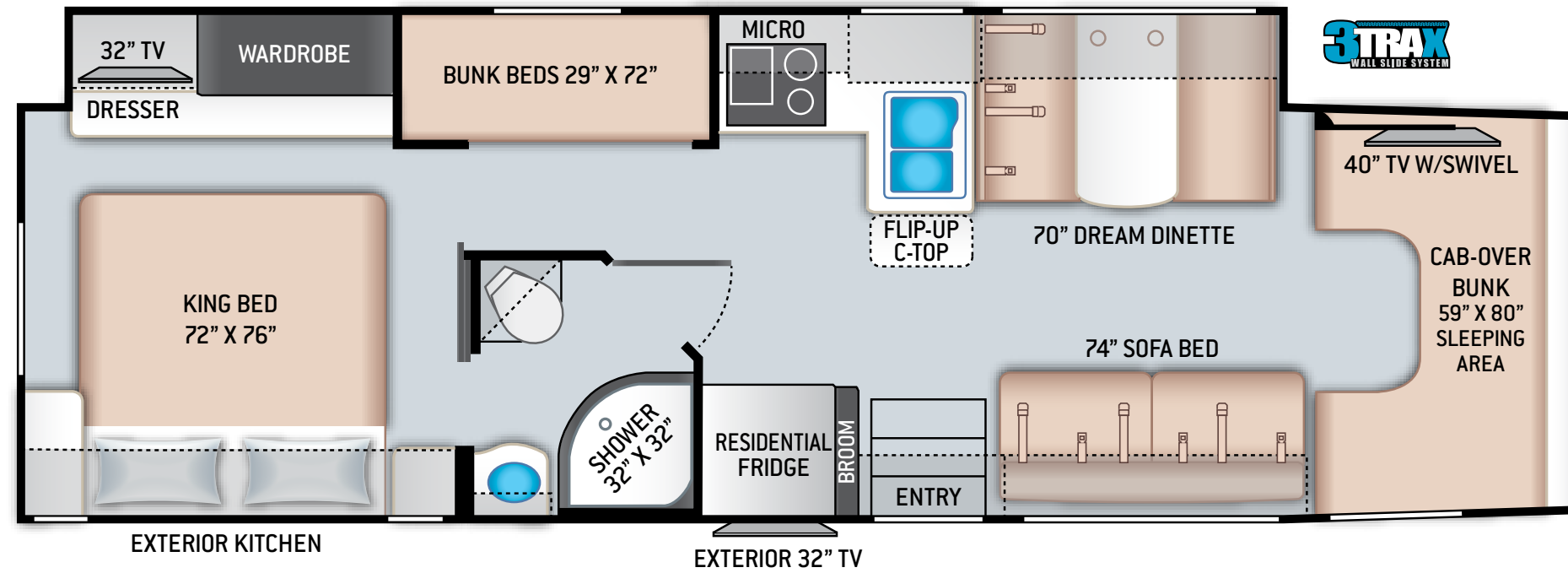


SV34

SPECIFICATIONS SV34

CHASSIS	Ford
GROSS VEHICLE (GVWR)	19,500
GROSS COMBINED (GCWR)	35,000
WHEEL BASE	249"
EXTERIOR LENGTH (W/O LADDER)	35'-6"
EXTERIOR HEIGHT (W/AC)	12'-6"
EXTERIOR WIDTH (W/O MIRRORS)	99"
INTERIOR HEIGHT (LIVING AREA)	84"
AWNING SIZE	20'
FUEL (GAL)	28(F) / 40(R)
LPG (LBS)	68.2
FRESH/WASTE/GRAY WATER (GAL)	65 / 40 / 40
WATER HEATER (GAL)	Tankless
FURNACE (BTUS)	30,000
EXTERIOR STORAGE CAPACITY (CU. FT.)	78
HITCH WEIGHT RATING (LBS)	10,000

FLOOR PLANS



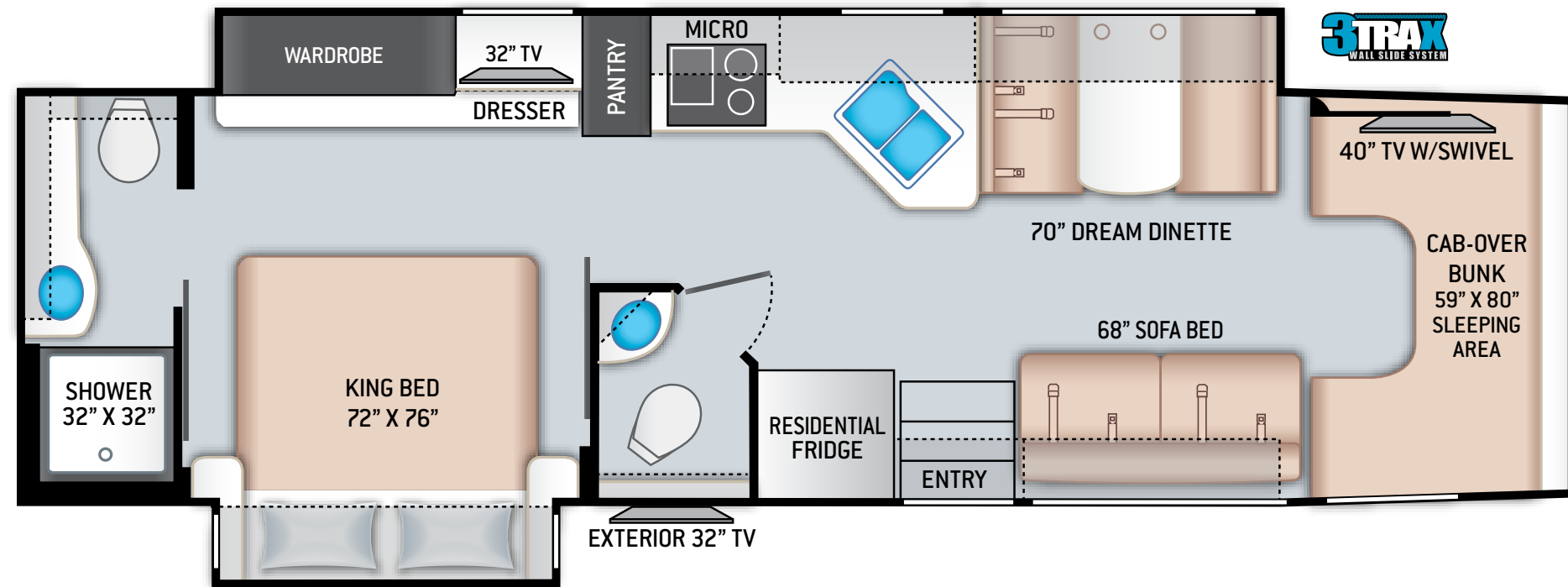
BB35

SPECIFICATIONS

BB35

CHASSIS	Ford
GROSS VEHICLE (GVWR)	19,500
GROSS COMBINED (GCWR)	35,000
WHEEL BASE	249"
EXTERIOR LENGTH (W/O LADDER)	36'-8"
EXTERIOR HEIGHT (W/AC)	12'-6"
EXTERIOR WIDTH (W/O MIRRORS)	99"
INTERIOR HEIGHT (LIVING AREA)	84"
AWNING SIZE	20'
FUEL (GAL)	28(F) / 40(R)
LPG (LBS)	68.2
FRESH/WASTE/GRAY WATER (GAL)	75 / 40 / 40
WATER HEATER (GAL)	Tankless
FURNACE (BTUS)	30,000
EXTERIOR STORAGE CAPACITY (CU. FT.)	93
HITCH WEIGHT RATING (LBS)	10,000

FLOOR PLANS



BH35

SPECIFICATIONS BH35

CHASSIS	Ford
GROSS VEHICLE (GVWR)	19,500
GROSS COMBINED (GCWR)	35,000
WHEEL BASE	259"
EXTERIOR LENGTH (W/O LADDER)	36'-10"
EXTERIOR HEIGHT (W/AC)	12'-6"
EXTERIOR WIDTH (W/O MIRRORS)	99"
INTERIOR HEIGHT (LIVING AREA)	84"
AWNING SIZE	14'
FUEL (GAL)	28(F) / 40(R)
LPG (LBS)	68.2
FRESH/WASTE/GRAY WATER (GAL)	75 / 40F-31R / 40
WATER HEATER (GAL)	Tankless
FURNACE (BTUS)	30,000
EXTERIOR STORAGE CAPACITY (CU. FT.)	116
HITCH WEIGHT RATING (LBS)	10,000

INTERIOR OPTIONS



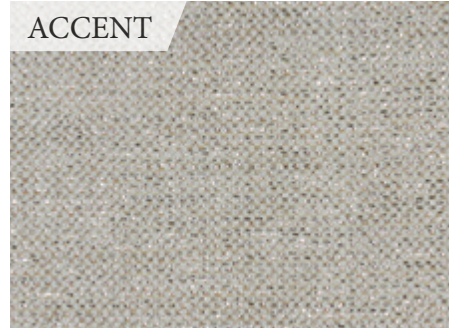
VALANCE & PILLOW



VALANCE & PILLOW



VALANCE & PILLOW



ACCENT



ACCENT



ACCENT



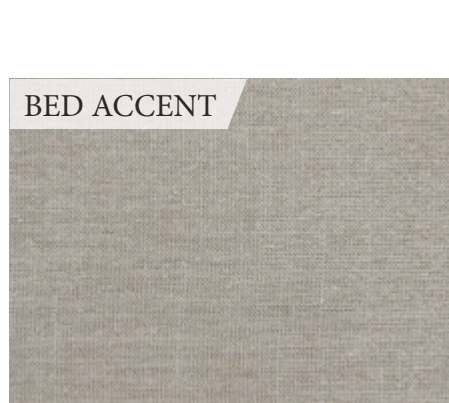
BEDSPREAD



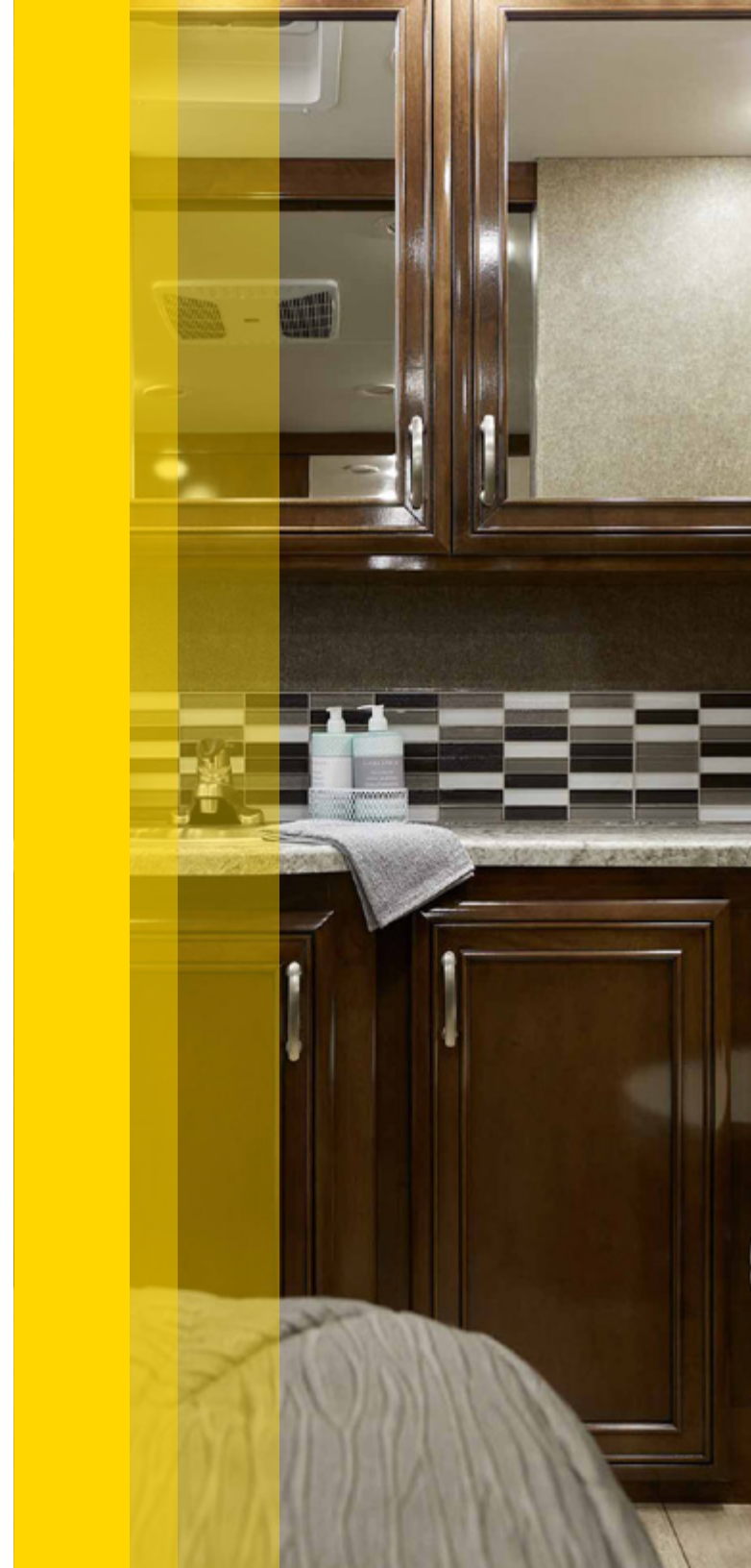
BEDSPREAD



BED ACCENT



BED ACCENT





SPECIAL FEATURES



Winegard® Connect™ 2.0 4G LTE Router and WiFi Extender



Tankless Water Heater



All Weather Cab Floor Mats



Solar Prep - Includes Solar Controller



360° Siphon® Vent Cap for Tank Odor Prevention



Pop-Up Kitchen Outlet



Bedroom 110V Outlet on Inverter for CPAP Machine



10,000-lb. Trailer Hitch with 7-pin Round Connector



FEATURED HIGHLIGHTS

CONSTRUCTION & EXTERIOR

- ◆ Ford® F-550 Chassis – 6.7L Power Stroke® 4x2 Turbo Diesel, 330HP & 750 lb.-ft. Torque – TorqShift® 6-Speed SelectShift® Automatic Transmission (BB35 & BH35)
- ◆ Ford® F-550 Chassis – 6.7L Power Stroke® 4x4 Turbo Diesel, 330HP & 750 lb.-ft. Torque – TorqShift® 6-Speed SelectShift® Automatic Transmission (XG32 & SV34)
- ◆ Welded Tubular Steel Floor
- ◆ Welded Tubular Aluminum Roof & Sidewall Cage Construction
- ◆ Premium One-Piece TPO Roof
- ◆ Full-Body Paint Package with Gel Coated Sidewalls
- ◆ Invisible Front Paint Protection
- ◆ Automatic Leveling Jacks with Touchpad Controls
- ◆ Rotocast Storage Compartments
- ◆ Flush Mount Radius Luggage Doors
- ◆ Power Patio Awning with Integrated LED Lighting
- ◆ Powered Sky View Shade in Cab Overhead
- ◆ Slideout Room Awnings
- ◆ Roof Ladder
- ◆ Patio Light
- ◆ Electric Entry Step
- ◆ Automatic Courtesy Lights Over Cab Entry
- ◆ Frameless Windows
- ◆ 10,000-lb. Trailer Hitch with 7-pin Round Connector

AUTOMOTIVE & COCKPIT

- ◆ Touchscreen Dash Radio with SYNC® 3, Navigation, 911 Assist, AppLink and Smart-Charging USB ports
- ◆ Heated/Remote Exterior Mirrors
- ◆ Rearview Mirror with Back-up Monitor
- ◆ Side View Camera System
- ◆ Emergency Engine Start Switch
- ◆ Adjustable Driver & Passenger Captain's Chairs with Center Armrests
- ◆ Adjustable Accelerator & Brake Pedals
- ◆ Power Windows & Door Locks
- ◆ Cruise Control
- ◆ Tilt Steering Wheel
- ◆ Map Light
- ◆ Keyless Entry System
- ◆ All Weather Cab Floor Mats
- ◆ Windshield Privacy Curtain
- ◆ Fiberglass Running Boards
- ◆ Valve Stem Extenders
- ◆ Aluminum Wheels

INTERIOR

- ◆ Rubber Tread Entry Steps with Lighted Step Well & Entry Grab Handle
- ◆ Residential Vinyl Flooring Throughout
- ◆ 84" Interior Ceiling Height

- ◆ Soft Touch Vinyl Ceiling
- ◆ LED Lighting
- ◆ Ceiling Ducted Air Conditioning System
- ◆ Hardwood Veneer Paneling in Select Areas
- ◆ High-Gloss Glazed Cabinetry with Solid Wood Flat Panel Cabinet Doors, Hidden Hinges & Brush Nickel Finish Hardware
- ◆ Window Solar & Privacy Roller Shades in Living Room
- ◆ Power Sky View Shade in Cab Overhead
- ◆ Leatherette Dream Dinette® Booth with Cup Holders
- ◆ Pressed Laminate Countertops in Select Areas
- ◆ Leatherette Theater Seating with Incliners & Footrests (XG32)
- ◆ Leatherette Sleeper Sofa (SV34, BB35 & BH35)

INTERIOR OPTION

- ◆ Leatherette Sleeper Sofa (XG32)
- ◆ Leatherette Theater Seating with Incliners & Footrests (SV34)
- ◆ Single Child Safety Tether in Dinette

KITCHEN

- ◆ Stainless Steel Residential Refrigerator with Ice Maker
- ◆ 2-Burner High-Output Gas Range with Single Induction Cooktop
- ◆ Stainless Steel 30" Over-the-Range Convection Microwave Oven
- ◆ Solid Surface Countertops & Sink Covers
- ◆ Decorative Tile Backsplash

- ◆ Stainless Steel Double Bowl Sink with Single Handle Faucet & Pull-Down Sprayer
- ◆ Pop-Up Countertop Outlet
- ◆ Pantry (XG32 & BH35)
- ◆ Waste Basket
- ◆ 12-volt High Capacity Power Vent with Cover

BEDROOM & BATHROOM

- ◆ King Size Bed (SV34, BB35 & BH35)
- ◆ Queen Size Bed (XG32)
- ◆ Tilt-A-View® Inclining Bed Mechanism (SV34)
- ◆ Headboard, Bedspread & Pillow Shams
- ◆ Bedroom 110-volt Outlet on Inverter for CPAP Machine
- ◆ Window Privacy Shades in Bedroom
- ◆ Bunk Beds in Hallway Slideout (BB35)
- ◆ Shower with Obscure Glass Door
- ◆ Stainless Steel Bathroom Sink
- ◆ Foot Flush Porcelain Toilet
- ◆ Power Bath Vent

ENTERTAINMENT

- ◆ 40" TV on Manual Swivel in Cab-Over (SV34, BB35, & BH35)
- ◆ 40" LED TV in Living Area (XG32)

- ◆ Blu-Ray Player in Living Area
- ◆ 32" TV in Bedroom
- ◆ Two (2) 15.5" TVs & DVD Player in Bunk Bed Area (BB35)
- ◆ Exterior 32" TV on Manual Swivel with Sound Bar
- ◆ Bluetooth® Coach Radio System in Bedroom
- ◆ Cable TV Ready
- ◆ Digital TV Antenna
- ◆ Winegard® Connect™ WiFi Extender +4G
- ◆ USB Charging Ports - Bedroom & Living Area
- ◆ Exterior Kitchen with 2.5 cu. ft. Refrigerator & Sink (SV34 & BB35)

ENTERTAINMENT OPTION

- ◆ Front Entertainment Center 49" TV with Blu-Ray Player & Sound Bar (SV34, BB35 & BH35)

ELECTRICAL & PLUMBING

- ◆ Onan® RV QD 6000 Diesel Generator
- ◆ Automatic Generator Start
- ◆ 50-amp Detachable Shoreline Power Cord

- ◆ Automatic Shoreline-to-Generator Transfer Switch
- ◆ 1800-watt Inverter

- ◆ Dual 13,500 BTU Roof Air Conditioners
- ◆ Dual Auxiliary House Batteries with Battery Tray - Holds up to Four (4) Batteries
- ◆ Battery Disconnect Switch
- ◆ Solar Prep - Includes Solar Controller
- ◆ Rapid Camp+® Multiplex Wiring Control System with 7" Touchscreen
- ◆ Whole Coach Water Filtration System
- ◆ Tankless Water Heater
- ◆ Water Heater Bypass System
- ◆ Enclosed & Heated Holding Tanks (XG32 & BH35)
- ◆ Enclosed Holding Tanks with Heat Pads (SV34 & BB35, BH35 - Rear Tank)
- ◆ Black Tank Flush System
- ◆ 360° Siphon® RV Holding Tank Vent Cap
- ◆ Exterior LP Connection
- ◆ Outside Shower
- ◆ Systems Control Center

For a complete listing of available features visit thormotorcoach.com/omni.





Made to fit.

IMPORTANT—PLEASE READ: This brochure reflects product design, fabrication, material, components and specifications at the date of printing, which date is disclosed below. Please visit us online at ThorMotorCoach.com or consult with your selling dealership for the latest in standards, options, specification and technical information. Photographs in the brochure may depict optional equipment or may only be available in certain floor plans. Components, appliances and the chassis may have been manufactured in a calendar year before the vehicle's designated model year. All capacities are approximate. The actual length of the vehicle may differ from that indicated in the brochure due to variances in the manufacturing processes and/or installed components. All dry weights are based on standard model features and do not include optional features or equipment. Component part and appliance manufacturers issue limited warranties covering portions of the vehicle not covered under the limited warranty we issue. Copyright Thor Motor Coach, Inc. © OH 01/06/20



thormotorcoach.com/omni

P.O. Box 1486, Elkhart, IN 46515 Sales Department: 800.860.5658 Customer Service: 877.855.2867