

08 SUNCRUISER





SMARTSPACE
WEB

LIVE IN LUXURY.

Modern innovation and design let you bring the comforts of home with you wherever you go in the 2008 Itasca Suncruiser®. New features and six contemporary models make it the smart choice in Class A motor homes. Our SmartSpace™ design philosophy ensures each model makes the most of the available space and a 7'2.5" ceiling height provides a comfortable interior

for any traveler. Take pride in your kitchen with beautiful mission-style cabinetry and Corian® solid-surface countertops, and relax in the soft comfort of available UltraLeather™ furniture. With these upscale amenities, and even an available electric fireplace in the 38T, the 2008 Itasca Suncruiser promises you the ultimate in Class A comfort throughout your travels.

COMFORT FOOD

Great meals start in a galley that makes preparation easy. You'll find all the comforts of home, and then some, including Corian solid-surface countertops, a microwave/convection oven, a three-burner range top and a fan. Other stylish touches such as indirect lighting and a decorative backsplash make you proud to call the SunCruiser home.

There is plenty of storage, including drawers beneath the range top. You can choose an oven, instead, for more cooking flexibility. Upgrade to the four-door refrigerator/freezer for increased cold storage. A water filtration system with a dedicated faucet comes standard for crystal-clear drinking water no matter where you are.

Depending on the model you select, you'll have the choice of a freestanding table with drop leaves or the BenchMark® full-comfort dinette. They fit nicely into the spacious, flat-floor slideout. A unique sofa/dinette is featured on the 38T. It has a tabletop with a flip-up leaf for extra seating and is available in UltraLeather.

WEB Select a Key Feature

The **WEB** icon designates a Winnebago Industries Key Feature. For further in-depth information and photos, use the Drop-down Menu or click on the 'Key Features' page at winnebagoind.com.



38T The forward-galley design of the 38T allows for one of the largest living areas in its class. Vinyl tile floorcovering in the galley looks great and is easy to clean.



FULL-EXTENSION DRAWER SLIDES Drawers are sized to maximize storage, hold tight with positive latches and open fully for easy access to stored items.



WEB titaniumTOUCH™

The refrigerator features Titanium Touch™ stainless finish doors, a Winnebago Industries® exclusive, which has the look of stainless steel, resists fingerprints and is warmer to the touch than traditional stainless steel. As an added benefit, you can even use your favorite kitchen magnets.



START LIVING

However you choose to relax, you'll find yourself at home in the SunCruiser. Put your feet up as you lounge in custom Stitchcraft furniture covered in available UltraLeather. A reclining Euro Chair is also an option and can be a great place to read a book or watch your favorite movie.

The Home Theater Sound System fills the room with life-like movie sounds from the DVD player. Add the King-Dome® digital in-motion satellite system for more channels and more options on the road. A 600-watt inverter can be added to keep your entertainment center running without shoreline or generator power.

The Home Comfort Plus Package comes standard on all models, providing an auxiliary automotive heater, roof vents with power lift and a remote wall switch, and a heat pump that can warm your coach on cool mornings without using the LP furnace.

WEB **REST EASY®** This multi-position lounge glides from a couch to a recliner to a comfortable bed at the touch of a button.



WEB **BenchMark®** This full-comfort dinette features innerspring cushions, seats that reveal large easy-to-use storage compartments and a standard child safety-seat tether. It even converts easily into a comfortable bed (NA 38J).



ENTERTAINMENT Watch your favorite programs on the 32" LCD TV (37B, 38J and 38T) or 27" LCD TV (33V, 35A and 35L) as you recline in the available Euro Chair (38T shown), which can be moved when the coach is parked.

A BETTER BEDROOM

Stretch out in a bedroom with a full slideout and an available queen-size Sleep Number® bed. A king-size bed is available in the 35L so you can truly sleep like royalty.

Wake up to the morning news on the 20" flat-face TV (24" in the 37B). It connects to the available satellite system to give you even more channels. A rear stereo system is also available, including an AM/FM radio, CD/DVD player, an MP3 input and an alarm clock.

The bathroom has a spacious design that allows for more storage and an abundance of residential features. In the shower, the temperature remains constant even if the water pressure fluctuates, thanks to the Moen Posi-Temp® valve.



38T Harbor Lights with Sierra Maple



38T Harbor Lights with Sierra Maple

BEDROOM You'll find plenty of storage in the cedar-lined wardrobe and in a compartment beneath the bed. An in-room sink with a mirror comes in handy when it's time to get ready for bed in the 38T.

sleep  number
by SELECT COMFORT



WEB SLEEP NUMBER BED®

The available Sleep Number bed by Select Comfort™ includes digital hand controls that let you quickly adjust the firmness of each side of the mattress to your Sleep Number — Your Key to a Better Night's Sleep™.



SHOWER

The shower offers a flexible showerhead, available fold-down seat and an elegant faux-Ivory Marble shower surround.



WASHER/DRYER Do laundry in the comfort of your motor home when you add this washer/dryer (NA 33V and 35L w/king bed).

DRIVE SAFELY

You'll be cradled in comfort during long trips thanks to UltraLeather high-back cab seats and a six-way power pedestal for the driver. Powered sunvisors adjust without you having to leave your seat.

The driver and passenger will also enjoy the RV Radio®. It includes AM/FM stereo, CD player, weather band and an auxiliary iPod/MP3 input. Gain better control with large, easy-to-use buttons and knobs and two remotes: one located on the steering wheel and one handheld that allows you to enjoy the RV Radio when parked. Upgrade your RV Radio with the available Sirius® Satellite radio package. Sirius brings you 130 channels of crystal clear programming and a free six-month subscription.

Features like the rearview monitor with one-way audio put you at ease behind the wheel. The available video camera system is activated by your turn signals and allows the driver to view the sides of the coach through the rearview monitor system for added peace of mind when turning and maneuvering.



DASH Controls are conveniently positioned, including the RV Radio with the available Sirius Satellite package, which is iPod ready so you can listen to, and control, your iPod while you drive.



DRIVER'S SEAT A six-way power pedestal adjusts to fit any driver.

DASH WORKSTATION

This sturdy surface is great for laptops and hides a convenient storage compartment.

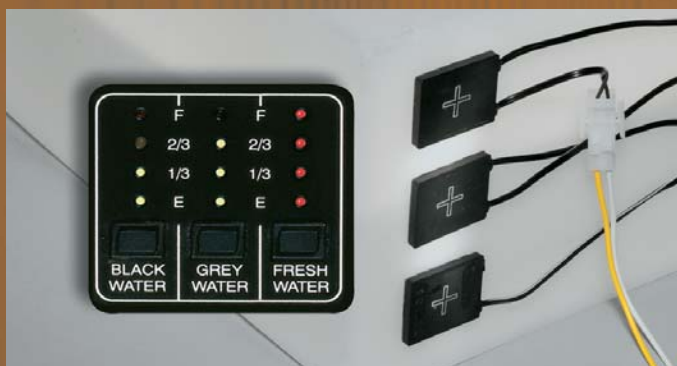


WEB ONE PLACE®

This complete systems center places frequently used switches, gauges and controls in one convenient location.



WEB TRUEAIR This residential central air conditioning system cools 40 percent faster and runs 10 percent quieter than roof airs. The key is a Coleman-Mach® cooling unit located in the basement for a lower vehicle profile.



WEB TRUELEVEL Eliminate tank-level guesswork with our exclusive TrueLevel™ holding liquid monitoring system. It incorporates detector cells that sense liquid levels from outside the tank. No probes means no more corrosion, just accurate readings time after time.



WEB POWERLINE This energy management system monitors electrical usage and automatically cycles postponable appliances on and off to prevent campground circuit overloads.

LOOK SHARP

The Suncruiser's interior beauty is reflected outside with available full-body paint and stylish front and rear caps. A 5,000-lb. hitch[®] with seven-pin wiring connector makes it easy to bring your favorite towables. The side mirrors have a breakaway design that provides extra clearance at the campground or in storage.

Once you've settled on a spot, the hydraulic leveling jacks with three position controls will have your coach level in seconds. You'll be relaxing beneath the awning in no time.

Don't worry about crawling on your hands and knees to unload your gear. The StoreMore[®] slideout system allows the storage bays to extend with the slideroom for easy access.

Hookups are a snap in the service center featuring colored labels and the QuickPort[®] service connection hatch. There is also a convenient wash station for quick cleanups. The electrical center contains a connection for a portable satellite system.



LOOK SHARP Available full-body paint gives your Suncruiser a striking exterior.



EXTERIOR ENTERTAINMENT CENTER

Bring your entertainment outdoors with the exterior entertainment center, which includes an AM/FM radio with remote, CD player, speakers, 12-volt powerpoint and 110-volt outlet.



WEB STOREMORE The storage compartments extend with the slideroom for easy access.



WEB

QuickPort

The QuickPort[®] hatch in the service center allows hookups to stay connected with the bay door closed.



WEB QuickCONNECT The QuickConnect[®] coupling valve provides quick, clean and easy connection to the dumpsite.



WEB **3 position controls**

Raise and lower the hydraulic jacks from any of three convenient locations. Do the job from the driver's seat or step outside and use the controls at the entrance door or service center to monitor the jacks as you lower them. No hassle. No guesswork. Just a level coach at your convenience.

08 SUNCRUISER FLOORPLANS



Carpet

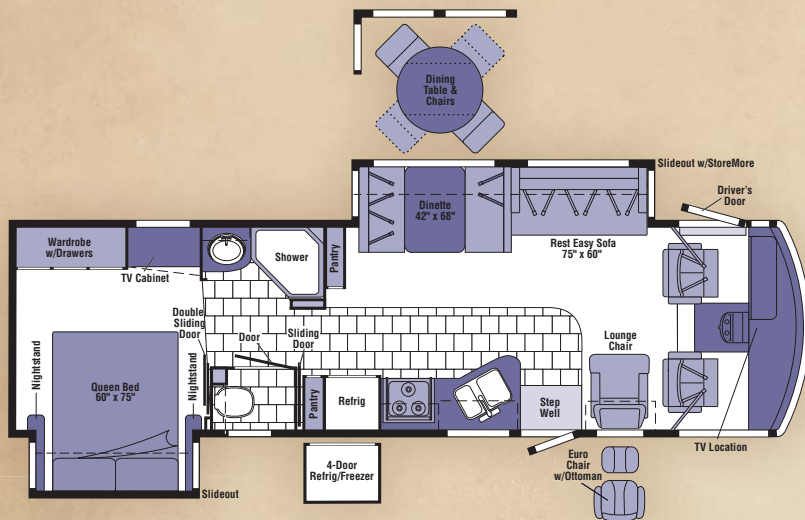


Vinyl Tile
Floorcovering

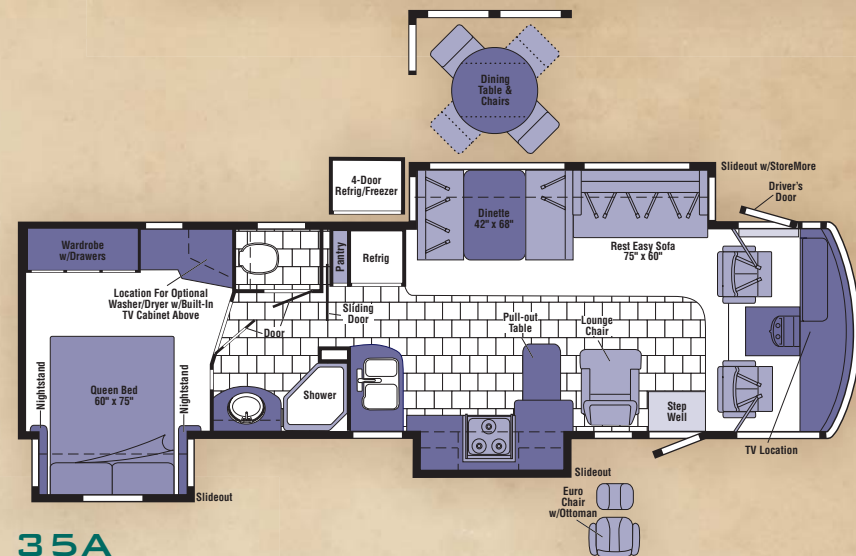


Seat
Belts

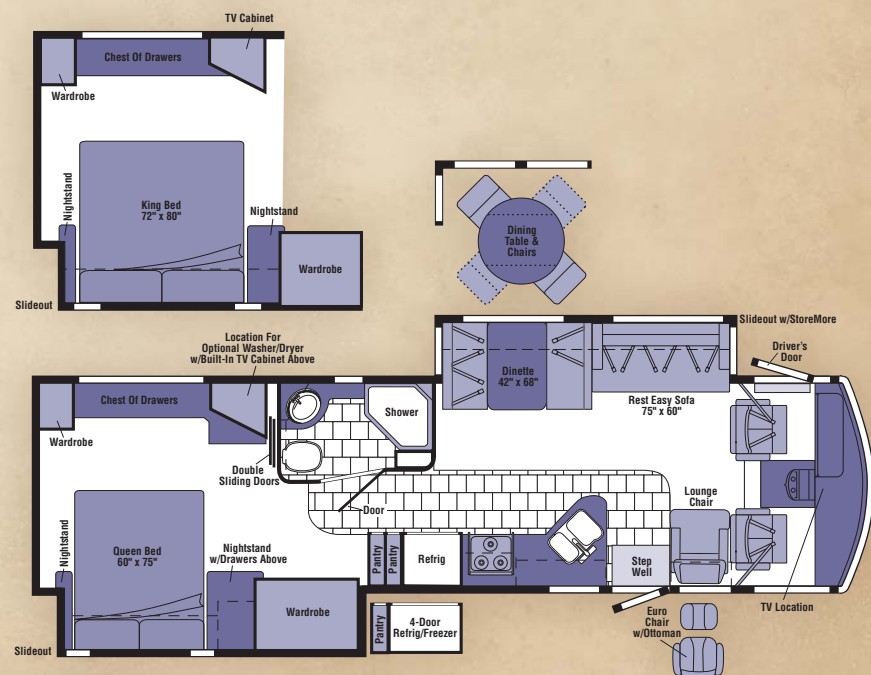
Note: Dimensions shown are for sleeping space only and may vary due to styling differences. Dashed lines denote overhead storage areas.



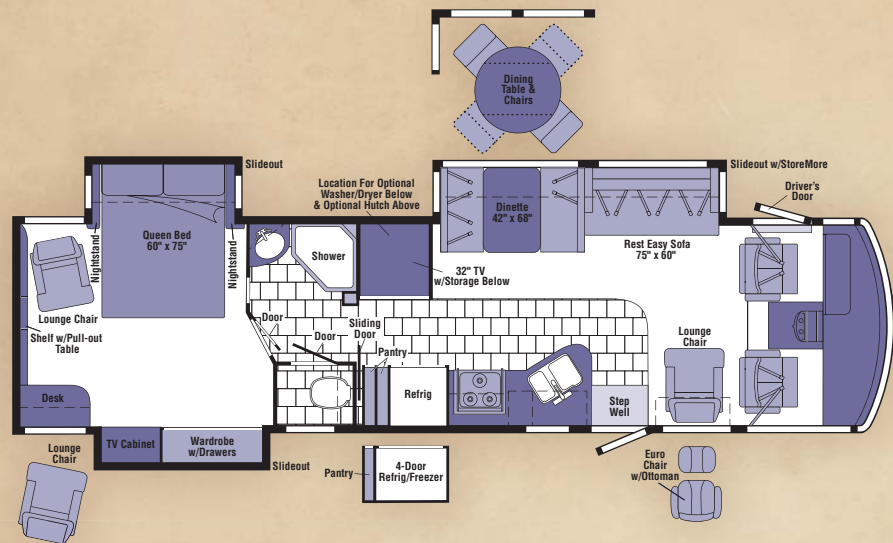
33V



35A



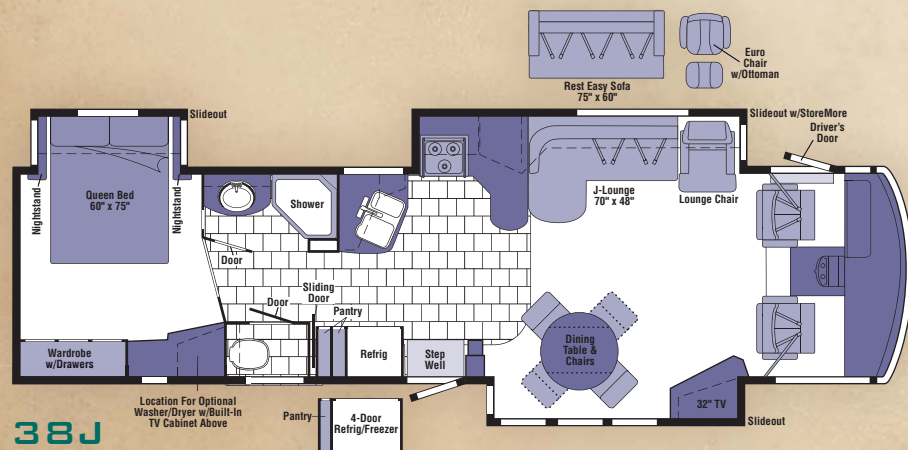
35L



37B



38T



38J

08 SUNCRUISER SPECIFICATIONS

WEIGHTS & MEASURES	33V	35A	35L	37B	38J	38T
Length	33'8"	35'11"	36'	37'11"	38'10"	38'11"
Exterior Height ¹	12'3"	12'3"	12'3"	12'3"	12'3"	12'3"
Exterior Width ²	8'5.5"	8'5.5"	8'5.5"	8'5.5"	8'5.5"	8'5.5"
Exterior Storage ³ (cu. ft.)	68.8	96.0	87.9	107.4	97.4	119.4
Awning Length	18'	20'	15'	19'	19'	13'
Interior Height	7'2.5"	7'2.5"	7'2.5"	7'2.5"	7'2.5"	7'2.5"
Interior Width	8'0.5"	8'0.5"	8'0.5"	8'0.5"	8'0.5"	8'0.5"
Freshwater Capacity w/Heater ⁴ (gal.)	86	88	90	88	88	88
Holding Tank Capacity - Black/Gray ⁴ (gal.)	55 / 43	50 / 75	65 / 49	50 / 58	51 / 53	53 / 70
LP Capacity ⁵ (gal.)	28	28	28	28	28	28
Fuel Capacity (gal.)	75	75	75	75	75	75
GCWR ⁶ (lbs.)	26,000A/26,000B	26,000A/26,000B/30,000C	26,000A/26,000B/30,000C	30,000C	30,000C	30,000C
GVWR (lbs.)	22,000A/22,000B	22,000A/22,000B/24,000C	22,000A/22,000B/24,000C	24,000C	24,000C	24,000C
GAWR - Front (lbs.)	7,500A/8,500B	7,500A/8,500B/9,000C	7,500A/8,500B/9,000C	9,000C	9,000C	9,000C
GAWR - Rear (lbs.)	14,500A/15,000B	14,500A/15,000B/15,500C	14,500A/15,000B/15,500C	15,500C	15,500C	15,500C
Wheelbase	208"	228"	228"	248"	248"	266"

AUTOMOTIVE/CHASSIS	33V	35A	35L	37B	38J	38T
A Ford® Chassis – 6.8L Super-Duty V10 SOHC Triton® engine, 362-hp, TorqShift™ 5-speed overdrive transmission, 130-amp. alternator, 4-wheel ABS, Tires 22.5", Wheels stylized aluminum	S	S	S			
B Workhorse™ Chassis – 8.1L Vortec V8, 340-hp, Allison® 1000 Series, 6-speed electronic overdrive transmission, 145-amp. alternator, 4-wheel ABS, Tires 22.5", Wheels stylized aluminum	0	0	0			
C Workhorse Chassis – 8.1L Vortec V8, 340-hp, Allison 2100 Series, 6-speed electronic overdrive transmission, 145-amp. alternator, 4-wheel ABS, Tires 22.5", Wheels stylized aluminum	0	0	0	S	S	S
Leveling Jacks HWH® hydraulic w/3-position controls, Trailer Hitch ® 5,000-lb. drawbar/500 lbs. maximum vertical tongue weight & 7-pin wiring connector	S	S	S	S	S	S

CAB AREA & DRIVER CONVENIENCES	33V	35A	35L	37B	38J	38T
Cab Seats (UltraLeather™) multiposition armrests, headrest, manually adjustable lumbar support, multi-adjustable recline, Cab Seat Pedestal swivel/slide, manual (passenger), 6-way power assist (driver), Cab Sound Control Package , Cigarette Lighter/12-Volt DC Powerpoint , Convenience Tray , Cruise Control , Door driver , KeyOne™ System (common key w/entrance door & exterior storage compartments), trim panel w/beverage holder, storage pocket, power mirror controls, Courtesy Light , Curtain front wraparound, Defroster Fans (2) auxiliary 2-speed w/instrument panel switch, Map Lights , Monitor System b/w rearview w/single camera & 1-way audio, Shades driver/passenger, Sunvisors (2) powered, switch, Trim Panel passenger side w/beverage holder, storage, switch appliqué, 12-volt DC powerpoint, Steering Wheel tilt w/power-assist, Window power (driver), full-slider w/screen, dual-glazed/thermo-insulated (passenger), Windshield Wipers intermittent, Workstation in-dash	S	S	S	S	S	S
Video Camera System 2 side-mounted cameras	0	0	0	0	0	0

ENTERTAINMENT	33V	35A	35L	37B	38J	38T
C.B. Prep 12-volt DC powerpoint, DVD Cable Ready bedroom, Entertainment Center w/CD Player (Exterior) DC receptacle, AC duplex receptacle, AM/FM radio, radio antenna, speakers (2), lockable compartment, removable table (NA 38T), Home Theater Sound System amplifier, DVD player, receiver, speakers (5), RV Radio® (Cab) AM/FM stereo/CD player w/weather band, iPod/MP3 input, remotes, roof-mounted flexible rubber antenna, Radio Power Switch main/auxiliary battery, Satellite System Ready , Telephone input & interior jacks, TV Enhancement Package antenna (amplified), interior jacks, exterior jack, coax wiring, cable input, Video Selection System	S	S	S	S	S	S

ENTERTAINMENT	33V	35A	35L	37B	38J	38T
Compact Multidisc Changer, Satellite Radio Sirius® (includes 6-month subscription, iPod interface connector), Satellite Dish Antenna RV digital, elevation sensing unit, manual or power, Satellite Dish Antenna RV digital, in-motion, King-Dome®, Stereo System (Rear) AM/FM, CD/DVD player, alarm clock, front TV jack (plays MP3)	0	0	0	0	0	0
TV 20" flat-face, color, AC w/remote, bedroom	S	S	S		S	S
TV 24" flat-face, color, AC w/remote, bedroom				S		
TV 27" LCD, stereo, color, AC w/remote, front overhead	S	S	S			
TV 32" LCD, stereo, color, AC w/remote, entertainment center				S	S	S

INTERIOR	33V	35A	35L	37B	38J	38T
Ceiling vinyl, Countertops Corian® solid-surface, galley & bath, Lights ceiling, incandescent, bath, bedroom w/wall switches, Light decorative oval, Lights fluorescent, recessed, galley & lounge w/wall switches, Lights reading, Mini Blinds galley & bath, Shades day/night pleated, lounge, dinette & bedroom, Windows flush-mounted/dual-glazed/thermo-insulated	S	S	S	S	S	S
Fireplace electric						0

FURNITURE	33V	35A	35L	37B	38J	38T
Dining Table & Chairs freestanding (2), folding (2)	0	0	0	0	S	0
BenchMark® Full Comfort Dinette access to storage below	S	S	S	S		0
Lounge Chair (UltraLeather) hoop-base, Lounge Chair (UltraLeather) Euro recliner w/ottoman, Rest Easy® Multi-Position Lounge (Fabric or UltraLeather) dual-control, Rest Easy Multi-Position Lounge (UltraLeather)	0	0	0	0	0	0

FURNITURE	33V	35A	35L	37B	38J	38T
Lounge Chair (Fabric) hoop-base, recliner, rocker, footrest	S	S	S	S	S	S
Rest Easy Multi-Position Lounge (Fabric) throw pillows	S	S	S	S	0	
Rest Easy Multi-Position Lounge (Fabric) power recliner, dual-trundle, throw pillows						0
Sofa (Fabric) J-lounge, power recliner, drawer below					S	
Sofa (UltraLeather) J-lounge, power recliner, drawer below					0	
Sofa/Dinette (Fabric) access to storage below, folding chairs (2), single footrest on sofa						S
Sofa/Dinette (UltraLeather)						0

GALLEY	33V	35A	35L	37B	38J	38T
Cutting Board slideout, Faucet single-control w/pullout sprayer, Lights indirect, Microwave/Convection Oven w/vented range fan, touch control, stainless steel, Sharp® Pantry(ies) , Range Top 3-burner w/storage below, sealed burners w/1 high-output, backsplash, Amana® Range Covers , Refrigerator/Freezer large double-door, Titanium Touch™ stainless finish, Norcold® Wastepaper Basket , Water Purification System w/ separate faucet	S	S	S	S	S	S
Appliance Storage Cabinets , Decorative Storage Cabinet		S				
Range 3-burner w/large oven, recessed, sealed burners, 1 w/high-output, Amana, Refrigerator/Freezer large double-door w/icemaker or 4-door w/icemaker, Titanium Touch stainless finish, Norcold	0	0	0	0	0	0

BATH	33V	35A	35L	37B	38J	38T
Cabinet lavatory, Cabinet medicine, Faucet (Lavatory) single-control, Faucet (Shower) single-control, flexible showerhead w/Moen Posi-Temp®, Light shower, Lights makeup, Shower Door textured glass	S	S	S	S	S	S
Fold-down Shower Seat	0	0	0	0	0	0

BEDROOM	33V	35A	35L	37B	38J	38T
Bed queen, innerspring mattress w/underbed storage, Bedspring , Lights decorative wall lamps, Pillows , Throw Pillow	S	S	S	S	S	S
Bed king, innerspring mattress			0			
Bed king, Sleep Number® by Select Comfort™ remote holders			0			
Bed queen, Sleep Number by Select Comfort, remote holders	0	0	0	0	0	0
Lounge Chair (1) (Fabric) w/storage ottoman, Flexsteel®				S		
Lounge Chair (2) (Fabric) w/storage ottoman, Flexsteel			0			

EXTERIOR	33V	35A	35L	37B	38J	38T
Awning patio, Awning Rails rain gutters, Entrance Door w/separate screen door, deadbolt lock, Door fuel-fill, Entrance Door Steps triple-electric w/doorjamb switch, Ladder , Light porch, Light service, driver's side, Mirrors electric, remote w/defrost, Mudflaps front & rear, Receptacle AC duplex, Sidewall Skin 1-piece smooth fiberglass, high-gloss, Storage Compartments smooth valance panels, trunk liner, gas struts, TriMark® KeyOne™ System, paddle latch, lights, interior master light shut-off switch	S	S	S	S	S	S
Awning patio, electric w/wind sensor & remote, Front Protective Mask w/full-body paint	0	0	0	0	0	0

SYSTEMS	33V	35A	35L	37B	38J	38T
HEATING & A/C – Automotive Heater/Air Conditioner , Home Comfort Plus Package central air heat pump, auxiliary automotive heater, powered ventilator fans (bath & galley), TrueAir® Central Air Conditioning System	S	S	S	S	S	S
Furnace 35,000 BTU	S					
Furnace 40,000 BTU		S	S	S	S	S
ELECTRICAL – Auxiliary Start Circuit , Batteries (2) (Coach) Group 24 deep-cycle w/disconnect system, Converter/Charger 55-amp., electronic, Dual Battery charge control (automatic), Electrical Distribution System AC & DC breaker panels, Generator 5,500-watt, Cummins Onan® Marquis Gold™ gas, Generator/Shoreline Automatic Changeover Switch , OnePlace® Systems Center wall-mounted, battery digital voltmeter, energy management display, generator hourmeter gauge, generator start/stop switch, holding tank levels, LP tank level, solar panel/battery charger light, water heater switch & lights, water pump switch & light, water tank level, courtesy ceiling light, Power Cord 50-amp., flexible cord, Powerpoint 12-volt DC receptacle(s), PowerLine® Energy Management System , Service Center (Electrical) cable input, power cord, QuickPort® service connection hatch, telephone input, portable satellite dish hookup, Solar Panel 10-watt battery charger	S	S	S	S	S	S
Inverter DC/AC, 600-watt	0	0	0	0	0	0
PLUMBING – Drain 1" water tank , Service Center (Drainage/Water) city water hookup/tank diverter fill, drainage valves, (3" graywater valve), exterior wash station w/pump switch, 10' sewer hose, QuickConnect® coupling valve, QuickPort service connection hatch, Tank flushing system, black tank only, Tank holding, heated compartment, Tank LP, permanent mount w/gauge, TrueLevel™ Holding Tank Monitoring System , Water Heater 10-gallon electronic ignition, 120 VAC/LP gas w/ motoraid, Water System Filtration Package housing, filter, wrench, Water System Winterization Package water heater bypass valve & siphon tube, Water Pump demand, permanent magnet motor w/diaphragm, Water Tank Fill pressurized city hookup w/diverter valve	S	S	S	S	S	S
Washer/Dryer Combination (NA on 35L w/king bed)	0	0	0	0	0	0

SAFETY	33V	35A	35L	37B	38J	38T
Assist Bar interior, Assist Handle exterior, acrylic, Bumpers front & rear, Detectors/Alarms LP leak, smoke, carbon monoxide, Fire Extinguisher 10 BC, Ground Fault Interrupter , Lights high-mount brakelamps, Light courtesy w/wall switch, Lights daytime running lamps, fog, Seat Belts cab, 3-point, adjustable, Window escape, Windshield one-piece, laminated safety glass	S	S	S	S	S	S
Child Seat Tether Anchor w/BenchMark dinette	S	S	S	S		S
WARRANTY ⁷	33V	35A	35L	37B	38J	38T
12-month/15,000-mile basic warranty,⁸ 36-month/36,000-mile limited warranty on structure,⁹ 10-year limited parts & labor warranty on roof skin⁸	S	S	S	S	S	S

- The height of each model is measured to the top of the tallest standard feature and is based on the curb weight of a typically equipped unit. The actual height of your vehicle may vary by several inches depending on chassis or equipment variations. Please contact your dealer for further information.
- Suncruiser floorplans feature a wide-body design - over 96" In making your purchase decision, you should be aware that some states restrict access on some or all state roads to 96" in body width. Before making your purchase decision, you should confirm the road usage laws in the states of interest to you.
- The load capacity of your motor home is designated by weight, not by volume, so you cannot necessarily use all available space when loading your motor home.
- Capacities are based on measurements prior to tank installation. Slight capacity variations can result due to installation applications.
- Capacities shown are tank manufacturer's listed water capacity (W.C.). Actual filled LP capacity is 80% of listing due to overfilling prevention device on tank.
- Actual towing capacity is dependent on your particular loading and towing circumstances which includes the GVWR, GAWR, and GCWR as well as adequate trailer brakes. Please refer to the Operator's Manual of your vehicle for further towing information.
- See separate chassis warranty.
- See your dealer for complete warranty information.

NA Not Available

S Standard

0 Optional

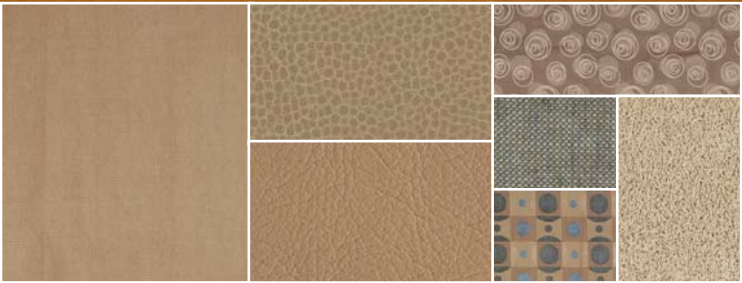
Not all items available in combination. See dealer for details.

Winnebago Industries® continuing program of product improvement makes specifications, equipment, model availability, and prices subject to change without notice. Comparisons to other motor homes are based on the most recent information available at printing.

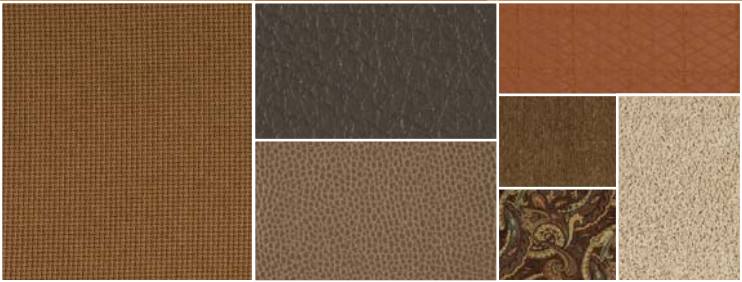
INTERIOR DECOR

Choose from three fabric selections and three mission style cabinetry wood choices.

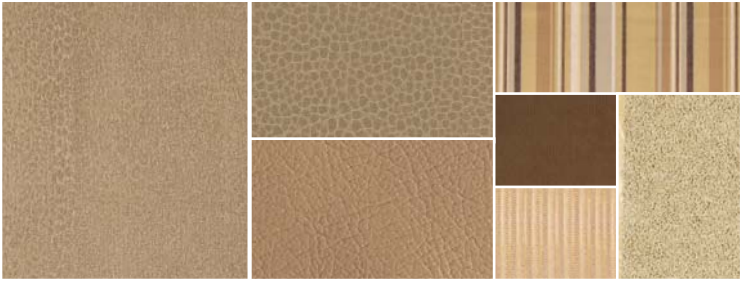
MAIN	ULTRA-LEATHER	BEDSPREAD	
		ACCENT	CARPET
		ACCENT	



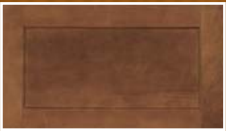
Harbor Lights w/available Briarwood/Timber UltraLeather™



Paisley Court w/available Truffle/Fields UltraLeather



Brighton Bay w/available Briarwood/Timber UltraLeather



Concert Cherry



Washed Maple



Sierra Maple

EXTERIOR STANDARD GRAPHICS



Dark Titanium Metallic



Sandstone Beige Metallic

FULL-BODY PAINT



Sand



Platinum



Dark Mahogany

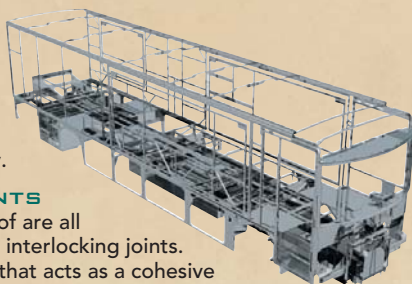


**BUILT BY WINNEBAGO INDUSTRIES.
BUILT TO LAST.**

Itasca motor homes are built by Winnebago Industries, the company that defined motor homes. The company that built its reputation on quality construction. The company that transformed the motor home concept into a way of life.

Today, Winnebago Industries brings that reputation for quality and its 49-year history of motor home innovation to the design and construction of every motor home. It's all a part of SuperStructure®, our exclusive system of proprietary structural components that instills each motor home with improved strength and durability.

SOLID FOUNDATION Steel and aluminum truss work provides a solid, flat foundation for the floor and sidewalls. Winnebago Industries engineers also take special care to distribute the weight of components to ensure proper handling and stability.



INTERLOCKING JOINTS

The floor, sidewalls and roof are all integrally connected using interlocking joints. This creates a coach body that acts as a cohesive unit for improved strength and durability.

E-COATING Winnebago Industries employs an exclusive 12-stage automotive-style dip tank process to apply an advanced electrodeposition coating on critical steel components for superior corrosion protection.



WEB

THERMO-PANEL® SIDEWALLS Invented by Winnebago Industries, Thermo-Panel construction combines a fiberglass panel, high-density, block-foam insulation and aluminum support structures to create some of the most durable, lightweight sidewalls in the industry.

ATTENTION TO DETAIL Whether it's sending every coach through a high-pressure water tunnel to check for leaks or labeling each individual wire and bar-coding parts to save time and frustration during service, Winnebago Industries considers every detail to ensure your Itasca motor home provides you with years of pleasure.

STRONG AS STEEL Appliances are secured directly to embedded steel plates for added safety. Windshields are also mounted in steel with an automotive-style sealant; lesser designs use a rubber gasket to mount the windshield in fiberglass.



1-year-old Itasca fiberglass roof



1-year-old competitor's rubber roof

FIBERGLASS ROOF The Suncruiser features a crowned, one-piece fiberglass roof, backed with a 10-year limited parts-and-labor roof skin warranty. Fiberglass offers superior strength, attractiveness and durability over the rubber roofs found on many competitive models which can chalk, streak and degrade over time. Fiberglass also provides increased puncture and tear resistance.



TAKE A TOUR We're proud of our process, state-of-the-art facilities and the people who make Winnebago Industries number one. We invite you to visit our factory in Forest City, Iowa, for a first-hand look at the dedication and technology behind every motor home we build.



RECOGNIZED QUALITY The Recreation Vehicle Dealer Association annually rates RV manufacturers and awards the Quality Circle award to manufacturers who provide exceptional products, service and support. Winnebago Industries is proud to be the only manufacturer to receive this award every year since its inception.



COMMITTED TO SERVICE We back our motor homes with the industry's best service after the sale.

- 12-month/15,000-mile basic limited warranty
- 36-month/36,000-mile warranty on structure
- Standard 10-year limited parts-and-labor roof skin warranty
- Complimentary 24-hour roadside assistance program
 - RV Technical Assistance Hotline
 - RV Service Appointment Assistance
 - Emergency Trip Interruption
 - Emergency Message Service
 - Nationwide Trip Routing
 - Fee-Free Travelers Cheques
- TripSaver Fast Track Parts. TripSaver guarantees that in-stock warranty parts ship directly to your dealer within 24 hours.
- National dealer service network



WIT CLUB Itasca owners are like family. Joining the Winnebago-Itasca Travelers is a great way to meet and travel with other Itasca enthusiasts.

Members enjoy:

- Caravans and rallies
- Local and state group activities
- RV travel benefits



WINNEBAGOIND.COM

Visit us on the web for more info on all of our motor homes, the latest product updates and a host of web-exclusive content.

For Sales and Service Information Contact:



Built proudly by



NYSE listing: WGO

©2007 Winnebago Industries, Inc.

Printed in USA

Seat belts are your most important hookup. Always buckle up.