



High Profile Fifth Wheels



• Distinctive Style • First Class Elegance • Unsurpassed Value

Where Style



Step into *Grand Junction* and experience the ultimate in sophistication and luxury, featuring solid hardwood cabinet doors and frames, solid surface countertops and residential furnishings. *Grand Junction* is the new standard in style, features and function.



and Great Living Merge Beautifully



35TMS in Barcelona Rust with Canyon Cherry wood

Luxurious slide rooms are a staple of the *Grand Junction* product line. The stained hardwood slide room fascia is trimmed with dental and crown molding. The oversized windows are adorned with day/night shades and designer coordinated valances. *Grand Junction* features residential style furnishings with a free standing dinette and four stylish chairs. Little touches like the designer lighting and overhead cabinets with glass inserts add to the beauty of the *Grand Junction* interior.

# Residential Features with Premium Components



## *the* Grand Junction Advantage

All *Grand Junction* models feature solid hardwood doors and cabinet stiles (frames)\*.

\*See Competitive Advantages for details.



*Grand Junction* is available in two wood stains oak & cherry.



Mesa Oak



Canyon Cherry  
(Optional)

Residential steel ball bearing drawer glide hardware



nts



34QRE in Fresco Chocolate and Mesa Oak interior, shown with optional TV, fireplace, ottoman and "Ultra-leather" recliners.



# Elegant Kitchen & Dining Areas



35TMS Kitchen  
Shown with optional Canyon Cherry stained cabinetry and optional granite countertops

*Grand Junction's* galley includes many premium features as standard equipment. Florescent lighting in the galley, an 8 cubic foot double door refrigerator with raised panel door inserts, a sliding kitchen pantry with travel lock, solid surface countertops, a residential faucet with pull-out sprayer, a convection microwave and a 22" oven with sealed burner range make *Grand Junction* your best value.

## *the Grand Junction Advantage*

Top Right - Solid surface countertops are a standard feature, shown with standard Mesa Oak stained cabinetry.

Bottom Right - Upgrade to granite countertops for added elegance, shown with Canyon Cherry stained cabinetry.

Far Right - Store your food in the standard extra large sliding pantry with wire shelving and a travel lock.



# Luxurious Bedroom Suites



35TMS Bedroom

*Grand Junction's* magnificent master bedroom suite was meticulously designed for comfort and versatility. The bedroom features a designer ensemble including a standard pillow-top mattress and a quilted bedspread with matching pillow shams and curtains. Reading lights above the raised panel, hardwood headboard and the solid wood slide fascia add to the splendor of the bedroom set. The storage below the lift-up bed is perfect for blankets, sheets and spare pillows while the large front wall closet and shirt ward hold plenty of clothing.



## *the Grand Junction Advantage*

*Grand Junction's* master bedroom storage ensemble includes a mirrored closet, washer/ dryer prep cabinet (with closet rod) and plentiful drawer space. The bed base is fully accessible for the largest storage capacity in its class.



35TMS Bedroom  
Shown with optional bedroom fireplace and LCD TV

# Spacious Bathrooms



*Grand Junction's* bathroom is designed for ease and versatility. The bathroom features a 36" wide, one-piece fiberglass, neo-angle shower with an integrated seat. A glass shower door and a brushed nickel, hand-held showerhead with on-off toggle are also included. The standard skylight above the shower increases headroom and lets in natural light to brighten the room. The porcelain toilet with foot-flush lever is also standard in *Grand Junction*.

# Interior Innovations

## *the* *Grand Junction* *Advantage*

A free-standing dinette table with sliding top and flip-up storage, dual dinette seats with below-seat storage and two folding dinette chairs are standard.

The optional central vacuum system with brush attachments will help you keep your *Grand Junction* clean.

The optional LCD TV complements the standard 5-in-1 home theater system. An electric fireplace with 4K BTU heater is also optional.





# Exterior Innovations



Automotive styling rear cap



Standard rear electric stabilizer jacks

*Grand Junction* features an easily accessible utility center with tank valve controls, fresh water fill, black tank rinse nozzle, hot and cold water exterior wash station, cable/phone jack, satellite prep and utility light. Also included in every *Grand Junction* are rear electric stabilizing jacks that require a simple push of a button to provide stability and minimize rocking. No more hand-cranking like our competitors.

## All of these items fit in *Grand Junction's* underbody "MAXXGarage"



### *the* Grand Junction Advantage

A front cargo door provides easier access and storage maneuverability (not available on competitor's units).

### MAXXGarage

Storage has never been so plentiful! *Grand Junction's* MAXXGarage storage system provides up to an amazing 125 cubic feet of storage below the body (most models).

*Grand Junction's* drop-frame stacked rail chassis design creates one of the largest storage spaces available in fifth wheels.



# More Standard Features – More Value

## Frame/Chassis Construction

Cambered 10" Steel I-Beam Frame Rails  
 Drop-Frame, Stacked Rail Chassis  
 Extended Heavy Duty Hitch  
 'Wide Stance' Electric Front Jacks  
 Side Mounted Dual Battery Trays \*  
 Recessed Under-Chassis Spare Tire Carrier\*\*\*\* (NA 34QRE)  
 MAXXGarage Storage Design  
 XL Front Cargo Doors  
 Powder-Coated Frame  
 10" Steel Crossbeams  
 "Ladder Design" Construction  
 Steel Outriggers  
 7000 LB. Tandem Axles \*\*\*\*  
 Leaf-Spring Suspension  
 MOR/*ryde* RE Rubber Shear Spring Equalizer \*\*\*\*  
 Ultra-lube Hubs \*\*\*\*  
 8 Lug Hubs \*\*\*\*  
 Aluminum Alloy Rims \*\*\*\*  
 ST235 80R16 LRE E-Rated RV Tires \*\*\*\*  
 Electric 12.25" Drum Braking System  
 MOR/*ryde* Rubber Hitch Pin \*\*\*\*

## Slide Room

Electric 'Worm Gear' Slide System  
 Flush Floor Main Slide System  
 Above Floor Electric Bedroom Slide

## Body/Coach Construction

### Sidewalls

Gel-Coat High Gloss Exterior \*\*\*  
 Vacuum-Bonded Lamination Process  
 Aluminum-Framed, Welded Box Infrastructure  
 Polystyrene 'Block Foam' Insulation  
 Vinyl-Wrapped *Luan* Interior Wall Panel  
 80% Tinted, Radius-Corner, 'Safety Glass,' UV-Rated Windows  
 3M Automotive Film Graphics

### Front & Rear Walls

Front Cap: Gel-Coat Molded Fiberglass \*\*\*  
 Rear Cap: Gel-Coat Molded Fiberglass \*\*\*  
 Aluminum-Framed, Welded Box Infrastructure  
 Laminated Construction  
 1/4" *Luan* Wood Exterior Wall Panel  
 80% Tinted, Radius-Corner, 'Safety Glass,' UV-Rated Windows  
 Polystyrene 'Block Foam' Insulation  
 Vinyl-Wrapped *Luan* Interior Wall Panel

### Primary Floor

3" Vacuum-Bonded, One-Piece Floor  
 Aluminum-Framed, Welded Box Infrastructure  
 Polystyrene 'Block Foam' Insulation  
 1/4" *Luan* Panel  
 Vinyl Vapor Barrier  
 5/8" *Structurewood* One-Piece Decking  
 1/2" 6 lb. Rebond Carpet Pad \*\*  
 Premium Residential Carpet

### Bath/Bedroom Floor

3" Vacuum-Bonded, One-Piece Floor  
 Aluminum-Framed, Welded Box Infrastructure  
 Polystyrene "Block Foam" Insulation  
 1/4" *Luan* Panel  
 5/8" *Structurewood* One-Piece Decking  
 Premium Residential Carpet

### Sub-Floor/Underbelly

Laminated Construction  
*Poly-flex* 2000 Exterior Vapor Barrier  
 1/4" *Luan* Substrate  
 'Reflectex' Aluminum Bubble Wrap Insulation (R7)

### Roof/Ceiling

Aluminum Roof Truss with 5" Tapered Box  
 3/8" Roof Decking  
 R14 Roof Insulation  
 Radius Aluminum Roof to Wall Transition

EPDM Rubber Roof Membrane-12 Year Warranty  
 Optional: R21 Roof Insulation

## Storage Compartment

MAXXGarage Storage Area  
 Aluminum Luggage Door Frames  
 1" Thick Luggage Door with Lock  
 Lighted Baggage Areas  
 Ozite-Lined Compartment

## Windows, Doors and Awnings

80% Tinted, Radius-Corner, 'Safety Glass,' UV-Rated Windows  
 Transom Window Above Main Slide \*\*\*  
 Opaque, Vented Window In Water Closet (NA Side Bath Models)  
 Vented Windows (NA Transom Window)  
 Egress Window in Bedroom  
 Domed Tinted Skylight Above Shower  
 30" Radius-Corner Entry Door with Dead Bolt Lock  
 Screen Door  
 8500 Series *A&E* Awning \*  
 Raised Panel Interior Doors (NA Cherry Wood)  
 Pivoting, XL Entry-Assist Handle \*  
 Optional: *Duo-Pane* Windows  
 Optional: Slide-Out Awning Toppers  
 Optional: Electric Awning

## Exterior Features

'Draw Tight' Rear Electric Stabilizer Jack \*\*\*  
 Deluxe 'Quick Release' Front Jack Pull Pins \*  
 Wide Stance Electric Front Jacks  
 16" Spare Tire with Steel Rim \*\*\*\*  
 Spare Tire Carrier with Lift Kit \*\*\*\*  
 Underbelly (2 piece) - Heated & Enclosed  
 10" Deep, Steel, Triple-Entry Steps - Frame Welded \*  
 Lighted Entry Step  
 Enclosed/Vented Battery Compartment for Dual Battery Design  
 Molded ABS Fender Walls  
 Exterior Patio Light \*  
 Exterior Hitch Light  
 Exterior Utility Station \*\*\*  
 Gravity Water Fill  
 Exterior Hot & Cold Shower System \*\*  
 Black Tank Flush System \*  
 City Water Fill with Locking Protective Door  
 Utility Light \*  
 Cable Hook-up  
 Phone Hook-up  
 Satellite Prep \*  
 Rear Ladder \*\*\*  
 Attic Roof Vents (2) \*  
 Drip-Rail Gutter System  
 Extended Gutter Spout

## Interior Systems

### Electrical Systems & Lighting

Centralized Interior Electrical Command Center  
 50 Amp Electrical Service  
 Detachable Marine-Grade Power Cord \*\*  
 55 Amp Converter  
 Battery Disconnect  
 110v GFI Exterior Receptacle  
 12v Battery Converter/Charger with Overcharge Protection  
 Dual Battery Configuration  
 Residential Wall Switches  
 Dome Pendant Light Above Dinette  
 Dome Light Above Sofa  
 Recessed Halogen Puck Lighting \*\*\*  
 Decorative Wall Scones in Living Room and Bedroom  
 Fluorescent Lighting in Galley and Desk Areas\*  
 Dimmer Switches (2)  
 Optional: Generator Prep  
 Optional: *Onan Marquis Gold* 5.5 kw LP Generator

### Plumbing System

12 Gallon Gas and Electric Hot Water Heater \*\*\*  
 Quick Disconnect, Coiled, 25ft. Hose with Sprayer \*\*

*Shurflo* Water Pump  
 "PEX" Polyethylene Tubing  
 Metal Pressure Fittings  
 Sewer Hose Storage System  
 Hot and Cold Water, Low Point Drains  
 98 Gallon Fresh Water Tank  
 Gray Water Tank: See Individual Floorplan Specs for Details  
 Black Water Tank: See Individual Floorplan Specs for Details  
 Remote Water Heater Switch  
 Washer/Dryer Prep (Stackable Capability) \*\*\*

## Climate Control

40K BTU Furnace \*\*\*  
 Forced Air Ducted Heat  
 Forced Air Heat in Underbelly  
 15K BTU Air Conditioner with Quick-Cool Vent \*\*\*  
 Ceiling-Ducted AC Vents  
 42" Reversible Ceiling Fan with Halogen Light Kit\*  
 Mold-Resistant, Aluminum-Wrapped AC Plenum  
 Prewired and Prepped for 2nd AC \*  
 Optional: Dual (2) Low Profile AC with Heat Pumps  
 Optional: Low Profile 13.5K BTU Bedroom AC-Direct Feed  
 Optional: *Fantastic* Fan in Bedroom (NA with Dual AC)  
 Optional: *Fantastic* Fan in Galley/Main Living Area  
 Optional: Electric Fireplace with 4K BTU Heater  
 Optional: 12 V Tank Pads (NA with CSA)  
 Optional: R21 Roof Insulation

## Key Interior Features

Vinyl 'Soft Touch' Padded Ceiling \*\*\*  
 Pre-Drilled & Screwed Hardwood Cabinet Construction  
 Decorative, Stained Hardwood Slideout Fascia \*\*  
 6 Panel Doors with Brushed Nickel Designer Hardware (NA Cherry Wood) \*\*  
*Howard Miller* Designer Clock \*\*  
 Premium Residential, Nylon Berber Carpet\*\*  
 1/2" 6 lb. Rebond Carpet Pad \*\*  
 Overhead Cabinets with Mini-Struts & Top Mount Hinges  
 Solid Wood Steps to Bedroom (NA Side Bath Models) \*\*  
 Washer/Dryer Prep (Stackable Capability) \*\*\*  
 Minimum Ceiling Height 6'7" in Bedroom

## Cabinetry & Countertops

'Kingstone' Solid Surface Acrylic Countertops \*\*  
 Solid Ash, Stained Cabinet Siles/Frames \*\*  
 Solid Ash, Raised Panel Cabinet Doors  
 Solid Ash Drawer Fronts  
 7-Ply Residential-Grade Plywood Drawer Construction  
 Stainless Steel Ball-Bearing Drawer Glides \*\*  
 Ball-Bearing Drawer Catch  
 Ball-Bearing Slide-Out Pantry with Baskets \*\*\*  
 Brushed Nickel Hardware  
 Austell Glass Inserts with Solid Ash Frames Above Sofa  
 Optional: Granite Countertops  
 Optional: Cherry Stained Hardwood Cabinetry

## Window Treatments

Day/Night Shades \*\*\*  
 Mini-Blinds (At Kitchen Sink Window)  
 Designer Hard Valance  
 Designer Hard Sided, Full Privacy Lambrequins

## Entertainment Systems

27" Flat Screen Stereo TV with Remote \*\*\*  
 5-in-1 Home Theater System with Remote \*\*\*  
 Satellite Prep \*  
 Cable Jack  
 TV Antenna with Power Booster  
 Bedroom TV Prep  
 Optional: LCD TV in Main Living  
 Optional: LCD TV in Bedroom

## Galley Area

*Armstrong* Linoleum with 'Tough Guard'  
 High-Profile Faucet with Retractable Sprayer \*  
 Sink Covers  
 XL Sliding Pantry with Wire Shelving and Lock \*\*\*  
 Cabinet Doors on Both Sides of Galley Cabinets (See Floorplan)

## Furniture & Appliances

Hide-A-Bed Sofa \*\*\*  
 End Table with Lamp (NA 32TCG & 34TRG) \*\*\*  
 Recliners (1-32TCG, 2-All Other Floorplans) \*\*\*  
 Free-Standing, Sliding-Top Dinette Table with Flip-Up Storage\*\*  
 Two Designer Dinette Chairs with Below-Seat Storage \*\*  
 Two Coordinating Folding Dinette Chairs \*\*  
 Premium King Size Pillow-Top Mattress (NA 31TKS) \*\*\*  
 Premium Queen Size Pillow-Top Mattress (31TKS) \*\*\*  
 8 cu.ft. Double Door Refrigerator  
 Solid Ash, Raised Panel Refrigerator Inserts \*  
 Large 1.3 cu.ft. Convection 'Over-the-Range' Microwave with Integrated Exhaust Fan \*\*\*  
*Amana* Sealed 3-Burner Stovetop \*\*\*  
 2 Piece Metal Range Cover  
 Deep, Residential-Style Double-Bowl Sink  
 High-Profile Faucet with Retractable Sprayer \*  
 All Coach Water Filtration System \*  
 Interior Utility Center  
 Optional: Two Person Dry Sauna  
 Optional: 10 cu.ft. Refrigerator  
 Optional: Second 8 cu.ft. Refrigerator (37QSL only)  
 Optional: Central Vacuum System  
 Optional: 'Ultra Leather' Recliners (1-32TCG, 2-All Other Floorplans)  
 Optional: Booth Dinette

## Bath Area

One-Piece Fiberglass Shower with Seat \*\*  
 Rain-Glass Shower Walls & Door  
 Brushed Nickel Shower Hardware and Wand with On-off Toggle  
 Large Medicine Cabinet with Vanity Lights & Mirror  
 Fiberglass Vanity Sink  
 Residential-Style Brushed Nickel Vanity Faucet  
 Residential-Style, Six-Panel Lavatory Doors with Lever Handle\*\*  
*Theford* Porcelain Bowl Toilet \*\*\*  
 Power Vent  
 Toilet Tissue Holder  
 Brushed Nickel Bathroom Accessories  
 Towel Hooks  
 Towel Bar

## Bedroom Area

Solid Hardwood, Stained Headboard \*\*  
 Night Stands  
 Dresser with Overhead Cabinet and TV Prep  
 Egress Window  
 Solid Wood Window Box with Mirrored Doors  
 Premium Bedspread Package & Window Coverings \*\*  
 Below Bed Storage  
 Front Wardrobe Ensemble  
 Sliding Mirrored Doors with Hanging Storage & Shelf  
 Drawer Bank with Clothes Hamper \*\*  
 Washer/Dryer Prep Behind Louvered Doors with Rod & Shelves\*\*

## Safety Features

Fire Extinguisher  
 Dead Bolt Locks on Entry Doors  
 120V GFI Protected Exterior Receptacles  
 LP Gas Detector  
 Smoke Detectors  
 Egress Windows  
 Safety Glass  
 10" Deep, Steel, Triple-Entry Steps - Welded to Frame\*  
 Lighted Entry Step  
 Patio Light \*  
 XL Folding Entry-Assist Handle \*  
 Interior, Solid Wood Exit Handle  
 Rear Radius Automotive Lamps  
 Front, Rear & Side Amber Road Lights

\* *Grand Junction* Consumer Convenience Package  
 \*\* *Grand Junction* Mile High Premiere Package  
 \*\*\* *Grand Junction* Easy Living Premium Package  
 \*\*\*\* *Grand Junction* Touring Performance Package  
 As of current production 2/07



# Premium Construction

## MOR/Ryde Suspension System



Grand Junction provides the MOR/ryde Equalizer Suspension System and Rubber Shear-Spring Pin Box as standard features. The systems work in unison to create the smoothest ride possible in a fifth wheel.

The MOR/ryde suspension system uses rubber shear springs that work in concert with the steel leaf springs. The rubber shear spring replaces the leaf spring equalizer. The MOR/ryde system will lower the spring rate providing

for almost double the axle travel of traditional systems. Increased axle travel translates into a smoother ride which protects your RV from jarring caused by rough roads.

The MOR/ryde Rubber Shear-Spring Pin Box incorporates a rubber shear spring that works both longitudinally and



laterally to diminish the back and forth 'chucking' motion that occurs between the tow vehicle and RV. This means a more comfortable ride for the driver and passengers. Plus, it reduces stress on the fifth wheel frame and helps prevent damage that can occur from rough towing.



MOR/ryde Equalizer

Competitor's Equalizer



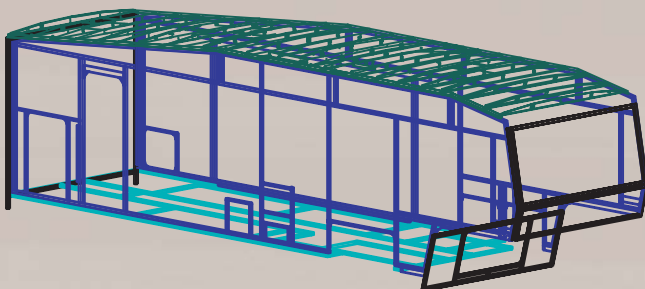
Competitor's Hitch

### The Competition

Most competitors still use a steel pivoting equalizer and standard pin box which **does not** provide the level of shock absorption and damage protection of the MOR/Ryde system.

**Protect your investment and enjoy the ride to your destination the with MOR/Ryde system.**

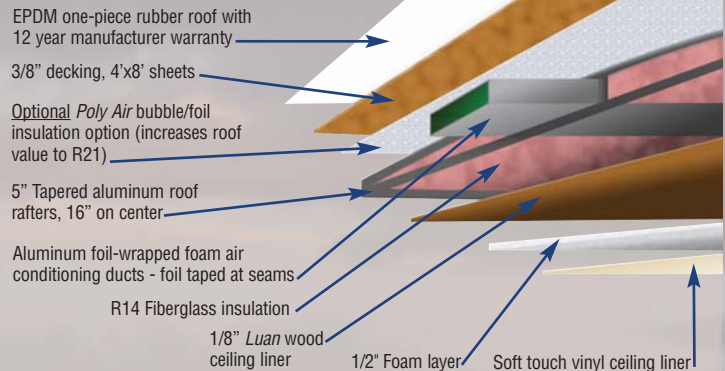
## 6-Way Welded Aluminum Cage Construction



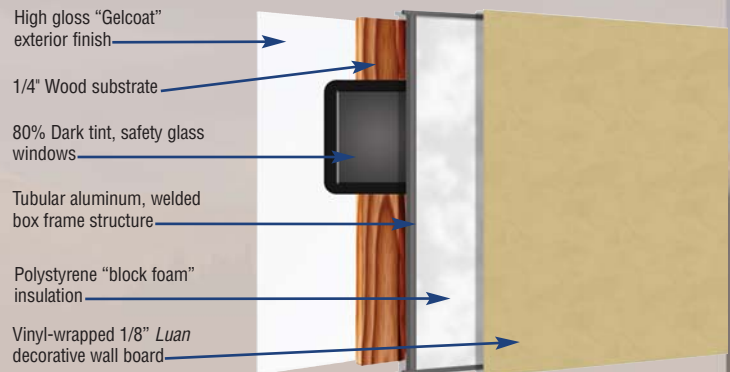
### Insulation "R" Values

Roof	R14	Floor	R17
Sidewalls	R9	Front/Rear Wall	R9
Optional Poly Air Insulation Increases Roof R Value to R21			

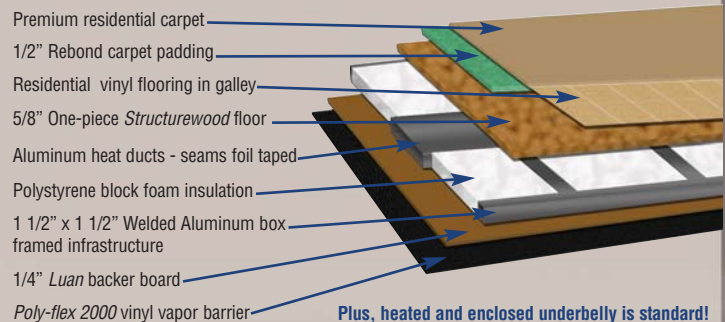
## R14, 5-Layer Roof Construction



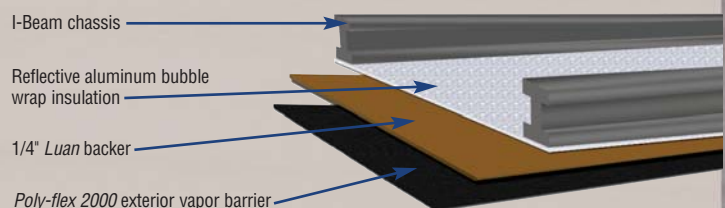
## Premium Vacuum-Bonded Laminated Wall Construction



## Laminated Floor Construction



## Heated/Enclosed & Insulated Underbelly





# Competitive Advantages

## Grand Junction's Stacked Rail Chassis Design



Grand Junction prides itself on having the best storage system possible in fifth wheels. That's why we use a stacked rail

chassis design. This chassis design uses double I-beam frame rails to increase the amount of storage space under the bath/bedroom deck. Many models feature an amazing 125 cubic feet of storage – almost 60% more than the competition!

Plus the design of the frame includes a wide stance front jack system. The jacks are placed almost 9" further apart than the competition which increases stability and prevents unwanted body movement when parked.

### The Competition

The competition still uses the traditional straight rail fifth wheel chassis that restricts storage space. Their jacks are mounted closer to the center of the chassis making it less stable.



*Grand Junction - superior storage and stability*

## Solid Hardwood Doors & Cabinets



### Grand Junction's Hardwood Stiles, Slot & Screw Construction

Grand Junction features solid ash cabinet stiles/frame, hardwood cabinet doors, drawers and slide room fascias. The wood is stained to match the solid hardwood cabinet stiles.

Many competitors use less expensive, vinyl wrapped MDF fiberboard or lumbercore stiles and slide room fascias. Additionally, many add veneer inserts to their doors and vinyl wrap their stiles to reduce cost.

Hardwood doors, stiles and fascias will retain their factory new appearance for years. The competitions less expensive construction may swell and delaminate over time.

*Grand Junction - which would you rather own, real or made to look real?*



### Competitors Lumbercore Stiles, Staple Construction

## Entry Steps



### Grand Junction's XL, 10" Deep Entry Steps



### Competitors 8" Deep Steps

Grand Junction's entry steps are a full 10" deep and include two anti-slip strips per step. Plus the corners are rounded for added safety.

Most competitors use only 8" deep, square corner steps.

Your safety is important to Grand Junction.

*Grand Junction - designed for safety*

## 6'7" Bedroom Height at Front Cabinet



More space in the bedroom includes more headroom too! Grand Junction's front wall and roof line allows for added headroom in the bedroom - a full 6' 7" tall at the front storage cabinet!

Most competitors' headroom decreases from the center of the bedroom to the front wall. Some are as low as 5'8" tall.

*Grand Junction - more storage, more height, more comfort*

## Soft Touch Ceiling Liner



Attention to detail makes all the difference when you are choosing your next recreational vehicle. On top of all of the other features that make Grand Junction special, we have even looked at ways to improve the ceiling liner.

Grand Junction includes a soft-touch ceiling liner. Usually only

found in high end motor homes, Grand Junction includes this feature as a standard item.

The soft-touch ceiling liner is stylish vinyl layer that is laminated to 1/2" foam and a 1/8" wood backer. The ceiling liner has a great look, plus it reduces sound levels and adds another layer of insulation to your fifth wheel.

The competition uses a white panel board with nailed batten strips at the seams – every 4'. Ceiling paneling may work loose over time and does not provide the look or insulation value Grand Junction's soft touch ceiling provides.

*Grand Junction - you can see, feel and hear the difference!*

## Steel Ball Bearing Drawer Glides



Grand Junction's stainless steel ball bearing drawer hardware is designed for years of rigorous use. The drawer glides are designed to open easily under a full load and include a drawer stop feature to prevent drawers from opening during travel. The hardware is mounted on the sides of the drawers and is screwed to solid wood drawer sides.

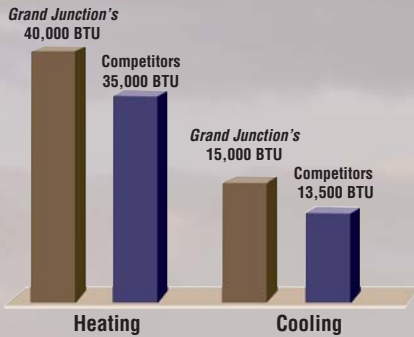
Many competitors use single plastic or combination plastic and metal drawer glides mounted on the bottom of the drawer. Check out the competitions drawer sides. – Are they real wood?

*Grand Junction - premium, quality features*



# Premium Appliances & Utilities

## Heating and Cooling Systems

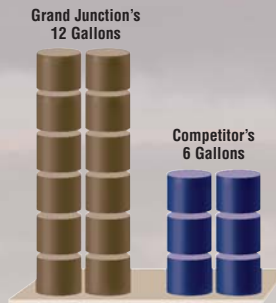


**Heating:** *Grand Junction* will keep you warm on those chilly evenings with a standard 40,000 BTU forced air furnace. Most competitors only offer a 35,000 BTU furnace.

**Cooling:** *Grand Junction* features a standard 15,000 BTU roof air conditioner with a quick cool feature. It's easy to use and cools your RV more efficiently than the competitions 13,500 BTU roof air.

*Grand Junction - warmer, cooler – better!*

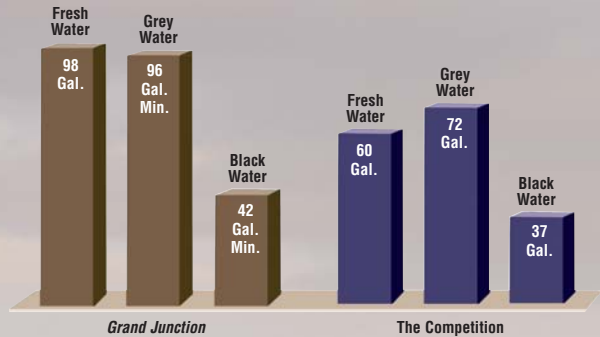
## 12 Gal. Water Heater



*Grand Junction's* standard 12 gallon, quick recovery water heater allows for longer showers.

Don't settle for the competition's smaller 6 or 10 gallon water heater.

## Large Fresh Water & Waste Water Tanks



Anyone who has owned RV's in the past knows that large tank sizes are critical. That's why *Grand Junction* uses a 98 gallon fresh water tank and dual 48 gallon grey water tanks – some models even feature a third 48 gallon grey water tank! Add *Grand Junction's* standard 12 gallon hot water heater to the equation and you will find that the *Grand Junction* has one of the largest water storage systems available in the market today. (See model information for specific tanks sizes)

*40% more Fresh Water capacity – 20% more Black Water capacity and 20% more Grey Water Capacity – The Grand Junction Advantage*

## Sealed Burner Oven & Half-Time Convection Microwave

*Grand Junction* is designed for enhanced livability by providing you with the industry's most advanced products as standard features.

Our 22" *Amana* oven is larger than most competitors' 19" oven, plus the three-burner cook top features a sealed burner with wire pan rack and range cover. It's large enough to cook the family meal and it's easy to clean.

*Grand Junction* also features a large 1.3 cu.ft. *Half-Time* convection microwave. The *Half-Time* microwave operates like a standard microwave or convection oven. Both features can be used together to greatly reduce cooking time. More importantly, the microwave is a residential-style 'over the range' appliance with an integrated exhaust fan that is vented to the outside.



## The Competition

Many competitors use a 19" oven with an open burner cook top. These conventional cook tops have openings that allow food and crumbs to fall between the top and the oven, making them difficult to clean. Plus, the competition uses a 1 cu.ft. microwave that is built into the overhead cabinets and requires a separate exhaust fan that robs your galley of usable space and lifts the appliance to a height that is uncomfortable and dangerous for most users.

*Premium appliances - enhanced livability*

## Solid Surface Residential Countertops

Nothing says class and elegance in a kitchen like solid surface countertops. *Grand Junction's* solid surface countertops are the ultimate in style and function. Each countertop is 1/2" thick and is handmade to fit your vehicle to assure many years of durable use and classic beauty. *Grand Junction* is also available with optional granite countertops.

Many of our competitors use laminate countertops that are glued to 1/4" particleboard backers or a fiberglass base with 1/16" of sprayed acrylic. Try running your fingers along the edge, be careful!

*Which type of countertop would you rather have?*



## Premium Residential Lighting



*Grand Junction* features premium residential lighting as a standard feature. From the brushed nickel, dual pendant dinette light to the standard reading lamps and fluorescent lighting in the galley, *Grand Junction* provides stylish lighting that you need after dark. Plus, *Grand Junction* features "puck style" recessed halogen lights. This new innovation spreads even amounts of natural daylight-style lighting throughout your coach. You will love the glow of these lights.

*Don't settle for the competition's old fashioned "pancake" lights!*

## Grand Junction Decors



Barcelona Rust



Fresco Chocolate



Midnight Sun



Vintage Moss

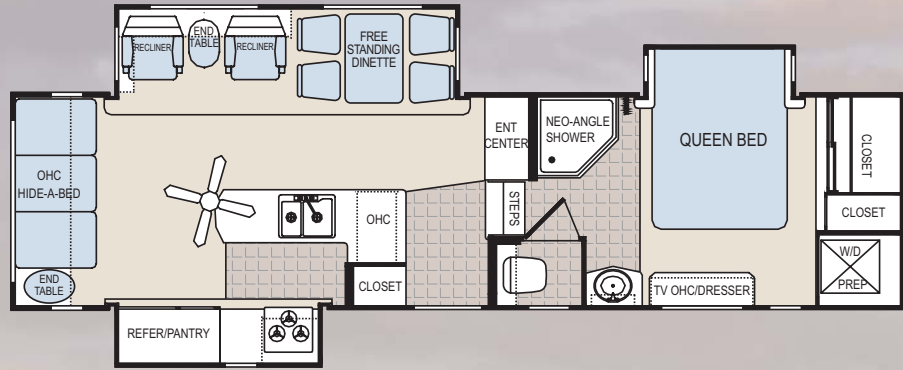
All decors are available with Mesa Oak or Canyon Cherry wood stain.



# Premium Floorplans and Specifications

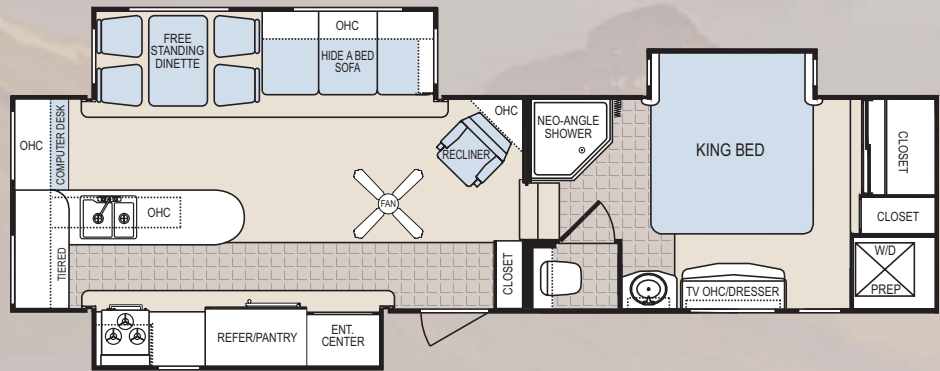
## 31TKS

Unloaded Vehicle Weight	11,425
Dry Hitch Weight	2,210
Gross Vehicle Weight	15,500
Net Cargo Capacity	4,075
Length	34 ft. 4 in.
Exterior Width	8 ft.
Exterior Height	12 ft. 4 in.*
Fresh Water Capacity	98
Grey Water Capacity	48/48
Black Water Capacity	42
Tire Size	ST235/80R16 (E)
Furnace Size (BTU's)	40,000



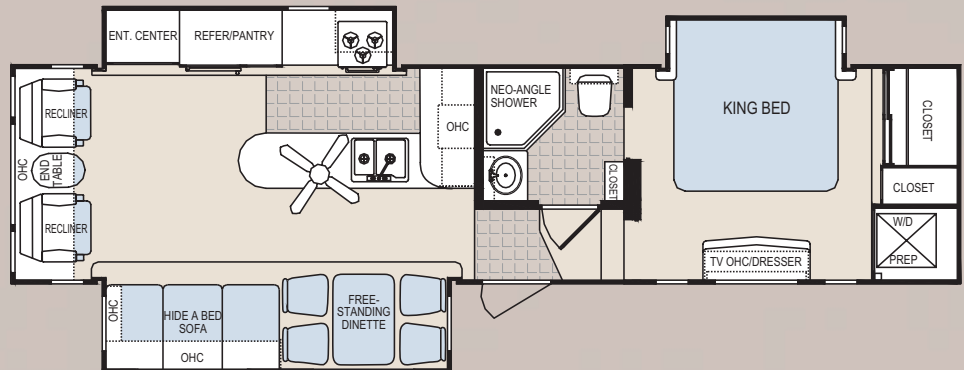
## 32TCG

Unloaded Vehicle Weight	11,195
Dry Hitch Weight	2,175
Gross Vehicle Weight	15,500
Net Cargo Capacity	3,535
Length	36 ft. 2 in.
Exterior Width	8 ft.
Exterior Height	12 ft. 9 in.*
Fresh Water Capacity	98
Grey Water Capacity	48/48
Black Water Capacity	42
Tire Size	ST235/80R16 (E)
Furnace Size (BTU's)	40,000



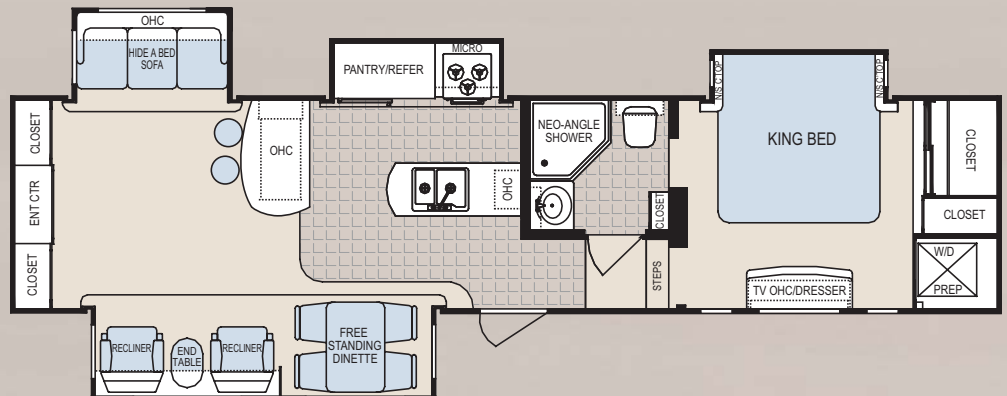
## 335TRL

Unloaded Vehicle Weight	11,899
Dry Hitch Weight	2,231
Gross Vehicle Weight	15,500
Net Cargo Capacity	3,601
Length	36 ft. 7 in.
Exterior Width	8 ft.
Exterior Height	12 ft. 9 in.*
Fresh Water Capacity	98
Grey Water Capacity	48/48
Black Water Capacity	48
Tire Size	ST235/85R16 (E)
Furnace Size (BTU's)	40,000



## 34QRE

Unloaded Vehicle Weight	12,246
Dry Hitch Weight	2,472
Gross Vehicle Weight	15,500
Net Cargo Capacity	2,782
Length	38 ft. 10 in.
Exterior Width	8 ft.
Exterior Height	12 ft. 7 in.*
Fresh Water Capacity	98
Grey Water Capacity	48/66
Black Water Capacity	48
Tire Size	ST235/85R16 (E)
Furnace Size (BTU's)	40,000

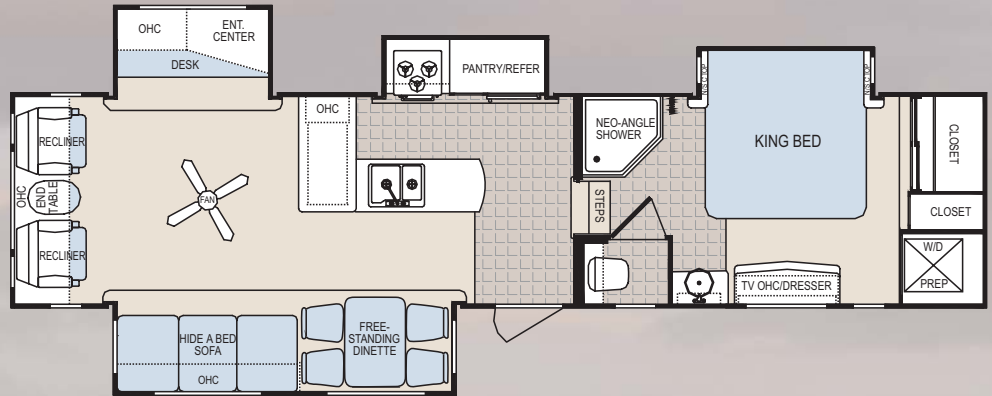




# Premium Floorplans and Specifications

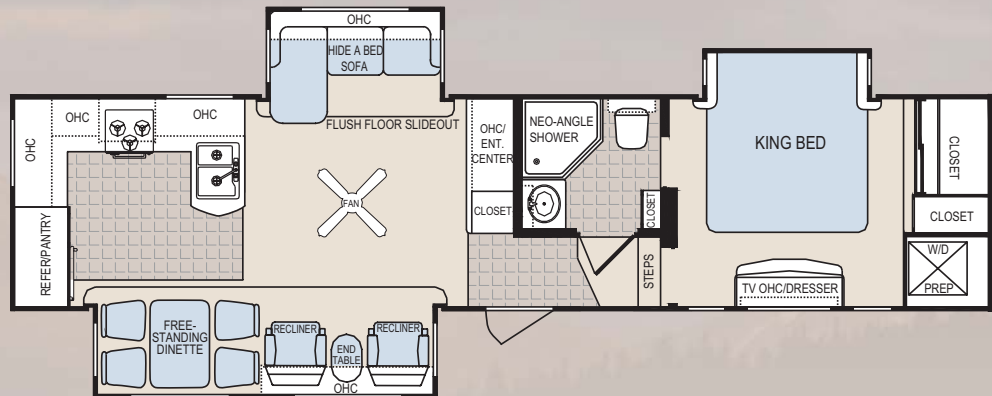
## 34QRL

Unloaded Vehicle Weight	12,826
Dry Hitch Weight	2,613
Gross Vehicle Weight	15,500
Net Cargo Capacity	2,674
Length	38 ft. 3 in.
Exterior Width	8 ft.
Exterior Height	12 ft. 8 in.*
Fresh Water Capacity	98
Grey Water Capacity	48/48
Black Water Capacity	42
Tire Size	ST235/80R16 (E)
Furnace Size (BTU's)	40,000



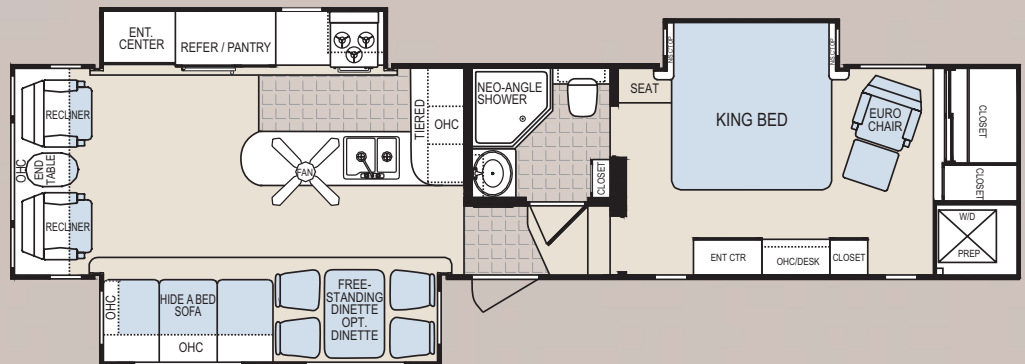
## 34TRG

Unloaded Vehicle Weight	12,318
Dry Hitch Weight	2,870
Gross Vehicle Weight	15,500
Net Cargo Capacity	3,182
Length	38 ft. 4 in.
Exterior Width	8 ft.
Exterior Height	12 ft. 8 in.*
Fresh Water Capacity	98
Grey Water Capacity	48/48/48
Black Water Capacity	48
Tire Size	ST235/80R16 (E)
Furnace Size (BTU's)	40,000



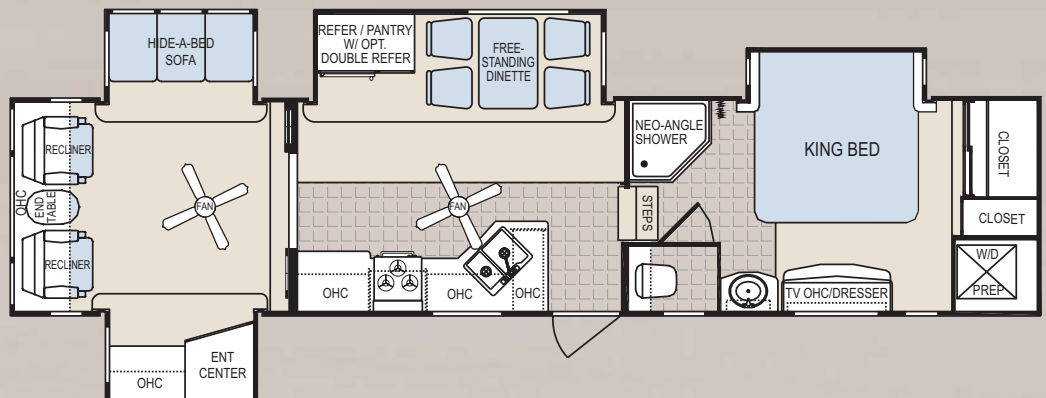
## 35TMS

Unloaded Vehicle Weight	12,840
Dry Hitch Weight	2,273
Gross Vehicle Weight	15,500
Net Cargo Capacity	2,660
Length	39 ft. 8 in.
Exterior Width	8 ft.
Exterior Height	12 ft. 8 in.*
Fresh Water Capacity	98
Grey Water Capacity	48/66
Black Water Capacity	42
Tire Size	ST235/80R16 (E)
Furnace Size (BTU's)	40,000



## 37QSL

Unloaded Vehicle Weight	13,060
Dry Hitch Weight	2,472
Gross Vehicle Weight	15,500
Net Cargo Capacity	2,440
Length	40 ft.
Exterior Width	8 ft.
Exterior Height	12 ft. 9 in.*
Fresh Water Capacity	98
Grey Water Capacity	48/48
Black Water Capacity	42
Tire Size	ST235/80R16 (E)
Furnace Size (BTU's)	40,000



\* Add 5" in total height for optional 2nd AC.



# Competitive Comparison Worksheet

Take a closer look at Grand Junction. It's loaded with standard features you won't find on competitive products.

## Premium Features

Premium Features	Grand Junction		Competitor A		Competitor B	
	Standard	Optional	Standard	Optional	Standard	Optional
• 6-Way Aluminum Superstructure (walls, roof, floor)	✓					
• 5-Way Vacuum Bonded (Laminated) Construction	✓					
• Drop Frame Chassis Design	✓					
• MOR/ryde "RE" Suspension	✓					
• MOR/ryde Rubber Pin Box	✓					
• Dual 7000 lb. Axles	✓					
• 8 Lug Aluminum Alloy Rims	✓					
• Gel-Coat Fiberglass Exterior	✓					
• "Quick Draw" Electric Rear Stabilizer Jacks	✓					
• Heated Insulated & Enclosed Underbelly	✓					
• R14 Roof Insulation	✓					
• Vented Windows with 80% Tint Safety Glass	✓					
• 10" XL Folding Entry Step	✓					
• Enclosed Utility Center	✓					
• Dual Side Mount Battery Compartment/Battery Disconnect	✓					
• Black Tank Flush System	✓					
• 1" Thick Locking Baggage Doors	✓					
• Solid Surface Countertops with Backsplash	✓					
• Premium "Soft Touch" Vinyl Ceiling	✓					
• Solid Ash Cabinet Stiles	✓					
• Solid Ash Cabinet Doors	✓					
• Solid Ash Slideout Fascia & Crown Molding	✓					
• Armstrong Linoleum with 'Tough Guard' Finish	✓					
• 40K BTU Furnace	✓					
• 15K BTU AC	✓					
• 12 Gallon Water Heater	✓					
• Halogen Interior Lighting Package	✓					
• Decorative, Residential Light Fixtures	✓					
• Hide-a-Bed Sofa	✓					
• Zero-Wall Recliner(s)	✓					
• Day/Night Shades	✓					
• Designer <i>Howard Miller</i> Clock	✓					
• Premium Residential Carpet with 6 lb. rebond carpet pad	✓					
• OTR Convection Microwave Oven with Turntable (vented to exterior)	✓					
• Sealed Burner Range with Large Oven	✓					
• Water Filtration System	✓					
• Free-Standing Table & Chairs	✓					
• Premium Pillowtop Mattress	✓					
• 6'7" of Headroom Throughout Bedroom	✓					
• Washer/Dryer Prep - Stackable Unit	✓					
• Porcelain Toilet	✓					
• 36" 1-pc. Fiberglass Shower with Seat	✓					

**No Other Fifth Wheel Can Match Grand Junction's Features & Value!**

2164 Caragana Court • Goshen, IN 46526 • Sales: 574-534-1224  
 Fax: 574-975-0601 • Parts, Service & Warranty: 574-537-0700

[www.GrandJunction-rv.com](http://www.GrandJunction-rv.com)

YOUR LOCAL DEALER

Limited Warranty • Two years structural and appliance • One year hitch to bumper • See owners manual for more information

**Vehicle loading** - Every effort has been made to provide the greatest number of options for the recreational vehicle owner. Along with these choices comes the responsibility to manage the loads that are imposed by the choices that they remain within the manufacturer's specified chassis weight limits. Do not overload the recreational vehicle. Some optional equipment not included. Net carrying capacity (NCC) is determined by subtracting unloaded vehicle weight (UVW) from gross vehicle weight (GVWR) and includes fluids, options and cargo. Liquid capacities and weights are approximations only. **Warning** - This information is intended as a guide only. Weights of individual vehicles may vary. Consult your owner's manual for complete loading, weighing and towing instructions. \*UVW and Hitch Dry Weight are base weights of units without options. Each unit includes a weight label which lists specific weight information for that unit.

Product information, specifications, and photography in this brochure were as accurate as possible at time of printing. Photographs may contain some features that are optional on your vehicle. Since we continually strive to improve our products, actual products may differ. Prices and specifications are subject to change without notice. All capacities are approximate and dimensions are nominal. Some features or options may be different or unavailable in Canada. Vehicles are designed for recreational use only and not intended for use as a primary residence. All product brand names used in this brochure are registered trademarks of Thor Industries Inc. Unauthorized use of trademarks is prohibited by law.

rev1.GJ5.07  
 ©2007 Thor Industries, Inc.