



GEORGETOWN **GT5**

BY FOREST RIVER

STEEL

BLACK

GVWR (Gross Vehicle Weight Rating) is the maximum permissible weight of the unit when fully loaded. It includes all weights, inclusive of all fluids, occupants, cargo, optional equipment and accessories. For safety and product performance do NOT exceed the GVWR.

GCWR (Gross Combined Weight Rating) is the maximum permissible loaded weight of your motor home and any towed trailer or towed vehicle. Actual GCWR of this vehicle may be limited by the sum of the GVWR and the installed hitch receiver maximum capacity rating; see hitch rating label for detail.

GAWR (Gross Axle Weight Rating) is the maximum permissible weight, including cargo, fluids, optional equipment and accessories that can be safely supported by each axle.

UVW (Unloaded Vehicle Weight)* is the typical weight of the unit as manufactured at the factory. It includes all weight at the unit's axle(s), including full fuel, all fluids and LP Gas. The UVW does not include cargo, fresh potable water, additional optional equipment or dealer installed accessories.

*Estimated Average based on standard build optional equipment.

CCC (Cargo Carrying Capacity)** is the amount of weight available for fresh potable water, cargo, passengers, additional optional equipment and accessories. CCC is equal to GVWR minus UVW. Available CCC should accommodate fresh potable water (8.3 lbs per gallon). Before filling the fresh water tank, empty the black and gray tanks to provide for more cargo capacity.

** Estimated average based on standard build optional equipment

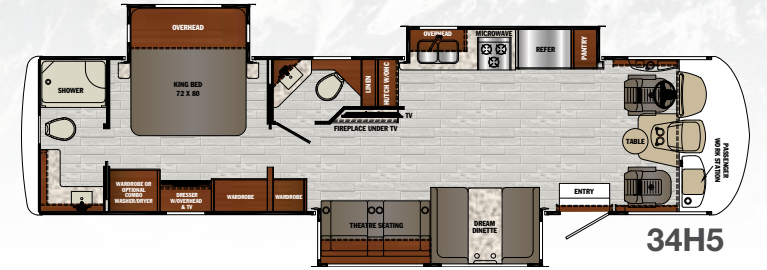
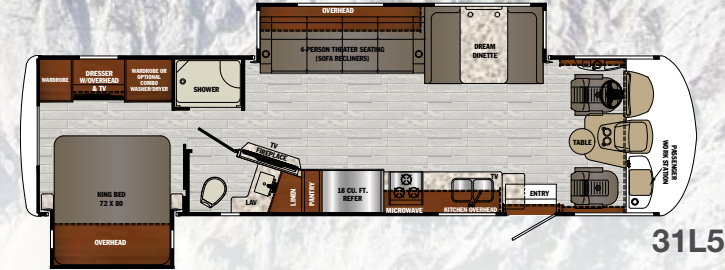
Each Forest River RV is weighed at the manufacturing facility prior to shipping. A label identifying the unloaded vehicle weight of the actual unit and the cargo carrying capacity is applied to every Forest River RV prior to leaving our facilities.

The load capacity of your unit is designated by weight, not by volume, so you cannot necessarily use all available space when loading your unit.

Actual towing capacity is dependent upon your particular loading and towing circumstances, which includes the GVWR, GAWR and GCWR as well as adequate trailer brakes. Please refer to the Operator's Manual of your vehicle for further towing information.

5 SERIES DIMENSIONS & CAPACITIES

	31L5	34H5	34M5	36B5
Chassis	Ford F53	Ford F53	Ford F53	Ford F53
Engine	V-10	V-10	V-10	V-10
Horsepower	320 HP	320 HP	320 HP	320 HP
Torque (ft.-lbs)	460	460	460	460
Wheelbase	228"	242"	242"	242"
Fuel Capacity (gal)	80	80	80	80
GVWR (lbs)	22,000	22,000	22,000	22,000
GCWR (lbs)	26,000	26,000	26,000	26,000
GAWR Front (lbs)	8,000	8,000	8,000	8,000
GAWR Rear (lbs)	15,000	15,000	15,000	15,000
Exterior Storage (cu ft)	187	191	219	176
LP Tank (gal)	24.5	24.5	24.5	24.5
Fresh Water (gal)	82	82	82	82
Water Heater (gal)	6	6	6	6+6=12
Grey Tank (gal)	52	52	52	42+42=84
Black Tank (gal)	52	52	52	42+42=84
Length	35' 5"	37' 11"	37' 11"	37' 11"
Exterior Width	99.5"	99.5"	99.5"	99.5"
Exterior Height	12' 5"	12' 5"	12' 5"	12' 5"
Interior Width	95.5"	95.5"	95.5"	95.5"
Interior Height	82"	82"	82"	82"
Awning Length	19'	17' & 12'	18'	12' 6"
Furnace (BTU)	35K	35K	35K	35K/20K
Safety Belts	6	6	6	6



5 SERIES FULL BODY PAINT OPTIONS



MERLOT

SOLSTICE

SEMINOLE

MIDNIGHT

STANDARDS

Fiberglass Front Cap w/Chrome Package
Lighted Logo, LED Accent Lights and
Automotive Bonded Front Windshield

CHROME PACKAGE

Chrome Headlight Bezels
Chrome Foglight Bezels
Chrome Mirrors & Logos
One Piece Fiberglass Roof
Slam Latch Side Hinge Baggage Doors
5.5kw Onan Generator
22.5" Tires w/Aluminum Wheels
2000w Inverter

Heated and Enclosed Holding Tanks
w/Arctic Package

5000 lbs. Tow Hitch w/7-Way Plug
Hydraulic 4-Point Leveling Jacks

Rear Roof Ladder

Grey Rotocast Storage Compartments w/Drains

Rubber Tread Entry Step

Rubberized Entry Assist Handle (exterior)

Stainless Steel Entry Assist Handle (interior)

Flush Floor Construction Throughout

Residential Vinyl Flooring

Adjustable 3 Point Seat Belts

Power Driver's Seat

Diamond Plate Rubber Floor Covering (driver area)

Power Front Sun Shade

Manual Cockpit Side Sun Shades

Roller Shades Throughout

LED Map, Bunk and Accent Lights

Manual Front Overhead Bunk

Low Profile Engine Cover w/Drink Holders

(2) High Output Quiet Air Command™

Ducted Roof A/C w/Chill Construction
and (2) Heat Pump (31L5 has 1 Heat Pump)

6 Gallon Gas/Electric Water Heater (x2 36B5)

KING Jack™ Digital TV Antenna

w/Mount & Built-in Signal Meter

Marine Bluetooth Exterior Speakers

10.1" Dash Entertainment System

Custom Cockpit Dash w/ABS Side Consoles,

Drink Holders, 110v Outlet/USB,

Passenger Side Workstation

Dream Dinette

Undermount Stainless Steel Kitchen Sink

Stainless Steel Faucet w/Pull Out Sprayer

18 cu. ft. Stainless Steel Gas/Electric

Norcold Refrigerator (34H5 is 12 cu. ft.)

Stainless Steel 3-Burner Cooktop

w/Oven and Flush Mount Glass Stove Cover

Convection Microwave

Raised Panel Solid Wood Cabinet Doors

w/Hidden Hinges

Solid Surface Countertop w/Flip Up Extension

Hide-A-Bed Sofa w/Footrests (36B5)

Power Theatre Seats (31L5, 34H5, 34M5)

40" LED Main TV

Bedroom TV w/Flip Up

Night Stands w/110v Outlets/USBs

King Bed (72" x 80")

One Piece Fiberglass Shower

Stainless Steel Bathroom Sink

Washer Dryer Combo Prep (stack on 34M5)

Outside Shower

Black Tank Flush

Triple Electric Entrance Step

Encased Power Patio Awning w/LED Light

Slideout Room Awning(s)

30" Wide Entrance Door

Color Side and Rear Camera Package

One-way Audio on Backup Camera

Dual Coach Batteries

Battery Disconnect

40" Exterior TV

Emergency Start Switch

Precision Circuits Multiplex System

Enclosed Quick Connect Exterior LP Fitting

POPULAR OPTIONS

P2K Power Front Overhead Bunk

Dual Pane Windows

Exterior Cargo Tray

Washer Dryer Combo

(Stackable Washer/Dryer for 34M5)

7.0kw Onan Generator

Full Body Paint

Power Theatre Seats (36B5)

(Standard on 31L5, 34H5, 34M5)

EXTERIOR OPTIONS

Steel Partial Paint Package

Black Partial Paint Package

FULL BODY PAINT OPTIONS

Merlot

Solstice

Seminole

Midnite

CABINETRY

Landis Ash

INTERIOR DÉCOR OPTIONS

Sand Castle

Granite

FREE MEMBERSHIP
to Forest River Owners' Group

www.forestriverfrog.com



PRECISION CIRCUITS INC



GEORGETOWN BY FOREST RIVER GT5

Forest River, Inc.
Georgetown Division
902 County Road 1
Elkhart, IN 46515
(574) 367.3285



CUSTOMER SATISFACTION



www.ForestRiverBuyLocal.com

24/7 EMERGENCY ROADSIDE ASSISTANCE WITH VEHICLE PURCHASE*

TOWING	WINCH-OUT
JUMP-STARTS	MOBILE MECHANIC
TIRE CHANGES	TECHNICAL
FLUID DELIVERY	SUPPORT
LOCKOUT	DEALER LOCATOR
SERVICE	SERVICES



*VALID FOR 1 YEAR FROM DATE OF PURCHASE



Learn More
Scan this barcode using
a QR Reader on your
smart phone to learn
more about Forest River.



A Berkshire Hathaway company.

All information contained in this brochure is believed to be accurate at the time of publication. However, during the model year, it may be necessary to make revisions and Forest River, Inc., reserves the right to make all such changes without notice, including prices, colors, materials, equipment and specifications as well as the addition of new models and the discontinuance of models shown in this brochure. Therefore, please consult with your Forest River, Inc., dealer and confirm the existence of any materials, design or specifications that are material to your purchase decision. 01/20

©2020 GT5

a Division of Forest River, Inc., a Berkshire Hathaway company. All Rights Reserved.