

# Minnie Winnie

**WINNEBAGO**



## *Why Minnie Winnie?*

- Six versatile floorplans offer flexible sleeping spaces
- Large rear trunk
- LED interior lights
- Optional heated holding tanks
- Optional package upgrades
- Primera® fabric on sofa and dinette
- Available front cap upgrade
- Stylish vinyl ceiling



On the Cover: 31K Polar Tuscan Gold Standard Graphics with Available Front Cap

31K Infinity with Glazed Driftwood Cabinetry

## Make it Your Own

There is no better way to jump into the RV lifestyle than in a Minnie Winnie®. Not only is it built to Winnebago's® legendary construction standards, it is available in six floorplans and multiple optional packages to let you find the right coach for you and your family. Standard features include LED lighting, USB charging ports, and a large rear

trunk. Then, make it your own with options such as a satellite radio and a bedroom HDTV. Whether you want a nimble 24-footer or a 33-foot motorhome with multiple sleeping spaces, including a walk-around queen bed, you'll find what you're looking for and more in the Minnie Winnie.



2016 MotorHome  
READERS' CHOICE  
WINNER  
Class C



31K Infinity with Glazed Driftwood Cabinetry

The comfortable lounge puts you right at home with your choice of décor and an abundance of cabinetry in your choice of Honey Cherry, Glazed Driftwood, or Coffee-Glazed Vienna Maple finish. The 22R, 26A, and 31K provide a central U-shaped dinette for eating and gathering. A sofa/bed and traditional dinette expand your seating options in the 25B, 31D, and 31G. You will appreciate how easily these furniture pieces convert into sleeping areas for your kids or guests. An HDTV with a built-in DVD player comes standard, which can be upgraded to a larger model when you select the Premium Package (31K). This package includes several interior enhancements such as MCD solar/blackout roller shades, Primera cab seat coverings, stylish window treatments, and a host of additional amenities.



Available MCD Solar/Blackout Roller Shades



Cab Seats Swiveled



31K U-Shaped Dinette



31K Available Front Overhead Bed



31K Available TrueComfort+ Sofa



31K U-Shaped Dinette as Bed



31K Available TrueComfort+ Sofa as Bed



The Minnie Winnie has your meals covered with a microwave oven, 3-burner range and 2-door refrigerator/freezer. Several available upgrade packages provide options for additional amenities such as Corian® countertops, a microwave/convection oven and a 4-door refrigerator/freezer. The available Dream Dinette™ tabletop lets you adjust the table height in a snap to better enjoy your prepared cuisine.





31K Bedroom

Enjoy a corner bed in the shorter models or a private master bedroom with a walk-around queen bed in the 26-foot and longer floorplans. The 31G even comes with bunk beds for extra comfort and economies of space for larger families. Watch the news before you snooze by selecting the available bedroom HDTV.



31K Vanity



31K Shower Skylight



31K Shower



31K Wardrobe



31K Shirt Closet



31K Bath



Dash

Take advantage of responsive, hill-climbing performance from a SEFI Triton V10 engine with 6-speed automatic transmission. The adjustable cab seats can be upgraded with a swivel seat pedestal (26A, 31D and 31K) to become part of the lounge when you are not on the road. For additional safety and entertainment, upgrade the cab stereo to a 6.2" touchscreen system that includes a rearview monitor, MP3 connection and a handheld remote.



Available Infotainment Center



Available Powered Mirror with Defrost and Camera

Bring more with you in the lighted rear storage trunk that comes standard in every Minnie Winnie floorplan. In fact, all exterior compartments are optimally configured to increase your storage capacity and ease your connections at the campsite. The standard patio awning can be upgraded to a powered patio awning with LED lighting so you're ready to relax at the push of a button. The 31G takes outdoor living to the next level with the available Tailgate Package that includes an HDTV, DVD stereo system, mini fridge, and wash station.



31K Available Powered Patio Awning with LED Lighting



Running Board



Exterior Service Center



31K Entrance Screen



Available Stainless Steel Wheel Liners



31K Exterior Rear Storage



## Fiberglass Roof

The one-piece fiberglass roof is backed by a 10-year limited parts-and-labor roof skin warranty.

## Thermo-Panel® Sidewalls

By layering fiberglass and high-density block foam insulation with welded aluminum support structures, we create some of the industry's strongest, most durable, and lightweight sidewalls.

**E-Coating** An electrodeposition coating helps protect critical steel components.

**Embedded Steel** Metal substructures embedded into the sidewall provide solid attachment points to keep cabinets and appliances mounted securely in place.

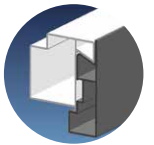
**Solid Framework** Structural extruded aluminum creates an extremely strong and solid frame.

## Laser-Cut Tubing

Precision laser cutters create precise joints in structural steel that are stronger and require less welding.



**Interlocking Joints** Specially engineered interlocking joints connect the floor, sidewalls, and roof where competitors often rely on simple screws to bear the weight.



# SUPER STRUCTURE

BUILT TO LAST

Every coach—from our smallest Class C to our largest diesel-pusher model—is built to Winnebago's® legendary SuperStructure® construction design. It's a process developed and refined over more than 50 years of building some of the strongest, most durable coaches in the industry.

Choose from four collections and three wood finishes.

## Legend



Primera



Feature Fabric



Bed Cover (22R, 25B)



Bedspread (NA 22R, 25B)



Laminate Countertop



Corian Galley Countertop  
(Premium Package Upgrade)



Vinyl Flooring



Coffee-Glazed  
Vienna Maple



Honey Cherry



Glazed Driftwood

Winnebago® reserves the right to change décor materials and specifications without notice or obligation.

Choose from four collections and three wood finishes.

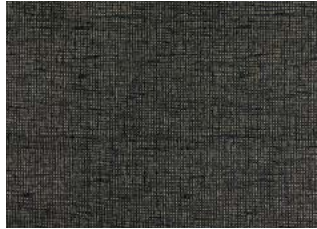
## Infinity



Primera



Feature Fabric



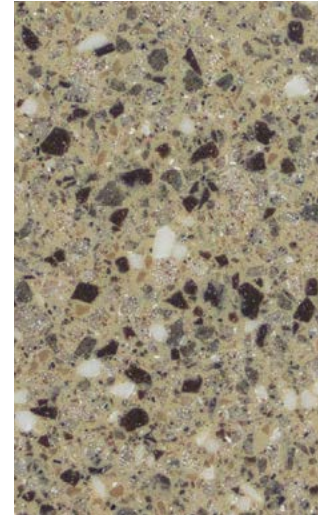
Bed Cover (22R, 25B)



Bedsread (NA 22R, 25B)



Laminate Countertop



Corian Galley Countertop  
(Premium Package Upgrade)



Vinyl Flooring



Coffee-Glazed  
Vienna Maple



Honey Cherry



Glazed Driftwood

*Winnebago® reserves the right to change décor materials and specifications without notice or obligation.*

Choose from four collections and three wood finishes.

## Rockslide



Primera



Feature Fabric



Bed Cover (22R, 25B)



Bedsread (NA 22R, 25B)



Laminate Countertop



Corian Galley Countertop  
(Premium Package Upgrade)



Vinyl Flooring



Coffee-Glazed  
Vienna Maple



Honey Cherry



Glazed Driftwood

Winnebago® reserves the right to change décor materials and specifications without notice or obligation.

Choose from four collections and three wood finishes.

## Stardust



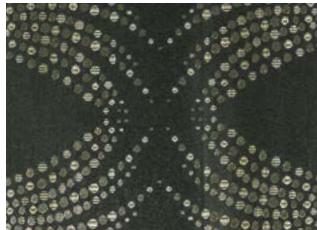
Primera



Feature Fabric



Bed Cover (22R, 25B)



Bedspread (NA 22R, 25B)



Laminate Countertop



Corian Galley Countertop  
(Premium Package Upgrade)



Vinyl Flooring



Coffee-Glazed  
Vienna Maple



Honey Cherry



Glazed Driftwood

Winnebago® reserves the right to change décor materials and specifications without notice or obligation.

Choose from three stylish graphics selections with an optional front cap upgrade.



Available Front Cap

**Polar Tuscan Gold**  
STANDARD GRAPHICS

Choose from three stylish graphics selections with an optional front cap upgrade.



Available Front Cap

**Tuscan Gold**  
STANDARD GRAPHICS

Choose from three stylish graphics selections with an optional front cap upgrade.



Available Front Cap

**Bronze Mist**  
DELUXE GRAPHICS

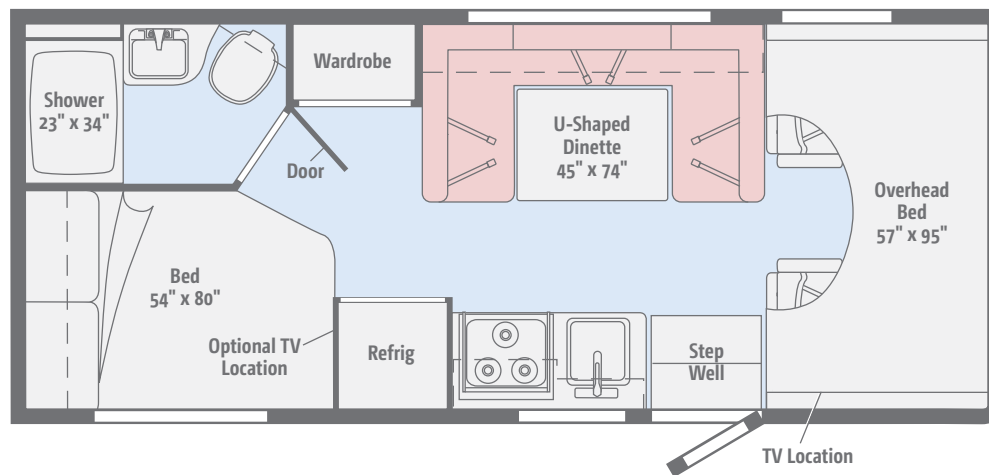




Click here to explore this floorplan's web page.

## 22R

The compact 22R has plenty of room for you in the U-shaped dinette, a large wardrobe, and a rear storage compartment.

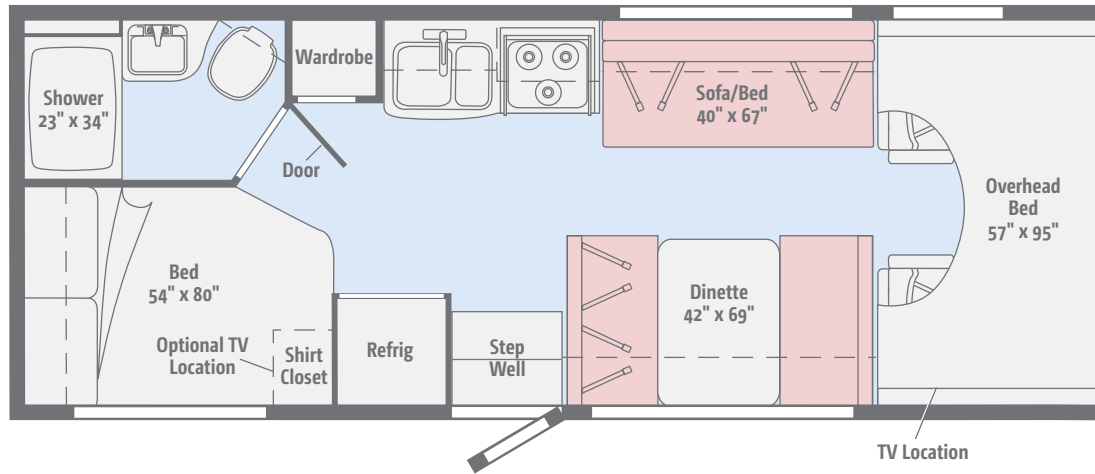




Click here to explore this floorplan's web page.

## 25B

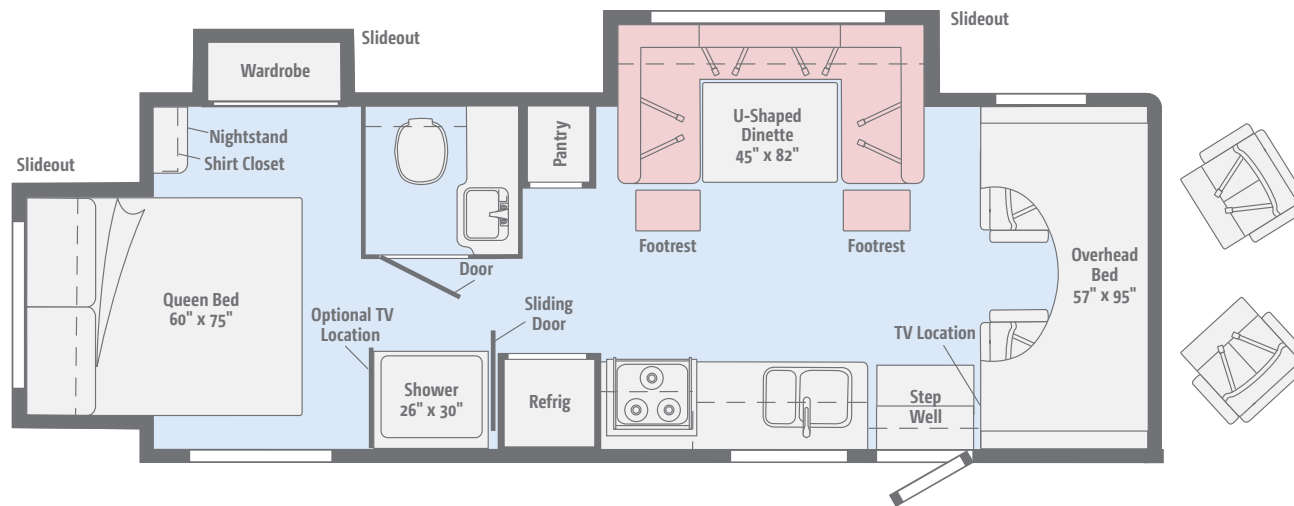
Sleep, eat, and live with up to six people comfortably in this 25-foot floorplan that features a corner bed, trunk storage, and your choice of a sofa/bed or sofa/dinette.



[Click here to explore this floorplan's web page.](#)

## NEW 26A

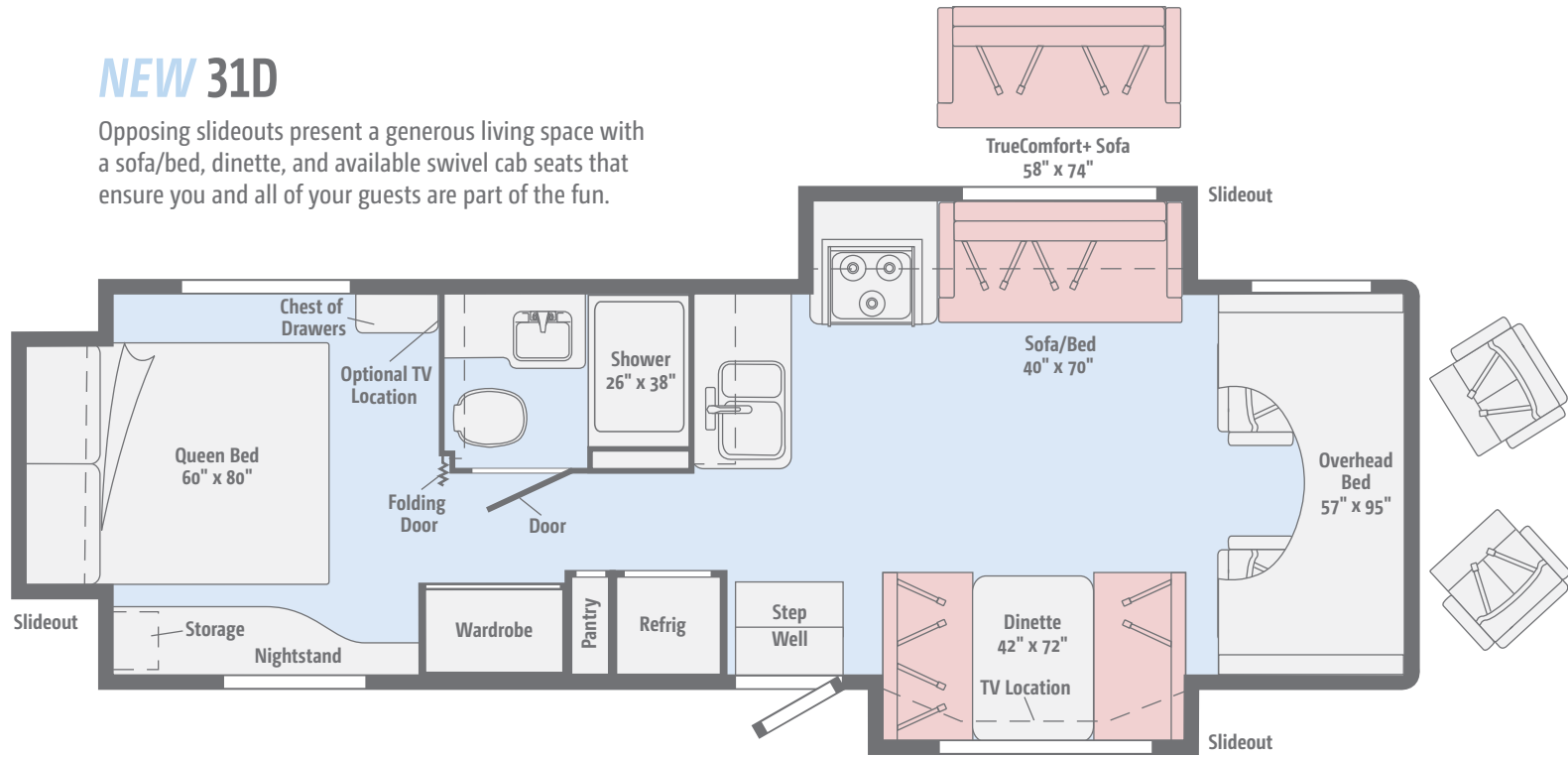
Three slideouts present a generous living area with a U-shaped dinette and a large private master bedroom with a wardrobe and walk-around queen bed.



[Click here to explore this floorplan's web page.](#)

## NEW 31D

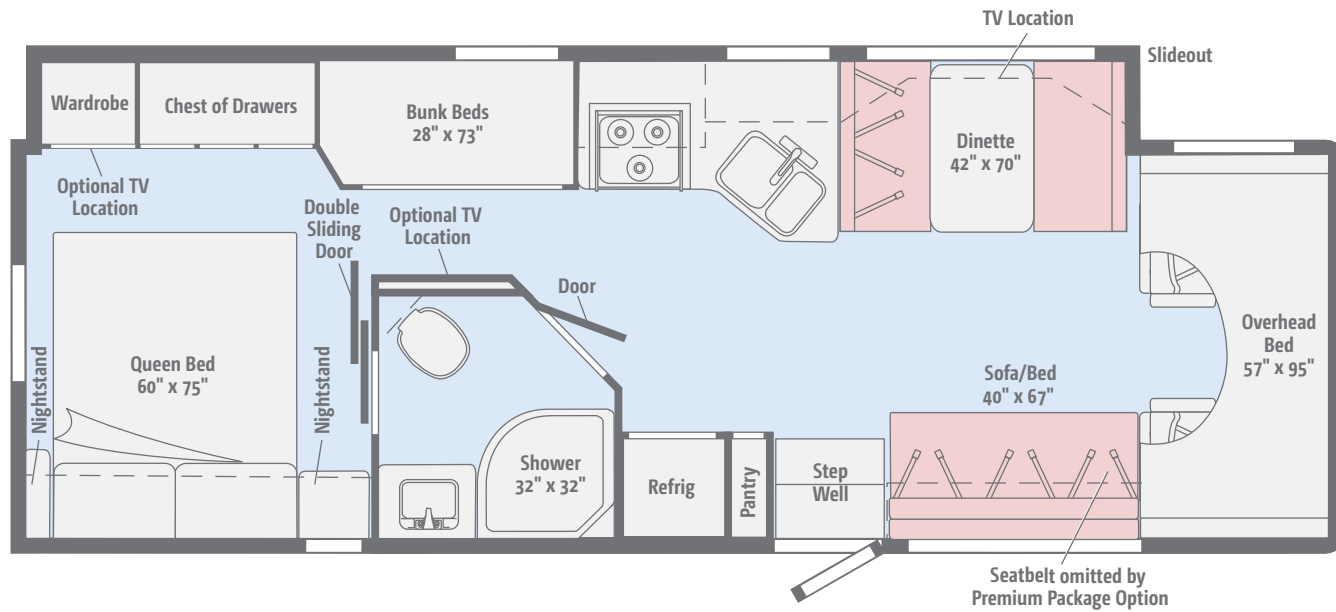
Opposing slideouts present a generous living space with a sofa/bed, dinette, and available swivel cab seats that ensure you and all of your guests are part of the fun.



[Click here to explore this floorplan's web page.](#)

## NEW 31G

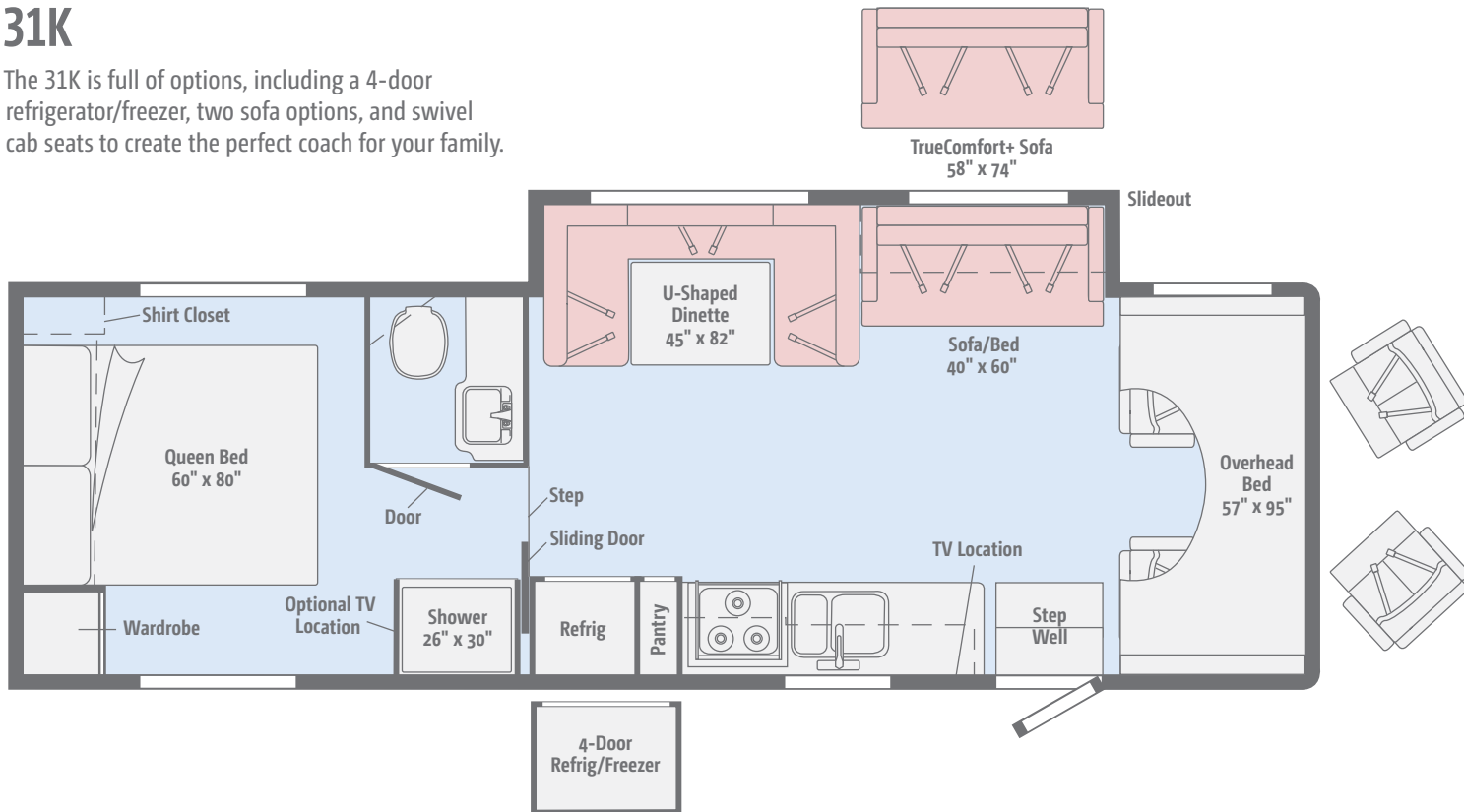
Bring the whole family in this expansive full-wall slideout floorplan that incorporates bunk beds, a private queen bed, and an available exterior tailgate package.



[Click here to explore this floorplan's web page.](#)

## 31K

The 31K is full of options, including a 4-door refrigerator/freezer, two sofa options, and swivel cab seats to create the perfect coach for your family.



Weights & Measures	22R	25B	26A	31D	31G	31K
Length	23'10"	26'2"	27'1"	32'9"	32'9"	32'9"
Exterior Height <sup>1</sup>	11'	11'	11'1"	11'1"	11'1"	11'1"
Exterior Width <sup>2</sup>	8'5.5"	8'5.5"	8'5.5"	8'5.5"	8'5.5"	8'5.5"
Exterior Storage <sup>3</sup> (cu. ft.)	61.1	76	45	92.9	86.1	101
Awning Length	14'	17'	18'	17'	19'	20'
Interior Height	6'10"	6'10"	6'10"/6'5.5"***	6'10"/6'5.5"***	6'10"/6'5.5"***	6'10"/6'5.5"***
Interior Width	8'	8'	8'	8'	8'	8'
Freshwater Tank Capacity <sup>4</sup> (gal.)	40	40	40	44	44	44
Water Heater Capacity (gal.)	6	6	6	6	6	6
Holding Tank Capacity - Black/Gray <sup>4</sup> (gal.)	21/24	23/27	35/32	37/30	37/57	30/30
LP Capacity <sup>5</sup> (gal.)	18	18	18	18	18	18
Fuel Capacity (gal.)	55	55	55	55	55	55
GCWR <sup>6</sup> (lbs.)	18,500 <sup>A</sup> /22,000 <sup>B</sup>	18,500 <sup>A</sup> /22,000 <sup>B</sup>	22,000 <sup>B</sup>	22,000 <sup>B</sup>	22,000 <sup>B</sup>	22,000 <sup>B</sup>
GVWR (lbs.)	11,500 <sup>A</sup> /14,500 <sup>B</sup>	11,500 <sup>A</sup> /14,500 <sup>B</sup>	14,500 <sup>B</sup>	14,500 <sup>B</sup>	14,500 <sup>B</sup>	14,500 <sup>B</sup>
GAWR - Front (lbs.)	4,600 <sup>A</sup> /5,000 <sup>B</sup>	4,600 <sup>A</sup> /5,000 <sup>B</sup>	5,000 <sup>B</sup>	5,000 <sup>B</sup>	5,000 <sup>B</sup>	5,000 <sup>B</sup>
GAWR - Rear (lbs.)	7,800 <sup>A</sup> /9,600 <sup>B</sup>	7,800 <sup>A</sup> /9,600 <sup>B</sup>	9,600 <sup>B</sup>	9,600 <sup>B</sup>	9,600 <sup>B</sup>	9,600 <sup>B</sup>
Wheelbase	158"	182"	190"	220"	220"	220"
Seating Capacity	5	6	6	6*/7	7	7

\*Included with Premium Package \*\*Rear of Coach <sup>A</sup>Ford E350 Chassis <sup>B</sup>Ford E450 Chassis

## Optional Package Upgrades

**Convenience Package** front bunk ladder, bunk privacy curtain, additional deep-cycle, Group 24 battery, glass shower door, 3-burner range w/oven, rear ladder, Radio/Rearview Monitor System, stainless steel wheel liners and valve extenders, black tank flushing system, TrueLevel™ monitoring system

**Premium Package** (26A, 31D, 31G, 31K) Requires Convenience Package, Corian® countertop and backsplash, galley w/stainless steel undermount sink and Corian sink cover, recessed range w/oven and glass cover, Primera cab seat covers, 40" HDTV upgrade (31K), headboard upgrade (NA 26A), Dream Dinette™ table mechanism (31D, 31G), bedspread (NA 26A) w/pillow shams and fillers, power ventilator w/rain cover, electric lift, remote, exhaust airflow, DSI gas/electric water heater, dash appliqué, MCD solar/blackout roller shades (MCD blackout roller shades in bedroom), porcelain toilet w/sprayer, stainless steel bathroom sink, single-control faucets, window treatment upgrade, sofa pillows (NA 26A), frosted mirror refrigerator inserts, frosted mirror overhead door inserts, automatic generator change over switch

**Exterior Tailgate Package** (31G) 32" HDTV, stereo w/remote, AM/FM radio, DVD player w/remote, two exterior speakers, radio antenna, exterior wash station w/lighted pump switch, coiled water hose, quick-disconnect and sprayer head, refrigerator (2.6 cu. ft.), two shelves, LP QuickConnect, 110 V/AC receptacle, 24"x48" folding table

## Chassis

**Ford® E350 Chassis** 305-hp 6.8L SEFI Triton V10 engine, TorqShift 6-speed automatic transmission w/overdrive, 155-amp. alternator

**Ford E450 Chassis** 305-hp 6.8L SEFI Triton V10 engine, TorqShift 6-speed automatic transmission w/overdrive, 155-amp. alternator

### 4-wheel ABS

### Wheel covers

**Rear auxiliary springs** (31G)

**Trailer hitch**® 7,500-lb. drawbar/500-lb. maximum vertical tongue weight (NA 31D, 31G), 350-lb. maximum vertical tongue weight (31D, 31G)

## OPTIONAL EQUIPMENT

**Rear auxiliary springs** (26A, 31D, 31K)

**Hydraulic leveling jacks** (front and rear) (31D, 31G, 31K)

**Spare Tire** (NA 25B w/E350 Chassis)

## Cab Conveniences

**Radio** w/AM/FM stereo, CD player

**Cab seats** armrests, fixed lumbar support, and multi-adjustable slide/recline

### 3-point seat belts

**Airbags driver and passenger**

### 12-volt powerpoint

**Power steering** w/tilt and cruise control

### Power door locks

### Sunvisors

**Manual mirrors** w/pivoting arms

### Cab mat

## OPTIONAL EQUIPMENT

**Swivel cab seat pedestal** (26A, 31D, 31K) (driver and passenger)

**Radio/Rearview Monitor System** DVD receiver with 6.2" LCD color touch screen, handheld remote, iPod®/MP3 input, rear color camera, Bluetooth®, SiriusXM® (includes 90-day trial subscription), Spotify®, AppRadio One (included w/Convenience Package)

**Mirrors** w/defrost, remote and video camera (requires Convenience Package)

**SiriusXM®** satellite radio prep, receiver, antenna (subscription not included) (requires Convenience Package)

## Interior

**Amplified digital HDTV antenna**

**Pleated night shades** (lounge, dinette, and bedroom)

**Mini blinds** (galley, bath)

**Systems monitor panel**

**Roof vent** (bedroom and front bunk area)

**Blackout cab divider curtain** (22R, 25B, 31G)

**Front wraparound curtain** (26A, 31D, 31K)

**Tinted windows**

**Vinyl ceiling**

**USB charger** (dinette and bedroom)

**LED lighting**

**32" HDTV** w/DVD player

**Vinyl flooring throughout**

**Assist bar**

## OPTIONAL EQUIPMENT

**Dual-glazed, thermo-insulated windows** (NA 25B w/E350 Chassis)

**Sofa sleeper** (31D, 31K)

## Galley

**Microwave oven** w/touch control  
**3-burner range top** w/storage below  
**Vented range hood** w/light  
**2-door refrigerator/freezer**  
**Decorative backsplash**  
**Pantry** (NA 22R, 25B)

### OPTIONAL EQUIPMENT

**3-burner range** w/oven  
**Microwave/convection oven** w/touch control (26A, 31D, 31K, 31G)  
**4-door refrigerator/freezer** w/icemaker (31K)

## Bath

**Shower** 23"x34" (22R, 25B)  
**Shower** 26"x30" (26A, 31K)  
**Shower** 26"x38" (31D)  
**Shower** 32"x32" (31G)  
**Shower curtain** (NA 31G)  
**Shower door** (31G)  
**Flexible showerhead**  
**Skylight**  
**Towel ring(s)**  
**Powered roof vent**  
**Toilet** w/foot pedal  
**Tissue holder**  
**Robe hook(s)**  
**Towel bar(s)** (31D, 31G)

## Bedroom

**Double bed** w/2" foam mattress topper and mattress cover (22R, 25B)  
**Queen bed** w/foam mattress and mattress cover (26A)  
**Queen bed** w/foam mattress and bedspread (31D, 31G, 31K)  
**Headboard** (NA 26A)  
**Bunk beds** w/covered foam mattresses, mattress covers, storage compartment, and privacy curtains (31G)

### OPTIONAL EQUIPMENT

**24" HDTV**  
**Bunk bed 24" HDTV** (31G)

## Exterior

**Premium high-gloss fiberglass skin**  
**Porch light** w/interior switch  
**Running boards**  
**Large lighted trunk storage compartment**  
**Patio awning**

### OPTIONAL EQUIPMENT

**Powered patio awning** w/LED lighting  
**Molded front cap** (NA 25B w/E350 Chassis)

## Heating & Cooling

**20,000 BTU furnace** (22R, 25B)  
**30,000 BTU furnace** (26A, 31D, 31G, 31K)  
**Coleman®-Mach® 15 A/C**

## Electrical System

**AC/DC load center, 55-amp. converter/charger**  
**30-amp. power cord**  
**TV jack and AC receptacle near entrance door**  
**Deep-cycle, Group 24 battery**  
**Coach battery disconnect system**  
**Automatic dual-battery charge control**  
**4,000-watt Cummins Onan® Microquiet™ generator**  
**Auxiliary start circuit**

### OPTIONAL EQUIPMENT

**2 deep-cycle batteries included** w/Convenience Package

## Plumbing System

**Pressurized city water hookup** w/tank fill  
**On-demand water pump**  
**6-gallon LP water heater** w/electronic ignition  
**Permanent-mount LP tank** w/gauge

### OPTIONAL EQUIPMENT

**Heated holding tanks**

## Safety

**LP, smoke, and carbon monoxide detectors**  
**10 BC fire extinguisher**  
**Ground fault interrupter**  
**Child seat tether anchor**

## Warranty<sup>7</sup>

**12-month/15,000-mile basic limited warranty<sup>8</sup>**  
**36-month/36,000-mile limited warranty on structure<sup>8</sup>**  
**10-year limited parts-and-labor warranty on roof skin<sup>8</sup>**

### FOOTNOTES

1. The height of each model is measured to the top of the tallest standard feature and is based on the curb weight of a typically equipped unit. The actual height of your vehicle may vary by several inches depending on chassis or equipment variations. Please check with your dealer for further information.
2. Floorplans feature a wide-body design - over 96" in making your purchase decision, you should be aware that some states restrict access on some or all state roads to 96" in body width. Before making your purchase decision, you should confirm the road usage laws in the states of interest to you.
3. The load capacity of your motorhome is designated by weight, not by volume, so you cannot necessarily use all available space when loading your motorhome.
4. Capacities are based on measurements prior to tank installation. Slight capacity variations can result due to installation applications.
5. Capacities shown are tank manufacturer's listed water capacity (W.C.). Actual filled LP capacity is 80% of listing due to overfilling prevention device on tank.
6. Actual towing capacity is dependent on your particular loading and towing circumstances which includes the GVWR, GAWR, and GCWR as well as adequate trailer brakes. Please refer to the Operator's Manual of your vehicle for further towing information.
7. See separate chassis warranty.
8. See your dealer for complete warranty information.

NA Not Available

Not all items available in combination. See dealer for details.

Winnebago's continuing program of product improvement makes specifications, equipment, model availability, and prices subject to change without notice. Published content reflects the most current product information at time of printing. Please consult your dealer for individual vehicle features and specifications.







Let us host  
your next

# Adventure



[WGOAdventures.com](http://WGOAdventures.com)



## WINNEBAGO™

RV INSURANCE



From RV to personal insurance, Winnebago RV Insurance can provide all the coverage and services you need to feel at home on the road.

**For more information:**  
**(800) 642-4892**

Connect with Winnebago (Click one of the following)



Like us



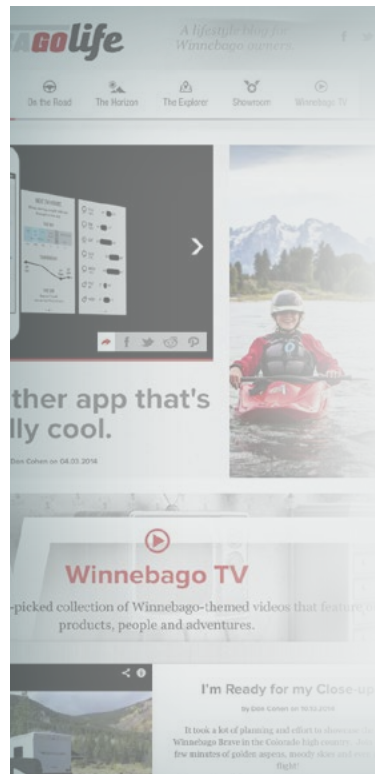
Follow us



Watch us

## WinnebagoInd.com Has All The Answers

Visit [WinnebagoInd.com](http://WinnebagoInd.com) on your computer, smartphone, or tablet for the latest product information and updates.



## Welcome to GoLife!

Visit our lifestyle blog for motorhome news, personal travelogues, and community stories.

[WinnebagoLife.com](http://WinnebagoLife.com)

# GoLife

# **PREFERRED CARE PROGRAM**

We back our motorhomes with best-in-class support both before and after the sale:

- 12-month/15,000-mile basic limited warranty
- 36-month/36,000-mile limited warranty on structure
- 10-year limited parts-and-labor warranty on fiberglass roof
- Complimentary 24-hour roadside assistance program
- TripSaver® Fast Track Parts guarantees that in-stock warranty parts ship directly to your dealer within 24 hours
- National dealer service network



For more information:  
[WGOService.com](http://WGOService.com)



## **WIT CLUB**

### Join the Club, Join the Fun

Here's the perfect way to begin your life on the road as the owner of a new Winnebago – by joining the exclusive WIT Club. Start your adventure with other fun-loving WIT Club members from across the country and get the most out of your new Winnebago motorhome.



#### Members enjoy:

- Caravans and rallies
- Newsletters
- Local and state group activities
- RV travel benefits

See more at  
[WITClub.com](http://WITClub.com)



### Grand National Rally

Each year, thousands of Winnebago owners descend upon Forest City, Iowa. Rally-goers enjoy an unforgettable week reconnecting with friends, taking tours, participating in activities, and more. Join the adventure next July!

# **WINNEBAGO**<sup>IND</sup>

## CONTACT US

### GENERAL INQUIRIES

Corporate Switchboard  
(641) 585-3535

### CURRENT PRODUCT OWNER AND SERVICE-RELATED INQUIRIES

(800) 537-1885  
or [@winnebagoind.com](mailto:@winnebagoind.com)

### NEW VEHICLE SALES INQUIRIES

[sales@winnebagoind.com](mailto:sales@winnebagoind.com)

### FAX

(641) 585-6966

### POSTAL ADDRESS

Winnebago Industries, Inc.  
P.O. Box 152  
Forest City, IA 50436

### STREET ADDRESS

Winnebago Industries, Inc.  
605 West Crystal Lake Road  
Forest City, IA 50436