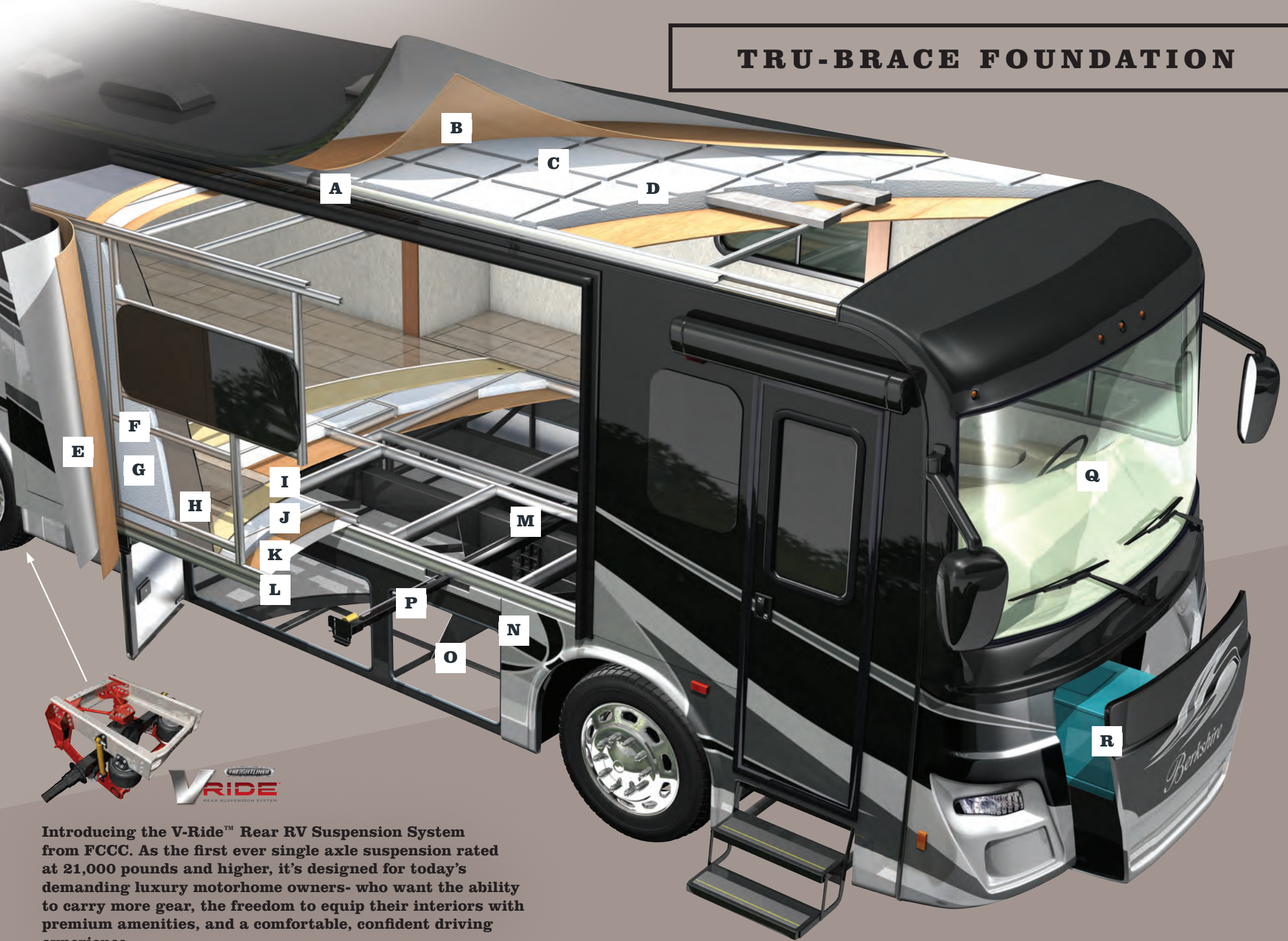


Berkshire



TRU-BRACE FOUNDATION



Introducing the V-Ride™ Rear RV Suspension System from FCCC. As the first ever single axle suspension rated at 21,000 pounds and higher, it's designed for today's demanding luxury motorhome owners- who want the ability to carry more gear, the freedom to equip their interiors with premium amenities, and a comfortable, confident driving experience.



1 6" ROOF AT THE CROWN, WELDED ALUMINUM TUBE - LAMINATED VACUUM BONDED WITH INTEGRATED A/C DUCTING.

A FRAMING IS WELDED 2" ALUMINUM TUBE

B LAYERED STRUCTURAL 1 PIECE FIBERGLASS

C 5-1/4" RADIUS POLYSTYRENE INSULATION

D GALVANIZED METAL BACKERS FOR A/C'S, SATELLITE, SOLAR PANEL AND ANTENNAE

2 1-7/8" THICK SIDEWALL, WELDED ALUMINUM TUBE - LAMINATED VACUUM BONDED.

E LAYERED STRUCTURAL FIBERGLASS SIDEWALL

F HEAVY WALL ALUMINUM TUBE AROUND PERIMETER AND AROUND SLIDE OPENINGS

G 1-1/2" POLYSTYRENE INSULATION

H 1/8" INTERIOR DÉCOR FINISHING BOARD

3 3-1/8" FLOOR, VACUUM BONDED LAMINATED

I FRAMING IS WELDED 2-1/2" ALUMINUM TUBE.

J 2-1/2" POLYSTYRENE INSULATION

K 1 PIECE 1/2" STRUCTURE BOARD

L DARCO, A WATERPROOF UNDERBELLY MATERIAL

4 FULL PAINT WELDED STEEL CHASSIS STRUCTURE

M TRU-BRACE, CHASSIS STIFFENER SYSTEM

N 1 PIECE ALUMINIZED STEEL SIDE SKIRT

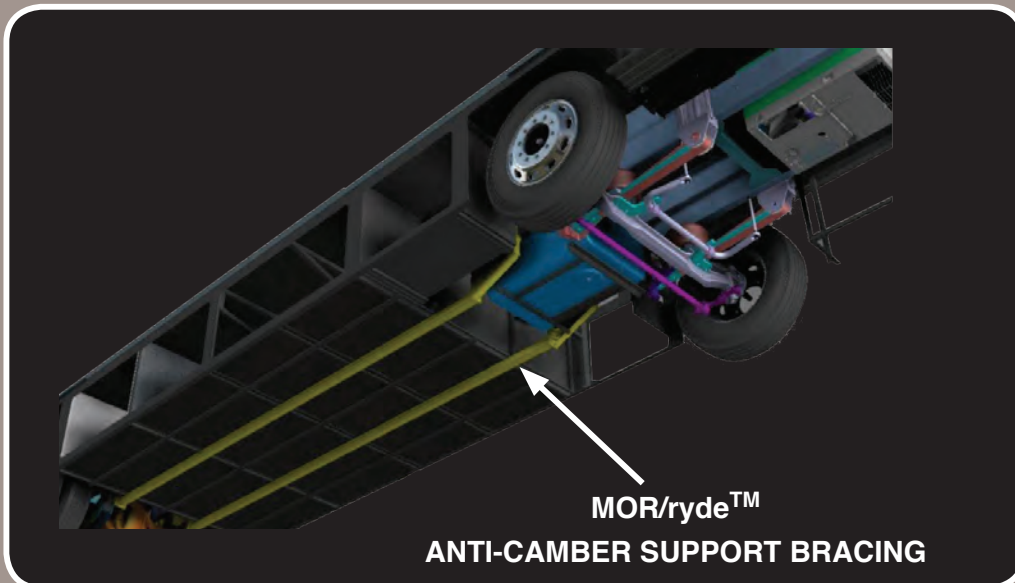
O 1 PIECE BENT STEEL STORAGE COMPARTMENTS

P 1-1/2" INSULATED STEEL TUBE FIREWALL

5 FIBERGLASS MOLDED FRONT AND REAR CAPS

Q 1 PIECE AUTOMOTIVE GRADE BONDED WINDSHIELD

R GENERATOR SLIDE SYSTEM



FOR MORE INFORMATION PLEASE VISIT
WWW.FORESTRIVERINC.COM/BERKSHIRE

Berkshire



Berkshire



ALL PICTURES MODEL 39A FEATURING NATIVE CHERRY WOOD GRAIN AND ASPEN INTERIOR DECOR



STANDARDS + OPTIONS

CHASSIS

- Freightliner XCR Raised Rail Chassis
- Cummins ISB Turbo Diesel, 360HP@2600RPM, 800 LB/FT Torque @1800 RPM
- Allison 3000MH 6-Speed Transmission
- 120V Engine Heater 750w
- 22.5" Polished Aluminum Wheels
- Michelin X Line Energy Z 275/80R22.5 Tires
- Trailer Hitch, 10,000 Lb. Capacity
- Allison Electronic Push Button Shifter
- 100 Gallon, Locking Dual Fill Fuel Tank
- Driver Side Fill, 13 Gallon DEF Tank
- Day Time Running Lights
- 7-Pin Tow Power Connector
- 18.7 CFM Air Compressor
- Farr Eco-Air Cleaner
- Power Steering
- Washer/Heavy Duty-Wiper w/Intermittent Function
- Two 1900 CCA Maint. Free Chassis Batteries
- Full Air ABS Brakes w/ Auto Slack Adjuster
- Variable Exhaust Brake
- Telescopic/Tilt Steering Wheel
- Suspension Neway Front And V- Ride Rear
- Sachs Custom Tuned Shock Absorbers
- 55 Degree Wheel Cut
- Auto Air Suspension Deflation System
- Cross Flow, Rear Mounted Radiator
- 5 Year / 100,000 Mile Coolant (Some Maintenance Required)
- 4-Spoke VIP Black Steering Wheel
- Electronic Cruise Control with High Idle

CONSTRUCTION AND EXTERIOR

- Fiberglass Front And Rear Caps
- Full Body Painted Exterior (4X Clear Coat)
- Four (4) Point Fully Auto Hydraulic Leveling System w/Auto Air Dump
- Steel Basement Structure
- TRU-BRACE Chassis Support System

- Rust Resistant Aluminized Steel Chassis Skirts
- Diamond Shield Front Mask Protective Film
- One Piece Fiberglass Roof
- Top-Mount Remote Exterior/Heated/Mirrors/with Cameras
- Frameless Dual Pane, Dark Tint Windows
- Automotive Foam And Ziebart Seal Undercoating
- Carefree Power Door Awning
- Carefree Latitude Patio Awning w/LED Lighting and Wind Sensor
- Carefree Slideout Topper with Covers
- Full Height Strut Assisted Compartment Doors w/Full Pass Through Storage
- "One Key" System, Exterior Compartment, Entry Door & Fuel Fill Doors
- Quiet Integrated A/C Intake/Ducting Roof System
- Crowned and Layered Vacuum Bonded Fiberglass Roof
- Vacuum Bonded 3" Floor w/Tubular Aluminum Frame
- Gel Coat Vacuum Bonded Sidewalls, Slideout Floors & Walls
- Block Foam Polystyrene Insulation in Walls Roof And Floors
- 30" Entryway
- Channeled Drains for A/Cs
- Tubular Steel Firewall w/Polystyrene Insulation
- 84" Interior Ceiling Height
- PTL Steel Entrance Door with Deadbolt
- Auxiliary Air Chuck (Front Driver Side Compartment)
- Auxiliary LP Supply, Quick Connect (Passenger Side)
- LED Marker Lights
- Full Length Mud Flap w/Chrome Forest River Name
- Slide Tray in Basement Compartment

ELECTRICAL

- 50A Service w/Auto Transfer Switch and 30' Power Cord
- 8Kw Onan Diesel Generator w/Manual Slide Tray
- Energy Management System
- Electronic House Power Disconnect Switch
- Generator Start/Stop Switch (On Dash/ Bedroom)
- Multi-Plex with Precision Plex App Control
- Dimmer Control Lighting Throughout
- Individual Reading Lights Bed Overhead
- 2000w Pure Sine Inverter/Converter
- Auto Generator Start Control
- Four (4) Six Volt Deep Cycle House Batteries
- Easy Read 12V Circuit House Load Center
- Solar Panel Controller with Roof Prep
- LED Porch and Patio Lights

PLUMBING

- Variable Speed 4 GPM Water Pump
- Individual Zoned Hot/Cold Manifold Water Supply System
- 4-Way Water Management Valve in Water Bay Compartment
- Bath - Solid Surface Under Mount Sink
- Kitchen - Stainless Steel Under Mount Sink
- Kitchen - Single Lever Faucet w/ Pull Out Sprayer
- One Piece Fiberglass Shower w/ Glass Door and Skylight
- Whole House Water Filter
- Porcelain China Bowl Toilet w/Foot Flush
- Tecma Macerator Toilet (N/A 34QS)
- Clean Easy Exterior Shower Hose
- Convenience Monitor Panel at Water Bay
- 360 Roof Vent Caps

DRIVER/PASSENGER/COCKPIT

- One Piece Windshield
- Power Front Day/Night Shades
- Passenger & Driver Window Night Shades
- Metallic Cherry Wood Grain Dash Panels
- 10" Dash Radio w/ Color Back-Up, Side View Cameras And Navigation
- Sirius/XM Satellite Roof Mounted Antenna
- Leatherette Driver Seat Swivel, Recline and 6-Way Power Adjust
- Leatherette Passenger Seat Swivel, Recline and Manual Foot Rest
- Two (2) Defroster Fans with High And Low Settings
- Multiple USB Charging Ports
- Automotive Dash AC/Heater w/Deluxe Controls
- Multiple Auxiliary Charging Ports at Dash
- Power Flush Floor Step-Well Cover
- Driver & Passenger LED Ceiling Map Lights
- Emergency/Aux Engine Start Switch at Dash
- Fitted Cockpit Floormat w/Berkshire Logo

ENTERTAINMENT

- 49" LED TV, Living Room (39A Only)
- 40" LED TV, Living Room (N/A 39A, 39B)
- 32" LED TV, Bedroom
- 22" LED TV, (2) Each Bunk with Easy Access HDMI Jack (38A Only)
- JBL Soundbar w/Integrated Sub and Bluetooth
- Roof Mount Winegard Trav'ler Satellite Prep
- Park/Cable Prep
- High Definition Cat6 Matrix Signal Distribution
- Hi-Definition Digital TV Antenna
- Blu-Ray DVD Player
- Exterior Entertainment Center in Sidewall with 32" TV & Radio with Bluetooth
- 43" LED TV (39B Only)

INTERIOR

- Polished Porcelain Tile Throughout
- Semi Gloss Hardwood w/Glazing- Cabinetry, Interior Doors and Slideout Fascia (Glazing N/A with Executive Dark Cherry Option)
- Living Room Ceiling Crown Trim
- "Soft Touch" Dream Booth Dinette with Storage Underneath
- Visionary Sofa with Hide-A-Bed
- Love Seat Sofa (39A Only)
- Polished Solid Surface Kitchen/Dinette Countertops w/Flush Sink and Stove Covers
- Full Extension Ball Bearing Metal Drawer Guides
- Galley Storage Compartment for Range and Sink Covers
- Kitchen Pantry
- Bi-Fold Doors, Bunk Beds (N/A 34QS, 39A, 39B)
- "Soft Touch" Padded Ceiling
- Roller Style Day/Night Shades
- 72"X 80" King Bed with Decor Bedding (N/A 38A)
- 60"X 80" Queen Bed with Decor Bedding (38A Only)
- Bed Night Stands, 1 with Dual USB Jack and Overhead Cabinetry
- Mirrored Vanity Overhead Cabinet Doors
- Towel Bar, Toilet Paper Holder and Towel Ring
- LP Gas, Carbon Monoxide and Smoke Detectors
- Fire Extinguisher

APPLIANCES

- 15K BTU with Heat Pump (Front) and 15K BTU (Rear) Low Profile ACs
- Holding Tank Heat Pads
- Truma Continuous Flow Hot Water
- 35,000 BTU Furnace (34QS Only)
- 42,000 BTU Furnace (N/A 34QS)
- 30" OTR Convection Microwave Oven
- 2 Door Residential Refrigerator
- Sealed 3 Burner Stainless Recessed Cooktop
- Power Fan in Bathroom with Rain Cover
- Maxxair In Galley with Wireless Remote Control and Rain Cover
- Washer/Dryer Prep

OPTIONS

- Electric Easy-Bed Lift, Cockpit Area
- 32" LED TV in Front Overhead (N/A 39A)
- Theater Seating IPO Sofa
- Electric Firepalce
- Porcelain Wood Plank Tile
- Trav'ler (Winegard) Satellite Antenna- Direct TV (Us)
- Trav'ler (Winegard) Satellite Antenna-Shaw (Canada)
- Stackable Washer/Dryer

Berkshire

Berkshire

10 FEATURES

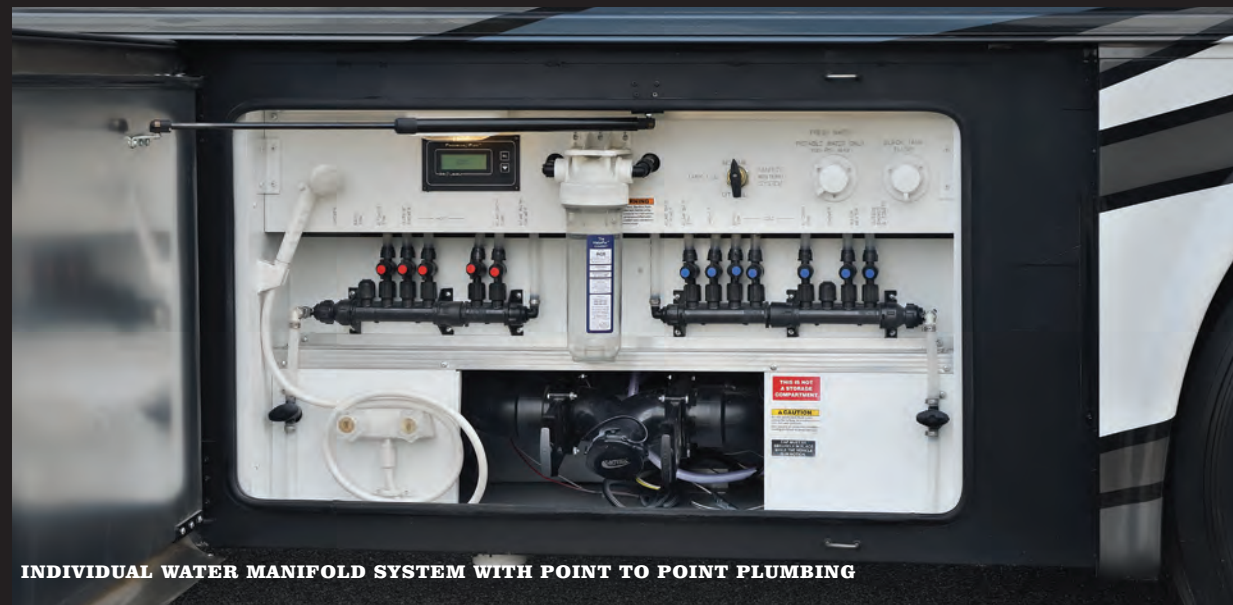
- 1 CUMMINS 6.7 L ISB TURBO DIESEL, 360HP@2600RPM, 800 LB/FT TORQUE @1800
- 2 ALLISON 3000MH 6-SPEED TRANSMISSION, 10K, TOWING
- 3 ONE (1) PIECE FIBERGLASS ROOF
- 4 FULL HEIGHT, STRUT ASSISTED, INSULATED DIESEL MOTORHOME BAGGAGE DOORS
- 5 TRUMA© TANKLESS HOT WATER HEATER
- 6 INDIVIDUAL WATER MANIFOLD SYSTEM WITH POINT TO POINT PLUMBING
- 7 RUST RESISTANT ALUMINIZED CHASSIS SKIRTS
- 8 PRECISION CIRCUITS MULTIPLEX WIRING WITH SMART PHONE APP CONTROLS
- 9 FULL WALL HYDRAULIC SLIDES
- 10 FULL BODY PAINT FEATURING 4X SIKKENS© CLEAR COAT



STANDARD EXTERIOR ENTERTAINMENT CENTER



STANDARD 8KW ONAN DIESEL GENERATOR
W/MANUAL SLIDE TRAY

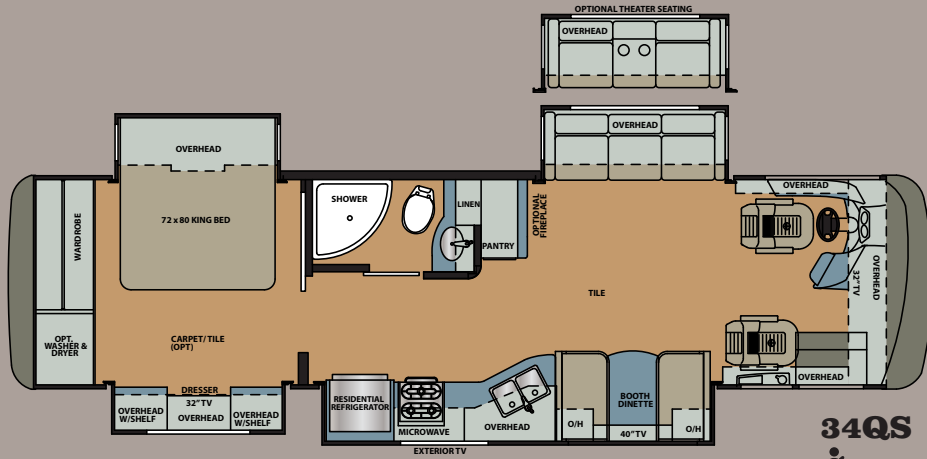


INDIVIDUAL WATER MANIFOLD SYSTEM WITH POINT TO POINT PLUMBING



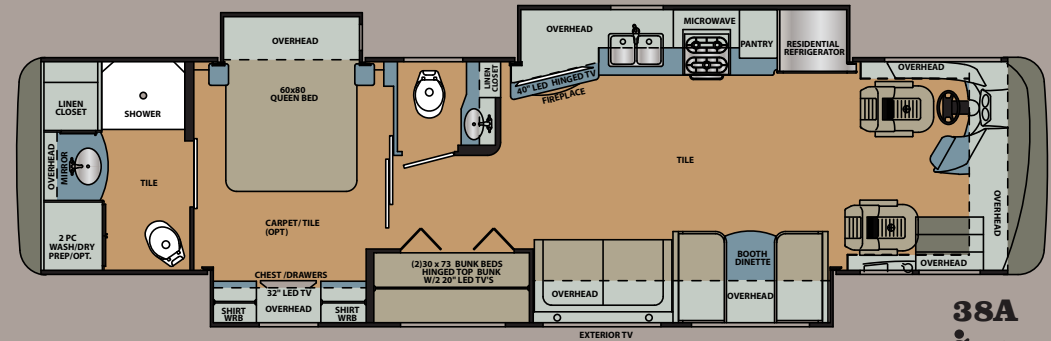
STANDARD SLIDE TRAY IN STEEL BASEMENT FULL PASS THRU STORAGE COMPARTMENT

FLOORPLANS



34QS

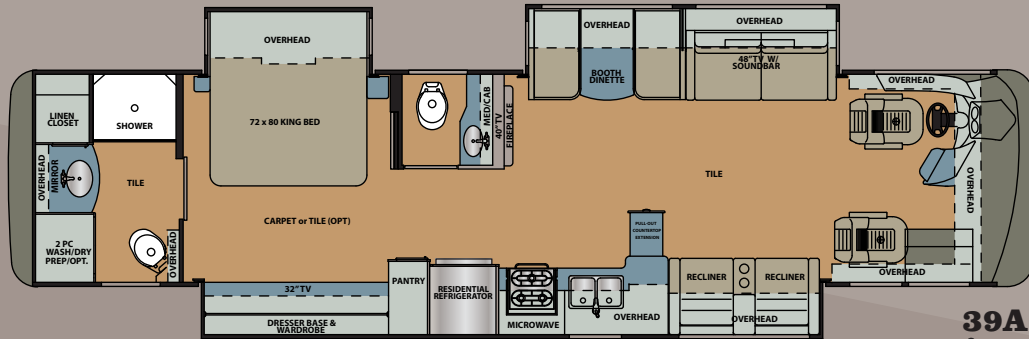
= 7
 = STD. 5
 = OPT. 7



38A

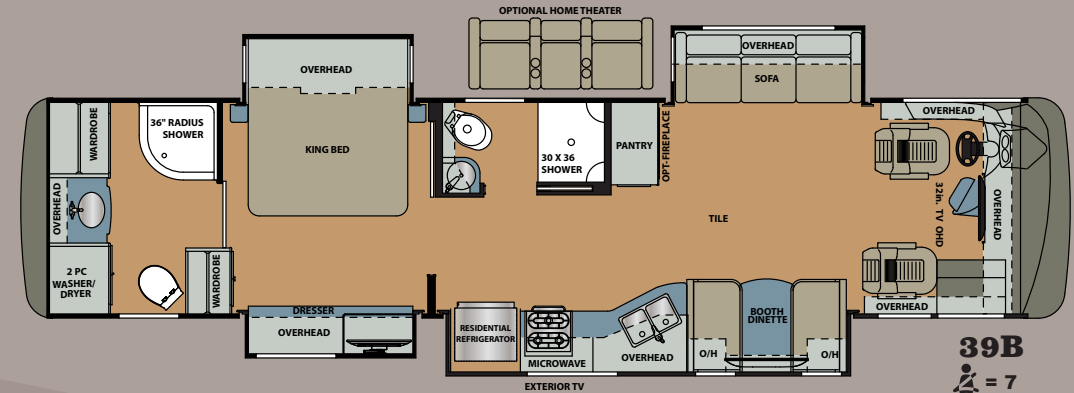
= 6
 = STD. 5
 = OPT. 7

= SEAT BELTS
 = SLEEPS
 (STD./STANDARD
 OPT./WITH OPTIONAL BED LIFT)



39A

= 8
 = STD. 5
 = OPT. 7



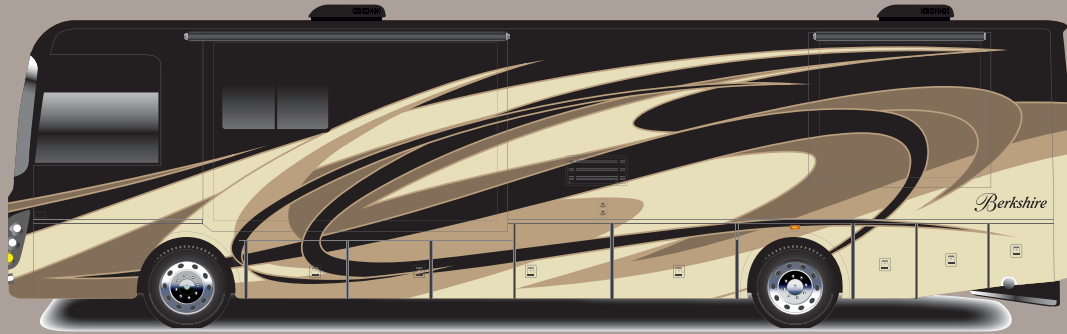
39B

= 7
 = STD. 5
 = OPT. 7

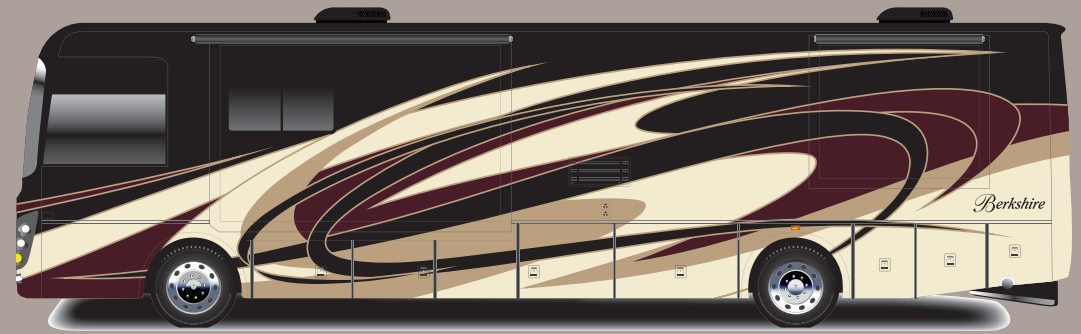
Floorplan	Length (Feet)	GVWR (Lbs.)	GCWR (Lbs.)	GAWR Front (Lbs.)	GAWR Rear (Lbs.)	Wheel-base (Inches)	Height* (Feet)	Width* (Inches)	Basement storage* (Cu. Ft.)	Awning (Feet)	Fresh Tank* (Gal.)	Gray Tank (Gal.)	Black Tank (Gal.)	LP Tank (Gal.)	Furnace (BTU's)	Hot Water
34QS	35' 7"	32,350	42,350	12,350	20,000	206"	12' 7"	100"	130'	14' 7"	103	66	42	24.5	35,000	Continuous
38A	39' 6"	33,350	43,350	12,350	21,000	252"	12' 7"	100"	183'	18' 0"	103	66	42	24.5	42,000	Continuous
39A	39' 6"	33,350	43,350	12,350	21,000	252"	12' 7"	100"	183'	18' 0"	103	66	42	24.5	42,000	Continuous
39B	39' 6"	33,350	43,350	12,350	21,000	252"	12' 7"	100"	183'	18' 0"	103	66	42	24.5	42,000	Continuous

*Fresh water tank includes quick drain valve | Please see back cover for more information regarding weights.

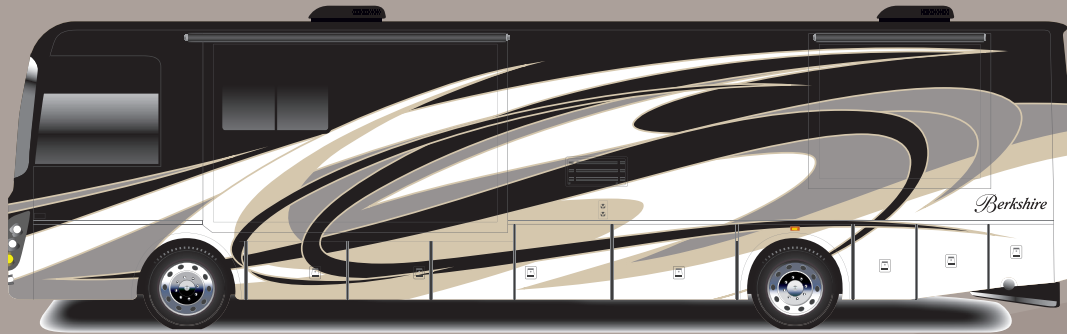
PAINT PACKAGES



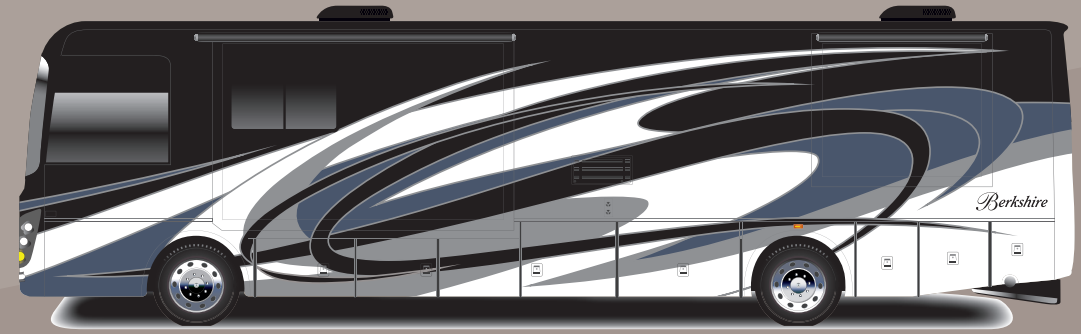
DUNE



PAINTED ROCK



NEW MOON



ISLAND

Berkshire

CUSTOMIZE YOUR INTERIOR

WOOD GRAIN OPTIONS (CHOOSE ONE)



NATIVE CHERRY

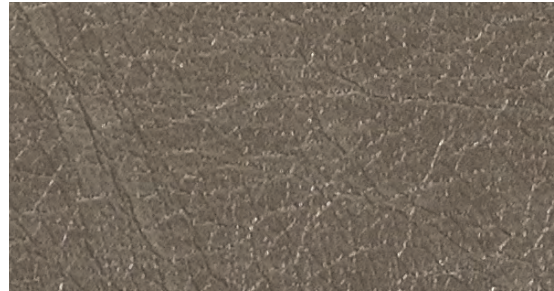


BRONZE MAPLE

LEATHERETTE OPTIONS (CHOOSE ONE)



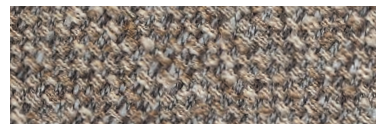
CASHMERE



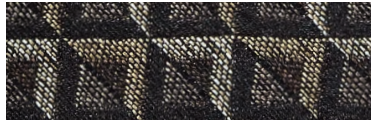
ALABASTER

DESIGNER FABRIC OPTIONS (CHOOSE ONE)

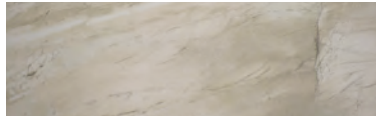
SAHARA



ASPEN



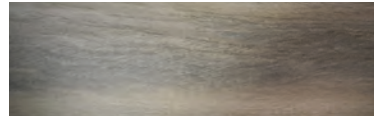
STANDARD FLOORING



STANDARD COUNTERTOP



WOOD PLANK FLOORING OPTION

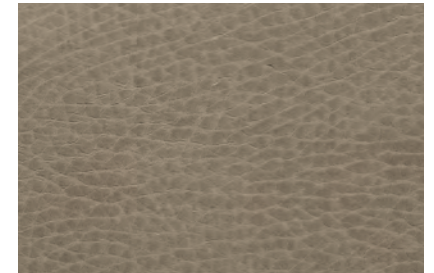


DECOR OPTIONS

MILAN FIXED INTERIOR DECOR

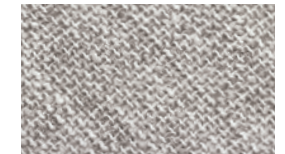


**EXECUTIVE DARK CHERRY
WOOD GRAIN**

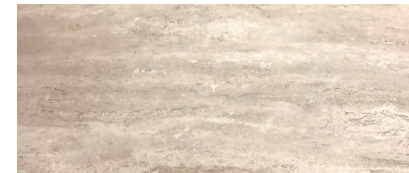


ALLISON FOG

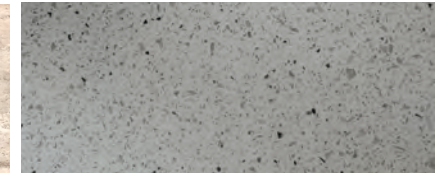
DESIGNER FABRICS



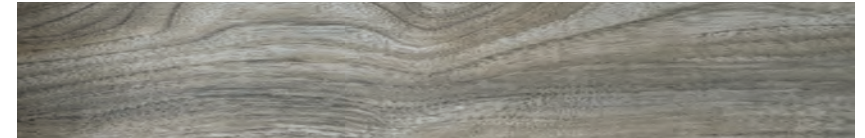
MILAN FLOORING



MILAN COUNTERTOP



MILAN WOOD PLANK FLOORING OPTION



CUSTOMER SATISFACTION



www.ForestRiverBuyLocal.com



PRE-DELIVERY INSPECTION FACILITY
20,000 square feet of quality assurance. The bare essentials for a premium product. This state-of-the-art facility gives immediate daily feedback to production for quality assurance in every unit built.



GVWR (Gross Vehicle Weight Rating) - is the maximum permissible weight of the unit when fully loaded. It includes all weights, inclusive of all fluids, occupants, cargo, optional equipment and accessories. For safety and product performance do NOT exceed the GVWR.

GCWR (Gross Combined Weight Rating) - Is the maximum permissible loaded weight of your motor home and any towed trailer or towed vehicle. Actual GCWR of this vehicle may be limited by the sum of the GVWR and the installed hitch receiver maximum capacity rating; see hitch rating label for detail.

GAWR (Gross Axle Weight Rating) - is the maximum permissible weight, including cargo, fluids, optional equipment and accessories that can be safely supported by each axle.

UVW (Unloaded Vehicle Weight)* - is the typical weight of the unit as manufactured at the factory. It includes all weight at the unit's axle(s), including full fuel, all fluids and LP Gas. The UVW does not include cargo, fresh potable water, additional optional equipment or dealer installed accessories.

*Estimated Average based on standard build optional equipment.

CCC (Cargo Carrying Capacity)** - is the amount of weight available for fresh potable water, cargo, passengers, additional optional equipment and accessories. CCC is equal to GVWR minus UVW. Available CCC should accommodate fresh potable water (8.3 lbs per gallon). Before filling the fresh water tank, empty the black and gray tanks to provide for more cargo capacity.

** Estimated average based on standard build optional equipment.

Each Forest River RV is weighed at the manufacturing facility prior to shipping. A label identifying the unloaded vehicle weight of the actual unit and the cargo carrying capacity is applied to every Forest River RV prior to leaving our facilities.

The load capacity of your unit is designated by weight, not by volume, so you cannot necessarily use all available space when loading your unit.

Actual towing capacity is dependent upon your particular loading and towing circumstances, which includes the GVWR, GAWR and GCWR as well as adequate trailer brakes. Please refer to the Operator's Manual of your vehicle for further towing information.

Berkshire



Learn More
Scan this barcode using a QR Reader on your smart phone to learn more about Forest River.



A Berkshire Hathaway company.

Forest River Diesel Division
1800 W. Hively Ave.
Elkhart, IN 46517
(574) 522-3693
www.forestriverinc.com
www.forestriveraccessories.com

All information contained in this brochure is believed to be accurate at the time of publication. However, during the model year, it may be necessary to make revisions and Forest River, Inc., reserves the right to make all such changes without notice, including prices, colors, materials, equipment and specifications as well as the addition of new models and the discontinuance of models shown in this brochure. Therefore, please consult with your Forest River dealer and confirm the existence of any materials, design or specifications that are material to your purchase decision.

FREE MEMBERSHIP
to Forest River Owners' Group

www.forestriverfrog.com

©Berkshire - a division of Forest River Inc.
A Berkshire Hathaway company

