

# **SURVEYOR**

FOREST RIVER

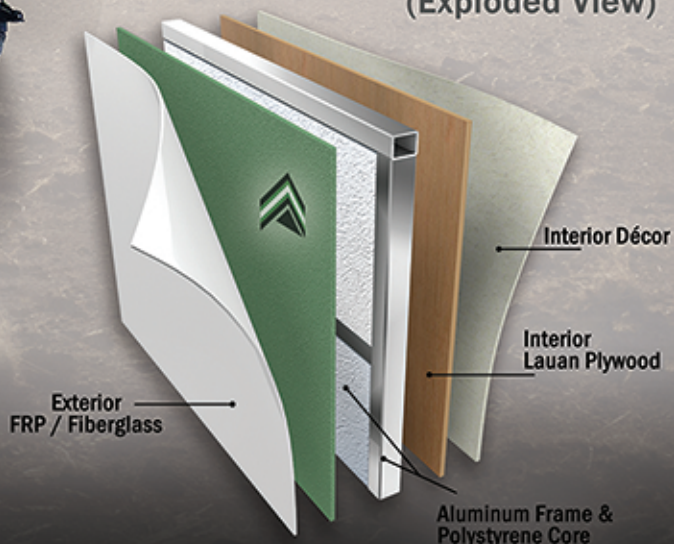
FEATURING ▶



We use AZDEL ONBOARD® composite material in place of plywood during your RV's exterior side, rear, front and slide room wall construction.

The panels are produced using a patented blend of polypropylene and fiberglass to create technologically superior walls that will help extend the life of your RV.

RV Sidewall Cut-Away  
(Exploded View)



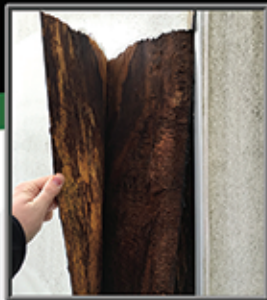
*"We travel not to escape life,  
but for life to not escape us"*



Water and moisture damage tops the list of the most common issues requiring a major repair.

As an RV buyer, would you like to reduce your risk of this?

**WE HAVE THE SOLUTION!**



## How Do AZDEL ONBOARD® Composite Panels Improve Your RV's Construction & Performance?

Weight matters. Half the weight of lauan plywood means easier towing & better fuel efficiency.



Water and moisture resistant. No mold, mildew, warping or rot!

Unaffected by freezing and warming cycles, helping to prevent delamination



No formaldehyde or other toxic chemicals or materials

Superior insulating properties



Sustainable; no deforestation occurs for its production

Sound absorbing material offers better noise barrier



Longer RV Life

[www.AzdelOnboard.com](http://www.AzdelOnboard.com)



Like/Follow @ AzdelOnboard1

email: [onboard@azdel.com](mailto:onboard@azdel.com)



2000 Enterprise Drive  
Forest, VA 24551

2200 Centerwood Drive  
Warren, MI 48091

18536 US Highway 20, Ste E  
Goshen, IN 46528