

FREELANDER



FREELANDER

CLASS C MOTORHOMES



FREELANDER INTERIOR FEATURES



26RS shown with Pewter décor

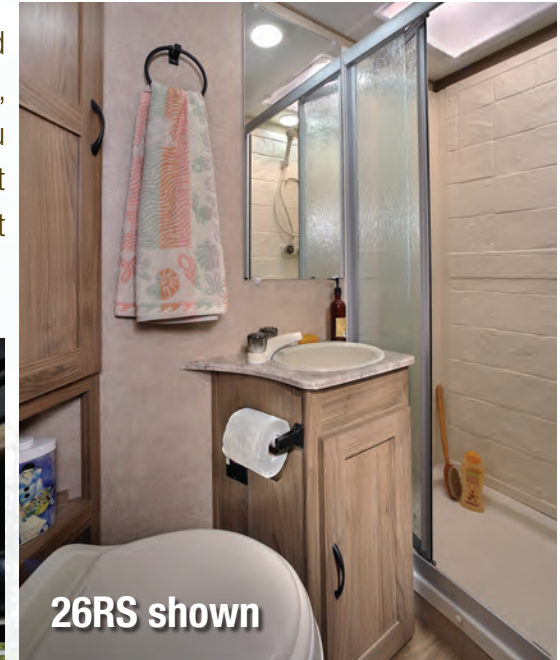
FREELANDER CLASS C MOTORHOMES

The Coachmen Frelander offers you all the "Good Stuff" novice RV'ers quickly appreciate and experienced RV'ers demand. The Frelander mantra is to provide more factory installed features than anyone else, unparalleled value and reliable design and quality at an affordable price. The Frelander will win you over with its right balance of beauty, function, and value in a quality product that you've come to expect in a Coachmen Class C product. For over 50 years, Coachmen has been providing generations a product they can rely on. You'll take pride in ownership of one of the top selling brands in the nation.



21RS shown with Bronzite décor

Large 57" x 95" overhead bunk with bunk ladder • LCD TV and DVD player • Back-up monitor • Seating areas convert into sleeping areas • Large windows • Sturdy pedestal table • Ample seating with safety belts • Thermofoil dinette and countertops • Single child safety tether at forward facing dinette (N/A 21QB)



26RS shown



21RS shown

(top) Privacy glass shower door • Composite bowl sink
(bottom) 60" x 80" residential queen bed with upgraded mattress option • Pleated night shades • TV prep • Even Cool ceiling ducted A/C (most models)

LED lighting throughout • Congoleum® Designer Carefree flooring • Deep single bowl and double bowl sinks with Hi rise faucet • High quality furniture and fabrics • Glass shower door

FREELANDER MICRO INTERIOR FEATURES



- Residential microwave
- Gas range top with power range hood
- 13,500 BTU Roof Air Conditioner
- J-Dinette
- Serta Mattress *(optional)*
- Passenger Swivel Seat *(optional)*



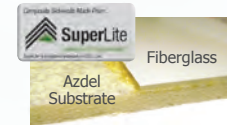
20CB Micro shown with Pewter décor

FREELANDER EXTERIOR FEATURES



Coachmen's Even Cool™ air conditioning system is ducted through the crowned, vacuum-bonded roof. The system uses AMOCO insulated ductwork with radiused corners to provide maximum cooling efficiency. (most models)

TPO roof membrane – lightweight, durable and easy to maintain.



Azdel SuperLite™ sidewall substrate – lightweight, durable and moisture resistant.

2" thick aluminum cage constructed, color-infused, hi-gloss fiberglass sidewalls. (standard)



Slide room awnings (where applicable) to protect your slide room from debris.



Warehouse exterior storage (most models)



Exterior camp table (optional on 21RS, 26RS) w/table, sink and refrigerator (29KS only)

| | |
|----------------------------------|---|
| <p>Fresh Water System</p> | <p>Freelanders 50 Gallons</p> |
| | <p>Other Brands 41 Gallons</p> |

50 gallons of fresh water – on average 20% more than the competition. (most models)



Standard ONAN 4.0kw gas generator gives you 110v power when shoreline power is not available.



Exterior Entertainment Center w/LCD TV/Stereo/DVD and Speakers. (optional)



Solar panel plug-in connection and integrated entry step with 80" entry door and auxiliary battery box.

Solar-ready Connection (standard)



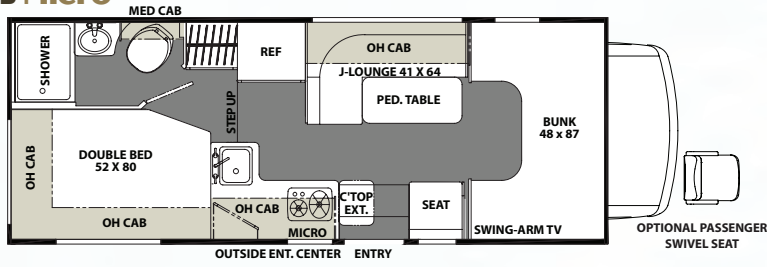
Freelanders' one-touch power awning features adjustable arms for ease of use. (Lead Dog Package)



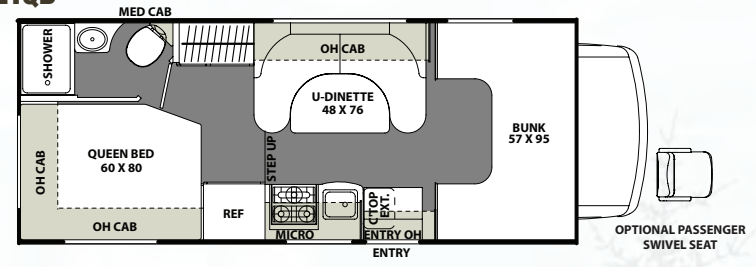
Dash stereo with touch screen control and integrated back-up monitor. (Lead Dog Package)

FREELANDER FLOOR PLANS

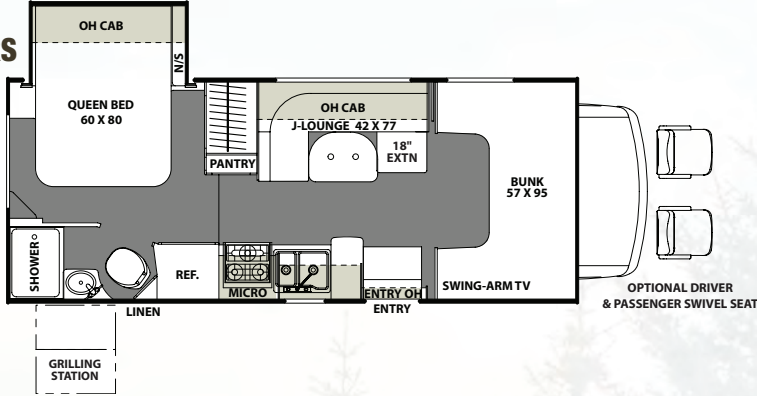
20CB Micro



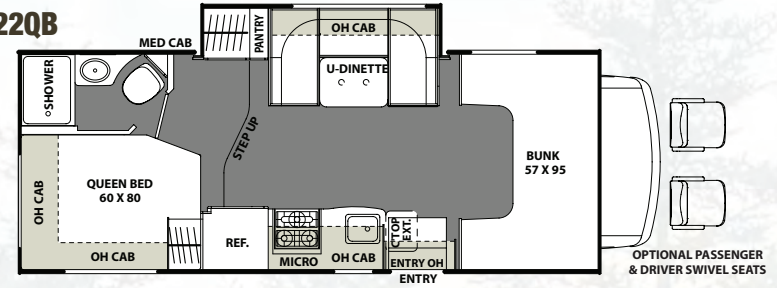
21QB



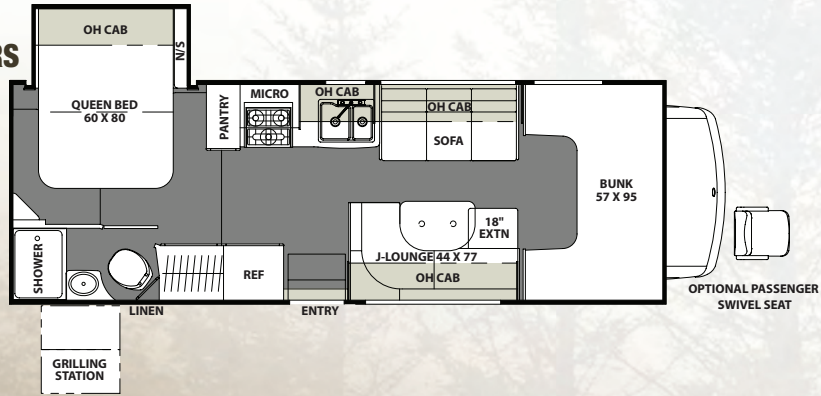
21RS



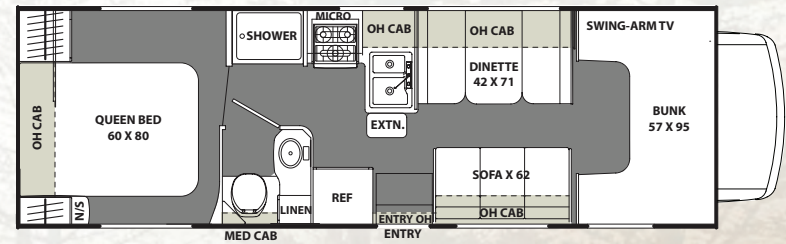
22QB



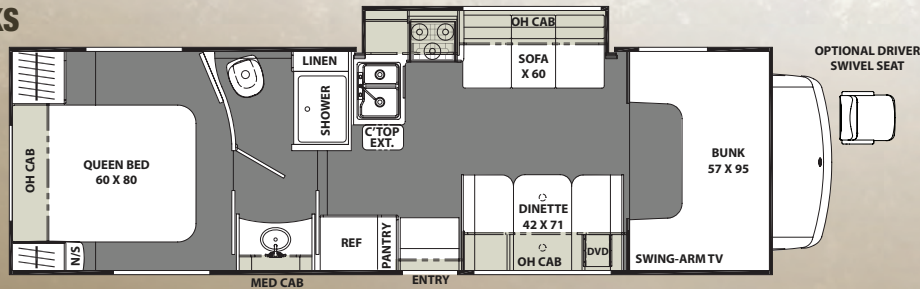
26RS



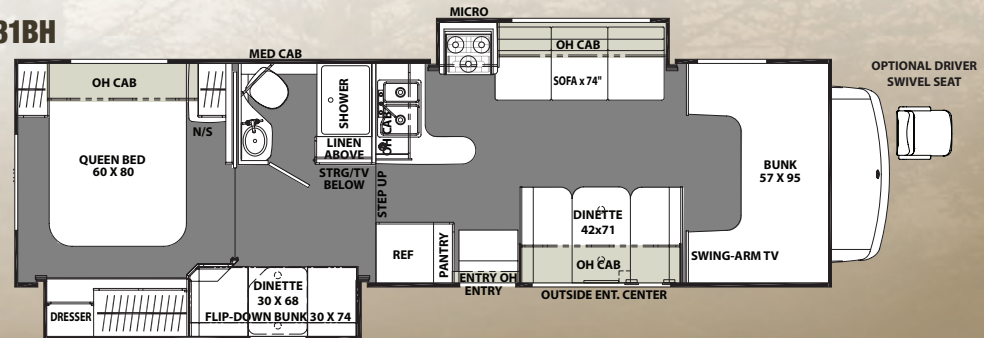
27QB



29KS



31BH



STANDARD

WARRANTY

- Motorhome – 12 Month/ 12,000 mile limited warranty
- Chassis Warranty – See Chassis Owners Manual
- Travel Easy Roadside Assistance – 1 Year

AUTOMOTIVE/EXTERIOR/ CONSTRUCTION

- Deluxe Chassis Package
- Driver & Passenger Air Bags
- Factory Reclining Driver & Passenger Seats
- Cruise Control
- Tilt Steering Wheel
- Dash Air Conditioning
- Power Windows & Locks
- Upgrade Exterior Mirrors
- Vacu-Bond Laminated 2" Steel Floor (N/A 20CB)
- Vacu-Bond Laminated 2" Aluminum Floor (20CB)
- Vacu-Bond Laminated 2" Aluminum Sidewalls
- Vacu-Bond Laminated Crowned Aluminum Roof w/TPO Exterior Surface
- Steel Entry Step Box
- 80" Radius Entrance Door w/Window & Deadbolt Lock
- Drop-down Integrated Entry Step
- Vinyl Graphics Package
- Roto-cast Rear Warehouse Trunk Box w/Plasti-Cote Side Boxes
- Rear Steel Tube Bumper
- Exterior Safety Grab handle
- Upgraded Exterior Range Vent
- Back-up Camera

INTERIOR APPOINTMENTS

- Serenity Ash Woodgrain Cabinetry
- Shaker Style Cabinet Doors & Slab Style Drawer Fronts
- Glass Insert Cabinet Doors (in Select Areas)
- Cabinet Hardware - Black
- Congoleum "Designer Series" Flooring Throughout
- Pleated Night Shades Throughout
- Booth Dinette (27QB, 29KS, 31BH)
- J-Dinette (20CB) w/Additional Pull-out Seat (21RS, 26RS)
- U-Dinette (22QB)
- "Banana" U-shaped Dinette (21QB)
- Single Child Tether at Forward Facing Dinette Seat (N/A 21QB)
- Jackknife Sofa (N/A 20CB, 21QB & 22QB)
- Upgraded "Shaker Style" Bath Door
- Upgraded Slideout Facer Board
- Interior Safety Grab Handle at Entrance Door
- Magazine Rack Above Entrance Door
- Vinyl Padded Up and Angle Pads (20CB, all Fords)

INTERIOR EQUIPMENT

- Bedroom TV Prep
- Jack Wing TV Antenna
- LP Leak Alarm
- Smoke Detector
- Carbon Monoxide Detector
- Fire Extinguisher
- Pre-wired for Satellite Dish through Exterior Coax Input

GALLEY

- Satin Nickel Kitchen Faucet
- Residential Size Microwave Oven
- Flush Mount, Double Door Refrigerator w/Wood Grain Door Inserts
- Single Bowl Kitchen Sink (20CB, 21QB, 22QB)
- Double Bowl Kitchen Sink (N/A 20CB, 21QB, 22QB)
- Power, Lighted Range Hood
- Kitchen Flip-up Countertop Extension (20CB, 21QB, 22QB, 29KS)
- Tile Wall Border

BATH AND WATER

- Molded Plastic Shower Pan & Surround
- Shower Head & Faucet
- Shower Skylight
- Single Bowl Bathroom Sink
- Dual Knob Bathroom Faucet
- Bathroom Vanity Mirror
- Black Towel Ring, Toilet Paper Holder & Robe Hooks
- Foot Flush Toilet
- Atwood 6-Gallon Gas DSI Water Heater
- Power Bath Vent
- Demand Water Pump
- Waste Termination Center Easy Access Door (20CB)

SLEEPING

- Bunk Beds with Dinette/Sleeper Lower Bunk (31BH)
- Residential Queen Bed - 60" x 80" (N/A 20CB)
- Twin Bed - 52" x 80" (20CB)
- Standard Mattress (20CB, 21QB, 22QB, 27QB, 29KS, 31BH)
- Standard Flip-Mattress (21RS, 26RS)
- Standard Bedspread
- Headboard (20CB)
- Cabover Bunk - 57" x 95" (N/A 20CB)
- Cabover Bunk - 48" x 87" (20CB)
- Cabover Bunk Ladder
- Interior Cab Privacy Curtain

ELECTRICAL/HEATING/AC

- Bed Area 110V CPAP Ready Area & 12V/USB Charging Station
- Exterior TV Ready Compartment
- Exterior LED Patio Light
- Systems Command Center
- "Easy Access" Auxiliary Battery in Step-well
- Wall Mounted Thermostat
- GFI Circuits (Kitchen, Bathroom, Exterior)

- Auxiliary Battery Disconnect
- "Even Cool" Roof Air Ducting System (N/A 20CB, 21QB)
- 13,500 BTU Non-Ducted Roof Air Conditioner (20CB, 21QB)
- 13,500 BTU Ducted Roof Air Conditioner (N/A 20CB, 21QB)
- 30K BTU Ducted Furnace (26RS, 27QB, 29KS, 31BH)
- 20K BTU Ducted Furnace (20CB, 21QB, 21RS, 22QB)
- 30 Amp Power Cord
- 55 Amp Electronic Converter

OPTIONAL

STAND ALONE OPTIONS

- 32" LCD TV/DVD - Swing Arm/ Coach (N/A 20CB, 31BH w/Entertainment Package)
- 24" LCD TV/DVD - Swing Arm/ Coach (20CB)
- **Entertainment Package** (31BH) 32" TV/DVD Coach & Bunk Area 24" LCD TV/DVD & Stereo
- Exterior Entertainment Center w/24" LCD TV/DVD, Stereo
- Exterior Camp Table, Sink & Refrigerator (29KS)
- Exterior Camp Table (21RS, 26RS)
- Upgrade Serta Mattress (20CB, 21QB, 22QB, 27QB, 29KS, 31BH)
- Upgrade Folding Mattress (21RS, 26RS)
- Driver Swivel Seat - Ford or Chevy (21RS, 22QB, 29KS, 31BH)
- Passenger Swivel Seat - Ford or Chevy (20CB, 21QB, 21RS, 22QB, 26RS)
- Cockpit Folding Table (N/A 20CB) (Ford Only, Recommended w/Swivel Seat Option)
- Exterior Windshield Cover (Recommended w/Swivel Seat Option)
- 15,000 BTU Low-Profile Ducted Air Conditioner w/Heat Pump (N/A 20CB, 21QB)
- 15,000 BTU Low-Profile Non-Ducted Air Conditioner w/Heat Pump (20CB)
- **Camping Cozy Package** (N/A 31BH Chevy) Dual Pane Tinted Windows (N/A 20CB), Tank Pads, Upper Tank Valves
- Spare Tire (Mandatory 20CB)
- Firestone Ride-Rite Rear Air Bags (Mandatory 31BH, N/A 20CB, 21QB)
- Child Safety Net
- Heated Holding Tanks (Included in Camping Cozy Package)
- Canadian Z240 RV Conversion Compliance (Ford Chassis Only)
- Canadian Chassis Compliance - Speedo & Lights (Ford Chassis Only)
- Canadian CD-MVSA (Mandatory For Canadian Dealers)

FREELANDER LEAD DOG PACKAGE (included with every model N/A 20CB)

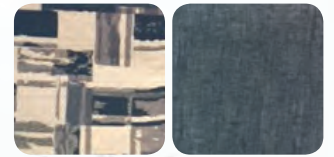
- Hi-gloss Color Infused "Crème" Lamilux 4000 Sidewalls
- Azdel "Super Lite" Composite Sidewall
- Fiberglass Running Boards
- Tinted Radius Slider Windows-Safety Glass
- Atwood 3-Burner Cooktop w/Oven
- Stainless Steel Wheel Liners
- Dash Touch Screen Radio w/Back-Up Monitor
- Power Awning w/Weather Shield
- LED Taillights & Running Lights
- LED Ceiling Lights Throughout
- Exterior Solar Panel Connection ("Furrion" Solar Panel Sold Separate)
- Rear Exterior Roof Ladder
- 50-Gallon Fresh Water Tank (N/A 27QB)
- 40-Gallon Fresh Water Tank (27QB)
- Slideout Awning(s) (N/A 21QB, 27QB)
- 5,000 lb. Towing Hitch w/7-way Plug (Ford E350 & Chevy Chassis)
- 7,500 lb. Towing Hitch w/7-way Plug (Ford E450 Chassis)
- Glass Shower Door
- 4.0KW Onan Gas Generator
- 80" Long Bed
- Roller Bearing Drawer Guides Throughout
- 1-Piece Thermo Foil Countertops

FREELANDER MICRO VALUE PACKAGE (included with every 20CB)

- Hi-gloss Color Infused "Crème" Lamilux 4000 Sidewalls
- Azdel "Super Lite" Composite Sidewall
- Tinted Radius Slider Windows-Safety Glass
- Atwood 2-Burner Cooktop
- Stainless Steel Wheel Liners
- Dash Radio w/Rear View Mirror Back-up Monitor
- Power Awning w/Weather Shield
- LED Taillights & Running Lights
- LED Ceiling Lights Throughout
- Exterior Solar Panel Connection ("Furrion" Solar Panel Sold Separate)
- Rear Exterior Roof Ladder
- 44-Gallon Fresh Water Tank
- 2,000 lb. Towing Hitch w/7-way Plug
- Vinyl Wrap-around Shower Door
- 4.0KW Onan Gas Generator
- 80" Long Bed
- Roller Bearing Drawer Guides Throughout
- American Stonecast Composite Countertops

Standards and Options subject to change without notice.

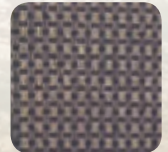
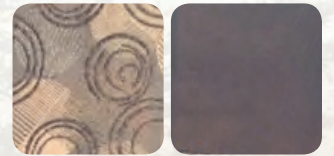
DÉCOR



CARBON



BRONZITE



PEWTER



SERENITY ASH

FREELANDER SPECIFICATIONS

| MODEL | 20CB | 21QB | 21RS | 22QB | 26RS | 27QB | 29KS | 31BH |
|------------------------------|-------------------|-----------------------|-----------------------|-----------------------|-----------------------|-----------------------|-----------------------|-----------------------|
| CHASSIS | FORD T350 TRANSIT | 4500-CHEVY / 350-FORD | 4500-CHEVY / 350-FORD | 4500-CHEVY / 350-FORD | 4500-CHEVY / 350-FORD | 4500-CHEVY / 350-FORD | 4500-CHEVY / 450-FORD | 4500-CHEVY / 450-FORD |
| ENGINE | V6-3.7L | V8-6.0L / V10-6.8L | V8-6.0L / V10-6.8L | V8-6.0L / V10-6.8L | V8-6.0L / V10-6.8L | V8-6.0L / V10-6.8L | V8-6.0L / V10-6.8L | V8-6.0L / V10-6.8L |
| HORSE POWER | 275 | 324 / 305 | 324 / 305 | 324 / 305 | 324 / 305 | 324 / 305 | 324 / 305 | 324 / 305 |
| TORQUE | 260 | 373 / 420 | 373 / 420 | 373 / 420 | 373 / 420 | 373 / 420 | 373 / 420 | 373 / 420 |
| WHEEL BASE | 156" | 159" / 158" | 159" / 158" | 169" / 168" | 191" / 194" | 191" / 190" | 209" / 208" | 224" / 223" |
| GVWR* (LBS.) | 10,360 | 14,200 / 12,500 | 14,200 / 12,500 | 14,200 / 12,500 | 14,200 / 12,500 | 14,200 / 12,500 | 14,200 / 14,500 | 14,200 / 14,500 |
| GCWR* (LBS.) | 12,125 | 20,000 / 18,500 | 20,000 / 18,500 | 20,000 / 18,500 | 20,000 / 18,500 | 20,000 / 18,500 | 20,000 / 22,000 | 20,000 / 22,000 |
| UVW* (APPROX. LBS.) | 8,140 | 9,478 / 9,498 | 10,046 / 10,160 | 10,138 / 10,208 | 10,890 / 10,790 | 10,660 / 10,340 | 11,660 / 11,460 | 12,400 / 12,300 |
| CCC (APPROX. LBS.) | 2,220 | 4,722 / 3,002 | 4,030 / 2,340 | 4,062 / 2,292 | 3,310 / 1,710 | 3,540 / 2,160 | 2,540 / 3,040 | 1,800 / 2,200 |
| GAWR FRONT (LBS.) | 4,130 | 4,600 / 4,600 | 4,600 / 4,600 | 4,600 / 4,600 | 4,600 / 4,600 | 4,600 / 4,600 | 4,600 / 5,000 | 4,600 / 5,000 |
| GAWR REAR (LBS.) | 7,275 | 9,600 / 8,500 | 9,600 / 8,500 | 9,600 / 8,500 | 9,600 / 8,500 | 9,600 / 8,500 | 9,600 / 9,600 | 9,600 / 9,600 |
| INTERIOR HEIGHT | 6' 10" | 6' 11" | 6' 11" | 6' 11" | 6' 11" | 6' 11" | 6' 11" | 6' 11" |
| EXTERIOR WIDTH | 7' 10" | 8' 6" | 8' 6" | 8' 6" | 8' 6" | 8' 6" | 8' 6" | 8' 6" |
| EXTERIOR HEIGHT (W/ A/C) | 10' 6" | 10' 11" | 10' 11" | 10' 11" | 10' 11" | 10' 11" | 10' 11" | 10' 11" |
| EXTERIOR LENGTH (W/ HITCH) | 23' 7" | 24' 5" / 23' 11" | 24' 9" / 24' 3" | 25' 4" / 24' 10" | 27' 11" / 27' 5" | 30' 0" / 29' 6" | 31' 7" / 31' 1" | 33' 5" / 32' 11" |
| HITCH WEIGHT (LBS.) | 2,000 | 5,000 | 5,000 | 5,000 | 5,000 | 5,000 | 5,000 / 7,500 | 5,000 / 7,500 |
| FUEL CAPACITY (GAL.) | 25 | 57 / 55 | 57 / 55 | 57 / 55 | 57 / 55 | 57 / 55 | 57 / 55 | 57 / 55 |
| LP CAPACITY (LBS.) | 40 | 68 | 68 | 68 | 68 | 40 | 68 | 68 |
| FRESH WATER CAPACITY (GAL.) | 38 | 50 | 50 | 50 | 50 | 40 | 50 | 50 |
| WATER HEATER CAPACITY (GAL.) | 6 | 6 | 6 | 6 | 6 | 6 | 6 | 6 |
| GREY TANK CAPACITY (GAL.) | 28 | 25 | 28 | 28 | 31 | 31 | 32 | 34 |
| BLACK TANK CAPACITY (GAL.) | 21 | 22 | 31 | 22 | 31 | 31 | 28 | 29 |
| EXTERIOR STORAGE (CU. FT.) | 60 | 92 | 67 | 92 | 60 | 77 | 107 | 79 |
| AWNING LENGTH (FT.) | 14' | 15' | 15' | 16' | 18' | 20' | 19' | 11' |

GVWR (Gross Vehicle Weight Rating) is the maximum permissible weight of the unit when fully loaded. It includes all weights, inclusive of all fluids, occupants, cargo, optional equipment and accessories. For safety and product performance do NOT exceed the GVWR.

GCWR (Gross Combined Weight Rating) is the maximum permissible loaded weight of your motor home and any towed trailer or towed vehicle. Actual GCWR of this vehicle may be limited by the sum of the GVWR and the installed hitch receiver maximum capacity rating; see hitch rating label for detail.

GAWR (Gross Axle Weight Rating) is the maximum permissible weight, including cargo, fluids, optional equipment and accessories that can be safely supported by each axle.

UVW (Unloaded Vehicle Weight) * is the typical weight of the unit as manufactured at the factory. It includes all weight at the unit's axle(s), including full fuel, all fluids and LP Gas. The UVW does not include cargo, fresh potable water, additional optional equipment or dealer installed accessories.

*Estimated Average based on standard build optional equipment.

CCC (Cargo Carrying Capacity) ** is the amount of weight available for fresh potable water, cargo, passengers, additional optional equipment and accessories. CCC is equal to GVWR minus UVW. Available CCC should accommodate fresh potable water (8.3 lbs per gallon). Before filling the fresh water tank, empty the black and gray tanks to provide for more cargo capacity.

** Estimated average based on standard build optional equipment

Each Coachmen motorhome is weighed at the manufacturing facility prior to shipping. A label identifying the unloaded vehicle weight of the actual unit and the cargo carrying capacity is applied to every Coachmen motorhome prior to leaving our facilities.

The load capacity of your unit is designated by weight, not by volume, so you cannot necessarily use all available space when loading your unit.

Actual towing capacity is dependent upon your particular loading and towing circumstances, which includes the GVWR, GAWR and GCWR as well as adequate trailer brakes. Please refer to the Operator's Manual of your vehicle for further towing information.



Coachmen RV Owner Digital Kit App

Now you can have your Owners Manual with you wherever you are. Download our free App from iTunes and you'll have the information at your fingertips.

Your FREELANDER Dealer



Learn More
Scan this barcode using a QR Reader on your smart phone to learn more about Forest River.



A Berkshire Hathaway company.

All information contained in this brochure is believed to be accurate at the time of publication. However, during the model year, it may be necessary to make revisions and Coachmen reserves the right to make all such changes without notice, including prices, colors, materials, equipment and specifications as well as the addition of new models and the discontinuance of models shown in this brochure. Therefore, please consult with your Coachmen dealer and confirm the existence of any materials, design or specifications that are material to your purchase decision. 2/16

©Copyright 2016 Coachmen RV a Division of Forest River Inc – All Rights Reserved.



Free One Year Membership – Coachmen Owners' Association

Coachmen is proud to sponsor the largest manufacturer sponsored camping club in North America ... Coachmen Owners' Association (COA). COA provides a broad breadth of value propositions for our owners including: planned trips/ tours and rallies at bulk rate discounts, free trip routing, free campground directory, free Easy RVing magazine, theme park discounts, fuel discounts, mail forwarding, a dedicated COA web site, local and state club activities and Caravan Chapter membership opportunities. Most importantly, COA enhances the Coachmen ownership and RV lifestyle experience.

Every new Coachmen RV buyer is eligible for a 1 Year FREE membership in the Coachmen Owners' Association. It all adds up to an easy ownership experience!



Travel Easy™ Roadside Assistance

RVing is easier with Coachmen's Travel Easy™ Roadside Assistance provided FREE the first year of ownership to those who purchase a New Coachmen RV. Administered by Coach-Net, this service provides you with 24/7 operational, technical and emergency road service coverage. Also included is towing, fuel delivery, jump starts, lockout service, tire changes, mobile mechanic and unlimited technical assistance. Anywhere. Anytime. Travel Easy™ is the security of knowing that help is an easy phone call away.



Forest River, Inc. encourages our customers to purchase their Forest River products from a local dealership whenever possible for the following reasons:

- 1) Forest River, Inc. dealers are independently owned and operated businesses so priority service and scheduling is at their discretion and is often provided to customers that purchased their unit at that dealership.
- 2) Purchasing locally allows customers to establish meaningful relationships with a dealer, enhancing the RV experience through assistance with product questions, user tips or RV regulations for your state or country, and much more!
- 3) Canadian customers must meet requirements to bring an RV purchased out of the country to their home. These requirements may involve additional inspections and certifications, taxes and fees. Your local Canadian Dealer is a professional at meeting these requirements.
- 4) Scheduling timely warranty repairs and adjustments through a local dealership provides far greater flexibility and convenience to you, the customer!

It is the goal of Forest River, Inc. that all of our RV owners fully enjoy the RV experience and that customer satisfaction meets or exceeds their expectations!



Coachmen
Leader to the Great Outdoors.

423 N. Main Street • P.O. Box 30
Middlebury, IN 46540

To learn more about Coachmen RV and our products and see how Coachmen is making the easy life easier, call us toll free at **(800) 353-7383**, or visit **www.coachmenrv.com**