

5 SERIES *isata*



The Optional All Season Xplorer Package Tested and developed for over a decade in the Canadian Rockies

Available on 28SS and 30FW only

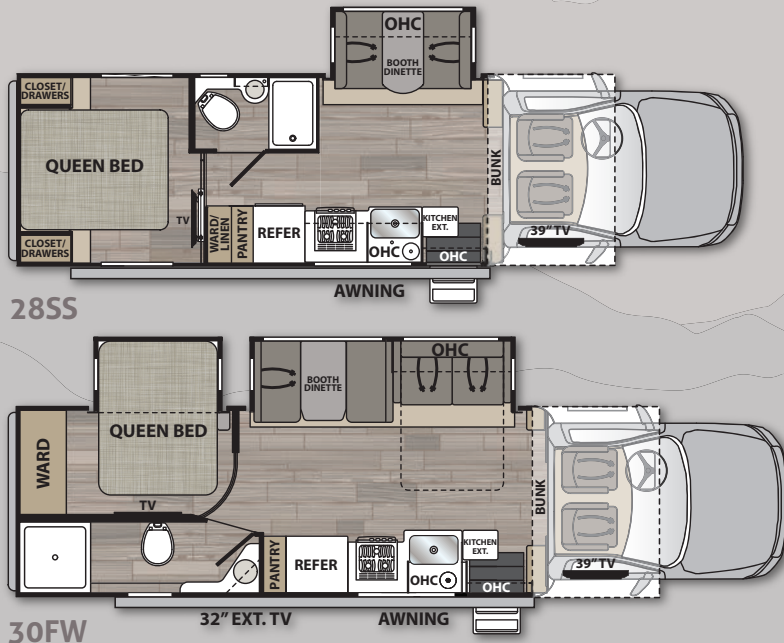


Ram 5500 SLT 4x4 shown with Xplorer Package
Full Body Paint available in "Light" (Left) or "Dark" (Above).

- **Dual Lithium Batteries** – 400 AH with built-in heaters to maximize off-grid efficiency
- **Enhanced Solar Power** – 800 Watts with MPPT controller for up to a 30% better charging rate
- **Dual-Pane Windows** – reduce condensation to help maintain interior temperature
- **Furnace-Heated Utility Bays with Thermal-Foil Insulation** – enhance heat retention
- **Secondary 12V Tank Heater in Utility Bay** – thermostatically-controlled; provides auxiliary/back-up heat
- **Temperature Sensor in Utility Bay** – displays on interior multiplex panel
- **Enhanced Insulation in Walls, Floor, and Roof** – more easily maintains optimal interior temperature
- **Insulated Cab Curtain** – closes off the cab area in colder climates to minimize heat loss

Dimensions:	28SS	30FW
GVWR	19,500 lbs.	19,500 lbs.
GCWR	37,500 lbs.	37,500 lbs.
GAWR – Front	7,250 lbs.	7,250 lbs.
GAWR – Rear	13,500 lbs.	13,500 lbs.
UVW*	16,203 lbs.	16,856 lbs.
Overall Length	31' 2"	33' 3"
Exterior Width	96"	96"
Wheelbase	217"	237.5"
Overall Exterior Height (w/15,000 BTU Roof A/C)	12' 4"	12' 4"
Interior Height	82"	82"
Fuel Capacity	52 Gal.	52 Gal.
Water Capacities (Gal.)		
Fresh/Gray/Black	78/45/45	78/45/45
LPG Capacity (WC)	20.3 Gal./86 lb.	20.3 Gal./86 lb.
Awning Length	16'	16'

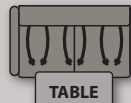
*UVW is an estimate only based on standard equipment.



28SS

30FW

OPTIONS



Tri-fold Sofa with Table IPO Dinette (28SS only)



Theater Seating IPO Dinette (30FW)

GVWR (Gross Vehicle Weight Rating) - is the maximum permissible weight of the unit when fully loaded. It includes all weights, inclusive of all fluids, occupants, cargo, optional equipment and accessories. For safety and product performance do NOT exceed the GVWR.

GCWR (Gross Combined Weight Rating) - is the maximum permissible loaded weight of your motorhome and any towed trailer or towed vehicle. Actual GCWR of this vehicle may be limited by the sum of the GVWR and the installed hitch receiver maximum capacity rating; see hitch rating label for detail.

GAWR (Gross Axle Weight Rating) - is the maximum permissible weight, including cargo, fluids, optional equipment and accessories that can be safely supported by each axle.

UVW (Unloaded Vehicle Weight)* - is the typical weight of the unit as manufactured at the factory. It includes all weight at the unit's axle(s), including full fuel, all fluids and LP Gas. The UVW does not include cargo, fresh potable water, additional optional equipment or dealer installed accessories.

*Estimated Average based on standard build optional equipment.

CCC (Cargo Carrying Capacity)** - is the amount of weight available for fresh potable water, cargo, passengers, additional optional equipment and accessories. CCC is equal to GVWR minus UVW. Available CCC should accommodate fresh potable water (8.3 lbs per gallon). Before filling the fresh water tank, empty the black and gray tanks to provide for more cargo capacity.

**Estimated average based on standard build optional equipment.

Each Forest River RV is weighed at the manufacturing facility prior to shipping. A label identifying the unloaded vehicle weight of the actual unit and the cargo carrying capacity is applied to every Forest River RV prior to leaving our facilities.

The load capacity of your unit is designated by weight, not by volume, so you cannot necessarily use all available space when loading your unit.

Actual towing capacity is dependent upon your particular loading and towing circumstances, which includes the GVWR, GAWR and GCWR as well as adequate trailer brakes. Please refer to the Operator's Manual of your vehicle for further towing information.



2745 Northland Dr. ■ Elkhart IN 46514
888-295-7859 ■ www.dynamaxcorp.com



Factory Video Tour

<https://www.youtube.com/watch?v=q5cG43PD7SE>

Paint Video

<https://www.youtube.com/watch?v=sLgLoR26jfs>

All information contained in this brochure is believed to be accurate at the time of publication. However, during the model year, it may be necessary to make revisions and Forest River, Inc., reserves the right to make all such changes without notice, including prices, colors, materials, equipment and specifications as well as the addition of new models and the discontinuance of models shown in this brochure. Therefore, please consult with your Forest River dealer and confirm the existence of any materials, design or specifications that are material to your purchase decision. ©2020 Dynamax, a Division of Forest River, Inc., a Berkshire Hathaway company. All Rights Reserved. 1/22



Find us on Facebook



www.ForestRiverBuyLocal.com

