



Dutchmen

DENALI



AFFORDABLE LUXURY



DENALI

AFFORDABLE LUXURY



EXPANDED STORAGE

Now you can take it all with Denali's easy-to-load, pass-through basement storage and under-bed storage.



UNDER-BED STORAGE



PASS-THROUGH BASEMENT STORAGE



DENALI 307RLS | COBBLESTONE

COUNTERTOP

Solid surface countertops with wood cutting board and sink covers durable enough for anything you want to cook up.

REFRIGERATOR

Bring food for a party of any size in the Denali's eight cubic foot refrigerator with raised panel hardwood front.

ENTERTAINMENT

Crank up the volume with the four speaker Zone Switch Media Center! Includes AM/FM/CD/DVD/MP3 Bluetooth stereo with USB and auxiliary plug-ins.



RESIDENTIAL UPGRADES

With a focus on luxury, style and craftsmanship, Denali delivers ...

- ◆ Raised panel hardwood cabinet doors and drawers
- ◆ Full height pantry with full access cabinets and ball bearing drawer guides
- ◆ Mosaic tile backsplash in kitchen
- ◆ Oven with a three burner cooktop and Piezo Igniter
- ◆ Residential microwave with turntable
- ◆ Large pots and pans drawers in galley
- ◆ LED lighting
- ◆ Pleated night shades
- ◆ Premium flooring
- ◆ Residential carpet
- ◆ Tinted safety glass windows
- ◆ Porcelain foot flush toilet
- ◆ Undermount galley sink with cover



DENALI

WIDE OPEN SPACES



DENALI 307RLS | COBBLESTONE



DENALI 307RLS | COBBLESTONE



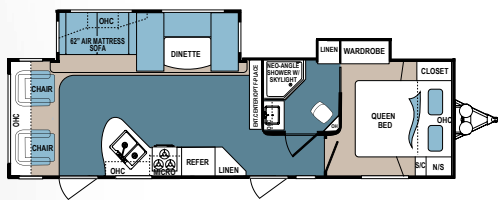
DENALI 289RK | GREY STONE

UNWIND & RELAX

With a flush floor master bedroom, Denali adds more comfort to your space than ever before, With an extra 5 inches of height in your Fifth Wheel bedroom.

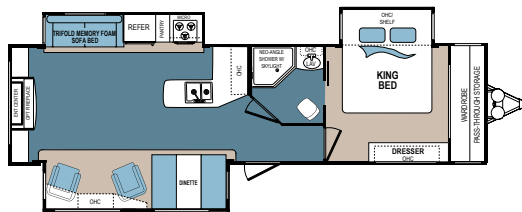


DENALI 307RLS | COBBLESTONE



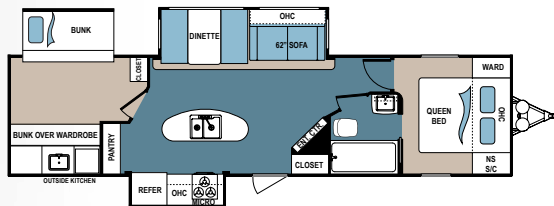
DENALI TRAVEL TRAILER | 266RL

Ext. Length: 34' 6" Ext. Height: 11' 1" Average Shipping Weight: 7,613 Sleeps: 3-4



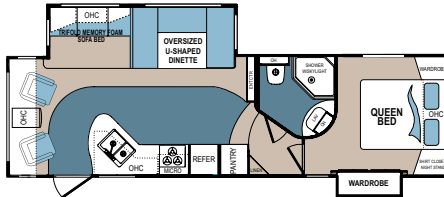
DENALI TRAVEL TRAILER | 287RE

Ext. Length: 36' 9" Ext. Height: 11' 4" Average Shipping Weight: 8,287 Sleeps: 3-4



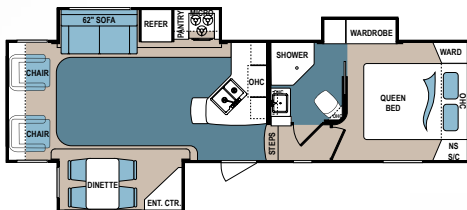
DENALI TRAVEL TRAILER | 371BH

Ext. Length: 38' Ext. Height: 11' 3" Average Shipping Weight: 8,540 Sleeps: 4-6



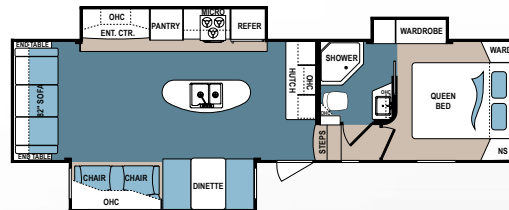
DENALI FIFTH WHEEL | 262RLX

Ext. Length: 31' 5" Ext. Height: 12' Average Shipping Weight: 8,163 Sleeps: 3-5



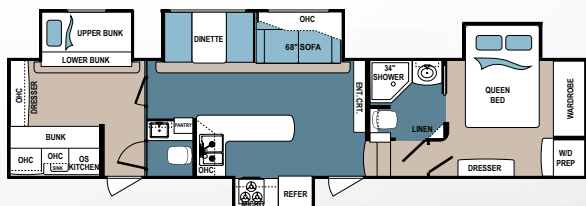
DENALI FIFTH WHEEL | 297RLX

Ext. Length: 32' 9" Ext. Height: 12' Average Shipping Weight: 8,780 Sleeps: 2-3



DENALI FIFTH WHEEL | 307RLS

Ext. Length: 35' 4" Ext. Height: 12' 2" Average Shipping Weight: 9,547 Sleeps: 2-4



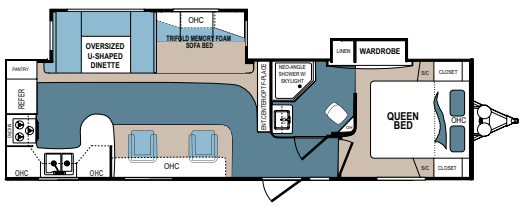
DENALI FIFTH WHEEL | 365BHS

Ext. Length: TBD Ext. Height: TBD Average Shipping Weight: TBD Sleeps: TBD

DENALI SPECIFICATIONS

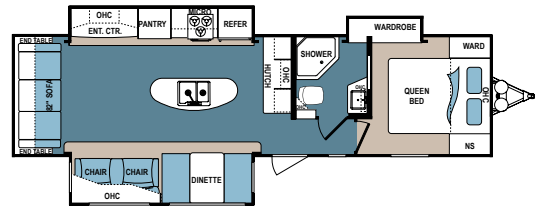
		DIMENSIONS			WEIGHTS (LBS.)			TANKS (GALS.)		
MODEL	FLOORPLAN	*EXTERIOR TRAVEL LENGTH	EXTERIOR WIDTH	EXTERIOR HEIGHT (WITH A/C)	**AVERAGE SHIPPING WEIGHT	DRY HITCH WEIGHT	CARGO CARRYING CAPACITY	***FRESH WATER CAPACITY	GREY WATER CAPACITY	BLACK WATER CAPACITY
Travel Trailer	266RL	34' 6"	96"	11' 1"	7,613	938	2,067	56	84	42
	287RE	36' 9"	96"	11' 4"	8,287	925	2,889	56	48	48
	289RK	34' 8"	96"	11' 2"	7,696	966	1,984	56	84	42
	325RL	35' 11"	96"	11' 7"	8,600	980	2,576	56	76	48
	371BH	38'	96"	11' 3"	8,540	846	2,636	67	96	48
Fifth Wheel	262RLX	31' 5"	96"	12'	8,163	1,677	2,397	56	75	42
	280LBS	33' 10"	96"	12' 5"	8,815	1,744	1,745	56	90	48
	293RKS	37' 11"	96"	11' 11"	10,192	2,046	2,000	67	48	48
	297RLX	32' 9"	96"	12'	8,780	1,843	1,780	67	48	48
	307RLS	35' 4"	96"	12' 2"	9,547	2,013	2,645	56	96	48
	316RES	39' 3"	96"	12' 3"	10,408	2,082	1,784	67	96	48
	319RLS	35' 6"	96"	12' 1"	9,596	1,934	2,596	67	96	48
	365BHS	TBD	TBD	TBD	TBD	TBD	TBD	TBD	TBD	TBD

*Length is defined as the distance from the centerline of hitch pin/coupler to rear bumper of trailer. **Our weights represent how most units are built, inclusive of many commonly-ordered options. ***Fresh water capacity includes water heater capacity.



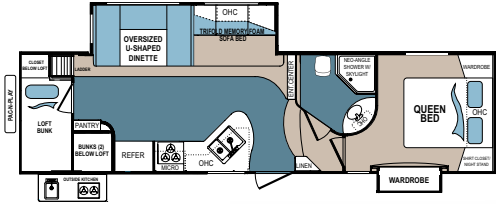
DENALI TRAVEL TRAILER | 289RK

Ext. Length: 34' 8" Ext. Height: 11' 2" Average Shipping Weight: 7,696 Sleeps: 3-4



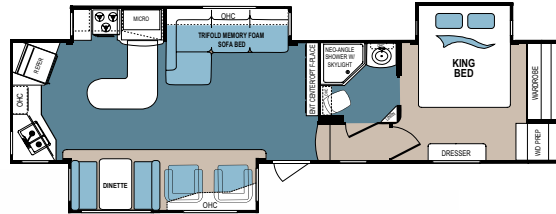
DENALI TRAVEL TRAILER | 325RL

Ext. Length: 35' 11" Ext. Height: 11' 7" Average Shipping Weight: 8,600 Sleeps: 3-4



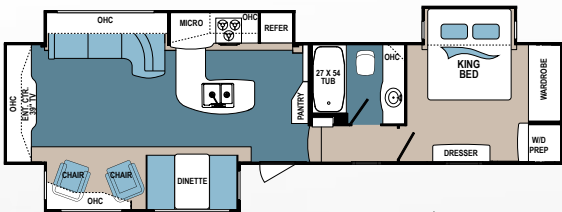
DENALI FIFTH WHEEL | 280LBS

Ext. Length: 33' 10" Ext. Height: 12' 5" Average Shipping Weight: 8,815 Sleeps: 3-5



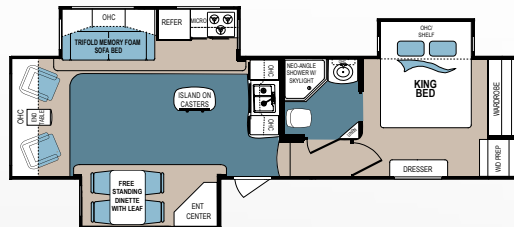
DENALI FIFTH WHEEL | 293RKS

Ext. Length: 37' 11" Ext. Height: 11' 11" Average Shipping Weight: 10,192 Sleeps: 2-4



DENALI FIFTH WHEEL | 316RES

Ext. Length: 39' 3" Ext. Height: 12' 3" Average Shipping Weight: 10,408 Sleeps: 3-4



DENALI FIFTH WHEEL | 319RLS

Ext. Length: 35' 6" Ext. Height: 12' 1" Average Shipping Weight: 9,596 Sleeps: 2-3

DENALI STANDARDS AND OPTIONS

DENALI SUMMIT PACKAGE

- 13,500 BTU Ducted Air Conditioner
- 15' Sprayer Hose w/Quick Connect
- 30,000 to 34,000 BTU Forced Air Furnace
- 4 Interior Speakers w/Zone Switch
- Aluminum Wheels
- Ball Bearing Drawer Guides - All Drawers
- Barrel Ceiling w/Denali Maple Trim (Travel Trailer Only)
- Brushed Nickel Hardware and Fixtures
- Command Center w/All Switches & Monitors in One Location
- Dinettes w/Pull Out Drawers
- Expanded Turning Radius Front Cap
- Eye Sight Hitch Vision w/LED Lights in the Cap (Fifth Wheel Models)
- EZ Lube Axles
- Full Height Pantry, Full Access Cabinets
- Hardwood Slide-out Fascia w/Antique Finish
- Heated and Enclosed Underbelly
- High Neck Kitchen Faucet with Sprayer
- Large Pots and Pans Drawers in Galley

- LED TV in Living Area
- LP Quick Connection
- Media Center: Bluetooth Stereo with USB and Aux
- Mosaic Tile Backsplash in Kitchen
- Oven w/Three Burner Cooktop and Piezo Igniter
- Oyster Fiberglass
- Pleated Night Shades
- Porcelain Foot Flush Toilet
- Premium Flooring
- Pushback Style Recliners (FP Specific)
- Quick Connect Power Cord
- Radial Tires
- Raised Panel Hardwood Cabinet Doors & Drawers
- RCA Cable from Stereo to TV
- Residential Carpet
- Residential Microwave w/Turntable
- Roof Ladder
- Satellite and Cable Prep
- Serving Tray Sink Cover
- Skylight Over Tub/Shower
- Solid Surface Countertop
- Spare Tire w/Carrier and Cover

- Tinted Safety Glass Windows
- TV Cable and Electrical Hookups Under Awning
- Under-Mount Galley Sink w/Cover
- Utility Management Center (Fifth Wheels)
- Wineguard TV Antenna with Booster

PREMIUM PACKAGE

- Power Awning with LED Lighting
- Raised Panel Hardwood Refer Front
- Slam Latch Baggage Doors

LUXURY PACKAGE

- 8 Cubic Foot Refrigerator
- 10 Gallon DSI Water Heater
- Barrel Ceiling (Travel Trailer Only)
- Friction Hinge Main
- Painted Gel Coat Front Cap w/LED Lighting

MANDATORY OPTIONS

- 50 AMP Service w/Prep for 2nd A/C
- Black Tank Flush
- Denali Summit Package
- Destination Tri-Fold Sofa IPO Std. Sofa

EquaFlex Upgraded Suspension

- Luxury Package
- NitroFill - Nitrogen Filled Tires
- Outside Speakers
- Premium Package
- Thermal Package

OPTIONAL EQUIPMENT

- 13,500 BTU Bedroom Air Conditioner
- 15,000 BTU Living Area AC-IPO 13,500 BTU
- 2 - Residential Recliner Upgrade
- Bike Rack w/Spare Tire
- Central Vacuum System
- CSA Construction and Seal
- Dual Pane Windows (Frameless)
- Electric Four-Point Leveling System (FW Only)
- Electric Front/Rear Stab Jacks
- Fireplace
- Free Standing Dinette Table and Four Chairs
- Power Tongue Jack
- Upgraded Mattress
- Wireless Backup Camera

DISCLAIMER: Product information is as accurate as possible as of the date of publication of this brochure. All features, floor plans, and specifications in this brochure are subject to change without notice. Please also consult Dutchmen's website at www.Dutchmen.com for more current product information and specifications. Tow Vehicle Disclaimer. **CAUTION:** Owners of Dutchmen recreational vehicles are solely responsible for the selection and proper use of tow vehicles. All customers should consult with a motor vehicle manufacturer or their dealer concerning the purchase and use of suitable tow vehicles for Dutchmen products. Dutchmen disclaims any liability or damages suffered as a result of the selection, operation, use or misuse of a tow vehicle. DUTCHMEN'S LIMITED WARRANTY DOES NOT COVER DAMAGE TO THE RECREATIONAL VEHICLE OR THE TOW VEHICLE AS A RESULT OF THE SELECTION, OPERATION, USE OR MISUSE OF THE TOW VEHICLE. REFERENCE DUTCHMEN MANUFACTURING OWNERS MANUAL FOR LIMITED WARRANTY DETAILS.



DENALI LITE

WIDE OPEN SPACES



Travel Trailer and Fifth Wheel Lite options available



DENALI LITE 2611BH | CANYON



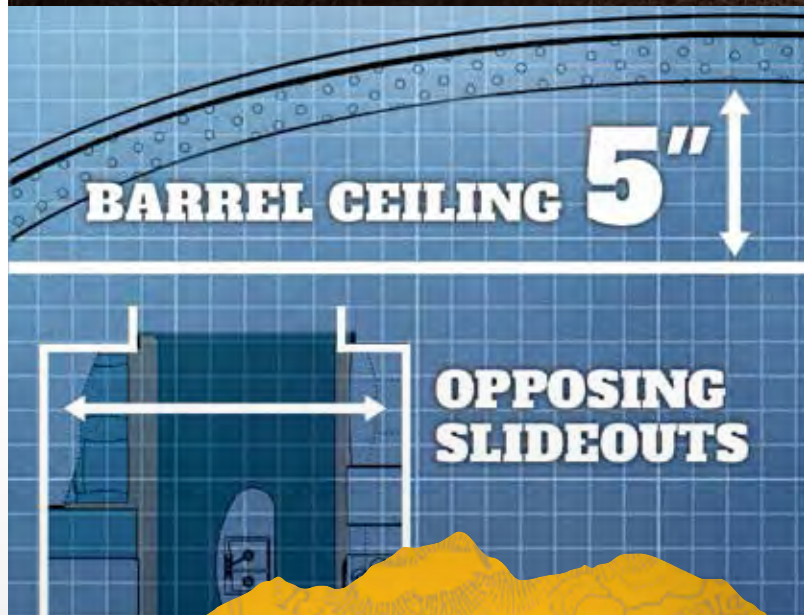
DENALI LITE 2611BH | CANYON



DENALI LITE 2611BH | CANYON

LUXURY IS IN THE DETAILS

Denali's 5" barrel ceiling and opposing slide-outs offer a sizable interior height and width. These wide open spaces will brighten your living space, increase your comfort, and make you wish your trip would never end.



MORE STYLE & FEATURES

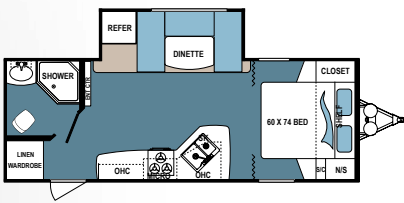
The Denali kitchen is a rival to any home kitchen! Create delicious meals in the oven or on the three-burner cooktop. Prepare snacks in the full-sized microwave, and enjoy easy clean-up with your mosaic tile backsplash, high-rise faucet, sprayer and galley sink.



HIGH-RISE KITCHEN FAUCET WITH SPRAYER

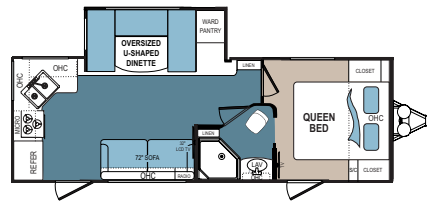


THREE-BURNER COOKTOP WITH PIEZO IGNITER



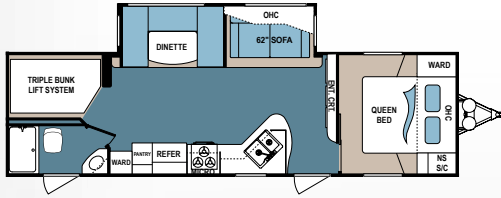
DENALI LITE | 2371RB

Ext. Length: 27' 6" Ext. Height: 11' Average Shipping Weight: 5,677 Sleeps: 2-3



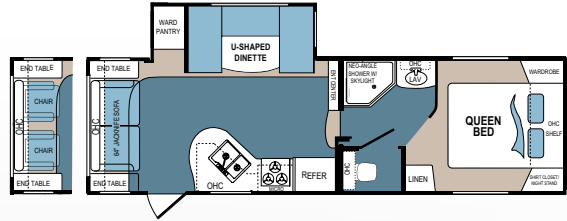
DENALI LITE | 2461RK

Ext. Length: 28' 11" Ext. Height: 11' 2" Average Shipping Weight: 6,225 Sleeps: 3-4



DENALI LITE | 2611BH

Ext. Length: 33' 10" Ext. Height: 10' 11" Average Shipping Weight: 7,078 Sleeps: 5-7



DENALI LITE FIFTH WHEEL | 2445RL

Ext. Length: 28' 6" Ext. Height: 11' 10" Average Shipping Weight: 6,921 Sleeps: 2-4

DENALI LITE STANDARDS AND OPTIONS

MANDATORY OPTIONS

- ____ All Weather Thermal Package
- ____ Black Tank Flush
- ____ Denali Lite Value Package
- ____ NitroFill - Nitrogen Filled Tires
- ____ Outside Speakers
- ____ Painted Gel Coat Front Cap w/LED Lighting
- ____ Rear Roof Ladder
- ____ 15" Aluminum Wheels
- ____ 15" Spare Tire w/Carrier

OPTIONAL EQUIPMENT

- ____ Bike Rack w/Spare Tire
- ____ Frameless Dual Pane Windows
- ____ Free Standing Dinette Table and Four Chairs
- ____ Living Room TV
- ____ Residential Pushback Recliners (2445RL Only)

- ____ State Seal (where applicable)
- ____ Travel Trailer Power Tongue Jack
- ____ Wireless Backup Camera
- ____ 15,000 BTU Living Area AC-IPO 13,500 BTU

ALL WEATHER THERMAL PACKAGE

- ____ 13,500 BTU Ducted Air Conditioner
- ____ 30,000 BTU Forced Air Furnace
- ____ Enclosed Underbelly w/Heated Holding Tanks

DENALI LITE VALUE PACKAGE

- ____ 4 Interior Speakers w/Zone Switch
- ____ 6 Gal. Gas/Electric/DSI Water Heater w/Bypass
- ____ 8 Cubic Foot Double Door Refrigerator
- ____ 15' Pressure Sprayer
- ____ Ball Bearing Drawer Guides - All Drawers
- ____ Barrel Ceiling w/Denali Maple Trim (TT Only)

- ____ Brushed Nickel Hardware and Fixtures
- ____ Command Center
- ____ Destination Tri-Fold Sofa (N/A 2371 & 2445)
- ____ Expanded Turning Radius
- ____ Front Cap (5th Wheels)
- ____ Eye Sight Hitch Vision w/LED Lights in the Cap
- ____ EZ Lube Axles
- ____ Hardwood Slide-out Fascia
- ____ High Rise Kitchen Faucet at Residential
- ____ Galley Sink
- ____ Manual Stabilizer Jacks (Front & Rear TT) (Rear FW)
- ____ Media Center - AM/FM/CD/DVD/MP3 w/Bluetooth
- ____ Oven w/Three Burner Cook Top and Piezo Igniter
- ____ Pleated Night Shades

- ____ Porcelain Foot Flush Toilet
- ____ Power Awning
- ____ Power Front Landing Gear (FWs Only)
- ____ Premium Flooring
- ____ Radial Tires
- ____ RCA Cable from Stereo to TV Location
- ____ Residential Carpet
- ____ Residential Microwave w/Turntable
- ____ Satellite and Cable Prep
- ____ Serving Tray Sink Cover
- ____ Skylight Over Tub/Shower
- ____ Slam Latch Compartment Doors
- ____ Tinted Safety Glass Windows
- ____ TV Cable and Electrical Hookups
- ____ Under Awning
- ____ U-Dinettes w/Pull Out Drawers
- ____ Wineguard TV Antenna with Booster

DENALI SPECIFICATIONS

DIMENSIONS		WEIGHTS (LBS.)			TANKS (GALS.)					
MODEL	FLOORPLAN	*EXTERIOR TRAVEL LENGTH	EXTERIOR WIDTH	EXTERIOR HEIGHT (WITH A/C)	**AVERAGE SHIPPING WEIGHT	DRY HITCH WEIGHT	CARGO CARRYING CAPACITY	***FRESH WATER CAPACITY	GREY WATER CAPACITY	BLACK WATER CAPACITY
Travel Trailers	2371RB	27' 6"	96"	11'	5,677	662	3,163	52	42	42
	2461RK	28' 11"	96"	11' 2"	6,225	808	3,455	52	84	42
	2611BH	33' 10"	96"	10' 11"	7,078	916	2,602	63	42	42
Fifth Wheel	2445RL	28' 6"	96"	11' 10"	6,921	1,339	3,639	52	84	42

*Length is defined as the distance from the centerline of hitch pin/coupler to rear bumper of trailer. **Our weights represent how most units are built, inclusive of many commonly-ordered options. ***Fresh water capacity includes water heater capacity.

DISCLAIMER: Product information is as accurate as possible as of the date of publication of this brochure. All features, floor plans, and specifications in this brochure are subject to change without notice. Please also consult Dutchmen's website at www.Dutchmen.com for more current product information and specifications. Tow Vehicle Disclaimer. **CAUTION:** Owners of Dutchmen recreational vehicles are solely responsible for the selection and proper use of tow vehicles. All customers should consult with a motor vehicle manufacturer or their dealer concerning the purchase and use of suitable tow vehicles for Dutchmen products. Dutchmen disclaims any liability or damages suffered as a result of the selection, operation, use or misuse of a tow vehicle. DUTCHMEN'S LIMITED WARRANTY DOES NOT COVER DAMAGE TO THE RECREATIONAL VEHICLE OR THE TOW VEHICLE AS A RESULT OF THE SELECTION, OPERATION, USE OR MISUSE OF THE TOW VEHICLE. REFERENCE DUTCHMEN MANUFACTURING OWNERS MANUAL FOR LIMITED WARRANTY DETAILS.

PREMIUM FEATURES THAT WORK FOR YOU!



HOLDING TANKS

heated and enclosed

Denali's heated, enclosed tanks and enclosed tank gate valves reduce the chance of freezing and keep things flowing smoothly while you're on the road.

THERMAL INSULATION

four types of insulation

Live comfortably in practically any weather. Your Denali's Thermal Insulation Package is stocked with four types of insulation that make heating and cooling a breeze: 1) fiberglass batten, 2) block foam, 3) expandable foam and 4) Flex-Foil blanket insulations.

AERODYNAMIC FRONT CAPS

with LED lighting

Our painted fiberglass and clear coat front caps, are less likely to fade or oxidize over time than competitors, giving your Denali a high-end look for years to come.

ELECTRIC AWNING

with LED light strip

Denali always gives you more. Unlike other manufacturers, our easy-to-use electric awning with LED light strip comes standard in all Denali units. It provides a cool and comfortable shade, doubles as a windbreaker and adds more light to evenings spent outside your RV.

DENALI DÉCOR

COBBLESTONE



Main Fabric

Accent

Wood

WOODLAND



Main Fabric

Accent

Wood

CANYON



Main Fabric

Accent

Wood

GREYSTONE



Main Fabric

Accent

Wood

AFFORDABLE LUXURY



Dutchmen—A North American Campground Classic

Few manufacturers have built RVs for 25+ years, and only one has set the standard for innovation AND value. Dutchmen **IS** “A North American Campground Classic.”



MORE STANDARD FEATURES MORE VALUE

Dutchmen RVs turn more heads on the lot and in the campground than any other. Why? While other manufacturers offer features as options, Dutchmen tends to make those same features standard. Call it “bang for the buck”, “more for your money”, or simply “more value.”

We've built a reputation for bringing RV owners more standard features for less money over the years... and it's a reputation we plan to keep.

300

STRONG

NATION WIDE DEALER NETWORK

300 Dutchmen dealers across North America and the Industry Leading Service Center in Goshen, Indiana, combine for your peace of mind before, during, and after the sale. Rest assured that no matter where your travels take you, **the best-resourced RV manufacturing company in the world is behind you all the way.**

Scan this QR Code for a
360 view
of the Denali interior.



www.dutchmen.com

Visit us online to see all of the Dutchmen brands, innovative models and spacious floor plans.

From giving advice to servicing products, we consider our loyal dealers the best resource for learning about Dutchmen products.

Your local dealer

