

2011 INSIGNIA

ENTEGR A COACH Without compromise.



ENTEGR A
COACH®

Enjoy the ride.



INSIGNIA

THE
Bontrager
FAMILY PROMISE

After 40 years of building Jayco, the world's largest privately-owned RV manufacturer, our family is proud to stand behind every Entegra Coach we build with the Bontrager Family Promise. It's a promise to provide unfailing customer service—before, during and after the sale. To learn more, visit us online or see your local Entegra Coach dealership.

Derald L. Bontrager *Wilbur L. Bontrager*

DERALD & WILBUR BONTRAGER
Entegra Coach Founders



2011 ENTEGRA COACH

Everyday Extraordinary.

THE 2011 *INSIGNIA* is our newest masterpiece. Power and luxury seamlessly converge, making it stand out as a symbol of superior design.

Meticulously crafted, the Insignia redefines luxury with its hand-laid porcelain travertine floors, hardwood cabinetry and rich, sumptuous leather furniture.

Built on a Freightliner chassis and powered by a 360 HP Cummins turbocharged engine, Insignia is an undeniable marvel on the road. Distinct, perfect, it's extraordinary in every possible way.

INSIGNIA®

A 32" LCD HDTV, leather furniture, custom laid porcelain travertine floor, solid hardwood doors and Washington Glazed Maple hardwood cabinetry provide an unrivaled level of luxury.

LIVING AREA





PEACEFUL

An inviting pillowtop mattress, plush quilted bedspread, matching pillow shams and charming headboard combine to create an oh-so opulent retreat.



REFRESHING

Revitalizing details, like stylish satin nickel hardware, a one-piece walk-in shower, vessel sinks and porcelain tile floor make for an invigorating space.



MODERN

You'll feel right at home with an optional 12 cu. ft. Norcold refrigerator with ice maker.



Savor Insignia's many culinary treats. From Amish handcrafted solid hardwood cabinetry to an Amana microwave and recessed range, from a 10 cu. ft. Norcold refrigerator to its plentiful storage space, Insignia is a kitchen splendor you'll be eager to command.

TASTEFUL ELEGANCE



A



B



C

LUXURY AND FUNCTION

(A) A 16" x 16" tile custom-laid floor, (B) 26" LCD HDTV home theatre system in the bedroom and (C) handcrafted hardwood cabinetry throughout the interior sets Insignia apart from other Class A motor coaches.



RIGID INGENUITY

Seamlessly engineered, flawlessly designed, Entegra Coach's exclusive X-Bridge chassis helps prevent flexing throughout, averting cracks in tile and grout and reducing windshield movement. Unyielding, the X-Bridge delivers a smoother ride.



ENTERTAINING

Become absorbed. With an optional exterior entertainment system, Insignia will captivate you with its 32" LCD HDTV, CD/DVD player/radio and outdoor speakers.

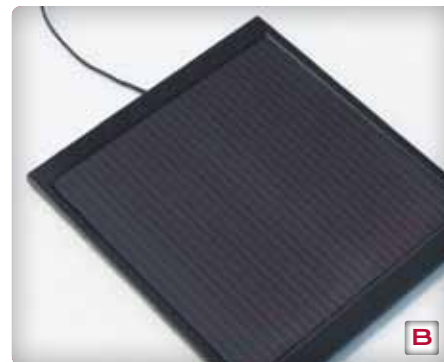


DRIVING PLEASURE

Six-way power driver and passenger seats with integrated seat belts, a passenger seat powered footrest, Freightliner message center, VIP SmartWheel steering wheel control system, back-up and side-view cameras and Ultra-Vision one-piece wrap-around windshield make Insignia a triumph to drive.



A



B



C

ENGINEERING AND STYLE

(A) A steel reinforced front cap and windshield frame provide extra strength, delivering added protection when driving. (B) Insignia's five-watt solar panel keeps your chassis batteries charged. (C) The sleek design of the flush-mount slideout is only a small reflection of Insignia's seamless, well-assembled construction.

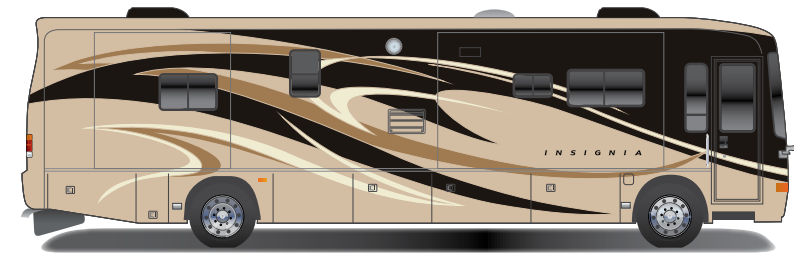
Construction

Insignia is built to last with Aluma-Tru Superstructure construction on 16" centers, an engineered and reinforced V-Flex rear chassis support, fiberglass insulation and flush-mount slideout rooms.

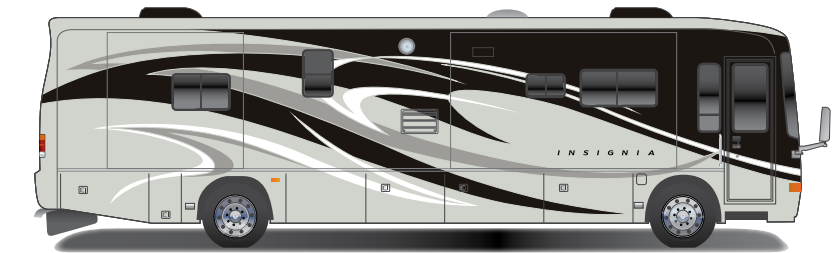


- | | | |
|---|---|--|
| 1. Ultra-Vision one-piece wrap-around windshield | 10. 16" x 16" porcelain tile | 19. Fiberglass insulation (R-19) |
| 2. X-Bridge frames engineered into chassis | 11. Steel tubular floor joists | 20. 3/8" plywood roof decking |
| 3. Aluma-Tru Superstructure construction on 16" centers | 12. Wood truss floor risers | 21. Fiberglass roof |
| 4. Deluxe full-body paint package | 13. Floor and underbelly fiberglass insulation (R-14) | 22. Dual 13,500-BTU low-profile roof A/C's and drain tubes |
| 5. Extra large basement storage | 14. 5/8" plywood floor decking | 23. Vinyl padded ceiling |
| 6. Side-hinged baggage doors | 15. Sidewall insulation (R-10) | 24. Entry door with Sur-Seal air lock |
| 7. Slideout cargo tray (optional) | 16. Smooth gel-coat fiberglass exterior | 25. Daytime running lights |
| 8. Flush-mount, electric-powered slideout rooms | 17. Front-molded fiberglass cap | 26. Outside generator slideout tray |
| 9. Rear-molded fiberglass cap with high-mounted integrated air intake | 18. Welded crowned aluminum truss rafters 16" on center | |

EXTERIOR GRAPHIC OPTIONS



DAKOTA SANDSTONE



IRON SLATE

FABRIC OPTIONS



CORDOVAN



IVORY



BURNT WALNUT



CRÈME BRÛLÉE

WOOD



MOCHA GLAZED MAPLE



WASHINGTON GLAZED MAPLE



STRENGTH

A structure's foundation should never be compromised, which is why Insignia is built on a Freightliner XCR Series chassis and Entegra Coach's exclusive X-Bridge frame. Ingeniously crafted with strength in mind, Insignia's fully integrated design provides superior support and stabilization, plus easy steering and smooth braking for a quiet, comfortable ride.



POWER

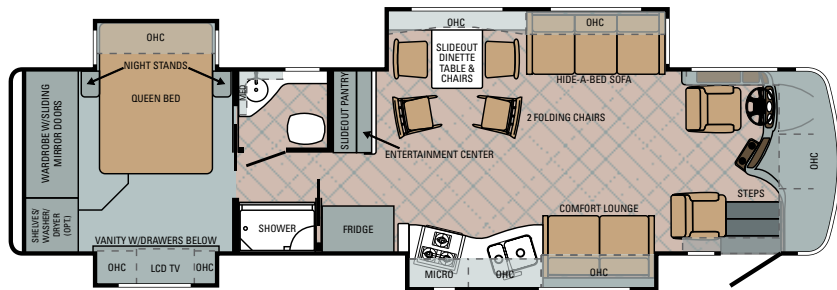
Boasting a 360 horsepower Cummins turbocharged engine with Allison 3000 MH six-speed shift pad electronic transmission, Insignia has power to spare, while its engine brake system provides quieter, more efficient braking.

FLOORPLANS

WARD = wardrobe MICRO = microwave FRIDGE = refrigerator
LAV = bathroom sink OHC = overhead cabinets MED = medicine cabinet

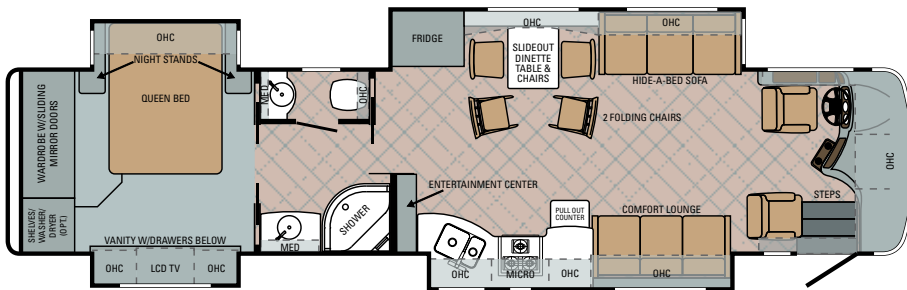
INSIGNIA | 36CKFL

Ext. Length: 37' 7" Ext. Height: 12' 8"



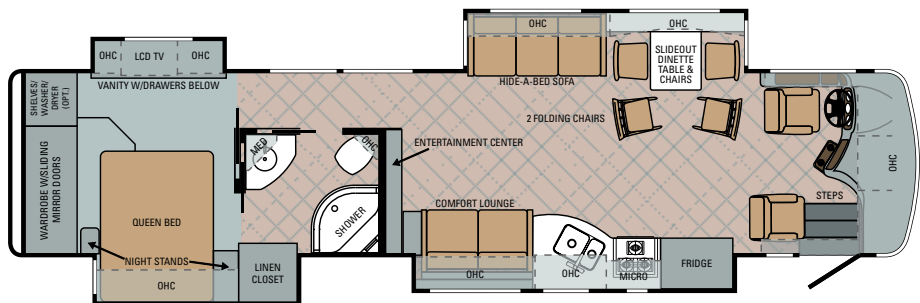
INSIGNIA | 40CKFL

Ext. Length: 40' 9" Ext. Height: 12' 8"



INSIGNIA | 40FKSA

Ext. Length: 40' 9" Ext. Height: 12' 8"



SPECIFICATIONS

FLOORPLAN	GVWR (LBS.)	GCWR (LBS.)	WHEEL BASE	OVERALL LENGTH	OVERALL HEIGHT WITH AIR & SATELLITE	EXTERIOR WIDTH	INTERIOR HEADROOM	FRESH WATER CAPACITY* (GALS.)	GRAY WASTE WATER CAPACITY (GALS.)	BLACK WASTE WATER CAPACITY(GALS.)
36CKFL	32,400	42,400	228"	37' 7"	12' 8"	101"	84"	81	60	60
40CKFL	32,400	42,400	266"	40' 9"	12' 8"	101"	84"	81	60	60
40FKSA	32,400	42,400	266"	40' 9"	12' 8"	101"	84"	81	60	60

STANDARDS AND OPTIONS

STANDARD BATHROOM EQUIPMENT

- 6-panel residential-style passage doors
- 16" x 16" porcelain tile travertine floor in bathroom
- 120V G.F.C.I. protected receptacle
- Bathroom power vent
- One-piece radius fiberglass shower with integrated seat (n/a on 36CKFL)
- Overhead cabinet above stool
- Residential medicine cabinet with mirror
- Satin nickel fixtures
- Skylight in shower
- Theford Aria porcelain stool with push-button flush
- Toilet paper holder
- Towel holder and ring
- Vanity light fixture
- Vessel sink
- Window in commode area

STANDARD BEDROOM EQUIPMENT

- 26" LCD HDTV home theatre system
- Decorative headboard
- Halogen satin nickel reading lights
- Queen bed with pillowtop mattress (60" x 80")
- Quilted bedspread with 2 pillow shams

STANDARD KITCHEN EQUIPMENT

- 16" x 16" porcelain tile travertine floor in kitchen
- 22" oversized oven
- 120V G.F.C.I. protected receptacle
- Amana recessed, sealed 3-burner range
- Amana 1.6 cu. ft. microwave with carousel
- DuPont Corian bi-fold, recessed cover for stove
- DuPont Corian sink covers (2)
- DuPont Corian solid surface countertops with integrated sink
- High-rise single-lever faucet with pull-out sprayer
- Mini-blind
- Norcold 10 cu. ft. refrigerator with ice maker
- Porcelain tile backsplash with inlays
- Silverware drawer, divided for utensils
- Slideout dinette table with (2) comfort chairs and (2) folding chairs
- Under-sink, sink cover storage compartment

DRIVER COMPARTMENT AMENITIES

- 3-point, lap and shoulder safety belts integrated into driver and passenger seats
- 6-way power driver and passenger seat
- 12V auxiliary in-dash receptacle (2)
- 16" x 16" porcelain tile travertine floor in driver compartment
- A/C/heater vents by foot pedals
- Adjustable foot pedal
- Battery boost switch
- Chassis battery disconnect
- Color back-up camera and monitor
- Color-coordinated carpeted floor mats
- Cruise control (SmartWheel controlled)
- Fog lights
- Freightliner Message Center with LCD display featuring: odometer, tachometer, instantaneous fuel economy, fuel remaining, outside air temp., coolant temp., engine oil temp. and pressure, transmission temp., turbo boost pressure and air pressure
- High-output dash heater and A/C
- In-dash compass and exterior temperature gauge

- Intermittent windshield wipers, single motor (SmartWheel controlled)
- Manual side sun visors and privacy shade
- Passenger seat with powered footrest
- Powered front sun visors and privacy shade
- Powered stepwell cover with pinch resistance technology
- Push button shift control
- Chrome, heated, remote control, side-view mirrors
- Docking lights
- Door for dump valve access
- Driving lamps
- Electric-powered, double entrance step
- Entry door with Sur-Seal air lock
- Full-body premium paint package
- Full-width rear mudflap
- Hydraulic automatic leveling jacks (dual positive)
- Lighted heavy-duty grab handle
- One-piece pass-through storage compartments
- Patio light with inside switch
- Rear-molded fiberglass cap with integrated rear intake
- Roof ladder
- Security lights (2)
- Side-hinged baggage doors
- Sliding battery tray (2 positions)
- Uni-Dock exterior utility center, heated and enclosed with second system monitor panel

STANDARD CHASSIS EQUIPMENT

- 2 chassis batteries
- 4.63 rear axle ratio
- 55-degree turning radius
- 100-gal. fuel tank (dual fill)
- 170-amp alternator
- 1,000-watt in-block engine heater
- 10,000-lb.-rated hitch with 7-pin plug
- 20,000-lb.-rated rear axle
- 50,000 PSI frame rail
- Allison 3000 MH 6-speed shift pad electronic transmission
- All-wheel ABS brakes
- Automatic heated moisture ejectors
- Bendix Air Disc front brakes
- Cummins turbocharged ISB 360 HP engine 800-lb. ft. torque at 1,800 RPM
- Daytime running lights
- Engine compression brake
- Freightliner XCR Series chassis
- Front axle I-beam wide track
- Michelin 275/80R 22.5" radial tires
- Leather wrapped steering wheel
- Neway air suspension
- Polished aluminum wheels
- Raised rail for maximum storage
- Rear-mounted radiator with fan clutch
- Remote air fill with air hose
- Sachs shocks

STANDARD CONSTRUCTION FEATURES

- 5/8" plywood main floor decking
- 2" x 4" floor trusses
- 2-3/4" welded tubular-aluminum sidewall construction
- 3M front protective film mask
- 4-1/2" arched aluminum truss roof (R-19)
- Aluma-Tru Superstructure construction on 16" centers
- Cabinetry crafted with screwed hardwood stile construction
- Deluxe hidden cabinet hinges
- Electric-powered Reli-torg slideout system
- Enclosed, insulated and heated floor and underbelly (R-14)
- Frameless flush-mounted slideout rooms
- Fully decked roof with 3/8" plywood
- Insulation package, floor (R-14), roof (R-19), sidewalls (R-10)
- One-piece fiberglass roof
- Sidewalls bolted to frame
- Smooth gel-coat fiberglass exterior walls
- Steel reinforced front cap and windshield frame
- V-Flex rear chassis support
- X-Bridge frames engineered into chassis

STANDARD EXTERIOR EQUIPMENT

- 120V G.F.C.I.-protected exterior receptacle
- Aerodynamic front cap
- Carefree armored slideout awnings
- Carefree Eclipse awning with polyweave fabric, aluminum armor and wind sensor
- CB antenna
- Chrome, heated, remote control, side-view mirrors
- Docking lights
- Door for dump valve access
- Driving lamps
- Electric-powered, double entrance step
- Entry door with Sur-Seal air lock
- Full-body premium paint package
- Full-width rear mudflap
- Hydraulic automatic leveling jacks (dual positive)
- Lighted heavy-duty grab handle
- One-piece pass-through storage compartments
- Patio light with inside switch
- Rear-molded fiberglass cap with integrated rear intake
- Roof ladder
- Security lights (2)
- Side-hinged baggage doors
- Sliding battery tray (2 positions)
- Uni-Dock exterior utility center, heated and enclosed with second system monitor panel

STANDARD INTERIOR EQUIPMENT

- 6-panel residential-style passage doors throughout
- 16" x 16" porcelain tile travertine floor
- 32" LCD HDTV in living area
- Aire-Secure travel locks for all passage doors
- Ball bearing drawer guides 75-lb. capacity with full-drawer extension
- Cable TV hookup with RG6 coax
- Crank-up HDTV antenna with signal booster
- Decorative satin nickel lighting throughout
- Decorative pillows for comfort lounge and hide-a-bed
- Decorative trim package
- Fabric-covered box valances with lambrequin legs
- Hardwood cabinets
- Hardwood fascia boards
- High-intensity halogen recessed 12V lighting package
- Home theater system, Dolby Digital 5.1 Surround Sound with DVD
- Leather hide-a-bed sofa
- Leather comfort lounge
- Lights at entrance steps
- Padded vinyl ceiling throughout
- Phone jack
- Pleated day/night shades throughout
- Prep for satellite dish for roof
- Prep for washer and dryer
- Residential-style trim and molding
- Glazed Maple solid hardwood cabinetry and miter-cornered raised-panel doors throughout

HEAT, POWER AND WATER EQUIPMENT

- 5-watt solar panel (for chassis batteries)
- 12-gal. gas/electric DSI auto-ignition water heater
- 12V demand water pump
- 12V electrical system
- 50-amp electric service
- 50-amp quick-connect power cord with electric reel
- 50-gal. propane gas tank, chassis-mounted

- 2,000-watt inverter with 4-6V batteries
- 42,000-BTU furnace with auto-ignition
- Black holding tank sprayer
- Conveniently placed water pump switches
- Dual 13,500-BTU low profile central A/Cs, digital thermostat, Chillgrille and drain tubes
- Dual insulated ceiling air ducts with adjustable air vents
- Holding and fresh water tanks, radiant-heated
- Hookup for city water
- Onan 6,000-watt diesel generator with auto-changeover on sliding tray
- Onan auto generator and temperature start system
- Outside shower
- Systems monitor panel
- Water heater bypass system
- Water purifier with faucet and ice maker
- Winterizing kit

STANDARD SAFETY EQUIPMENT

- Carbon monoxide alarm
- Deadbolt lock on entrance door
- Egress window
- Fire extinguisher
- Lap safety belts in living area
- Propane alarm
- Security system
- Smoke alarm
- Third brake light

OPTIONS

- 26" LCD HDTV, front overhead
- 15,000-BTU low profile central A/Cs (2) with heat pump and 8,000-watt generator
- Amana 1.6 cu. ft. convection microwave oven in lieu of microwave and oven
- Carefree armored power entrance door awning
- Central vacuum
- Exterior 32" LCD HDTV with CD/DVD player and speakers
- Dual-pane tinted safety-glass windows
- GPS navigation
- Hadley air horns
- King pillowtop mattress (40CKFL)
- Norcold 12 cu. ft. 4-door refrigerator with ice maker
- Slideout cargo tray
- Stackable washer and dryer
- Winegard semi-automatic dome satellite dish

2-YEAR WARRANTY (5-YEAR STRUCTURAL)

Our family is proud to stand behind every Entegra Coach we build. That's why we back our motor coaches with a manufacturer's limited warranty, warranted to the original purchaser for two years (five years structural) from the original date of purchase or 24,000 miles of use, whichever comes first, against defects in materials and workmanship. Our commitment is to provide you with the highest level of products and services possible. We invite you to compare us with other manufacturers—we think you'll find that our passion for your satisfaction is unmatched. For a copy of the limited warranty with full terms and conditions, ask your local Entegra Coach dealer.

3-YEAR PLATINUM-LEVEL ROADSIDE ASSISTANCE

Travel worry-free in your Insignia motor coach with the Entegra Coach Customer First Roadside Assistance program, yours at no cost during your first three years of ownership. This program is offered through Coach-Net, the largest RV emergency road service in the country and gives you immediate access to dependable roadside assistance and support services with a simple phone call.

- Free jump starts
- Free tire changes
- Free fuel delivery
- Free lockout service
- Free travelers checks
- Toll-free nationwide service appointment assistance
- 24-hour toll-free emergency message service
- Free custom trip routing and full-color map service
- Free dispatch of on-site mechanical service
- \$2,000 trip-interruption reimbursement
- RV technical assistance hotline
- Free towing to nearest qualified service

YOUR ENTEGRA COACH DEALER



GROSS VEHICLE WEIGHT RATING (GVWR): The maximum permissible weight of the motor coach, including the Unloaded Vehicle Weight (UVW) plus passengers, personal items, all cargo, fluids, options and dealer-installed accessories. The GVWR is equal to or greater than the sum of the UVW and the Cargo Carrying Capacity.

GROSS AXLE WEIGHT RATING (GAWR): The maximum allowable weight each axle assembly is designed to carry, as measured at the tires, therefore including the weight of the axle assembly itself.

GROSS COMBINED WEIGHT RATING (GCWR): The maximum allowable combined weight of the motor coach used as a tow vehicle and the attached towed vehicle.

It is important for your safety and enjoyment that you are aware of the weights and tow ratings of the RV you select. Consult a competent advisor for questions or advice. Whether you are new to RVing or a veteran, get a feel for the performance of your RV before heading out on the roadways. When you tow a vehicle with your RV, you must drive differently than when you drive a single vehicle. Practice hooking up, driving, backing up and braking in a safe environment or seek out professional instruction. Entegra Coach affixes a weight label to each RV which lists weight information for that vehicle. Refer to that label to verify the vehicle will meet your requirements. See specifications chart inside.

See dealer for further information and prices. All information in this brochure is the latest available at the time of publication approval. Entegra Coach reserves the right to make changes and to discontinue models without notice or obligation. Photos in this brochure may show optional equipment and props for photography purposes. RVs built for sale in Canada may differ to conform to Canadian codes. ©2010 Entegra Coach, Inc. 11-INSG-PL0910-15K Printed in U.S.A.

Entegra Coach, Inc., P.O. Box 460, Middlebury, IN 46540 | www.entegracoach.com



ENTEGRACOACH®

A reputation for integrity isn't built overnight. It happens only after years of doing what you say you will do—and by practicing the Golden Rule.

Over the last 40 years, the Bontrager family has worked hard to establish a reputation of integrity in the RV business. Through ups and downs, successes and failures, these four decades have taught us the importance of doing our best to meet our customers' expectations. And that is why we are excited to introduce the finest line of RVs we have ever built—the motor coaches from Entegra Coach.

We believe Entegra Coach captures everything we stand for, from its structural quality and old-world craftsmanship, to unmatched customer service. We hope you'll take some time with your local dealer to understand why our family stands so strongly behind Entegra Coach.

Without compromise.