



# BAY STAR

2023 GAS MOTOR COACH



# MUCH MORE THAN MEETS THE EYE.

The Bay Star, as one of our popular gas coaches, is all-new for 2023. Not only will you find fresh styling, upgrades, and features never-before-seen on a Bay Star—there’s also plenty more that makes this coach perfect for your adventures.

## Ford® F-53 Chassis

7.3-liter V8 Engine // 350 HP // 468 lb./ft. torque  
Burma Full-Paint Masterpiece Finish™ Exterior



30'–38' // 11 floor plans

# COCKPIT

## 6-Way Power Driver's Seat

Manual Footrest on Passenger Seat

## Redesigned Dash and Cockpit Trim

### Axxera Dash Radio

Apple CarPlay  
Sirius® XM Ready  
10" Single Monitor

### Harman/JBL 180 Watt Sound System

### Two Wireless Charging Pads

### Rear and Side-View Cameras

### Drop Down Bunk Bed Above Cockpit\*

### Folding Cockpit Table

\*Available on select floor plans



# CABIN

**Taller 84" Ceiling Height**

**Three New Décor Options:  
Burma, Axis, and Colusa**

**Newly Designed Furniture\***

Wall Sconces

Vanity Light

**Samsung® LED TV**

Bose® Soundbar (Optional)

**Samsung® 32" LED TV in Front Overhead<sup>1</sup> (Optional)**

**Two 13.5M Penguin™ Heat Pump Air Conditioners**

\*Multiple configurations available

<sup>1</sup>Not available on models with drop down bunk



*Floor plan 3629 shown with Burma décor and Glacier cabinets*

# CABIN

- New Slideout Fascia**
- New Vinyl Tile Flooring**  
Vinyl Plank Flooring (Optional)
- WiFi Ranger Everest System with Aspen Router** (Optional)
- 10.1" Central Monitor Panel\***

\*New for 2023



# GALLEY

## Three Burner Cook Top

## Convection Microwave

## Norcold® 10 cu. ft. Refrigerator

Five Optional Refrigerator Configurations

## Glazed Maple Hardwood Cabinets

Available in Three Matte Finish Color Options  
Soft-Close Cabinet Drawers

## New Cabinet Door and Drawer Front Style

New Hardware

## New Backsplash

## Polished Solid-Surface Countertop

New Countertop Edging  
Undermounted Stainless Steel Sink

## Kitchen Pantry



# DINETTE

## Williamsburg Booth Sleeper Dinette

Drawers Underneath

## Euro Booth Dinette (Optional\*)

\*Additional configurations available



# MASTER BEDROOM

**King Bed\***  
 Pillow Top Mattress (Optional)  
 Power Adjustable Bed Base (Optional)

**Samsung® LED TV**

**Lighted Wardrobe**

**Dresser Drawers**

\*Bed size varies by floor plan





# BATHROOM

**Polished Solid-Surface Countertops**

**40" x 30" or 36" Radius Shower\***

**Solid-Surface Backsplash\*\***

**New Plumbing Fixtures**

**New Sink**

**Gas/Electric Water Heater with Electric Ignition**

Truma Comfort Plus Continuous Water Heater (Optional)

**Linen and Vanity Cabinets**

**Splendide® Stacked Washer and Dryer (Optional)**

\*Shower sizes vary by floor plan

\*\*New for 2023



# EXTERIOR

**New Front and Rear Caps**

**Industry-Exclusive Full-Paint Masterpiece Finish™**

**Three New Graphic Design and Color Options**

**SilverStar® Ultra Headlight Bulbs**

**Exterior Entertainment Center\*** (Optional)

Samsung® 32" LED TV

AM/FM Radio

**Lighted Basement Storage**

\*Available on select floor plans



# EXTERIOR

**5.5 kW Cummins Onan® Generator**  
**25w Solar Panel** (to charge chassis battery)





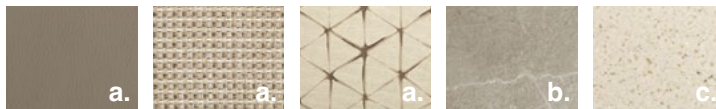
INTERIOR/EXTERIOR  
DESIGN OPTIONS

# Axis

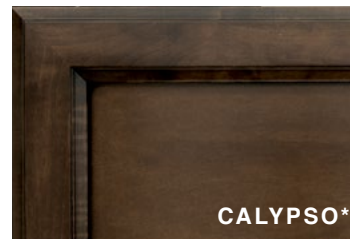
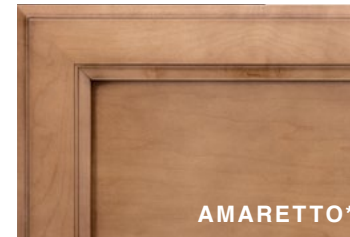
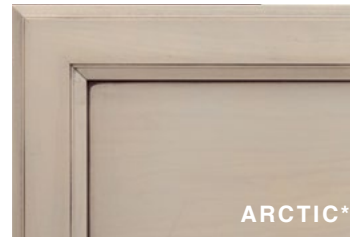


Awning Color: Linen Tweed

**AXIS INTERIOR** a. Furniture/Fabric b. Flooring c. Counter Top



**CABINET FINISHES**



*\*Exterior colors and interior décor options can be matched to customer preference.*

*\*Available in Matte Finish*

# Burma

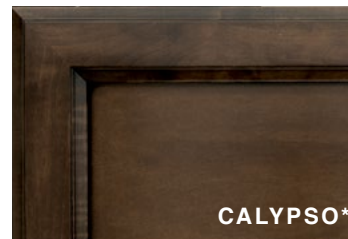
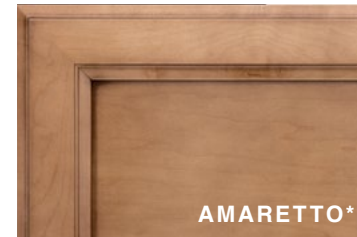
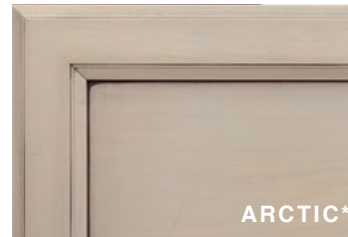


Awning Color: Charcoal Tweed

## BURMA INTERIOR a. Furniture/Fabric b. Flooring c. Counter Top



## CABINET FINISHES



\*Exterior colors and interior décor options can be matched to customer preference.

\*Available in Matte Finish

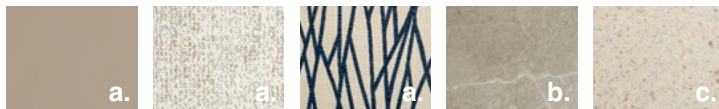
# Colusa



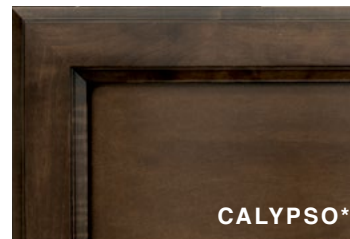
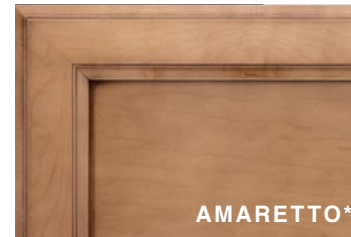
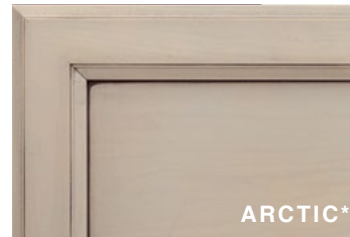
Awning Color: Charcoal Tweed

## COLUSA INTERIOR

a. Furniture/Fabric   b. Flooring   c. Counter Top



## CABINET FINISHES



\*Exterior colors and interior décor options can be matched to customer preference.

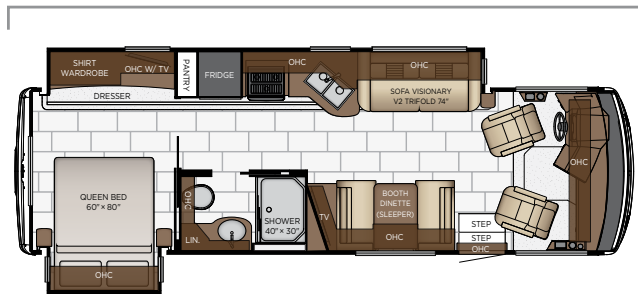
\*Available in Matte Finish



FLOOR PLANS &  
SPECIFICATIONS



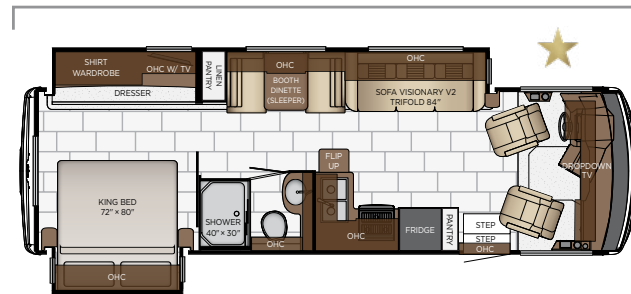
Length: 30' 11"



**3014**

Length	30' 11"	Grey Tank	60 gal.
Width	101.5"	Sewage Tank	40 gal.
App. Overall Height	12' 10"	Water Tank	75 gal.
Interior Width	95.5"	Propane Tank	25 gal.
Interior Height	84"	Furnace	42,000 btu

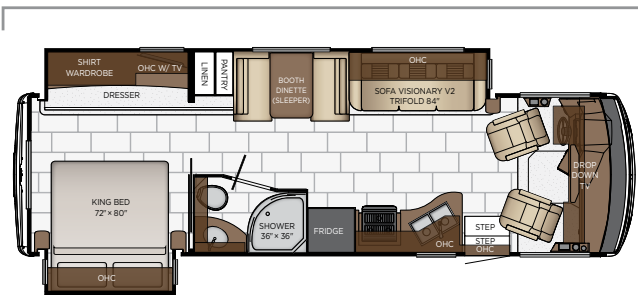
Length: 30' 11"



**3020**

Length	30' 11"	Grey Tank	60 gal.
Width	101.5"	Sewage Tank	40 gal.
App. Overall Height	12' 10"	Water Tank	75 gal.
Interior Width	95.5"	Propane Tank	25 gal.
Interior Height	84"	Furnace	42,000 btu

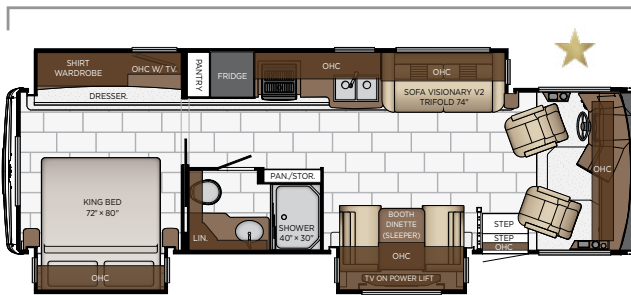
Length: 31' 11"



**3124**

Length	31' 11"	Grey Tank	60 gal.
Width	101.5"	Sewage Tank	40 gal.
App. Overall Height	12' 10"	Water Tank	75 gal.
Interior Width	95.5"	Propane Tank	25 gal.
Interior Height	84"	Furnace	42,000 btu

Length: 32' 11"

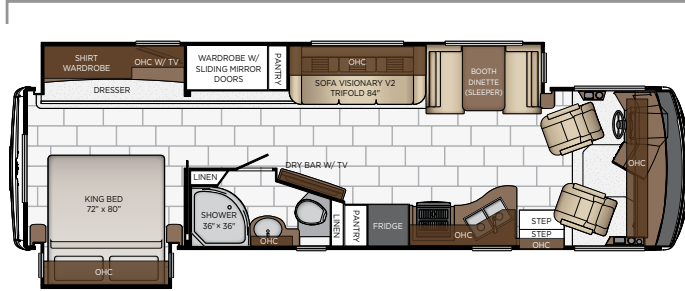


**3225**

Length	32' 11"	Grey Tank	60 gal.
Width	101.5"	Sewage Tank	40 gal.
App. Overall Height	12' 10"	Water Tank	75 gal.
Interior Width	95.5"	Propane Tank	25 gal.
Interior Height	84"	Furnace	42,000 btu

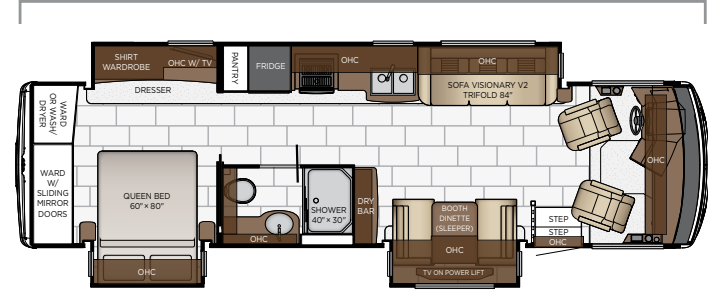
★ - new floor plan

Length: 34' 11"



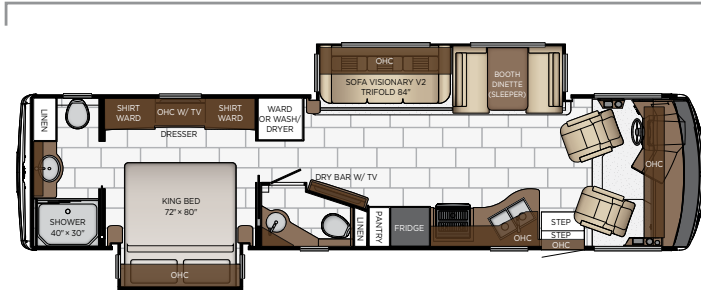
<b>3401</b>	Length	34' 11"	Grey Tank	60 gal.
	Width	101.5"	Sewage Tank	40 gal.
	App. Overall Height	12' 10"	Water Tank	75 gal.
	Interior Width	95.5"	Propane Tank	25 gal.
	Interior Height	84"	Furnace	42,000 btu

Length: 34' 11"



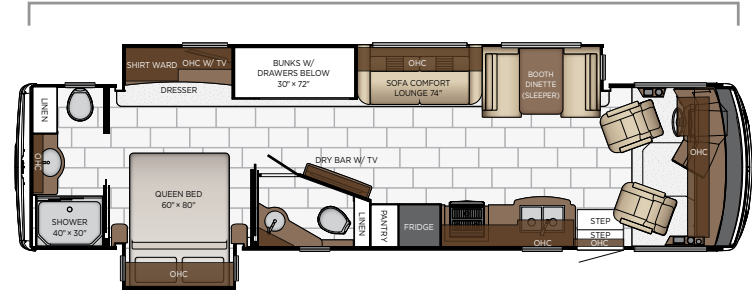
<b>3408</b>	Length	34' 11"	Grey Tank	60 gal.
	Width	101.5"	Sewage Tank	40 gal.
	App. Overall Height	12' 10"	Water Tank	75 gal.
	Interior Width	95.5"	Propane Tank	25 gal.
	Interior Height	84"	Furnace	42,000 btu

Length: 36' 11"

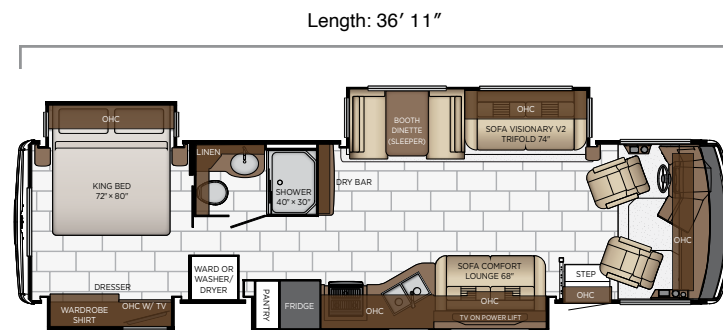


<b>3609</b>	Length	36' 11"	Grey Tank	60 gal.
	Width	101.5"	Sewage Tank	92 gal.
	App. Overall Height	12' 10"	Water Tank	75 gal.
	Interior Width	95.5"	Propane Tank	25 gal.
	Interior Height	84"	Furnace	42,000 btu

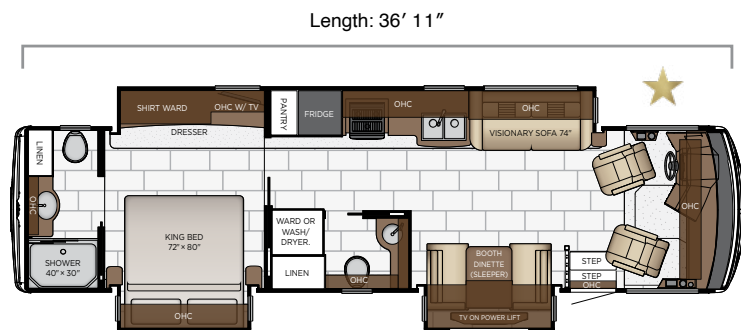
Length: 36' 11"



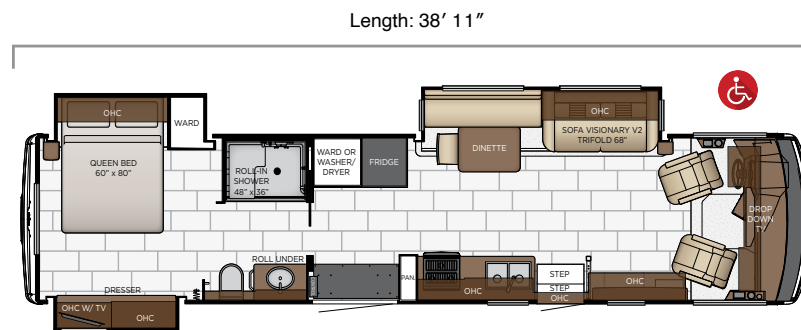
<b>3616</b>	Length	36' 11"	Grey Tank	60 gal.
	Width	101.5"	Sewage Tank	92 gal.
	App. Overall Height	12' 10"	Water Tank	75 gal.
	Interior Width	95.5"	Propane Tank	25 gal.
	Interior Height	84"	Furnace	42,000 btu



<b>3626</b>	Length	36' 11"	Grey Tank	60 gal.
	Width	101.5"	Sewage Tank	40 gal.
	App. Overall Height	12' 10"	Water Tank	75 gal.
	Interior Width	95.5"	Propane Tank	25 gal.
	Interior Height	84"	Furnace	42,000 btu



<b>3629</b>	Length	36' 11"	Grey Tank	60 gal.
	Width	101.5"	Sewage Tank	92 gal.
	App. Overall Height	12' 10"	Water Tank	75 gal.
	Interior Width	95.5"	Propane Tank	25 gal.
	Interior Height	84"	Furnace	42,000 btu



<b>3811</b>	Length	38' 11"	Grey Tank	60 gal.
	Width	101.5"	Sewage Tank	40 gal.
	App. Overall Height	12' 10"	Water Tank	75 gal.
	Interior Width	95.5"	Propane Tank	25 gal.
	Interior Height	84"	Furnace	42,000 btu

★ - new floor plan

## QUALITY YOU CAN FEEL

Like a fine home, the 2023 Bay Star is framed 16 inches on center, and is covered by a fiberglass roof with an integrated gutter rail.

FORD®										
FLOOR PLAN	ENGINE HP	AXLE RATIO	FUEL CAP.	WHEEL BASE	FRONT GAWR	REAR GAWR	GVWR	GCWR	APP. UVW	APP. NCC
3014	350	6.14	80 gal.	210	9000 lb.	15500 lb.	24000 lb.	30000 lb.	20200 lb.	3800 lb.
3020	350	6.14	80 gal.	210	9000 lb.	15500 lb.	24000 lb.	30000 lb.	20200 lb.	3800 lb.
3124	350	6.14	80 gal.	222	9000 lb.	15500 lb.	24000 lb.	30000 lb.	20450 lb.	3550 lb.
3225	350	6.14	80 gal.	228	9000 lb.	15500 lb.	24000 lb.	30000 lb.	21300 lb.	2700 lb.
3401	350	6.14	80 gal.	234	9000 lb.	17500 lb.	26000 lb.	30000 lb.	21200 lb.	4800 lb.
3408	350	6.14	80 gal.	234	9000 lb.	17500 lb.	26000 lb.	30000 lb.	22050 lb.	3950 lb.
3609	350	6.14	80 gal.	242	9000 lb.	17500 lb.	26000 lb.	30000 lb.	21300 lb.	4700 lb.
3616	350	6.14	80 gal.	242	9000 lb.	17500 lb.	26000 lb.	30000 lb.	22050 lb.	3950 lb.
3626	350	6.14	80 gal.	242	9000 lb.	17500 lb.	26000 lb.	30000 lb.	22750 lb.	3250 lb.
3629	350	6.14	80 gal.	242	9000 lb.	17500 lb.	26000 lb.	30000 lb.	22700 lb.	3300 lb.
3811	350	6.14	80 gal.	254	9000 lb.	17500 lb.	26000 lb.	30000 lb.	22750 lb.	3250 lb.

The content in our literature depicts and describes products that are subject to change. For the most recent images and information, please visit [NewmarCorp.com](http://NewmarCorp.com).

Lengths, heights, widths, and dry weights are approximate. Weight will vary based on optional equipment added to the above base weight.

**GAWR:** Gross Axle Weight Rating is the maximum permissible weight for an axle.

**GVWR:** Gross Vehicle Weight Rating is the maximum permissible weight for a fully loaded motor coach.

**GCWR:** Gross Combination Weight Rating is the value specified by the manufacturer of the vehicle as the maximum allowable loaded weight of this motor coach and any towed trailer or towed vehicle.

**UVW:** Unloaded Vehicle Weight is the weight of this motor coach as built at the factory with full fuel, engine oil, and coolants. Does not include cargo, fresh water, propane gas, or dealer-installed accessories.

**NCC:** Net Carrying Capacity is the maximum weight of all occupants, including the driver, personal belongings, food, fresh water, waste water, propane gas, tools, tongue weight of towed vehicle, dealer-installed accessories, etc., that can be carried by the motor coach.

**Specifications supplied by the chassis manufacturer.**

**Bay Star R-Values:**

Roof R-Value = 19

Sidewall R-Value = 11

Floor R-Value = 16

Basement R-Value = 4





FEATURES  
& OPTIONS

## EXTERIOR FEATURES

Full-Paint Masterpiece Finish™ with Clearcoat Finish

Diamond Shield Protection on Front Cap

Automatic Step for Entrance Door

Convex Exterior Mirrors with Defrost and Remote Control

Rear Hitch for Towing Car

Assist Handle at Entrance Door

Undercoating

Mud Flaps

Smart Level Hydraulic Leveling Jacks with Bluetooth Compatible Touch Pad

### OPTIONS

Rear Ladder

Flag Pole Bracket

## CONSTRUCTION FEATURES

One-Piece Molded Fiberglass Roof

Gelcoated Fiberglass Exterior Sidewalls, Front and Rear Caps

Aluminum-Frame Sidewalls and Roof Construction, on 16" Center

5/8" Foam Insulation Laminated in Sidewalls and Ceiling

Automatic Mechanical Lock Arms on Slideout Rooms-Scissor Style

Polar Pak R19 Batten Insulation in Roof

### OPTIONS

Egress Door with Ladder System\*

Power Entrance Step Well Cover on 3811

Power Opening Entrance Door for Wheelchair Lift on 3811

## WINDOWS, AWNINGS, & VENTS

One-Piece Tinted Windshield

Frameless Double Pane Tinted Safety-Glass Windows

Fan-Tastic® Vent with Rain Sensor in Kitchen and Bathroom

Skylight Above Shower

Carefree Travel'r Side Awning with Alumaguard and Strip Lighting

Rear Window in Bedroom\*

Slideout Covers

### OPTIONS

Bunk Windows

Screen Door Over Wheelchair Lift Area on 3811

## CHASSIS FEATURES

Ford® F-53 Chassis with 7.3Ltr V-8 Engine, 24,000 lb. on 30' - 32' Floor Plan

Ford® F-53 Chassis with 7.3Ltr V-8 Engine, 26,000 lb. on 34' - 38' Floor Plan

Aluminum Wheels

Cruise Control

Tilt Steering Wheel

Anti-Lock Braking System

Electronic Stability Control

## AIR CONDITIONING & HEATING

Two 13.5M Penguin™ Heat Pump A/C, 5.5 Onan Generator, 50 Amp Service and Energy Management System

Dash Heater and Air Conditioner

Propane Gas Furnace with Ducted Heat

Defrost Fans Built into Front Overhead

### OPTIONS

Auxiliary Heater in Rear of Coach

## ELECTRICAL FEATURES

5.5 kW Onan® Generator with Remote Switch and Automatic Changeover

10 Watt Solar Panel to Charge Chassis Battery

Two 12 Volt House Batteries

Battery Disconnect Switch for House Battery

12 Volt Auxiliary Receptacle on Dash

45 Amp Converter

Daytime Running Lights

Emergency Engine Start Switch

LED Ceiling Lights

LED Awning Strip Lighting

Lights in Exterior Storage Compartment

Lights in Wardrobe

Manually Operated Hold-To-Run Slideout Switch

Cable TV Connection

USB Outlet at Dash for Driver Use

USB Charger at Passenger Seat Area

Drain Lift Pump with 1200 Watt Inverter\*

Dash Radio, Cameras and Monitors to Power-Up from both House Batteries and Ignition

Multiplex Lighting Control System

Multiplex Monitor System 10.1 in Center of Coach with Interior Lighting and HVAC Controls

Two Wireless Phone Chargers in Cockpit

#### OPTIONS

1200 Watt Inverter Ran to TV's\*

1200 Watt Pure Sine Inverter for Bedbase, Nightstand and Overhead Cabinet Recepts

2000 Watt Pure Sine with CPAP Prep, Six 6-Volt Batteries

Power Rewind Reel with 33' Cord\*

Solar Prep with Six Gauge Wire Ran from Roof to First Storage Compartment

#### PLUMBING & BATH FEATURES

Demand Water System

Sewage Holding-Tank Rinse

Water Heater Bypass System

Dometic® 310 China Bowl Stool

ABS Shower Surround with Shower Door

Exterior Shower Located on Off Door Side

Systems Monitor Panel

#### OPTIONS

Water Filter for Entire Unit

#### INTERIOR FEATURES

Padded Vinyl Ceiling Panels

Decorative Wall Art

Mini Blinds in Kitchen and Bathroom Windows

Vinyl Floor in Kitchen, Living Area and Bathroom

Carpeting on Slideout floors

Interior Assist Handle at Main Entrance Door

Non-Quilted Fitted Bedspread and Accent Pillow

Inlaid Six Panel Design Interior Passenger Doors

Auto Motion Manual Double Roller Shads on Windows Behind Driver and Passenger Area

Auto Motion Power Shade at Windshield and Manual Shades at Driver and Passenger Side Windows

Dash Panel Color Coordinated ABS

Integrated Window Blind System on Entry Door

Shoe Storage Located in Entrance Door Step Compartment

#### OPTIONS

Vinyl Plank Floor in Place of Vinyl Tile

#### CABINETS & FURNITURE

Calypso Glazed Maple Mitered Flat Designer Cabinet Doors-Matte Finish

6-Way Power for Driver Seat

Manual Footrest on Passenger Seat

Concealed Hinges on Cabinet Doors

Drawers Underneath Booth Dinette Seats

Drawers with Full Extension Ball Bearing Guides

Pull-Out Pantry Shelves\*

Polished Solid Surface Countertop in Kitchen with Undermounted Stainless Steel Sink and Sink Covers

Solid Surface Countertops in Bathroom and Bedroom

Dinette Booth Williamsburg Sleeper

Williamsburg Sofa and Front Seats

Passenger Seat Tablet Holder

Lifts on Bed Top

Smooth Top Mattress

Mesh Cell Phone Holder at Each Bunk Bed\*

Soft-Close Cabinet Drawers

Molded Silverware Divider Tray

Bed Base Lowered with Power Incline Head of Bed and Adjustable Support Mattress on 3811

#### OPTIONS

Amaretto Glazed Maple Mitered Flat Designer Cabinets-Matte Finish

Arctic "B" Glazed Maple Mitered Flat Designer Cabinets-Matte Finish

Drop Down Bunk Bed Over Driver/Passenger Seats, Extends to Windshield with Front Overhead Cabinet and Bunk Ladder

Folding Cockpit Table

Plush Pillow Top Mattress

Buffet Dinette

Dinette Combo Desk with Buffet Table, Two Fixed and Two Folding Chairs

Euro Booth Dinette with One Table Leaf

Two Ottomans\*

Two Recliners with Reading Lights

Sofa Incliner 74" Non-Sleeper

Sofa Incliner 84" Non-Sleeper

Theater Seating 74" (Manual) with Reading Lights

Theater Seating 84" (Manual) with Reading Lights

Lowered (Fixed) Bed Base with Freestyle Glideaway Adj. Bed Mechanism with Air Mattress and Window on 3811

Bed Base Power Adj. Height with Freestyle Glideaway Bed Mech., Air Mattress and Window on 3811

Bed Base Full Height on 3811



## APPLIANCES & ACCESSORIES

Convection Microwave 30" Stainless Steel with Three Burner Cooktop

Convection Microwave Below Cooktop on BSCA 3811

Norcold® 10 Cf. Refrigerator

Raised Panel Refer Door Insert

6 gal. Gas/Electric Water Heater with Electric Ignition

### OPTIONS

Norcold® 12 Cf. 4-Door Refrigerator with Icemaker

Icemaker Added to Standard Norcold® Refrigerator

Icemaker Added to Standard Norcold® Refrigerator with Heated Water Line

110 Volt Heat Pads for Holding Tanks

30" Convection Stainless Steel Microwave in Kitchen Overhead with a Drawer Below Cooktop on 3811 Only

Fireplace in Living Area

Prep for Two-Piece Washer and Dryer

Splendide® Two-Piece Stacked Washer and Dryer

Truma Comfort Plus Continuous Hot Water Heater

Whirlpool® 11Cf. Refrigerator with Ice Maker, Inverter 2000W Pure Sine with CPAP Prep, and Six 6-Volt Batteries

Whirlpool® 11Cf. Refrigerator, Inverter 2000W Pure Sine with CPAP Prep, and Six 6-Volt Batteries

## AUDIO, VIDEO & ACCESSORIES

Samsung® LED TV in Living and Bedroom Areas (TV sizes vary per Floor Plan)

Axxera Dash Radio with Apple CarPlay and Sirius® XM Ready, 10" Single Monitor

Dash Radio with Harman/JBL 180 Watt Sound System

High Definition Component Wiring

Rearview Colored Monitor System with Audio

Side-View Cameras Displayed onto Rear View Monitor Screen

Satellite Dish Prep on Roof

Winegard Digital Crank Up TV Antenna

10 Bc Fire Extinguisher, Smoke Detector, Propane and Carbon Monoxide Detector

TV Jack and 110 Volt Recept in Door Side Exterior Storage Compartment

### OPTIONS

43" Samsung® TV on Televator with Fireplace in Place of Front Overhead TV on 3811 Only

Bose® Soundbar Sound System

Samsung® 32" LED TV in Front Overhead\*

WiFi Ranger Denali/Spruce LTE

WiFi System Everest with Aspen Interior Router

Winegard Automatic Dome Satellite Dish-Std/HD, DIRECTV Std. and Bell Canada

Winegard Automatic Open Face Satellite Dish-HD and Bell HD TV

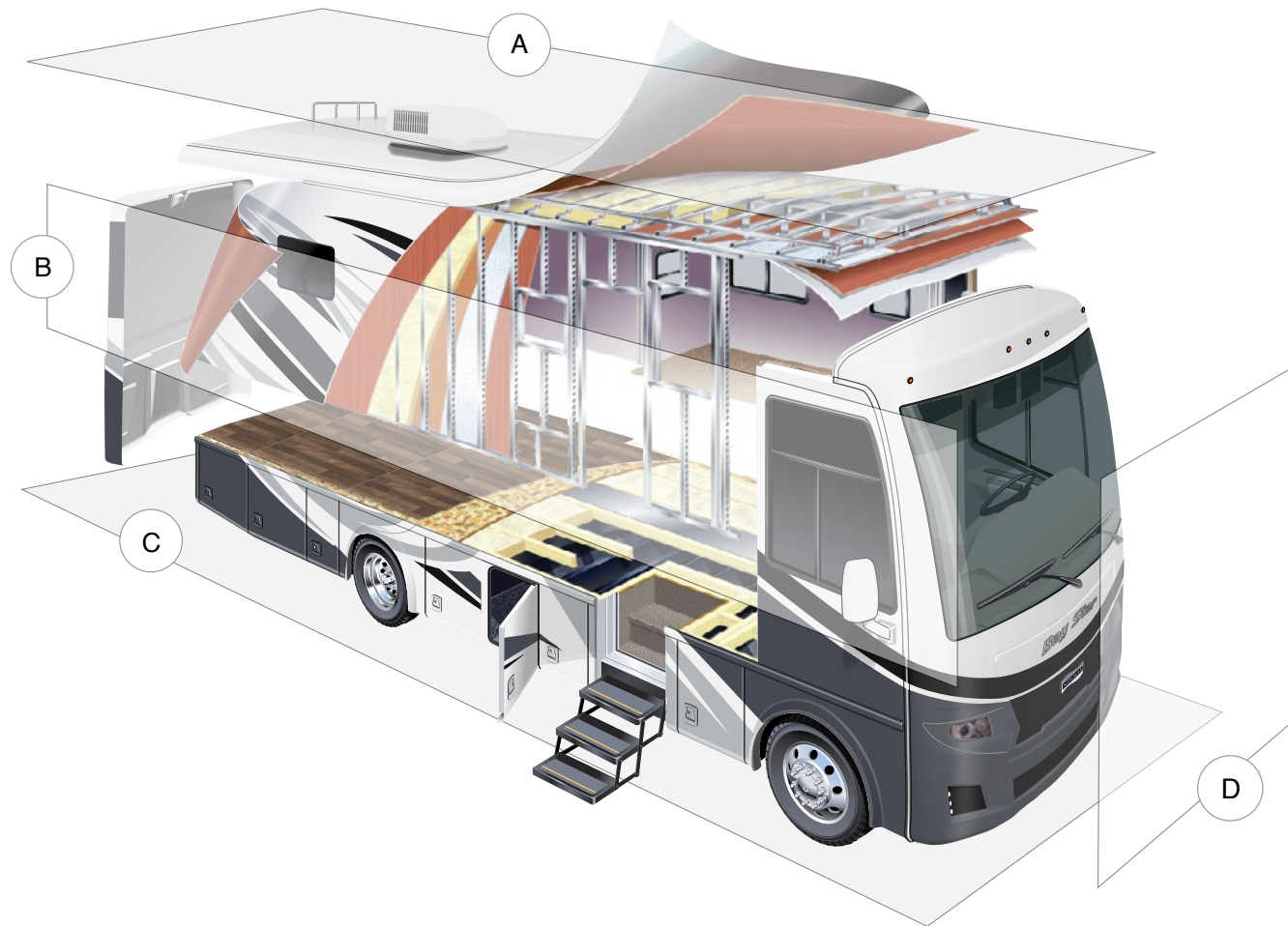
Winegard Automatic Open Face SWM Satellite Dish-DIRECTV Std/HD

Winegard In-Motion Dome Satellite Dish-Std/HD, DIRECTV Std/HD and DIRECTV Std, and Bell Canada

Winegard Rayzar Automatic Digital TV Antenna

Exterior Entertainment Center in Sidewall with Samsung® 32" LED TV, AM/FM Radio and Speakers\*





## A. ROOF

Fiberglass Roof  
 Batten Insulation  
 A/C Ducting  
 16" on Center Aluminum Rafter Framing  
 Kraft Paper Vapor Barrier  
 5/8" Bead Foam  
 3/16" Panel  
 Padded Vinyl Overlay

## B. SIDEWALL

Interior Wall Panel  
 5/8" Bead Foam  
 Kraft Paper Vapor Barrier  
 Batten Insulation  
 Composite One-Piece  
 Gelcoat Exterior Sidewall  
 Aluminum Framing

## C. FLOOR

Carpet/Tile  
 Carpet Padding  
 5/8" Floor Decking  
 Batten Insulation  
 16" on Center Wood Framing  
 Polyethylene Moisture Barrier

## D. EXTERIOR

15M Penguin™ Heat Pump Central  
 Air Conditioner  
 One-Piece Bonded Windshield  
 Coated Aluminum Wheels  
 Frameless, Double-Pane,  
 Tinted Safety Glass Windows  
 Side-Hinged Baggage Doors with  
 Optional Pull-Out Tray

# THE NEWMAR CUSTOMER EXPERIENCE

The Newmar difference goes beyond our industry-leading motor coaches to provide you with an unrivaled ownership experience.



## QUALITY FROM THE START

Every Newmar is crafted one at a time by folks who have spent an average of eight years building them. And each coach we assemble must undergo more than 1,000 tests and checks before ever leaving our factory.



## CAREFULLY SELECTED DEALERS

We view our dealership network in terms of quality, not quantity. Each of our dealers acts as a partner in our shared mission to exceed your highest of expectations, for an ownership experience that's second to none from day one.



## EVERYTHING IN ONE PLACE

As a Newmar owner, you'll find resources specific to your coach through Newgle, an easy-to-use knowledge base that houses everything from user guides to technical support documents.



## FRIENDS FOR LIFE

Meet fellow owners through the Newmar Kountry Klub, a top social club for RV travelers that hosts rallies and other special events throughout the U.S. and Canada.



## SEAMLESS SERVICE

When you join the Newmar family, we pair you with a dedicated service specialist with expert knowledge of your exact coach. Our service specialists guarantee dealer warranty authorizations within four business hours and ship all in-stock parts the same day, free of charge.



## ROCK-SOLID PROTECTION

All models include a one-year/unlimited mileage limited warranty and a five-year, non-transferable structural warranty that covers your coach's superstructure in the event it fails to perform. Ask your Newmar dealer for more details.

# OUR PARTNERS

Newmar Quality Begins with the Company We Keep

You deserve class-leading performance from names you can trust. That's why we only work with suppliers dedicated to providing our customers with unrivaled quality, comfort, and support.

## **BASF**

We create chemistry

The Coatings division of BASF is a global expert in the development and production of innovative and sustainable OEM and refinish coatings that deliver solutions beyond your imagination.



## **INDUSTRIAL FINISHES**

Industrial Finishes has supported RV manufacturers for over four decades. The Industrial Finishes paint process delivers uncompromising quality, providing your coach with a true "Masterpiece" finish.



Driven By You

## **FREIGHTLINER CUSTOM CHASSIS**

Freightliner® Custom Chassis Corp. (FCCC) is renowned for delivering the industry's best ownership experience through exceptional 24/7 factory-direct support, exceptional ride and handling, and developing high-performance innovations such as DRIVETECH. It's the only RV driving system that prioritizes safety and automotive luxury by putting every command at your fingertips.



## **RIVERPARK**

At RiverPark, we proudly represent the leading brands in consumer electronics—brands you know and trust to provide exceptional quality and innovative technology. Newmar features Samsung's incredible 4K TVs, Xite Infotainment systems featuring Nav-N-Go Navigation, Bose® soundbars, and JBL and Infinity premium audio. Step into a 2023 Newmar and experience dazzling audio and video performance throughout the coach.



RV CHASSIS

## **SPARTAN MOTORS**

Spartan® Motors is an American company with over 30 years of experience designing and manufacturing the premier motorhome chassis, which provides superior performance, exceptional safety ratings, and industry-leading technology.



WHEN YOU KNOW THE DIFFERENCE<sup>SM</sup>