



# DYNAQUEST XL

## Freightliner M2 112 Chassis

# 2024

- Cummins 8.9L ISL Turbo Diesel Engine
- Allison 3200 TRV Six-Speed Automatic Transmission
- 450 Horsepower
- 1,250 lb.-ft. of Torque
- Active Brake Assist
- 100-Gallon Fuel Capacity
- 20,000 Tow lbs./2,000 Tongue lbs. Trailer Hitch
- Locking Rear Differential



### Winegard In-Motion T4 Satellite

Dish SD-HD, DirecTV SD, BellTV SD-HD



### Dual 12V 8D AGM Batteries (490 aH)

Developed for military aircraft, they're more durable, longer-lasting, and maintenance-free.



### Dual Integrated Power Awnings

Roof-mounted, integrated armless patio awnings with LED lighting and wind sensors.



### Fiberglass Roof

This crowned, one-piece, fiberglass roof is more durable and easier to maintain than TPO or rubber.



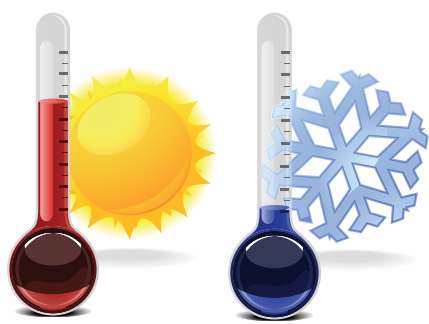
### Multiplex Wiring

Touch screen command center, back-lit switch panels, and Bluetooth smart phone app control



### Winegard AIR 360+ with Gateway Router

WiFi Extender, 4G LTE, Omnidirectional VHF/UHF OTA, FM, and SIM Card Port.



### Dual 15k BTU Air Conditioners with Heat

Take the chill out of the air without using LP.



### 3,000W Hybrid Pure Sine Wave Inverter/Charger (3,500 Peak Watts)

Features a powerful battery charger to run larger loads from either AC power or from the batteries.



### Remote Locking System for Exterior Storage Doors

Keep your valuables safe and secure with these stylish, chrome locking doors.



### 8kw Onan Diesel Generator

Includes auto transfer switch (Mounted on isolator pads) and automatic generator start.



### Home Theater System

Just like home, this system features a sound bar and Bluetooth® connectivity.



### Cut & Buffed Premium Full-Body Paint with Diamond Shield

The sharpest paint job on the road with four color options.

### Washer & Dryer Option

Stackable washer and dryer in place of extra closet space.



### Solid Surface Shower with Glass Door, Skylight & Fold-Down Teak Seat

The comforts and look of your home in your motorhome.



### Gel-Infused Memory Foam Mattress

This king-sized mattress provides enhanced comfort with better heat dispersion.



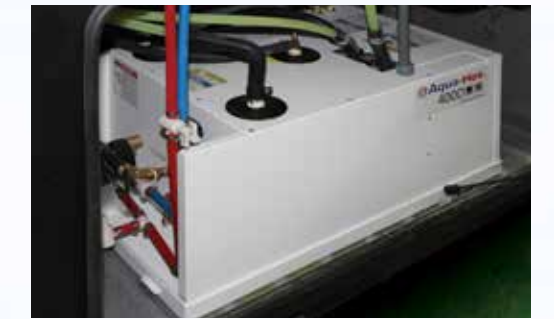
### Weigh Safe Trailer Hitch Receiver

Safely and effectively measures your tongue weight while towing.



### Dual-Stage C-Brake by Jacobs

High/Off/Low braking dash switch for optimal performance.



### Aqua-Hot 450D Diesel System with Engine Pre-Heat

Hydronic heaters deliver on-demand hot water up to 75-gph (Zero recovery time), and controllable warm interiors from diesel or 120V AC.



### Cabinets over Cab

Extra storage over the cab area comes standard with DynaQuest XL.



### Cab-Over Bunk Option

Our extremely popular cab-over bunk gives you extra sleeping and storage versatility.



### Dynamax DynaQuest XL MORE Standard Features

- Quad-View Camera System
- Oxygenics Body Spa RV Shower Head
- Tire Pressure Monitoring System
- Rear Docking Lights
- Rear "DYNAMAX" Rock Guard
- Dual Chrome Roof-Mounted Air Horns
- 4x4 HDMI Matrix
- Lighted Entry Handle
- Enclosed Holding Tanks and Utility Compartment Heated by Aqua-Hot System (Sides, Hitch, Rear Horizon View)
- 200W Solar
- All-Electric Package
- Cedar-Lined Wardrobe
- Solid Surface Countertops with LED Lit Edge and Tile Backsplash
- Soft-Touch Vinyl Ceilings
- Dyson Rechargeable Vacuum with Attachments
- 24 cu. Ft. Residential Refrigerator with Ice Maker (Double-Door)
- Molded Fiberglass Cab Step Covers

### The Optional Xplorer Package



Full Body Paint available in "Light" (Left) or "Dark" (Right).

- Exclusive Xplorer Edition Full-Body Paint Scheme (Xplorer Light or Xplorer Dark)
- Insulated Cab Curtain
- Two Lithium House Batteries (600aH Total)
- 1000W Solar Package
- Insulated Utility Bay



Admiral Blue

Khaki

Merlot

Titanium



DIFFERENT BY DESIGN

2745 Northland Dr. ■ Elkhart IN 46514  
888-295-7859 ■ www.dynamaxcorp.com



Find us on Facebook

fb.me/dynamaxmotorhomes

All information contained in this brochure is believed to be accurate at the time of publication. However, during the model year, it may be necessary to make revisions and Forest River, Inc., reserves the right to make all such changes without notice, including prices, colors, materials, equipment and specifications as well as the addition of new models and the discontinuance of models shown in this brochure. Therefore, please consult with your Forest River dealer and confirm the existence of any materials, design or specifications that are material to your purchase decision. ©2023 Dynamax. A Division of Forest River, Inc., a Berkshire Hathaway Company. 11/23 Dynamax



Learn More  
Scan this barcode using a QR Reader on your smart phone to learn more about Forest River.



A Berkshire Hathaway company.