

SPORTSCOACH SRS



SPORTSCOACH SRS

[SportscoachRV.com](http://SportscoachRV.com)





# THE DRIVE IS IN THE DETAILS.

THIS ECONOMICAL DIESEL HAS IT ALL: POWERFUL DRIVING, SMOOTH HANDLING, SPACIOUS FLOORPLANS, BEAUTIFUL INTERIORS, AND AMAZING FIXTURES. THE ONLY THING MISSING? YOU.



With a solid-surface countertop, stainless steel fixtures and appliances, and a stylish designer tile backsplash, the gourmet kitchen will bring out the chef in you. And when you don't feel like cooking indoors, take the party outside with the exterior kitchen, available on the 339DS, 365RB and 376ES. New cockpit dash console includes LED lighting around cupholders and gauges for easier nighttime navigation. Enjoy the added sleeping room when converting the cabover drop-down bunk for extra guests to sleep over at night.





A dashboard monitor with rear and side color cameras makes backing up and navigating tight spaces a breeze.

An exterior entertainment center, complete with LED TV, brings home entertainment to the great outdoors.

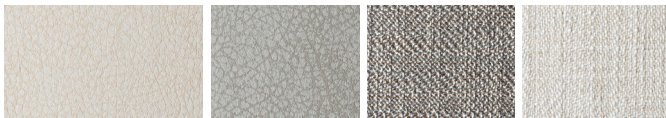
The super durable Tread Lite™ Double Power Step makes it easy to board and exit safely.

Storage is plentiful in Sportscoach SRS, including a pass-through full basement that's ideal for stowing oversized gear without compromising living space.

## INTERIOR DÉCOR COLOR SELECTIONS

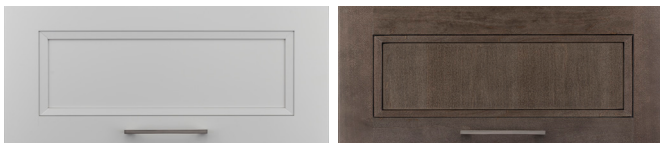


Powell



Tahoe

## INTERIOR WOOD COLOR SELECTIONS



White Velvet

Chocolate Cherry

## EXTERIOR COLOR OPTIONS



Full Body Paint – Meteor



Full Body Paint – Magenta



Full Body Paint – Sandstone



Full Body Paint – Rosewood





Photography features the Sportscoach SRS 354QS floorplan with Powell interior and White Velvet cabinetry.





The stylish bedroom in Sportscoach SRS will have you looking forward to bedtime. A comfortable mattress and modern decor create the perfect environment for rest and relaxation.

The Coach-Pap™ Station allows for storage of CPAP machines and other electronics, located in the cabinet above the bed.



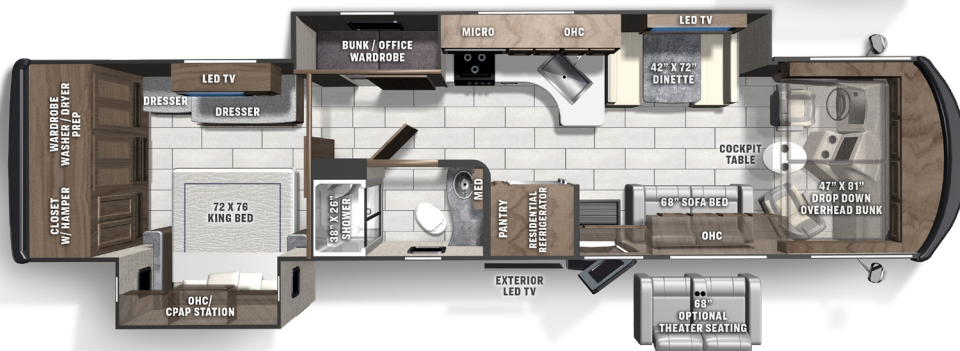
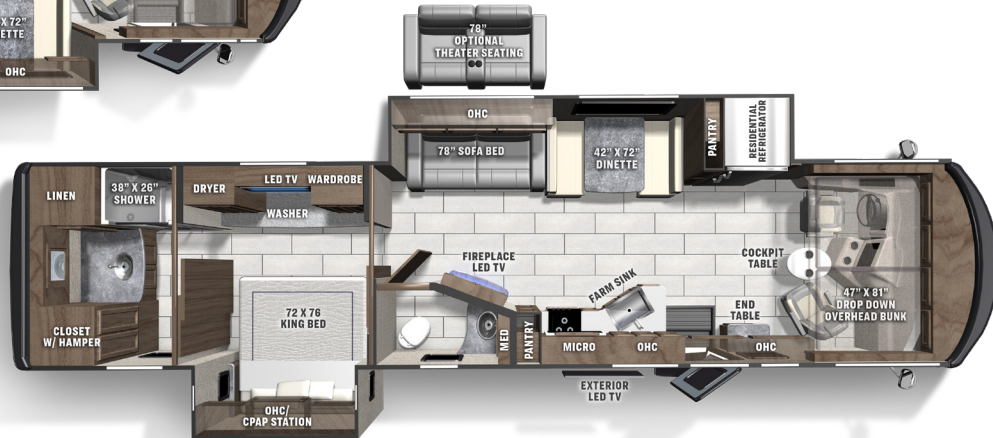
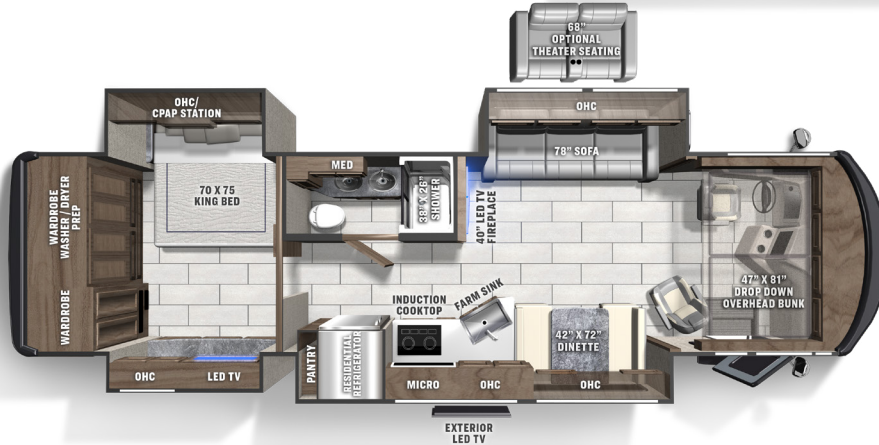
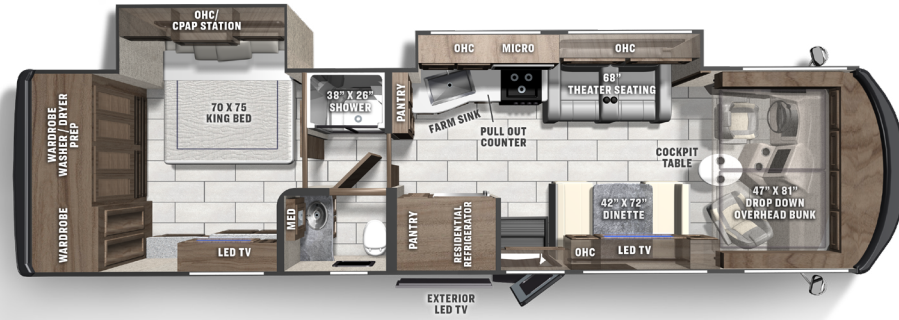
Built with stainless steel and porcelain touches, the bathroom is both appealingly designed and easy to clean.

Sportscoach SRS 354QS boasts plenty of storage and cabinet space. Kick back, relax and enjoy a movie on the 40" TV. The electric fireplace creates the perfect ambiance. It's a traveler's dream come true.



# FLOORPLANS

Sportscoach SRS includes four floorplan options, so you'll have no trouble choosing the one that suits you perfectly.





## SPORTSCOACH SRS SPECIFICATIONS

CLASS A DIESEL	339DS	354QS	365RB	376ES
CUMMINS ISB 6.7L ENGINE	340 HP@2600 RPM	340 HP@2600 RPM	340 HP@2600 RPM	340 HP@2600 RPM
ALLISON TRANSMISSION	2100MH	2100MH	2500MH	2500MH
WHEEL BASE	208"	208"	252"	252"
GVWR	26,000 lbs	26,000 lbs	29,410 lbs	29,410 lbs
GCWR	30,000 lbs	30,000 lbs	33,000 lbs	33,000 lbs
GAWR FRONT	10,410 lbs	10,410 lbs	10,410 lbs	10,410 lbs
GAWR REAR	17,500 lbs	17,500 lbs	19,000 lbs	19,000 lbs
FUEL CAPACITY	90 gal	90 gal	90 gal	90 gal
LP GAS CAPACITY	20 gal	20 gal	20 gal	20 gal
FURNACE (BTUs)	(2) 20,000	(2) 20,000	35,000	35,000
EXTERIOR LENGTH	36' 3"	36' 3"	40' 0"	40' 0"
EXTERIOR HEIGHT (w/A/C)	12' 10"	12' 10"	12' 10"	12' 10"
EXTERIOR WIDTH	102"	102"	102"	102"
FRESH WATER	72 gal	72 gal	72 gal	72 gal
GREY WATER	45 gal	45 gal	45 gal	45 gal
BLACK WATER	45 gal	45 gal	45 gal	45 gal
WATER HEATER	10 gal	10 gal	10 gal	10 gal
AWNING SIZE	18'	14'	17'	20'
TOW HITCH	8,000 lbs	8,000 lbs	8,000 lbs	8,000 lbs

**GVWR (Gross Vehicle Weight Rating)** is the maximum permissible weight of the unit when fully loaded. It includes all weights, inclusive of all fluids, occupants, cargo, optional equipment and accessories. For safety and product performance do NOT exceed the GVWR.

**GCWR (Gross Combined Weight Rating)** is the maximum permissible loaded weight of your motor home and any towed trailer or towed vehicle. Actual GCWR of this vehicle may be limited by the sum of the GVWR and the installed hitch receiver maximum capacity rating; see hitch rating label for detail.

**GAWR (Gross Axle Weight Rating)** is the maximum permissible weight, including cargo, fluids, optional equipment and accessories that can be safely supported by each axle.

**UVW (Unloaded Vehicle Weight)** \* is the typical weight of the unit as manufactured at the factory. It includes all weight at the unit's axle(s), including full fuel, all fluids and LP Gas. The UVW does not include cargo, fresh potable water, additional optional equipment or dealer installed accessories.

\*Estimated Average based on standard build optional equipment.

**CCC (Cargo Carrying Capacity)** \*\* is the amount of weight available for fresh potable water, cargo, passengers, additional optional equipment and accessories. CCC is equal to GVWR minus UVW. Available CCC should accommodate fresh potable water (8.3 lbs per gallon). Before filling the fresh water tank, empty the black and gray tanks to provide for more cargo capacity.

\*\* Estimated average based on standard build optional equipment

Each Coachmen motorhome is weighed at the manufacturing facility prior to shipping. A label identifying the unloaded vehicle weight of the actual unit and the cargo carrying capacity is applied to every Coachmen motorhome prior to leaving our facilities.

The load capacity of your unit is designated by weight, not by volume, so you cannot necessarily use all available space when loading your unit.

Actual towing capacity is dependent upon your particular loading and towing circumstances, which includes the GVWR, GAWR and GCWR as well as adequate trailer brakes. Please refer to the Operator's Manual of your vehicle for further towing information.

All information contained in this brochure is believed to be accurate at the time of publication. However, during the model year, it may be necessary to make revisions and Coachmen reserves the right to make all such changes without notice, including prices, colors, materials, equipment and specifications as well as the addition of new models and the discontinuance of models shown in this brochure. Therefore, please consult with your Coachmen dealer and confirm the existence of any materials, design or specifications that are material to your purchase decision. 12/21

©Copyright 2021 Sportscoach RV a Division of Forest River Inc. – All Rights Reserved.



## STANDARD FEATURES

### INTERIOR APPOINTMENTS

Flat Panel Hardwood Cabinet Doors Throughout  
Self Closing Ball Bearing Drawer Guides  
Throughout  
Solid Surface Countertop in Galley  
Brushed Nickel Hardware and Fixtures  
Manual Side Shades in Driver - Passenger Area  
Deluxe Driver/Passenger Seat  
with 3-Point Seat Belt  
Solar Privacy Shades Throughout  
Theater Seating (339 DS)  
Visionary Sofa Hide-A-Bed  
(376ES, 365RB, 354QS)  
Dream Dinette  
Storage Drawers Under Booth Dinette  
Power Front Solar Privacy Shade  
Upgraded Linoleum Throughout  
Fireplace (365RB, 354QS Only)

### INTERIOR EQUIPMENT

40" LCD TV Coach (339DS, 376ES, 354QS)  
Built-In Sound Bar Entertainment System  
King Jack TV - Radio Antenna  
Pre-Wired for Satellite Dish and Blu-Ray Players  
10" Touch Screen Radio AM/FM Radio  
with Bluetooth Apple CarPlay and  
Android Auto Link Enabled

### GALLEY

30" Stainless Steel OTR Microwave  
Stainless Steel 3-Burner Range  
with Oven and Glass Cover (N/A 354QS)  
Induction Cooktop (354QS Only)  
Convection Microwave (354QS Only)  
Stainless Steel Residential Refrigerator  
Kitchen Backsplash  
Fantastic Power Ceiling Vent  
Solid Surface Sink Covers  
Stainless Steel Farmhouse Sink  
Pop-Up Recept with USB Ports

### BATH AND WATER

Whole Coach Water Filter  
Single Pedal Porcelain Toilet with Sprayer  
Deluxe Fiberglass Shower  
Textured Glass Shower Door  
Power Bath Vent  
Skylight Over Shower  
Winterization INLET at Termination  
Compartment  
Water Pump Switch at Termination  
Black Tank Flush System  
Demand Water Pump  
10-Gallon Gas/Electric Water Heater  
Systems Monitor Panel  
Washer/Dryer Prep

### SLEEPING

King Bed 72 X 76 (365RB, 376ES)  
King Bed 70 X 75 (339DS, 354QS)  
Upgraded Mattress  
Bedspread, Pillows with Shams  
Residential Style Headboard  
32" LCD TV Bedroom  
Front Drop-Down-Bunk  
USB Ports on Both Sides of Bed  
C-PAP Shelf Cabinet  
Bunk/Office/Wardrobe Room (376ES Only)

### ELECTRICAL/HEATING/AC

50-Amp Power Cord  
GFCI Circuit  
Outside Receptacle (DS)  
Emergency Start Switch  
Coach and Chassis Battery Disconnect  
Auxiliary Batteries (4)  
Exterior LED Strip Patio Light  
100W Solar Panel with Controller  
(Aftermarket Upgradeable to 300W)  
35,000 BTU E.I. Furnace (365RB, 376ES Only)  
(2) 20,000 BTU E.I. Furnace  
(339DS, 354QS Only)  
15,000 BTU A/C with Heat Pump Front  
15,000 BTU A/C with Heat Pump Rear  
20-Gallon LP Tank  
6.0 KW Diesel Generator  
2000W Pure Sine Wave Inverter  
with 80-Amp Converter  
Automatic Transfer Switch  
Exterior Cable TV Jack and Tailgater  
Satellite Jack  
LED Interior Lighting  
Auto Generator Start  
Charging Station for Electronic Devices

### AUTOMOTIVE/EXTERIOR

Straight Rail Freightliner Chassis  
Chassis Air Suspension and Air Brakes  
340 HP ISB Cummins Rear Diesel Engine,  
700 lbs./ft. Torque  
6-Speed Alison 2100MH Automatic  
Transmission (339DS, 354QS)  
6-Speed Alison 2500MH Automatic  
Transmission (365RB, 376ES)  
High Definition Back Up and Side Cameras  
Fully Automatic Leveling Jacks  
Defroster Fans  
Cruise Control  
Manual Air Dump  
Intermittent Wipers  
Dash Air Conditioning  
Frameless Tinted Windows with Safety Glass  
Exterior Mirrors with Heat and Remote  
Auxiliary Driving Lights  
Fuel Fills, Both Sides  
Auxiliary Air Supply Hook-Ups  
22.5 Radial Tires with Chrome Wheel Inserts  
Power Step Cover (354QS Only)  
Power Entrance Steps-Double  
Deluxe Radius Entrance Door  
with Dead Bolt Lock  
Front and Rear Fiberglass Caps  
Air Horn  
High Gloss Gelcoat Sidewalls  
(with Azdel™ Superlite Composite)  
Aluminum Side Swing Compartment Doors  
8,000 lb. Towing Hitch with 7-Way Plug  
Power Patio Awning  
Slide-Out Awnings  
Pass Through Basement Storage  
Full Body Paint  
Fire Extinguisher  
LP Leak Alarm  
Smoke Detector  
Carbon Monoxide Detector  
Outside Entertainment Center with 40" TV  
Interior and Exterior Assist Handles  
Exterior Propane Hook-Up  
Oval Cockpit Pedestal Table  
Exterior Bluetooth - TV Audio Speakers

## OPTIONAL FEATURES

### INTERIOR COLOR SELECTIONS

Powell  
Tahoe

### INTERIOR WOOD COLOR SELECTIONS

White Velvet  
Chocolate Cherry

### EXTERIOR COLOR SELECTIONS

Full Body Paint

- Meteor
- Magenta
- Sandstone
- Rosewood

### OPTIONAL FEATURES

Aluminum Wheels  
Power Theatre Seating  
Washer / Dryer  
Dual Pane Windows  
Outside Kitchen (339DS, 365RB, 376ES Only)  
Diamond Shield Paint Protection -  
(Required with Full Paint)  
Entry Door Awning (354QS only)  
CSA Up-Fit  
CD-MVSA (Canadian Motor Vehicle Safety Act)<sup>1</sup>

**Notes:**

<sup>1</sup> *Mandatory For All Canadian Provinces*



# THE COACHMEN ADVANTAGE

What is the Coachmen advantage? It's the collection of unique features offered in a Coachmen motorhome to ensure a smoother ride, a better camping experience, and a motorhome that will last for years.

## 1. NOBLE SELECT™

Protected by a three-year warranty, these sidewalls have a high-gloss gelcoat finish to prevent fading. They are also 20% lighter than wood substrate sidewalls, provide more occupant cargo carrying capacity, and offer three times the insulation against extreme climates.

## 2. AZDEL™ COMPOSITE

Most manufacturers use wood sidewalls that can expand, swell, and eventually mold. We use Azdel. It's impervious to water, won't rot or mold, and with less than a 1% chance of delaminating, it ensures the long-term integrity of the sidewalls.

## 3. REINFORCED LAMINATION

We vacuum bond and pinch roll every sidewall, floor, and roof, then perform a pull adhesion test. Most manufacturers just do one process or the other, but by doing both we improve the strength and longevity of the sidewalls.

## 4. FOREFRONT OF TECHNOLOGY

We offer the latest in technology by pairing electronics with smart phones. A safer and larger viewing area is achieved when dual-mirroring your smart phone GPS to the 10" dash radio and backup system. Play your favorite songs from your favorite apps through Apple Car Play and Android Auto Link.

## 5. SIGHT RITE DASH™

Our dashes are angled 20 degrees forward. This increases the line of sight for the driver, and offers the best road visibility on the market.

## 6. COOL STREAM DUCT™

Our patented duct system evenly disperses air through the whole coach. We use residential ducting instead of Styrofoam because it's antimicrobial, preventing the growth of bacteria and ensuring a cool, clean coach in even scorching heat.

## 7. DIGITAL OWNER'S MANUAL

Our owner's manuals are easy to access through the Coachmen website or our free app. Supplemented with videos, PowerPoints, and more, it's got all you need to know about your coach.



SCAN HERE

To see available  
Standards, Options  
and Features!



Sportscoach RV, a Division of Forest River, Inc.,  
A Berkshire Hathaway Company

423 N. Main St., P.O. Box 30, Middlebury, IN 46540

To learn more about Sportscoach RV and our  
products and see how Sportscoach is making the  
easy life easier, visit [www.sportscoachrv.com](http://www.sportscoachrv.com)

CUSTOMER SATISFACTION



[www.ForestRiverBuyLocal.com](http://www.ForestRiverBuyLocal.com)





**24/7 EMERGENCY  
ROADSIDE ASSISTANCE  
WITH VEHICLE PURCHASE\***

TOWING	WINCH-OUT
JUMP-STARTS	MOBILE MECHANIC
TIRE CHANGES	TECHNICAL
FLUID DELIVERY	SUPPORT
LOCKOUT	DEALER LOCATOR
SERVICE	SERVICES



\*VALID FOR 1 YEAR FROM DATE OF PURCHASE



### Learn More

Scan this barcode using  
a QR Reader on your  
smart phone to learn  
more about Forest River.



A Berkshire Hathaway company.