

TUSCANY XTE

**MADE TO FIT**  
YOUR ENTHUSIASM



**TUSCANY<sub>XTE</sub>**

 **BY THOR MOTOR COACH**



An underwater photograph showing a scuba diver in the center, swimming over a vibrant coral reef. The water is clear and blue, with sunlight filtering through from the surface. The coral is diverse in color and shape, ranging from yellow to purple. Several small fish are visible in the background. In the top left corner, there are thin white lines forming a geometric shape.

LET US HELP YOU  
**MAKE IT A REALITY**





40BX | IVORY SONATA | RESORT CHERRY



40AX | LUNA CREST | MILAN CHERRY



34ST | IVORY SONATA | RESORT CHERRY



WHEN WE SAY *MADE TO FIT*,  
WE MEAN IT.

With so many unique models available, Thor Motor Coach motorhomes are priced to fit anyone's budget. No matter how you choose to spend your time or your money, there's a TMC motorhome that will help you make your dreams a reality.

By building a variety of unique styles, sizes and floor plans, Thor Motor Coach offers motorhomes that feel custom-made – at a truly competitive price.

Welcome to the Tuscany XTE, the motorhome that is *Made to Fit* your enthusiasm.



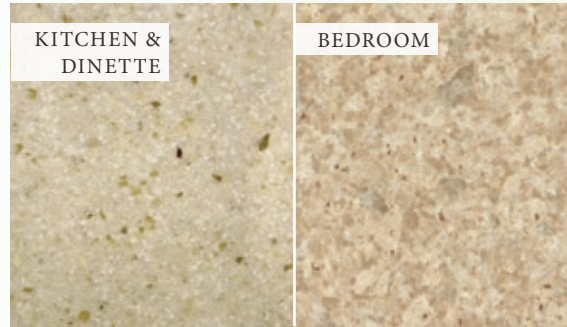
Made to fit.



# WHERE YOU SPEND YOUR TIME...



AVANT-GARDE



COUNTERTOPS



IVORY SONATA



PORCELAIN TILE FLOORING



LUNA CREST



HIGH-GLOSS GLAZED MILAN CHERRY



HIGH-GLOSS GLAZED RESORT CHERRY









## WHAT PEOPLE WILL BE TALKING ABOUT

A combination of striking good looks and functional necessities make the Tuscany XTE the perfect choice. Choose from four exterior paint and graphics packages to make the exterior of the motorhome a perfect fit for your style.



BAJA FULL-BODY PAINT



CAMBRIDGE FULL-BODY PAINT



SOLARIS FULL-BODY PAINT



VALENCIA FULL-BODY PAINT





**A | CUMMINS® ISB 6.7L DIESEL ENGINE**

The Tuscany XTE's Cummins® ISB-XT 6.7L diesel engine is mated to a 6-Speed Allison MH-3000 automatic transmission, providing 360-horsepower and 800 lb.-ft. of torque. This combination delivers maximum performance, reliability and durability.

**B | FULL-BODY PAINT**

A striking exterior graphics design provides a jaw-dropping experience. The paint process includes alternating layers of paint and clear coat to provide a silky exterior finish.

**C | FRAMELESS DUAL PANE WINDOWS**

Sleek, automotive-style frameless windows look great with an added twist of functionality. The dual pane windows are hinged to open outward for ventilation, even in rainy weather.

**D | POWER PATIO AWNING WITH INTEGRATED LED LIGHTING**

A legless, lateral arm awning is fully encased in a metal box protecting it during driving. When extended, the awning does not have legs intruding into the camp area and it has the ability to self-retract in windy situations.

**E | 55° WHEEL CUT**

With a 55-degree wheel cut, the Tuscany XTE can maneuver in and out of tight spaces with ease. You can feel confident behind the wheel when driving in campgrounds, parking lots, and fueling stations.

**F | SIDE VISION CAMERAS**

Side vision cameras, integrated into the exterior mirror housing, vastly increase the line of sight along the side of the coach, keeping you safe on the road.

**G | LED ACCENT LIGHTING**

A beautifully sculpted front cap is fully illuminated with LED accents, including the Tuscany nameplate and accompanying driving lights.





40BX | AVANT-GARDE | RESORT CHERRY



40BX | AVANT-GARDE | RESORT CHERRY







 **THOR**  
MOTOR COACH  
Made to fit.

40AX | LUNA CREST | HIGH-GLOSS GLAZED MILAN CHERRY





*A home needs a strong foundation and that is especially true for the home that rolls down the road. The Atlas™ Foundation under the Tuscany XTE provides an excellent base to construct your new motorhome.*

## LAY THE GROUNDWORK FOR SAFE TRAVELS

The Atlas Foundation™ is the premier building platform and substructure in the industry. Thor Motor Coach has partnered with industry leaders, Freightliner® Custom Chassis and MORryde® International, to bring you this innovative building design.

Innovation doesn't just happen, it takes a dedicated team of the very best designers and engineers working together to tackle the challenges in the road ahead. From the very start our main focus is you, and you will see that from the moment you step into the motorhome.

The Atlas Foundation™ is a fully integrated basement foundation design. This means that trusses, cross members and ladder assemblies are pre-formed and laser-cut from high-strength, 50 grade HSLA steel, which provides greater resistance to corrosion than carbon steel.

The structure is assembled and welded on a flat, laser-leveled table, then hoisted onto the OEM chassis and welded into place. This system includes a built-in, unit floor leveling system, which maintains the true squareness of the motorhome body and helps prevent crowning.

Fiberglass lined, pass-through storage bays span the width of the unit with steel support under each of the compartments. The steel sub-frame can support more than 1,000 pounds per compartment. Designed to facilitate greater luminosity, the interior mold and mildew resistant fiberglass lining is white, making it easier to see within the compartment in low-light situations.

Built strong and insulated to help reduce heat transfer, the firewall and rear engine cage are fully encased in steel, which eliminates engine and road noise.

You're the one who will rely on our innovation for years to come. You're the one who will feel the strength of the Atlas Foundation™ as you drive the open road. You're the one who will benefit from our hard work and commitment to excellence.

We didn't just design the Atlas Foundation™, we crafted it to fit you.



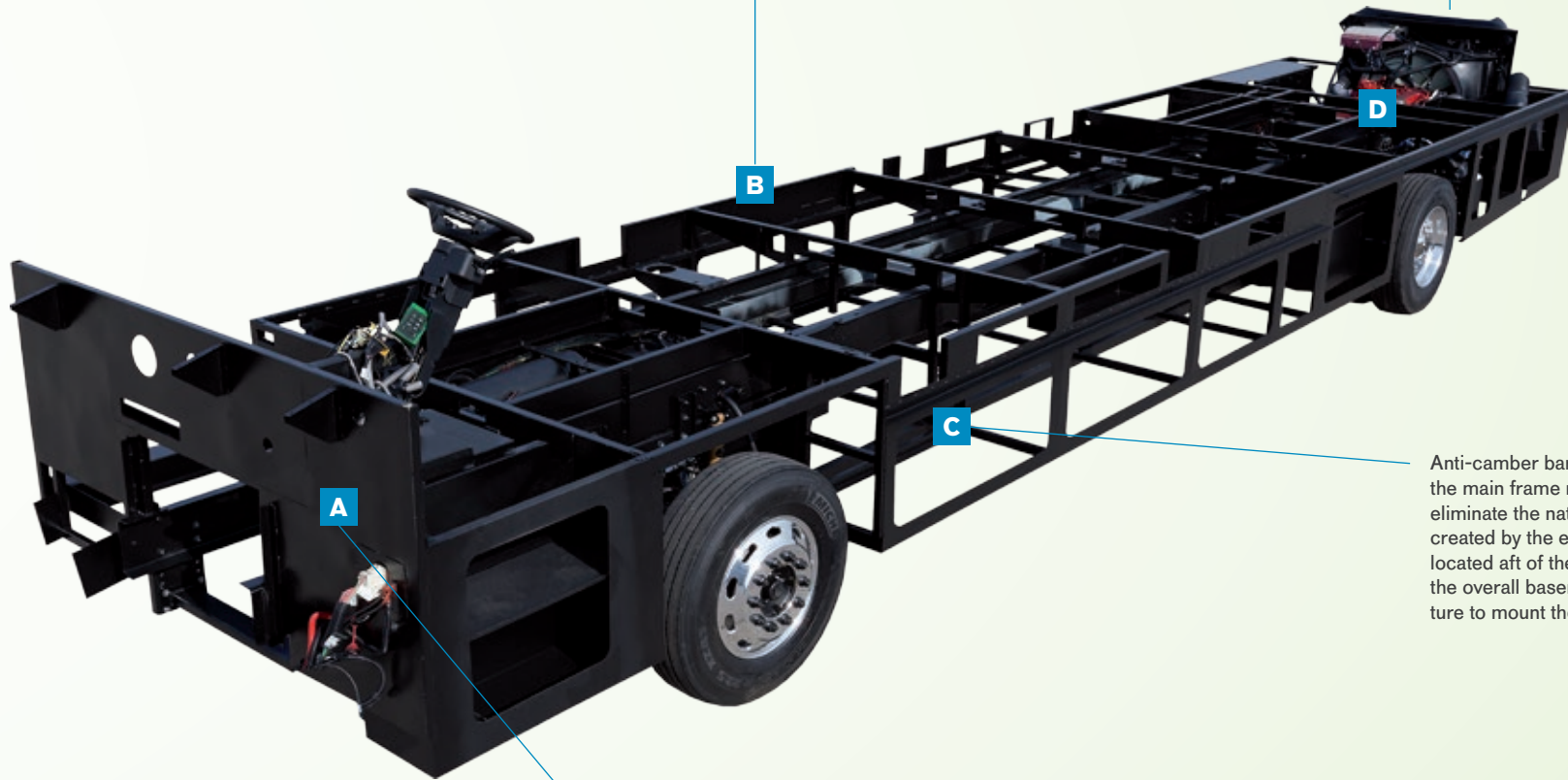
Driven By You





Steel trusses provide consistent support across the entire structure of the floor. The steel is welded in place creating individual compartments which provide ample and pass-through basement storage.

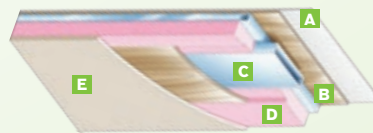
A steel cage surrounds and protects the engine and radiator compartments.



Anti-camber bars are located in parallel with the main frame rails. These steel members eliminate the natural camber of the chassis created by the engine and transmission being located aft of the rear axle. The bars support the overall basement, creating a true structure to mount the house of the motorhome.

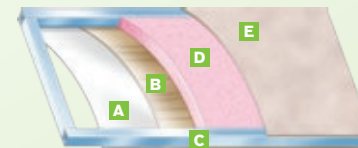
The steel firewall protects the front of the coach while providing a strong anchor point for the cockpit. Solid foam insulation is added to provide a buffer to eliminate road noise and help prevent heat and cold transfer.

Taking the extra time to ensure the best possible structure is exactly what you deserve, and this is why Thor Motor Coach insists on vacuum-bond laminating not only the sidewalls of the motorhome, but also the floor and roof. Vacuum-bonding is the optimum manufacturing process to ensure maximum strength.



#### ROOF

- A** One-piece exterior TPO membrane
- B** Luan panels
- C** Aluminum structure with bowed framing
- D** Block foam insulation
- E** Interior panel with soft touch vinyl covering



#### SIDEWALLS

- A** High-gloss or gel-coat fiberglass
- B** Luan panels
- C** Aluminum structure with framing at all openings
- D** Block foam insulation
- E** Interior panel with designer wall covering



#### FLOOR

- A** Porcelain tile flooring
- B** 1/4" cement board underlayment
- C** OSB structure wood base
- D** Structural steel framing
- E** Block foam insulation
- F** Luan with woven plastic exterior finish





40AX | LUNA CREST | HIGH-GLOSS GLAZED MILAN CHERRY



36MQ | IVORY SONATA | HIGH-GLOSS GLAZED RESORT CHERRY







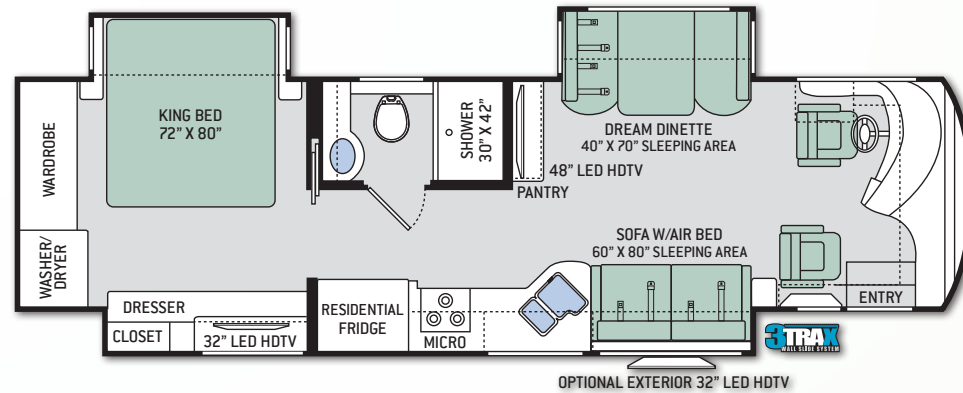
# FLOOR PLANS

Maximum living and seating space is at the forefront of the Tuscany XTE. Lush, well-appointed decors enhance the handcrafted high-gloss glazed cabinetry, along with the high-end amenities, making these wide open spaces feel just like home. The Tuscany XTE offers a wide variety of floor plans made to fit your lifestyle. Optional furniture packages help customize the interior to fit your individual taste.

## 34ST

Chassis	Freightliner XC-R
Gross Vehicle (GVWR)	32,400
Gross Combined (GCWR)	42,400
Wheel Base	208"
Exterior Length	35'-4"
Exterior Height (w/AC)	12'-7"
Exterior Width (w/o mirrors)	101"
Interior Height (living area)	85"
Awning Size	16'-5"
Fuel (gal)	100
LPG (lbs)	126
Fresh/Waste/Gray Water (gal)	91 / 51 / 51
Water Heater (gal)	10
Furnace (BTUs)	Dual 20,000
Exterior Storage Capacity (cu. ft.)	140

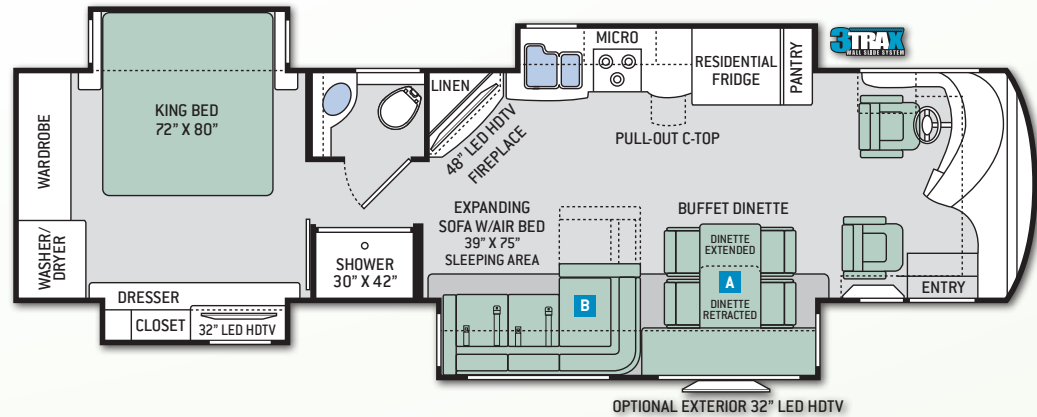
## 34ST



## 36MQ

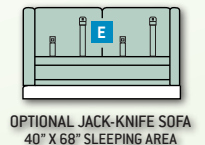
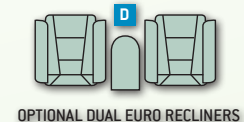
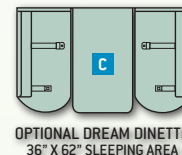
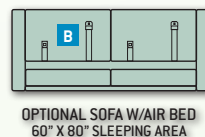
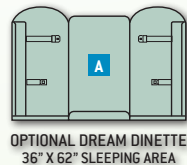
Chassis	Freightliner XC-R
Gross Vehicle (GVWR)	32,400
Gross Combined (GCWR)	42,400
Wheel Base	236"
Exterior Length	37'-8"
Exterior Height (w/AC)	12'-7"
Exterior Width (w/o mirrors)	101"
Interior Height (living area)	85"
Awning Size	13'-1"
Fuel (gal)	100
LPG (lbs)	126
Fresh/Waste/Gray Water (gal)	91 / 51 / 51
Water Heater (gal)	10
Furnace (BTUs)	Dual 20,000
Exterior Storage Capacity (cu. ft.)	185

## 36MQ



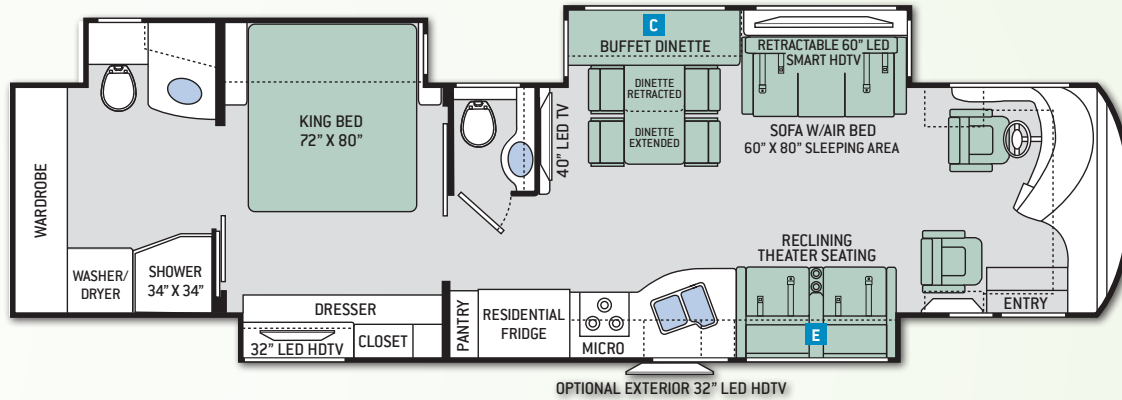
## OPTIONS

\*\*EXTERIOR TV NOT AVAILABLE ON 36MQ WHEN DREAM DINETTE IS OPTIONED

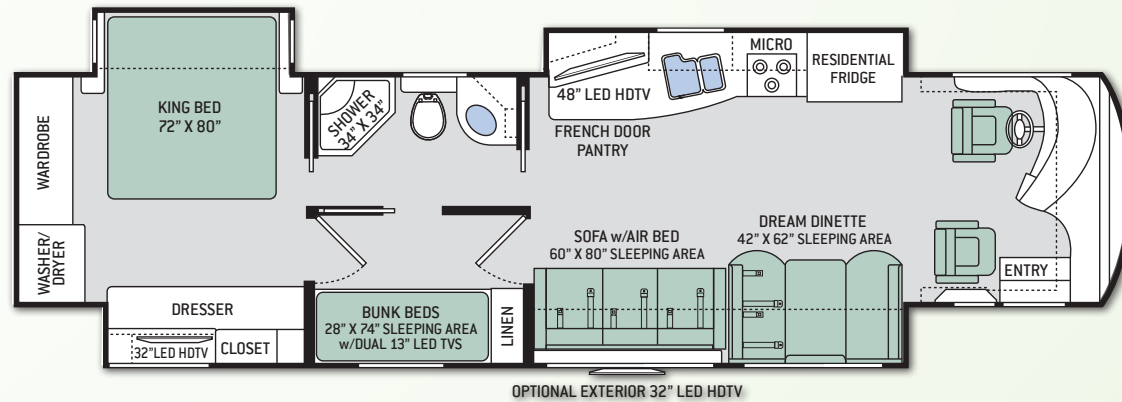




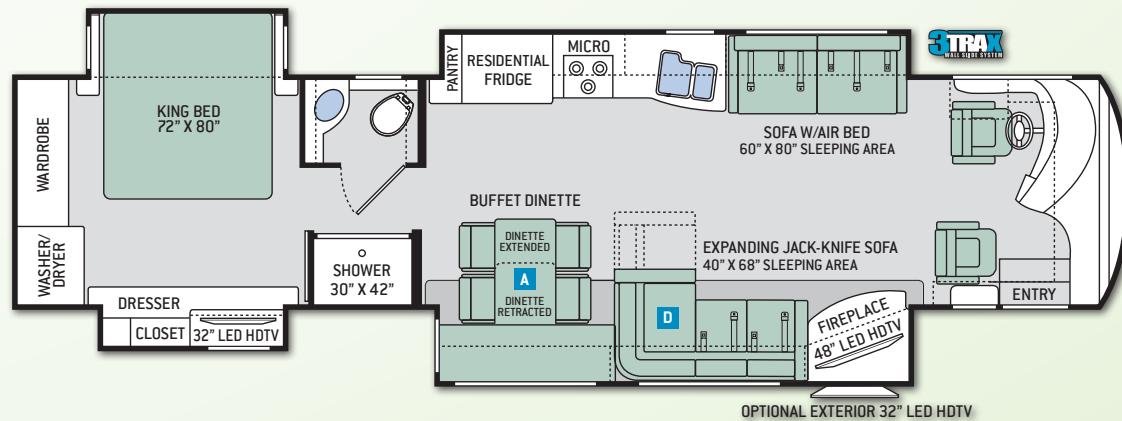
## 40AX



## 40BX



## 40GQ



## 40AX

Chassis	Freightliner XC-R
Gross Vehicle (GVWR)	35,320
Gross Combined (GCWR)	45,320
Wheel Base	276"
Exterior Length	41'
Exterior Height (w/AC)	12'-7"
Exterior Width (w/o mirrors)	101"
Interior Height (living area)	85"
Awning Size	16'-5"
Fuel (gal)	100
LPG (lbs)	126
Fresh/Waste/Gray Water (gal)	91 / 51 / 51
Water Heater (gal)	10
Furnace (BTUs)	20,000 & 25,000
Exterior Storage Capacity (cu. ft.)	225

## 40BX

Chassis	Freightliner XC-R
Gross Vehicle (GVWR)	35,320
Gross Combined (GCWR)	45,320
Wheel Base	276"
Exterior Length	41'
Exterior Height (w/AC)	12'-7"
Exterior Width (w/o mirrors)	101"
Interior Height (living area)	85"
Awning Size	16'-5"
Fuel (gal)	100
LPG (lbs)	126
Fresh/Waste/Gray Water (gal)	91 / 51 / 51
Water Heater (gal)	10
Furnace (BTUs)	20,000 & 25,000
Exterior Storage Capacity (cu. ft.)	225

## 40GQ

Chassis	Freightliner XC-R
Gross Vehicle (GVWR)	35,320
Gross Combined (GCWR)	45,320
Wheel Base	276"
Exterior Length	41'
Exterior Height (w/AC)	12'-7"
Exterior Width (w/o mirrors)	101"
Interior Height (living area)	85"
Awning Size	16'-5"
Fuel (gal)	100
LPG (lbs)	126
Fresh/Waste/Gray Water (gal)	91 / 51 / 51
Water Heater (gal)	10
Furnace (BTUs)	20,000 & 25,000
Exterior Storage Capacity (cu. ft.)	225




This triple track design supports large rooms, like those found in full-wall slideouts, ensuring simple, reliable, maintenance-free operation. What sets 3TRAX™ apart is the patented rail system, in-floor roller guides and electric motor design which is contained within the sidewall of the motorhome.



# STANDARDS & OPTIONS

## CONSTRUCTION & EXTERIOR

- Freightliner® XC-R Raised Rail Chassis
- Cummins® ISB-XT 6.7L Diesel Engine with 360HP, 800 lb.-ft. Torque
- 6-Speed Allison MH-3000 Automatic Transmission
- Air-Ride Suspension
- I-Beam Front Axle with 55° Wheel Cut
- Full Air Front Disc & Rear Drum Anti-Lock Brakes
- Exhaust Brake
- Sachs® Shock Absorbers
- Dual Fuel Fills
- One-Piece Fiberglass Front & Rear Caps
- Invisible Bra
- One-Piece Tinted Windshield
- Full-Body Paint Package with Gel-Coat Sidewalls
- Automatic Leveling Jacks with Touchpad Controls
- Locking Side-Hinged Compartment Doors
- Full Basement Pass-Through Storage
- Easy Slide Storage Tray
- Power Entry Door & Patio Awnings with Integrated LED Lighting
- Slideout Topper Awnings
- 3TRAX® Wall Slide System (34ST & 40GQ) 
- Roof Ladder
- Frameless Dual Pane Windows
- Outside Shower

## AUTOMOTIVE & COCKPIT

- 10" Touchscreen AM/FM Dash Radio with CD/DVD Player, Bluetooth® & Back-Up Monitor
- Chrome Heated/Power Mirrors with Integrated Side View Cameras
- Leatherette Reclining/Swivel Captain's Chairs with 6-Way Power Adjustment

- Driver & Passenger Overhead Storage Cabinetry
- Fog Lights
- Air Horn
- Electric Windshield Solar & Privacy Shades
- Manual Side Window Solar & Privacy Shades
- Electric Step Cover
- 10,000-lb. Trailer Hitch with 7-pin Round Connector
- 275/80R 22.5" Radial Tires with Aluminum Wheels

## INTERIOR

- Porcelain Tile Throughout
- High-Gloss Glazed Cabinetry with Raised Panel Hardwood Cabinet Doors & Nickel Finish Hardware
- Hardwood Veneer in Select Areas
- LED Ceiling Lights
- Window Solar & Privacy Shades
- Electric Fireplace with Remote Control (36MQ & 40GQ)
- Leatherette Sofa with Air Bed (STD 34ST, 40AX, 40BX & 40GQ)
- Leatherette Expanding Sofa with Air Bed (36MQ)
- Leatherette Expanding Jack-Knife Sofa (40GQ)
- Leatherette Theater Seating with Footrest (40AX)
- Leatherette Dream Dinette® Booth (34ST & 40BX)
- Buffet Dinette with Four (4) Chairs – Includes Two (2) Folding (36MQ, 40AX & 40GQ)

## INTERIOR OPTIONS

- Leatherette Sofa with Air Bed (36MQ)
- Dual Leatherette Euro Recliners with End Table (40GQ)

- Leatherette Jack-Knife Sofa (40AX)
- Leatherette Dream Dinette® Booth (36MQ\*\*, 40AX & 40GQ)

## KITCHEN

- 22 cu. ft. Stainless Steel Residential Refrigerator with In-Door Ice & Water Dispenser
- 3-Burner Gas Cooktop
- 1.9 cu. ft. Stainless Steel Over-the-Range Convection Microwave Oven
- Solid Surface Countertops, Cooktop Cover & Sink Covers
- Large Double Bowl Kitchen Sink with Single Handle Faucet & Sprayer
- Designer Backsplash with Tile Accent
- 12-Volt Attic Fan

## BEDROOM & BATHROOM

- Denver Mattress® Pillowtop King Size Bed
- Bedspread with Throw Pillows
- Bunk Beds (40BX)
- Porcelain Toilet
- Oversized Full Height Shower with Glass Door
- Power Vent in Bathroom

## ENTERTAINMENT

- 48" LED HDTV in Living Area (34ST, 36MQ & 40BX)
- 40" LED HDTV & 60" LED Smart HDTV in Living Area (40AX)
- Surround Sound Blu-Ray Home Theater in Living Area
- 32" LED HDTV in Bedroom
- Dual 13" LED TVs with DVD Player in Bunk Bed Area (40BX)
- Cable TV & HDMI Video Ready
- Winegard™ TRAV'LER HD Satellite

## ENTERTAINMENT OPTIONS

- 32" LED HDTV in Cockpit Overhead (34ST, 36MQ, 40BX & 40GQ)
- Exterior 32" LED HDTV\*\*
- Canadian Winegard™ TRAV'LER HD Satellite

## ELECTRICAL & PLUMBING

- Cummins Onan® RV QD 8000 Diesel Generator
- Automatic Generator Start
- 50-amp Shoreline Power Cord
- Pre-Wired for Solar Charging
- 2000-watt Inverter / 100-amp Converter
- Dual 15,000 BTU Low-Profile Ducted Air Conditioners with Two (2) Heat Pumps
- Dual 20,000 BTU Ducted Electronic Ignition Furnaces (34ST & 36MQ)
- (1) 20,000 & (1) 25,000 BTU Ducted Electronic Ignition Furnace (40AX, 40BX & 40GQ)
- Energy Management System
- Emergency Start Switch
- Four (4) Auxiliary House Batteries
- Battery Disconnect Switch
- Exterior GFCI Recept
- 10-gallon DSI Gas/Electric Water Heater
- Enclosed & Heated Holding Tanks
- E-Z Flow Water Panel with Whole-House Water Filtration
- Black Tank Flush System
- Systems Control Center
- Stackable Washer & Dryer
- Central Vacuum System with Toe-Kick Dustpan

\*\*EXTERIOR TV NOT AVAILABLE ON 36MQ WHEN DREAM DINETTE IS OPTIONED

Thor Motor Coach is the industry leader in innovative design and builds a variety of unique styles, sizes and floor plans that feel custom-made – at a truly competitive price.

**IMPORTANT-PLEASE READ:** This brochure reflects product design, fabrication, material, components and specifications at the date of printing, which date is disclosed below. Please visit us online at [ThorMotorCoach.com](http://ThorMotorCoach.com) or consult with your selling dealership for the latest in standards, options, specification and technical information. Photographs in the brochure may depict optional equipment or may only be available in certain floor plans. Components, appliances and the chassis may have been manufactured in a calendar year before the vehicle's designated model year. All capacities are approximate. The actual length of the vehicle may differ from that indicated in the brochure due to variances in the manufacturing processes and/or installed components. All dry weights are based on standard model features and do not include optional features or equipment. Component part and appliance manufacturers issue limited warranties covering portions of the vehicle not covered under the limited warranty we issue. Copyright Thor Motor Coach, Inc. © 12/15/15

YOUR LOCAL THOR MOTOR COACH DEALER



Made to fit.

P.O. Box 1486, Elkhart, IN 46515  
Sales Department: 800.860.5658  
Customer Service: 877.855.2867

[thormotorcoach.com/tuscany/xte](http://thormotorcoach.com/tuscany/xte)