

SUNSEEKER

BY FOREST RIVER



TS



MBS



A Berkshire Hathaway company.

SUNSEEKER

BY FOREST RIVER



Tasteful design, combined with a unique combination of style, value and preferred amenities make travel in the Sunseeker comfortable and loads of fun. Sunseeker's unique split level design provides maximum headroom in the living area, while still offering pass-through storage on every floorplan. Plus, all Sunseekers are "Certified Green" by TRA Certification.

STANDARD SERIES TOP FEATURES

- Lane departure warning system
- 7' Ceiling height
- Crowned fiberglass roof
- Trekker cap option with built-in entertainment center and storage IPO overhead bunk
- 2" Thick gel coat sidewalls with lightweight composite waterproof material
- Firestone Ride-Rite™ suspension
- Heated enclosed tanks
- Water filtration system
- Electric awning with LED lights
- Valve extensions for rear tires
- 7,500 Lb. tow rating (Ford only)
- Two cab-over windows in bunk area (N/A Trekker cap option)
- Upgraded stainless steel appliances with 1.3 cu. ft. microwave
- 40" 12V LED TV
- Standard side view and back-up cameras
- Slide out awning toppers
- Surround sound with exterior speakers
- CarPlay/Android Play Sony® stereo
- Maxx Air vent with cover
- Solar prep

3050S Shown in Khaki Decor with Rustic Cherry cabinetry



Shown with the low profile, seamless Trekker cap for aerodynamic styling and improved fuel economy.

Standard graphics package

Topaz full body paint option



2420MS Shown in Stone decor with Rustic Cherry Cabinetry



2420MS Rear bath/closet

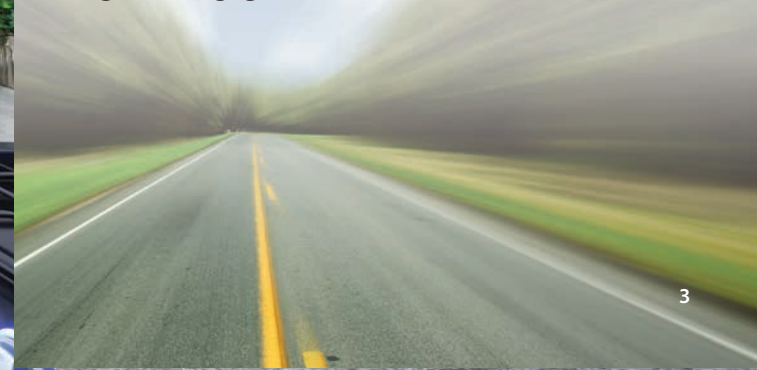


Lane Departure Warning System

(N/A on LE and Transit models)



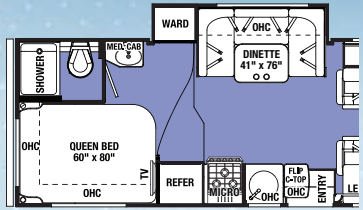
- NEW Voyager® VBSD1 Blind Spot Detection System
- Specifically engineered to enhance Class C motorhome safety
- Visual and audible alerts warn drivers of obstacles not visible in the rear view mirror
- Uses radar detecting sensors on the rear corners of the motorhome that communicate with LED beacons in the cab
- Beacons remain lit until the blind spot is clear
- Beacon flashes with an audible alert when turn signal is engaged



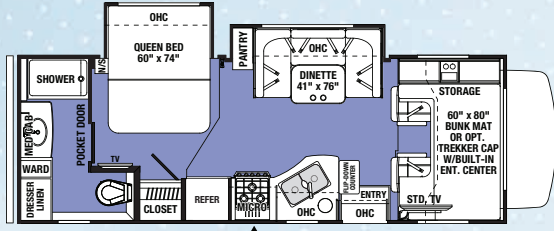
SUNSEEKER

BY FOREST RIVER

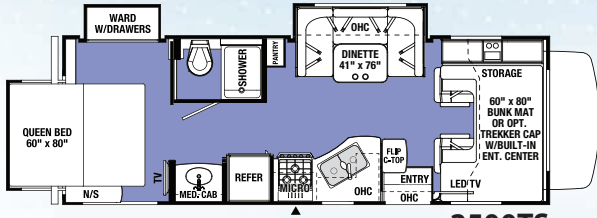
STANDARD SERIES FLOORPLANS



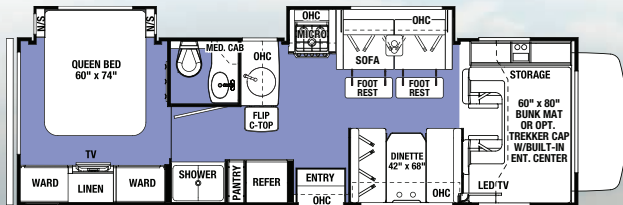
2290S



2440DS

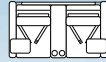


2500TS



2860DS

OPTIONS



RECLINERS
3010DS

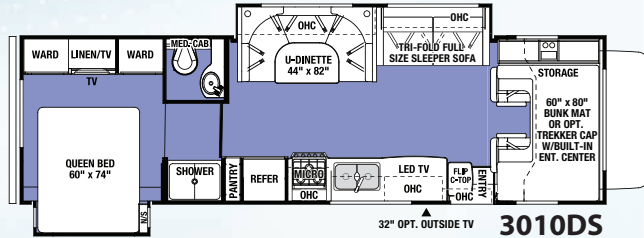


4-DOOR
REFER

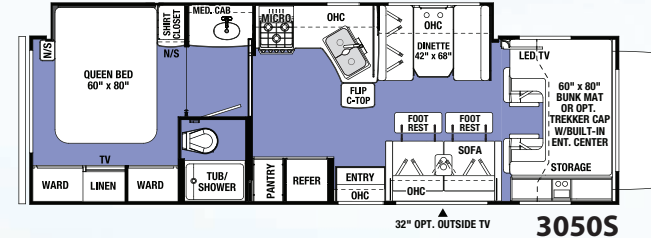
SIDE-BY-SIDE
REFER
2860DS
3010DS
3050S
3270S



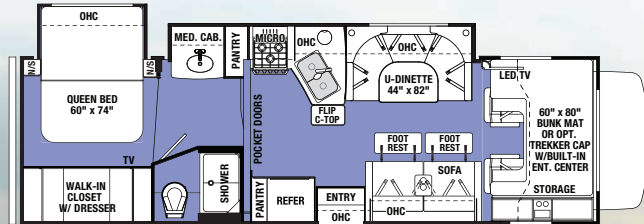
3050S Shown in Khaki Decor with Rustic Cherry cabinetry



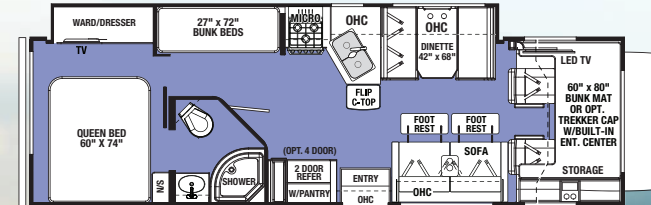
3010DS



3050S



3040DS



3270S

GVWR (Gross Vehicle Weight Rating) - is the maximum permissible weight of the unit when fully loaded. It includes all weights, inclusive of all fluids, occupants, cargo, optional equipment and accessories. For safety and product performance do NOT exceed the GVWR.

GCWR (Gross Combined Weight Rating) - is the maximum permissible loaded weight of your motor home and any towed trailer or towed vehicle. Actual GCWR of this vehicle may be limited by the sum of the GVWR and the installed hitch receiver maximum capacity rating; see hitch rating label for detail.

GAWR (Gross Axle Weight Rating) - is the maximum permissible weight, including cargo, fluids, optional equipment and accessories that can be safely supported by each axle.

UVW (Unloaded Vehicle Weight)* - is the typical weight of the unit as manufactured at the factory. It includes all weight at the unit's axle(s), including full fuel, all fluids and LP Gas. The UVW does not include cargo, fresh potable water, additional optional equipment or dealer installed accessories.

*Estimated Average based on standard build optional equipment.

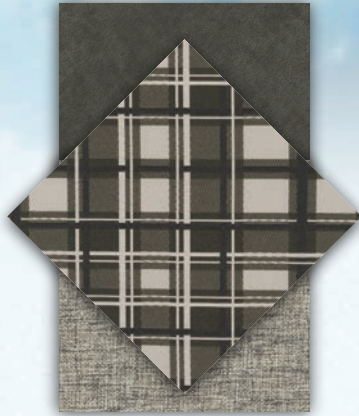
CCC (Cargo Carrying Capacity)** - is the amount of weight available for fresh potable water, cargo, passengers, additional optional equipment and accessories. CCC is equal to GVWR minus UVW. Available CCC should accommodate fresh potable water (8.3 lbs per gallon). Before filling the fresh water tank, empty the black and gray tanks to provide for more cargo capacity.

**Estimated average based on standard build optional equipment.

Each Forest River RV is weighed at the manufacturing facility prior to shipping. A label identifying the unloaded vehicle weight of the actual unit and the cargo carrying capacity is applied to every Forest River RV prior to leaving our facilities. The load capacity of your unit is designated by weight, not by volume, so you cannot necessarily use all available space when loading your unit. Actual towing capacity is dependent upon your particular loading and towing circumstances, which includes the GVWR, GAWR and GCWR as well as adequate trailer brakes. Please refer to the Operator's Manual of your vehicle for further towing information.

DECOR

STONE



KHAKI

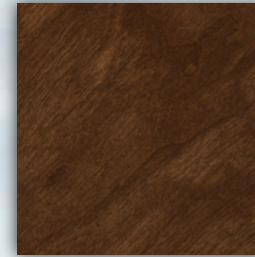


HAZELNUT



CABINETRY

RUSTIC CHERRY



WEATHERED TEAK



Sunseeker Ford • Chevy Chassis	2290S	2440DS	2500TS	2860DS	3010DS	3040DS	3050S	3270S
Wheelbase	158" • 159"	182"	182" • 183"	202" • 203"	220"	220"	220"	220"
GVWR	14500 • 14200	14500	14500 • 14200	14500 • 14200	14500	14500	14500	14500
GAWRR	9600 • 9600	9600	9600 • 9600	9600 • 9600	9600	9600	9600	9600
GAWRF	5000 • 4600	5000	5000 • 4600	5000 • 4600	5000	5000	5000	5000
UVW	10624 • 10452	11690	11873 • 11910	12500 • 12550	12780	12930	12910	12917
GCWR	22000 • 20000	22000	22000 • 20000	22000 • 20000	22000	22000	22000	22000
CCC	3876 • 3748	2810	2627 • 2290	2000 • 1650	1720	1570	1590	1583
Fuel Capacity (Gal.)	55 • 57	55	55 • 57	55 • 57	55	55	55	55
Hitch Rating	7500/500 • 5000/500	7500/500	7500/500 • 5000/500	7500/500 • 5000/500	7500/500	7500/500	7500/500	7500/500
Length - Bumper To Bumper	24' - 6" • 25'	27' - 1"	27' - 1" • 27' - 7"	30' - 9" • 31' - 3"	32' - 3"	32' - 3"	31' - 11"	31' - 11"
Exterior Height With A/C	11' - 3"	11' - 3"	11' - 3"	11' - 3"	11' - 3"	11' - 3"	11' - 3"	11' - 3"
Exterior Width	101"	101"	101"	101"	101"	101"	101"	101"
Interior Width	95.5"	95.5"	95.5"	95.5"	95.5"	95.5"	95.5"	95.5"
Interior Height Frt/Rear	84"/77"	84"/77"	84"/77"	84"/77"	84"/77"	84"/77"	84"/77"	84"/77"
Fresh/Grey/Black Water (Gal.)	44/39/39	44/39/39	44/39/39	44/39/39	44/39/39	44/39/39	44/39/39	44/39/39
L.P. Capacity (Gal.)	9.8	9.8	9.8	9.8	9.8	9.8	9.8	9.8
Awning Length	15' - 6"	18'	18'	14'	15' - 6"	16'	18'	16'
Water Heater (Gal.)	6	6	6	6	6	6	6	6
Exterior Storage (Cu. Ft.)	61	50	50	62.5	101.7	78	81.8	81.8

PAINT OPTIONS

STANDARD Exterior



OXFORD Full body paint



TOPAZ Full body paint



SUNSEEKER

BY FOREST RIVER

NOW PREWIRED FOR SOLAR ON THE SIDE*

POWERFUL SOLAR CHARGING KIT

- Freedom to explore off-grid locations
- High-efficiency 100 watt monocrystalline solar panel
- Expandable up to 500 watts
- Low-profile panel, invisible from the road

DIGITAL SOLAR CONTROLLER

- Produces more charging power
- Displays solar charge and battery capacity

SOLAR ON THE SIDE PORT

- Pre-wired for a portable solar kit. Simply plug in an 80 or 120-watt portable solar kit!



WHY GO SOLAR?



SAVINGS
Extends battery life by 50%



ZERO FUEL
No generator required to run



QUIET
Alternative to generators



RENEWABLE
and safe power source



SOLAR ON THE SIDE™ solar connection

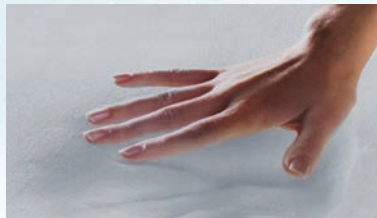
* Optional SOLAR ON BOARD upgrade is available



Large panoramic windows with black-out shades for plenty of fresh air and natural light.



12V 4-Port USB charging station (Living room/bedroom, N/A LE)



Sunseeker is equipped with a residential mattress for a good night's sleep.



Seamless front cap for enhanced aerodynamics



Solar Prep



LED lights generate almost no heat compared to incandescent lights and use substantially less power.



Winterizing tube provides easy access for quick maintenance includes bypass valve.



The overhead bunk is rated for 440 lbs. and includes a cab over safety net



Outside speakers

This compact unit filters water for the entire coach, eliminating unwanted contaminants and odors, ensuring safe drinking water for you and your family. (N/A LE)



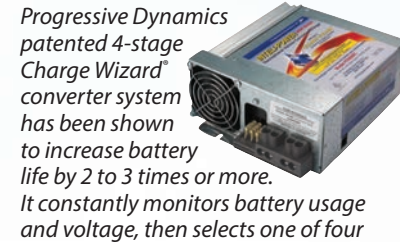
Sunseeker is appointed with rich residential style hardwood cabinetry with ball bearing drawer glides



Two batteries in a single housing for easy access. (One battery LE and Transit)



This Winegard HD digitally amplified antenna enhances reception.



Progressive Dynamics patented 4-stage Charge Wizard™ converter system has been shown to increase battery life by 2 to 3 times or more. It constantly monitors battery usage and voltage, then selects one of four operating modes to properly charge and maintain the battery. Boost, Normal, Storage and Equalization.

This holding tank vent cap eliminates odors and gases from the holding tanks and exhausts them out the roof, without the use of costly chemicals.





Durable, easy to clean (R-18) crowned fiberglass roof sheds water and doesn't cause black streaks like a rubber roof.



Heated/enclosed holding tanks use warm air from the furnace to protect tanks and valves. (N/A 2250 SLE, MBS and Transit)



All models include Atwood ducts for high performance air flow throughout the coach and front cabover.



Sunseeker's entry step is integrated into the sidewall. No more slippery, or damaged power steps. (N/A MBS)



Comfortable sofa with footrests, folding armrests and drink tray converts to a convenient sleeping area.



Extend and retract the power awning with the push of a button. Both arms are adjustable to get just the right angle.



Maxx Air Fan recirculates air throughout the entire coach.



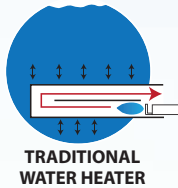
The Sony touch screen in-dash stereo system pairs up with your smart phone for access to Apple CarPlay/Android GPS and other applications. (N/A on Transit or LE)



This multimedia entertainment system features AM/FM/DVD, Bluetooth, plus outside speaker control.

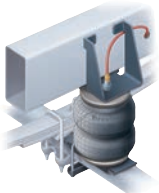


7,500 Lb. Tow capacity (Ford E450)



Atwood 18 GPH water heaters (6 gallon tank) out perform traditional 10 and 12 gallon tank water heaters. They're also 50% lighter and have no anode rod to replace.

Firestone Ride-Rite Advantages include adjustable air springs provide an improved ride, and a better way to balance loads



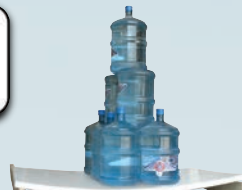
SUNSEEKER VS. THE COMPETITION



SUNSEEKER
2" Wall with Block Foam and SuperLite (R-10)

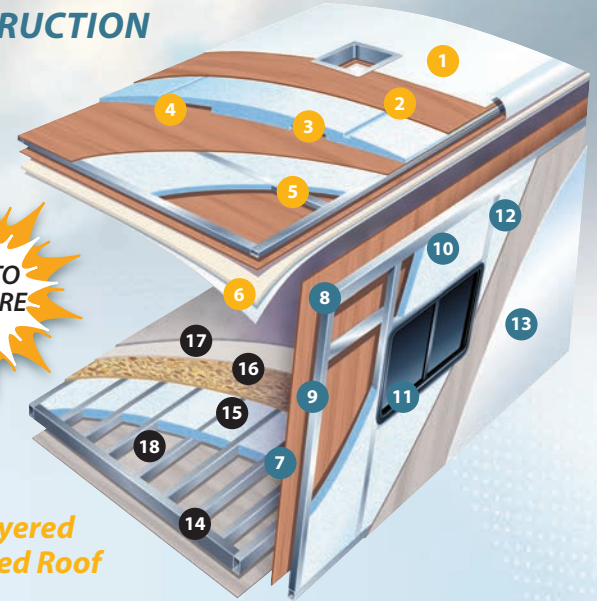


SUPER LITE WALLS
All models use SuperLite composite instead of a wood substrate on the sidewalls. It is lightweight, formaldehyde free and is not affected by moisture.



COMPETITION
1.5" Wall with Luan (R-6)

CONSTRUCTION



Multi-Layered Laminated Roof System

- 1. Crowned Fiberglass Roof
- 2. Luan Decking
- 3. Block Foam Insulation
- 4. A/C Ducts
- 5. Tubular Aluminum Framing
- 6. Interior Ceiling Material

Vacuum-Bond Laminated Sidewalls

- 7. Decorative Interior Wall Board
- 8. Tubular Aluminum Framing
- 9. EGS Metal Backers
- 10. Block Foam Insulation
- 11. Opening Framed In Aluminum
- 12. Lightweight Composite Waterproof Material
- 13. Gelcoat Fiberglass Exterior

Vacuum-Bond Laminated Floor System

- 14. Fiberglass Bottom Board
- 15. Block Foam Insulation
- 16. Seamless Floor Decking
- 17. Resilient Shaw Floors Throughout
- 18. Aluminum Framing



INTERACTIVE MOBILE MANUALS

Download our mobile app or visit our dynamic online manual to enhance your ownership experience. These interactive options provide incredible ease and insight into use, maintenance and enjoyment of your Sunseeker product. Ranging from "How-To" videos, pictures and illustrations of various components, systems and features, to fully searchable content and downloadable PDFs for individual component owner's manuals, answers are always just a click away. View the online manual at www.forestriverinc.com/ownersmanuals, or download our FREE app from the App Store or GooglePlay!



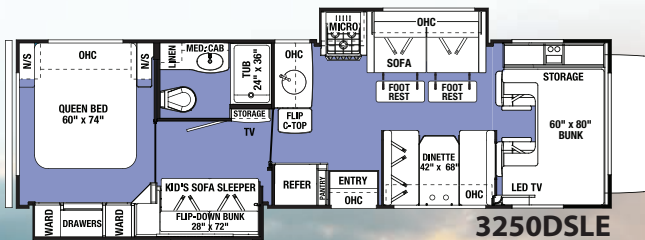
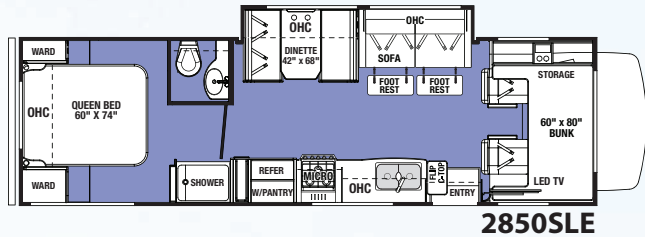
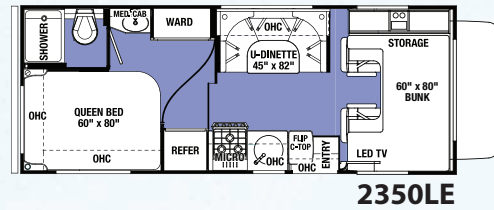
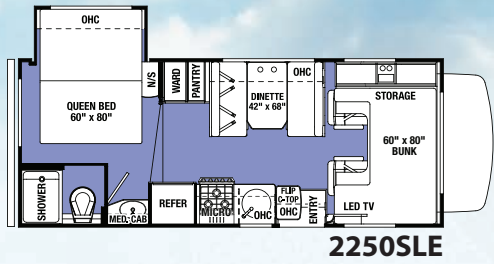


2250SLE Shown in Stone Decor with optional Weathered Teak cabinetry

LE SERIES TOP FEATURES

- Fiberglass front cap
- Crowned fiberglass roof
- Fiberglass underbelly
- Fiberglass enclosed slides
- Cab-over safety net
- Cab-over curtain
- Cab-over A/C vent
- Two cab-over windows
- 40" 12V LED TV
- 2" Thick sidewalls
- Heated enclosed tanks (N/A 2250SLE)
- Pass through storage
- Enclosed dump station
- Enclosed house battery
- One-piece pressed countertop
- Upgraded stainless steel appliances with 1.3 cu. ft. microwave
- Two large storage drawers in dinette
- Dinette child tethers
- Sofa foot rest
- Kid zone with seat belts (3250DSLE)
- Whole house entertainment
- Outdoor speakers
- Progressive Dynamics convertor with Quick Recovery
- Integrated step
- Pillow top mattress
- MCD Black-out roller shades
- Spare tire
- Lightweight substrate insulation





2250SLE Shown in Stone Decor with optional Weathered Teak cabinetry

Ford • Chevy	2250SLE	2350LE	2850SLE	3250DSLE
Wheelbase	158" • 159"	158" • 159"	220"	220"
GVWR	14500 • 14200	14500 • 14200	14500	14500
GAWRR	9600 • 9600	9600 • 9600	9600	9600
GAWRF	5000 • 4600	5000 • 4600	5000	5000
UVW	10550 • 10590	10100 • 10130	11742	12580
GCWR	22000 • 20000	22000 • 20000	22000	22000
CCC	3950 • 3610	4400 • 4070	2758	1920
Fuel Capacity (Gal)	55 • 57	55 • 57	55	55
Hitch Rating	7500/500 • 5000/500	7500/500 • 5000/500	7500/500	7500/500
Length - Bumper To Bumper	23' - 10" • 24' - 4"	24' - 6" • 25'	31' - 5"	32' - 3"
Exterior Height With A/C	11' - 3"	11' - 3"	11' - 3"	11' - 3"
Exterior Width	101"	101"	101"	101"
Interior Width	95.5"	95.5"	95.5"	95.5"
Interior Height Frt/Rear	84"/77"	84"/77"	84"/77"	84"/77"
Fresh/Grey/Black Water (Gal)	35/32/27	44/39/39	44/39/39	44/39/39
L.P. Capacity (Gal)	9.8	9.8	9.8	9.8
Awning Length	14'	15' - 6"	15' - 6"	11'
Water Heater (Gal)	6	6	6	6
Exterior Storage (Cu. Ft.)	32	61	102	80



3250DSLE with Kid's Sofa Sleeper/Flip-down Bunk shown with optional Rustic Cherry cabinetry.

MERCEDES-BENZ® SERIES
The quality you've come to expect,
paired with a fuel efficient
diesel platform.



Mercedes-Benz

MBS SERIES TOP FEATURES

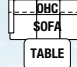
- Lane departure warning system
- Swivel driver and passenger seats with booster seat cushions and removable table
- Trekker cap option with built-in entertainment center and storage IPO overhead bunk
- Adjustable, electric awning with LED light strip
- Crowned fiberglass roof
- Water filtration system
- Standard side view and back-up camera
- Front cab magnetic black-out shades enhance privacy
- Hellwig sway bar
- CarPlay/Android Play Sony® stereo
- Upgraded stainless steel appliances with 1.3 cu. ft. microwave
- Gel coat sidewalls with SuperLite composite
- Optional diesel generator
- Slide out awning toppers
- Optional 100W solar powered 12V charging system

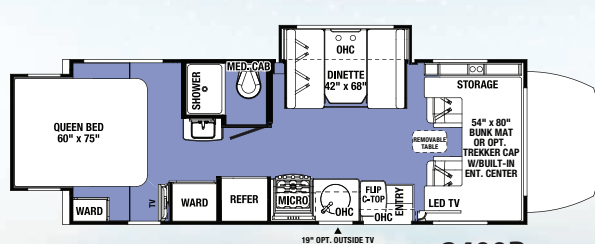
Sunseeker MBS	2400R	2400S	2400W
Wheelbase	170.3	170.3	170.3
GVWR	11030	11030	11030
GAWRR	7720	7720	7720
GAWRF	4080	4080	4080
UVW	9944	9809	9924
GCWR	15250	15250	15250
CCC	1086	1221	1106
Fuel Capacity (Gal)	26.4	26.4	26.4
Hitch Rating	4200/350	4200/350	4200/350
Length - Bumper To Bumper	24' - 11"	24' - 8"	24' - 11"
Exterior Height With A/C	11' - 3"	11' - 3"	11' - 3"
Exterior Width	94.5"	94.5"	94.5"
Interior Width	91"	91"	91"
Interior Height Frt/Rear	81"/74"	81"/74"	81"
Fresh/Grey/Black Water (Gal)	35/30/30	35/33/33	35/32/32
L.P. Capacity (Gal)	16.6	16.6	16.6
Awning Length	16'	15' - 6"	15' - 6"
Water Heater (Gal)	6	6	6
Exterior Storage (Cu. Ft.)	75	67	50.3



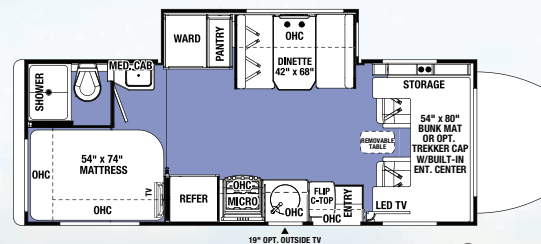
2400R Shown in Hazelnut Decor with optional Weathered Teak cabinetry



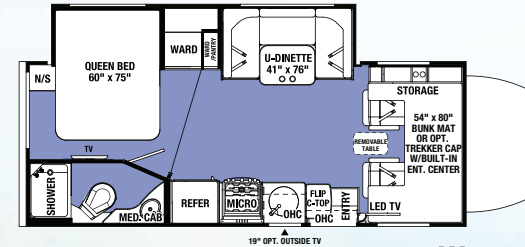
OPTION  OPT. SOFA
2400R, 2400S,
2400W



2400R



2400S



2400W

BLUETEC DIESEL ENGINE
BlueTec SCR Technology is one of the world's cleanest diesel engines, delivering more power, while producing fewer emissions. The 3.0l V-6 engine boasts 188 hp and 325 lb-ft of rated torque.

Lane Departure Warning System

- NEW Voyager® VBSD1 Blind Spot Detection System
- Specifically engineered to enhance Class C motorhome safety
- Visual and audible alerts warn drivers of obstacles not visible in the rear view mirror
- Uses radar detecting sensors on the rear corners of the motorhome that communicate with LED beacons in the cab
- Beacons remain lit until the blind spot is clear
- Beacon flashes with an audible alert when turn signal is engaged



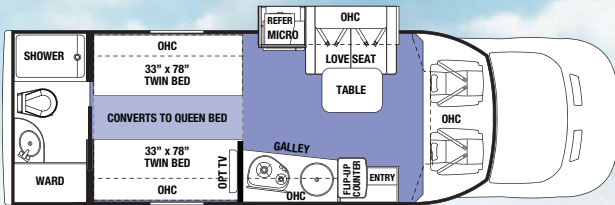
Standard swivel seats and booster cushions.



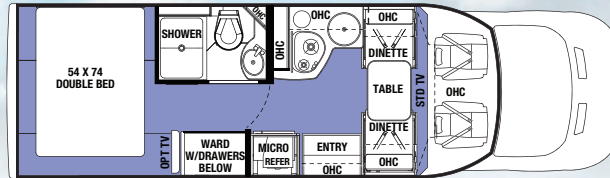


TRANSIT SERIES

Ultra-light weight and fuel efficient.



TS2370 Diesel only



TS2380 Gas or diesel

TS SERIES TOP FEATURES

- Engineered for fuel efficiency
- Ultra-light, eco-friendly building materials
- Class-leading pass-through storage
- Residential style cabinetry
- 12V LED TV
- Gas and diesel engines available (TS2370 Diesel only)
- 5.3 Cu. ft. Eurostyle refrigerator operates on 12V/110/LP
- All enclosed bathrooms with privacy door (No wet baths)
- Passenger swivel seat
- Back-up and side view cameras
- Power awning with LED light strip
- Interior surround sound entertainment system
- Exterior speakers
- Truma Combi electric heat and high efficiency water heater
- TS2370 Includes power twin beds that convert into a queen size bed

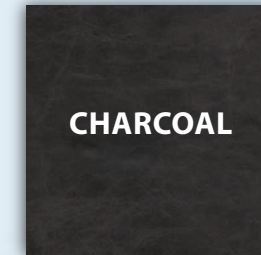
Sunseeker TS	TS2370	TS2380
Wheelbase	178	178
GVWR	10360	10360
GAWRR	7275	7275
GAWRF	4130	4130
UVW	8714	8145
GCWR	13500	13500
CCC	1646	2215
Fuel Capacity (Gal)	25	25
Hitch Rating	-	-
Length - Bumper To Bumper	26' - 1"	25' - 6"
Exterior Height With A/C	10' - 5"	10' - 5"
Exterior Width	87"	87"
Interior Width	84"	84"
Interior Height Frt/Rear	78"	78"
Fresh/Grey/Black Water (Gal)	35/30/28	35/30/30
L.P. Capacity (Gal)	9.8	9.8
Awning Length	15'	15"
Water Heater (Gal)	2.5	2.5
Exterior Storage (Cu. Ft.)	30.5	29

The ultra-light Sunseeker TS is engineered for fuel efficiency with eco-friendly building materials.



Transit Series is available in Charcoal decor only.

DECOR



WARRANTY	SS	GTS	MBS	LE	TS
12 Months/12,000 mile basic limited warranty	S	S	S	S	S
Chassis warranty (see owners manual)					
SYSTEMS	SS	GTS	MBS	LE	TS
Battery disconnect	S	S	S	S	S
Water heater bypass	S	S	S	S	S
(2) Deep cycle coach batteries (1 battery in LE and Transit)	S	S	S	S	S
"Easy Access" battery in step-well	S	S	S	S	S
30 Amp service with detachable cord	S	S	S	S	S
60 Amp Progressive Dynamics converter	S	S	S	S	S
6 Gallon DSI gas/electric water heater	S	S	S	S	—
30,000 BTU furnace	S	S	S	S	—
Truma Combi water heater/furnace	—	—	—	—	S
Emergency start switch	S	S	—	S	S
Satellite/cable connection	S	S	S	S	S
13,500 BTU ceiling ducted roof air	S	S	S	S	S
4.0 KW Onan Microquiet generator	S	S	—	S	—
3.6 KW Onan LP generator	—	—	S	—	—
2.8 KW Onan gasoline generator (Gas Transit only)	—	—	—	—	S
2.5 KW Onan LP generator (Diesel Transit only)	—	—	—	—	S
Automatic generator transfer switch	S	S	S	—	S
Firestone Ride-Rite air helper springs	S	S	—	—	—
Hellwig sway bar	—	—	S	—	—
Water filtration system	S	S	S	—	S
Heated, enclosed holding tanks and valves (N/A 2250SLE)	S	S	—	S	—
Arctic Package (12V tank heaters)	O	O	S	O	O
15K BTU A/C with heat pump	O	O	O	O	—
CO ₂ LP and smoke detector	S	S	S	S	S
Jack digital antenna	S	S	S	S	S
EXTERIOR	SS	GTS	MBS	LE	TS
2" Aluminum framed laminated sidewalls	S	S	—	S	—
1.5" Aluminum framed laminated sidewalls	—	—	S	—	S
Azdel Superlite composite substrate	S	S	S	S	S
Gel Coat exterior fiberglass	S	S	S	S	S
Block foam insulation	S	S	S	S	S
Power patio awning with LED light strip	S	S	S	S	S
Slide-out awnings	S	S	S	—	S
Fiberglass roof	S	S	S	S	S
One-piece fiberglass front cap	S	S	S	S	S
LED exterior lights	S	S	S	S	S
Stainless steel wheel liners	S	S	S	S	S
Valve stem extensions	S	S	S	—	—
Roto-cast storage compartments	S	S	S	S	S
Driver side security light	—	—	S	—	—
Aluminum running boards	S	—	—	O	—
Fiberglass running boards	—	S	S	—	S
110V, GFI protected exterior receptacle	S	S	S	S	S
Tinted sliding windows	S	—	—	S	—
Tinted frameless windows	—	S	S	—	S
Heated, remote exterior mirrors	S	S	S	—	—
7,500 Lbs. hitch, 7-pin connector (E450)	S	S	—	—	—
5,000 Lbs. hitch, 7-pin connector (Chevy/E350)	S	S	—	S	—
4,200 Lbs. hitch, 7-pin connector	—	—	S	—	—
Spare tire	S	S	S	S	S
Roof ladder (N/A 2400R)	S	—	S	S	—
Integrated entry step	S	S	—	S	S
Power entry step	—	—	S	—	—
Automatic leveling system (4-point) (N/A on Chevy)	O	O	—	O	—
Stabilizer jacks (2-point)	—	—	S	—	—

EXTERIOR	SS	GTS	MBS	LE	TS
LP quick connect	S	S	S	—	S
Full body paint	O	O	O	—	O
Outside shower	S	S	S	—	S
Outside 12V LED TV (See floorplans)	O	—	O	—	—
Black tank flush	S	S	S	—	S
CAB AREA	SS	GTS	MBS	LE	TS
7" Touch screen radio with USB and Bluetooth	S	S	S	S	—
Cab area privacy curtain	S	S	—	S	S
Magnetic privacy shades	—	—	S	—	—
Ultra leather driver and passenger seats	S	S	S	—	S
Power windows and door locks	S	S	S	S	S
Keyless entry (N/A Chevy)	S	S	S	S	S
Color back-up camera	S	S	S	S	S
Side view cameras	S	S	S	—	S
Removable cab mat	—	—	S	—	—
Swivel driver seat (N/A Chevy, Power)	O	O	S	—	—
Power driver seat (Ford only)	O	O	—	—	—
Swivel passenger seat (N/A Chevy)	O	O	S	—	—
KITCHEN	SS	GTS	MBS	LE	TS
Recessed 3-burner range with flush glass cover	S	S	S	S	—
Range hood with fan and light	S	S	S	S	—
Oven IPO drawer	—	—	O	—	—
Microwave oven	S	—	—	S	—
Convection microwave	O	S	S	—	S
6 Cu. ft. double door refrigerator	S	S	S	S	—
12 Cu. ft. four door refrigerator (2860DS, 3010DS, 3050S, 3270S)	O	—	—	—	—
Sink covers	S	S	S	—	S
5.3 Cu. ft. lightweight LP/Electric 110V Refrigerator	—	—	—	—	S
Raised wood refrigerator panel (N/A 12 cu. ft.)	S	S	S	—	—
Full extension ball bearing drawer guides	S	S	S	S	S
Flip-up countertop extension	S	S	S	S	—
BATHROOM	SS	GTS	MBS	LE	TS
Lightweight composite toilet with hand sprayer	S	S	S	S	S
Glass shower door	S	S	—	—	—
Lightweight Arcadia shower door	—	—	S	S	—
Towel bar, tissue, toothbrush and soap holder	S	S	S	—	S
Electric roof fan	S	S	S	S	S
Shower head with flexible extension	S	S	S	S	S
Shower skylight	S	S	S	S	S
BEDROOM	SS	GTS	MBS	LE	TS
Upgraded memory foam mattress	S	S	S	S	S
Bedsprad (N/A TS2370)	S	S	S	S	S
Black-out roller shades	S	S	S	S	—
Bedroom TV	O	O	O	—	O
LIVING ROOM	SS	GTS	MBS	LE	TS
Dream dinette (N/A with U-shape dinettes)	S	S	S	—	—
Visionary pull out sofa (60" x 74") (3010DS)	S	—	—	—	—
12V LED flat panel adjustable side TV	S	S	S	S	S
Child seat head tethers in dinette	S	S	S	S	—
Maxx Air fan in living room	S	S	S	—	S
LED lighting throughout	S	S	S	S	S
12V USB charging station	S	S	S	—	S

For more information please visit: www.forestriverinc.com/sunseeker
 914 CR 1 • Elkhart, In 46514 • 574.262.2212 • 800.445.2825



PRE-DELIVERY INSPECTION FACILITY

20,000 square feet of quality assurance. The bare essentials for a premium product. This state-of-the-art facility gives immediate daily feedback to production for quality assurance in every unit built.

24/7 EMERGENCY ROADSIDE ASSISTANCE WITH VEHICLE PURCHASE*

TOWING JUMP-STARTS TIRE CHANGES FLUID DELIVERY LOCKOUT SERVICE	WINCH-OUT MOBILE MECHANIC TECHNICAL SUPPORT DEALER LOCATOR SERVICES
---	--

*VALID FOR 1 YEAR FROM DATE OF PURCHASE

Learn More
Scan this barcode using a QR Reader on your smart phone to learn more about Forest River.

A Berkshire Hathaway company.

All information contained in this brochure is believed to be accurate at the time of publication. However, during the model year, it may be necessary to make revisions and Forest River, Inc., reserves the right to make all such changes without notice, including prices, colors, materials, equipment and specifications as well as the addition of new models and the discontinuance of models shown in this brochure. Therefore, please consult with your Forest River dealer and confirm the existence of any materials, design or specifications that are material to your purchase decision. ©2018 Sunseeker - a Division of Forest River, Inc. - a Berkshire Hathaway Company 5/19



www.ForestRiverBuyLocal.com

Your Local Sunseeker Dealer