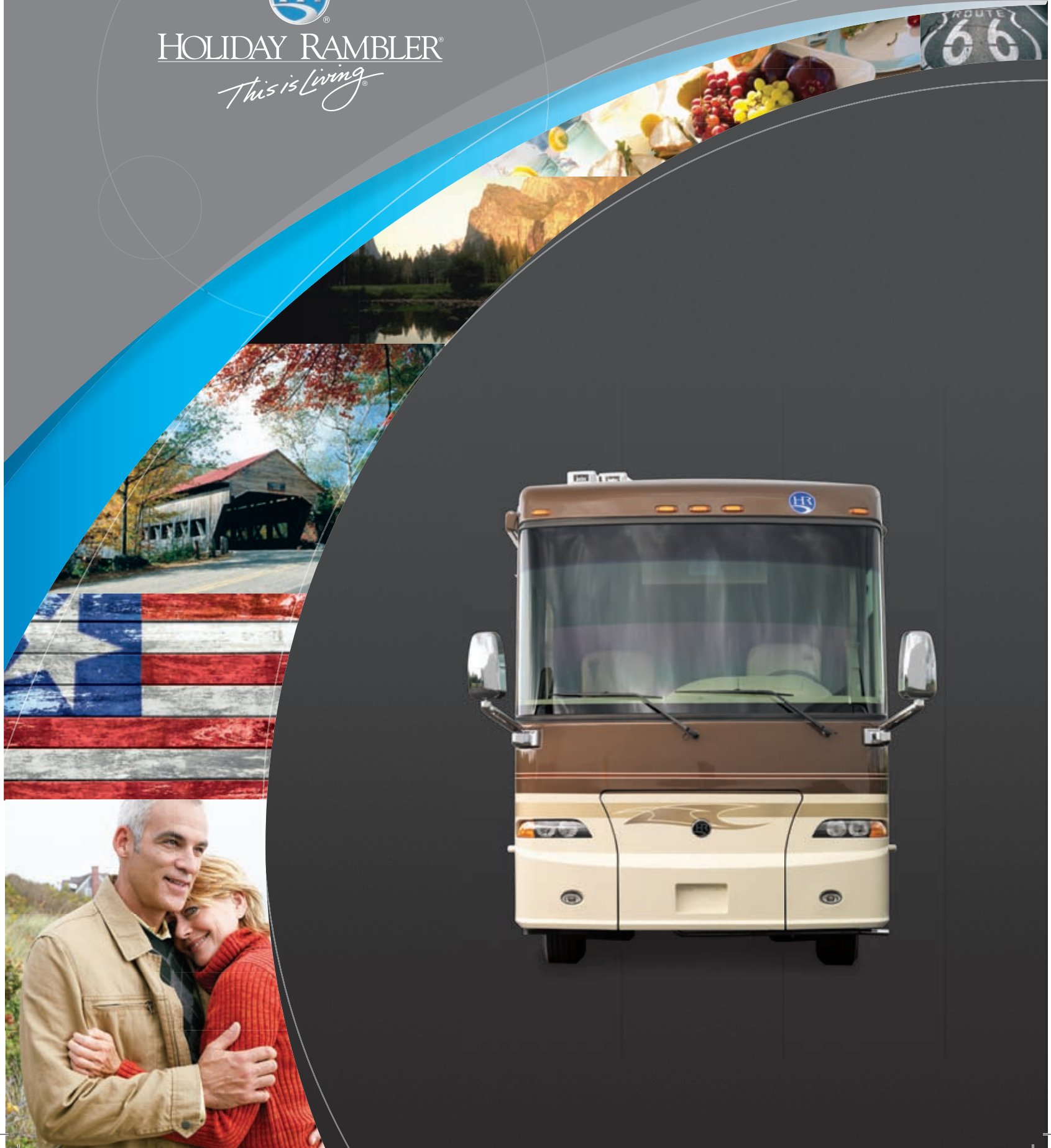


SCEPTER®
2008



HOLIDAY RAMBLER®

This is Living®



HR SCEPTER®



This is Living®





42 PDQ | RASPBERRY TRUFFLE | NATURAL CHERRY

COZY UP TO SCEPTER'S UNMISTAKABLE STYLE.

From the moment you step onboard, it becomes clear – the 2008 Scepter has a style all its own. Roomy and powerful, the Scepter somehow manages to be as charming as it is sophisticated. Maybe it's the artful exteriors with newly designed, colorful graphics and contemporary rear caps for a polished look. Or perhaps it's the interior with upscale touches such as tile floors

and a home theater system. Then again, it could be the inviting furniture that's now available in leather. Or, possibly all the amenities that make life on the road more comfortable. But we do know one thing for sure. If you're ready for an RV that truly stands apart from all the others, it's time to step up to Scepter.





42 PDQ | RASPBERRY TRUFFLE | NATURAL CHERRY

WARM UP TO CAREFREE LIVING.

Creating delicious meals is far from a chore in this splendid kitchen. The smart layout puts everything right where you need it. If you need a bit more space, simply roll out the handy countertop extension. Meals come together in no time using the high-output cooktop and Spacesaver convection microwave. And, you can keep your cool with the standard Norcold® 12-cubic-foot refrigerator or the optional dometic sidewise 14-cubic-foot model with water and ice dispenser in the door — both are available in stainless steel.

Bring along all those handy kitchen gadgets. There's more than enough room with plentiful cabinets and a pantry. Enjoy your culinary creations on the new dinette ensemble that stores neatly away when not in use. Or, add a sectional booth dinette ensemble if that's more your style. And speaking of style, you can keep your clothes looking their best throughout your travels with the addition of a combination or stackable washer/dryer that's ingeniously hidden behind yet another beautifully finished wood cabinet.





42 PDQ | RASPBERRY TRUFFLE | NATURAL CHERRY

WIND DOWN TO TOTAL RELAXATION.

Everything about Scepter's bedroom says "relax." It begins with the comforting styling, complete with a coordinating bedspread. At the end of the day, climb in the bed and switch on the reading lights above the decorative headboard for nighttime reading. Or turn out the lights and enjoy a movie on the 20" wall-mounted LCD television. During the day, simply pull down the day/night pleated shades to create the perfect atmosphere for an indulgent afternoon nap. All your belongings fit neatly into the dresser,

the oversized rear closet or the indispensable nightstands. Adjacent to the bedroom is the spacious bath complete with a one-piece shower or pear-shaped tub, depending on the model. For 2008, we added a decorative chair rail, ornamental tile on the wall and sophisticated ceramic tile on the floor throughout. We've even tried to make cleaning up a bit more relaxing with the option of a central vacuum system that's easier to use and store than traditional vacuums.



◆ PANAVIEW™

1-PIECE WINDSHIELD

This is Living®



42 PDQ | RASPBERRY TRUFFLE | NATURAL CHERRY

Power. Security. Comfort. Entertainment. Scepter combines them all to create the ultimate driving experience. The automotive dash with a metallic instrumentation panel grabs your attention right away. The equally attractive lighted VIP Smartwheel® puts controls literally right at your fingertips and helps make Scepter easy to drive, along with cruise control, adjustable pedals and color rear vision system. The optional GPS system keeps you on track while the Aladdin, Junior video monitoring system tracks vital engine functions. A cool standard feature is the

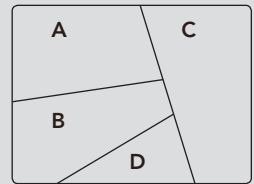
REV UP YOUR ENGINE.

Panaview™ 1-Piece Windshield, which gives you an unobstructed view of the road. While on the road, stay comfortable in the Ultraleather™ six-way power seats. They also make a great place to enjoy a movie on the standard 32" flatscreen LCD TV in the cockpit overhead. Anything you need to make your ride even better can be stored easily in the Ozite lined pass-through storage compartments with an optional slide-out tray. Just another feature in the long list of reasons why Scepter will keep revving you up for years to come.

MAKE UP YOUR MIND.

Deciding which color, fabrics and wood you want can be a little tricky. This year, the exteriors have been overhauled with new colors and graphics. The fabric choices have been refreshed with contemporary choices. And, the wood cabinetry has been redesigned with new door profiles and increased height. As you make up your mind, just remember that whatever you choose is sure to look absolutely stunning in your 2008 Scepter.

- A. BEDSPREAD
- B. SOFA
- C. ACCENT
- D. CARPET



RASPBERRY TRUFFLE



SAND FOSSIL



**BETTER
STAIN
PROTECTION**

Manufactured in, not added on. For added protection against stains, soil repellent is applied to virtually all upholstery fabric during the finishing process for superior coverage.*

*Brand and application of upholstery fabric protection may vary depending on date recreational vehicle was manufactured.



NATURAL OAK



STAINED OAK



NATURAL CHERRY



STAINED CHERRY



SPICED MAPLE



SATIN SABLE

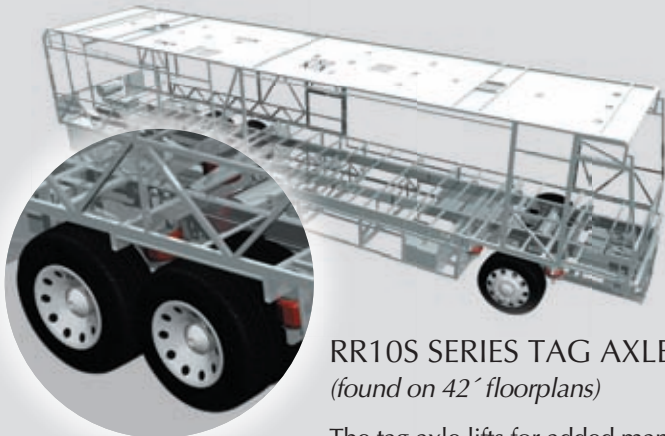


MOONFLOWER II



ROADMASTER R-SERIES CHASSIS

Thanks to the Roadmaster RR8S Series chassis — and the RR10S Series for our 42-foot models — the 2008 Scepter delivers the very best performance in its class. That's because these custom-built chassis are designed to the highest standards for a luxury motorcoach and follow the exact specifications of each floorplan. You'll enjoy the smoother ride, superior front-to-rear balance and many other sophisticated features. We invite you to take a few minutes and discover all the ways Roadmaster offers you the finest in safety, reliability, comfort and convenience.



RR10S SERIES TAG AXLE
(found on 42' floorplans)

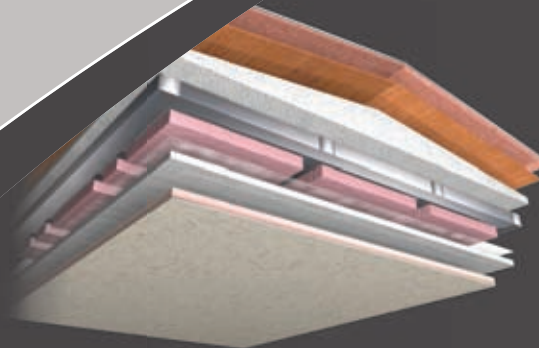
The tag axle lifts for added maneuverability in tight spots. It's just one more great feature from Holiday Rambler that adds to your coach's overall performance and most importantly, your safety.

- 1** Equipped with a steel firewall for added safety.
- 2** The main rails feature an exclusive raised rail design which provides for larger full pass-through storage bays with flush floors. Other highlights include a 3/8" thick frame rail — compared to the 1/4" of other manufacturers — and a stacked aluminum intercooler and radiator for optimum heat transfer and cooling.
- 3** The power steering box allows for a 50-degree front wheel turn angle in both directions for better maneuverability and returns the steering wheel back to its center position to eliminate driver fatigue.
- 4** Eight outboard-mounted air bags work in conjunction with gas-powered shock absorbers to prevent road trauma from ever reaching the coach.
- 5** Three monitored leveling sensors (two in the rear, one in the front) continually adjust the air pressure within each air bag to maintain a level ride and eliminate nosediving, weight transfer and floating on curved roads. This system also stabilizes the coach side to side on uneven roads and while maneuvering through curves.
- 6** Truss System with Rust Inhibitor: This steel truss system is engineered as part of the chassis and provides outstanding strength and rigidity plus pass-through storage. In addition, the structure is pre-primed and coated with a rust-inhibiting paint.

9-LAYER ROOF CONSTRUCTION

(top to bottom)

- Seamless one-piece crowned smooth gel coat fiberglass roof
- Luaun backing
- 2-1/2" thick, tapered bead foam insulation
- 1-1/2" x 3" aluminum I-beam superstructure on 16" centers is filled with 3" fiberglass insulation
- Vapor barrier
- Structure foam: thermal insulative barrier
- 1/2" bead foam insulation
- Foam padding for extra insulation
- Padded vinyl ceiling



7 Dual fuel fill allows you to fill the tank from either side of the coach, for greater convenience and flexibility at the pump.

8 The aluminum fuel tank is lightweight and resists corrosion, unlike steel tanks.

9 Air Bags and Shocks: The Cushion Air Glide suspension system with eight outboard-mounted air bags and eight gas shock absorbers combines with ride height sensors (two in rear, one in front) to deliver better ride and handling.

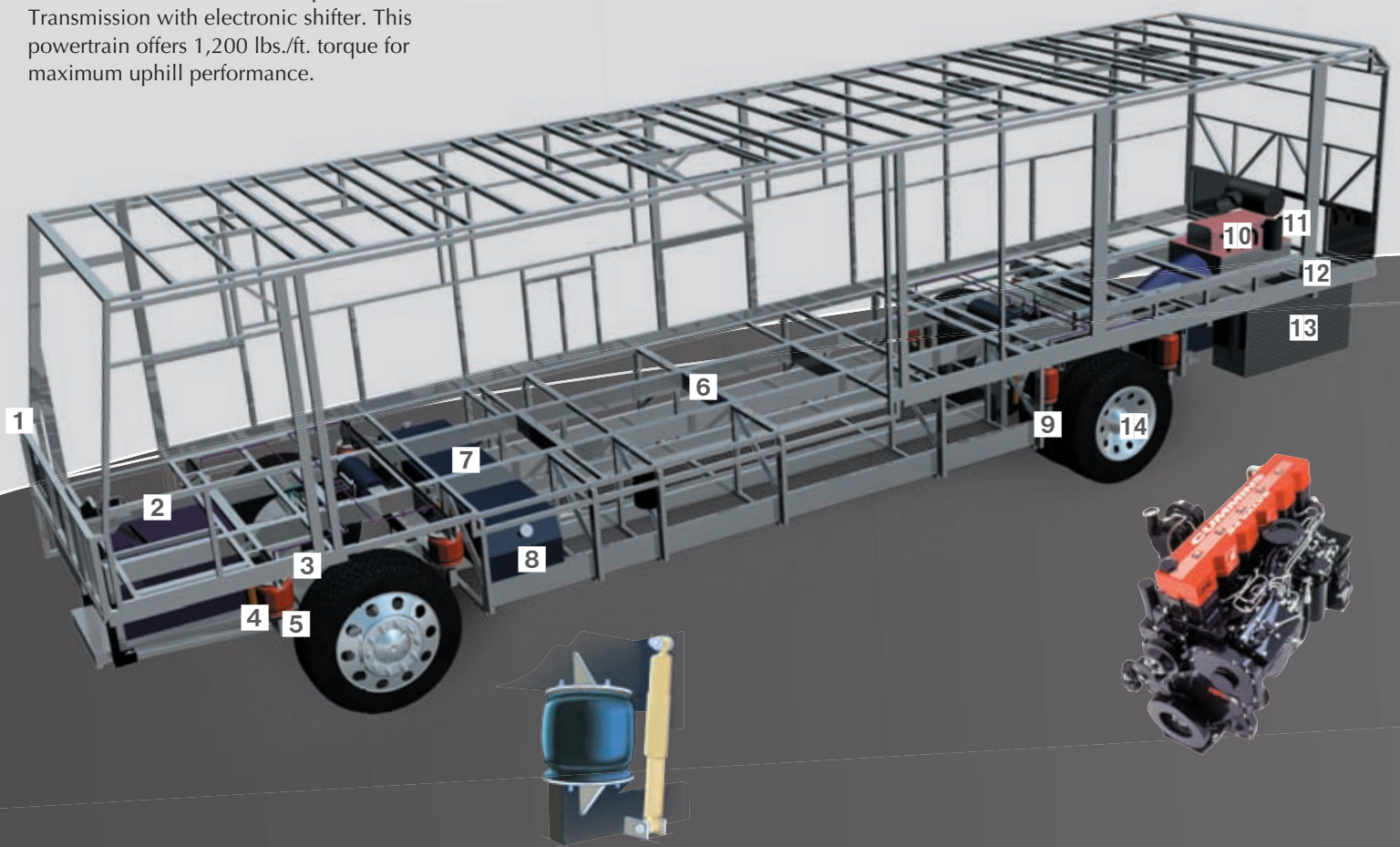
10 Cummins® ISL 400 Diesel Engine: You'll enjoy the peerless performance of the Cummins® ISL 400 electronic engine and the Allison® 3000 MH 6-speed World Transmission with electronic shifter. This powertrain offers 1,200 lbs./ft. torque for maximum uphill performance.

11 A 10,000 lb. tow hitch rating is the highest in its class.

12 Engine Mounting: The three-point engine mounting system lowers the coach's center of gravity and reduces the amount of vibration that reaches the coach. The mounting also makes the engine easier to service by allowing the engine to be easily lowered through the bottom of the coach.

13 The side-mounted aluminum radiator and intercooler reduce weight, are rust-resistant and deliver better heat transfer than steel cooling components.

14 Automatic Traction Control (ATC) eliminates wheel slippage in slick conditions and heightens control. The Anti-Lock Braking system (ABS) gives you superior stopping power, especially on steep grades. Together, these sophisticated systems offer the very best safety on the road.



5-LAYER SIDEWALL CONSTRUCTION

(left to right)

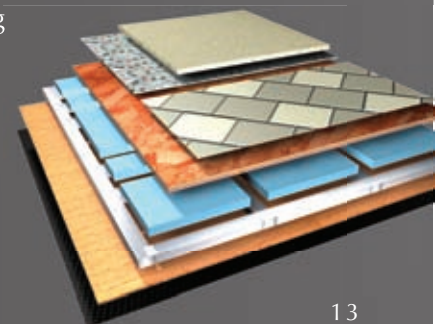
- High-gloss gel coat fiberglass
- 1-1/2" thick Dow Structure Foam® insulation
- 1-1/2" x 1-1/2" square tubular aluminum frame
- 1/8" luaun
- Wallpaper



6-LAYER FLOOR CONSTRUCTION

(top to bottom)

- Carpet pad and carpeting or tile
- Structurwood™
- 1-1/2" Dow Structure Foam® insulation
- 1-1/2" x 1-1/2" square tubular frame
- 1/8" luaun
- Waterproof Darco underbelly



BODY CONSTRUCTION: FEATURES

- Aluminum Superstructure
- Seamless One-Piece Molded Crowned Fiberglass Roof
- Interior Height 84"
- Foam Insulated Floor Framing with 3-Ply Underbelly
- Laminated Smooth Gel Coat Fiberglass Exterior Walls
- Front Molded Fiberglass Cap
- Rear Molded Fiberglass Cap with Integrated Air Intake
- Panaview™ 1-Piece Front Windshield
- One-Piece Generator Access Door
- Electric Flush-Mounted Stepwell Cover
- Aluminum Framed Laminated Floor on Steel Trusses
- Laminated Structurwood™ Flooring
- Dual Head Power Controlled Heated Exterior Mirrors with Turn Indicator Lights
- Docking Lights
- Side-Hinged Baggage Doors with Chrome Door Latches
- 3M Film Front Mask
- Full-Length Holiday Rambler Mud Flap
- Storage Bay Slide-Out Tray, Pass-Through (Bay 3)
- Ozite Lined Pass-Through Storage Compartments
- Flush-Mounted Metal Fuel Doors
- Deluxe Full-Body Paint
- Roof Ladder
- Undercoating

OPTIONS

- Super Savings Package: 3-Camera Rear Vision System with Audio and Adjustable Center Camera, Aladdin™ Jr., Solid Surface Kitchen Sink, Auto Generator Start, RV Sani-Con Tank Drainage System, Water Hose Reel, Power Cord Reel
- Storage Bay Slide-Out Tray, Pass-Through (Bay 4)

CHASSIS/ENGINE/SUSPENSION: FEATURES

- Roadmaster RR8S - Series Chassis (40PDQ)
- Roadmaster RR10S - Series Chassis (N/A: 40PDQ)
- Cummins® ISL 400 Diesel Engine with Allison® 3000 MH 6-Speed World Transmission and Electronic Shifter
- Torque (@ 1,300 RPM) 1,200 lbs./ft. Max. Net
- Engine Displacement 540~8.9L
- Aluminum Side-Mounted Radiator with CAC Cooler
- Dual Fuel Fill
- 160 Amp Alternator
- Rear Axle Ratio: 4.30:1
- Tires 295/80R/22.5
- Polished Aluminum Wheels
- Cushion Air Glide Suspension with Eight Outboard-Mounted Air Bags and Eight Shock Absorbers (40PDQ)
- Cushion Air Glide Suspension with Ten Outboard-Mounted Air Bags and Ten Shock Absorbers (N/A: 40PDQ)
- Anti-Lock Braking System with Front Disc Brakes and Rear Drum Brakes
- Tag Axle with Anti-Lock Braking System (N/A: 40PDQ)
- Automatic Traction Control
- Exhaust Brake
- Auto Slack Adjusters on Brakes
- Prewire for Supplemental Braking System
- Engine Block Heater
- Automatic Leveling System (3 Point)
- 10,000 Lb. Hitch Receiver with Dual Connector 4/7-Pin

OPTIONS

- Air Leveling System (Replaces Standard Hydraulic Levelers)

COCKPIT: FEATURES

- Automotive Dash with Starburst and Silver Graphite Metallic Instrumentation Panel
- Color Rear Vision System with Audio and Adjustable Camera
- In-Dash AM/FM/CD Stereo Radio with Sirius-Ready Compatibility and Weather Band
- CB Prep with Antenna
- Power Sunvisors
- Adjustable Brake and Accelerator Pedals
- Lighted VIP Smartwheel® Multiplexed Steering Wheel with Controls for Windshield Wipers, ICC and Cruise Control
- Intermittent Windshield Wipers
- Audible Turn Signals
- Cruise Control Light on Dash
- Roof-Mounted Dual Trumpet Air Horns
- Ultraleather™ Six-Way Power Pilot Seat and Co-Pilot Seat with Power Footrest
- Pilot and Co-Pilot Pull-Down Sunshades
- Carpeted Driver and Passenger Floor Mats
- 10-Disc CD Changer
- Interior Solar Privacy Sunscreens (Manual)
- Aladdin™ Junior System
- 3- Camera Rear Vision System with Audio and Adjustable Center Camera
- GPS System
- Sirius Radio Satellite System (Requires Subscription)
- Auxiliary Blower

OPTIONS

APPLIANCES AND ACCESSORIES: FEATURES

- Norcold® 12 Cu. Ft. 2-Way 4-Door Refrigerator with Ice Maker
- High-Output 3-Sealed-Burner Cooktop without Oven
- Spacesaver Convection Microwave with Touch Control
- 37" Flatscreen LCD TV in Living Area Hutch (Replaces Front Cockpit TV) (42KFQ)
- 32" Flatscreen LCD TV in Front Cockpit Overhead (N/A: 42KFQ)
- 20" LCD TV in Bedroom
- Home Theater System

- TV Antenna with Booster
- Exterior Hook-Ups for DSS Dish and Cable
- Digital Satellite System Prep
- Washer/Dryer Prep

OPTIONS

- Dometic Sidewise 14 Cu. Ft. 2-Way Refrigerator with Water and Ice Dispenser in the Door
- Stainless Steel Package (Includes Stainless Steel Refrigerator and Microwave)

- Combination Washer/Dryer
- Stackable Washer/Dryer (N/A: 40PDQ, 42PDQ)
- Bedroom DVD Player
- Semi-Automatic Digital Satellite Dish (Does Not Include Receiver)
- In-Motion Digital Satellite Dish (Does Not Include Receiver)
- Central Vacuum System
- Exterior Entertainment Center (26" LCD/AM/FM/CD Radio with Two Speakers) (N/A: 42KFQ)

INTERIOR: FEATURES

- Gloss Finish Cabinetry Wood: Stained Oak and Natural Oak
- Solid Wood Raised Panel Cabinet Doors
- Crown Molding in Bedroom and Living Area
- Lined Cabinet Shelves
- Heavy-Duty Ball Bearing Drawer Guides
- Refrigerator Raised Panel Hardwood Inserts
- Satin Nickel Cabinetry Hardware
- Satin Nickel Bath Accessories
- Radius Polished Solid Surface Kitchen Countertop with Stainless Steel Sink with Two Sink Covers
- Roll-Out Polished Solid Surface Kitchen Countertop Extension
- Decorative Tile with Corian® Molding Backsplash in Galley and Lavatory
- Polished Solid Surface Bathroom Countertop with Integrated Sink

- Kitchen Overhead Cabinets with Adjustable Shelf
- Sink and Stove Top Cover Storage Area inside Kitchen Base Cabinet
- Ceramic Tile Flooring in Kitchen and Bathroom
- Tile Entry Floor
- Designer Carpeting in Living Area and Bedroom
- Soft Touch Padded Vinyl Ceiling (Century Foam)
- Decorative Hardwood Slide-Out Fascia with Decorative Center Block
- Fabric Valances with Hardwood Accents Throughout
- Solid Wood Raised Panel Bathroom Door
- Oversized Rear Wardrobe Closet with Satin Nickel Mirrored Door Frames
- Decorative Headboard
- Bedroom Nightstands with Polished Solid Surface Countertops

- Bedroom Dresser with Polished Solid Surface Countertop and Integrated Hamper
- Bedroom Dresser/Wardrobe at the Foot of Bed
- Decorative Mirror
- Bedspread
- Day/Night Pleated Blackout Shades in Living Area and Bedroom; Mini Blinds in Kitchen and Private Bath
- Soil Repellant Protection on Fabric

OPTIONS

- Decors: Raspberry Truffle, Sand Fossil, Satin Sable, Moonflower II
- Gloss Finish Cabinetry Wood Choice: Stained Cherry, Natural Cherry, Spiced Maple
- Full-Tile Living Room
- Solid Surface Kitchen Sink

FURNITURE: FEATURES

- Legless Polished Solid Surface Dinette Table with Two Dinette Chairs and Two Folding Chairs
- Roadside: Fabric Jackknife Sofa
- Curbside: Fabric Jackknife Sofa
- Queen Bed with Polished Solid Surface Nightstands (40PDQ)
- King Bed (N/A: 40 PDQ)

OPTIONS

- King Bed with One Nightstand (40PDQ)
- Queen Bed Select Comfort Air Mattress (40PDQ)
- King Bed Select Comfort Air Mattress
- Roadside: Leather Jackknife Sofa
- Roadside: Fabric Hide-A-Bed Sofa with Air Mattress (N/A: 42KFQ)
- Roadside: Leather Hide-a-Bed with Air Mattress (N/A: 42KFQ)
- Roadside: Leather/Fabric Sectional Booth Dinette Ensemble (N/A: 42KFQ)

- Roadside: Wraparound Computer Desk with Ultraleather™ Euro-Recliner (N/A: 42DSQ)
- Curbside: Fabric Hide-A-Bed Sofa with Air Mattress (N/A: 42DSQ)
- Curbside: Leather Hide-A-Bed Sofa with Air Mattress (N/A: 42DSQ)
- Curbside: Leather Jackknife Sofa
- Curbside: Leather J-Lounge with Drawer

ELECTRICAL SYSTEMS AND LIGHTS: FEATURES

- 50 Amp 12V Distribution Panel and Power Cord
- Battery Maintainer
- Onan® 8.0 kW Quiet Diesel Generator on Manual Slide-Out (40PDQ)
- Onan® 10.0 kW QD Generator on Manual Slide-Out (N/A: 40PDQ)
- Energy Management System
- Slide-Out Battery Tray
- Four 6V Deep Cycle House Batteries
- Two 12V Heavy-Duty Chassis Batteries
- Battery Disconnect Switch at Front Door
- Battery Boost Switch in Cockpit
- 2,000 Watt Inverter
- Porch Light
- Lighted Exterior Power Entry Step
- Lighted Interior Entry Steps
- Lights in Outside Storage Compartments
- 120V Receptacles in Outside Storage Compartment
- Underhood Utility Light
- Multiplex 12V Wiring for All Lighting Throughout Interior of Coach
- Pilot and Co-Pilot Map Lights
- Fluorescent Ceiling Lights Throughout
- Satin Nickel Decorative Lighting in Living Room, Dinette and Bath and Bedroom Slide-Out
- Halogen Lights under Living Room, Dining Room, Bed Overhead, and Bedroom Dresser Overhead Cabinets
- Satin Nickel Decorative Vanity Light
- Convenience Center Located in Hallway
- Prewire for Solar Panel

OPTIONS

- Auto Generator Start
- 50 Amp 120V Distribution Panel and Power Cord Reel
- Solar Panel

PLUMBING AND LP SYSTEMS: FEATURES

- Demand Water System and Water Pump
- 10-Gallon LP Gas/Electric Water Heater with Electronic Ignition (Delivers Up to 16 Gallons of Hot Water)
- Single Lever Satin Nickel Kitchen Faucet with Pullout Sprayer
- Central Water Filtration System
- Single Handle Satin Nickel Bath Faucet
- Single Handle Satin Nickel Shower Faucet with Slide Bar and Shut-Off Valve at Shower Head
- Exterior Tank Monitoring Gauges
- Water Heater Bypass Valve
- Water Pump Switch in Convenience Center, Service Bay and Bath
- China Toilet
- China Toilet Electronic Silent Plus (42DSQ)
- Shower inside Wet Bay with Hot/Cold Water
- No-Fuss Flush Holding Tank Rinsing System
- Gravity and Pressurized Water Fill
- Insulated Systems Compartment with Easy Access to Hook-Up
- Sewer Hose Storage (Deleted when RV Sani-Con Tank Drainage System is Selected)
- One-Piece Shower
- One-Piece Pear-Shaped Tub (42DSQ)
- Satin Nickel Shower Door Frame with Decorative Glass

OPTIONS

- Power Water Hose Reel
- RV Sani-Con Tank Drainage System
- Electric Automatic Winterization
- Neo-Angled Bathtub (N/A: 42DSQ, 42KFQ)

HEATING, VENTS AND AIR CONDITIONING: FEATURES

- Dual 13.5M BTU Roof Air Conditioners with Ducted Air, Heat Pumps and Digital Thermostat Control (40PDQ)
- Three 13.5M BTU Roof Air Conditioners with Wall Thermostat and Heat Pump (N/A: 40PDQ)
- Dual Zone Electronic Ignition Furnaces-51M BTU (One 31M and One 20M BTU)
- Electronic AC/Heat Climate Control System
- In-Floor Ducted Heating System
- 12V Attic Fan in Kitchen, Hall Bath and Private Bath
- 12V Heater in Wet Bay
- Dual 15M BTU Roof Air Conditioners with Ducted Air, Heat Pumps, and Digital Thermostat Control (40PDQ)
- Two 15M BTU Roof Air Conditioners and One 13.5M BTU Roof Air Conditioner with Wall Thermostats and Heat Pumps (N/A: 40PDQ)

OPTIONS

- Aqua-Hot® 450 Water and Heating System
- Ceiling Fan in Bedroom

WINDOWS, DOORS AND AWNINGS: FEATURES

- Radius Flush-Mounted Dual Pane Safety Glass Dark Tinted Slider Windows
- Front Entry Door with Removable Screen and Anti-Skid Steps
- Keyless Entry in Grab Handle with Baggage Door Lock Release and Doorbell
- Metal Interior Grab Handle at Entry Door and on Dash across from Passenger Seat
- Automatic Patio Awning
- Automatic Front Door Awning
- Topper Slide-Out Awnings Living Area and Bedroom
- Window Awnings on All Windows except Slide-Out Windows under Patio Awning
- Tinted Skylight in Bathroom with Protecta Glaze

OPTIONS

- Apex Automatic Patio Awning with Remote

SAFETY: FEATURES

- Fire Extinguisher
- Deadbolt Lock on Entrance Door
- 120V GFI Protected Circuit
- LP Gas Detector
- Smoke Detector
- Carbon Monoxide Detector
- Driver and Passenger Three-Point Integrated Seatbelts
- Third Brake Safety Light
- Egress Windows

Due to continuous product improvement, please see the website for the latest in standards and options, specifications, and technical data. Go to www.holidayrambler.com.

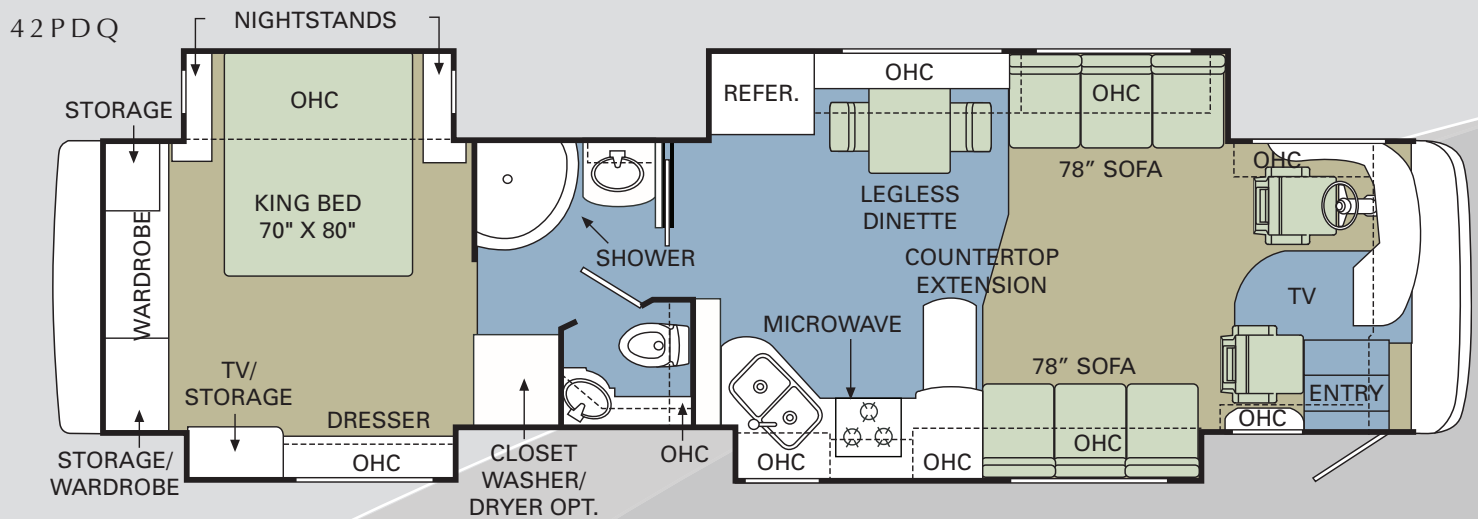
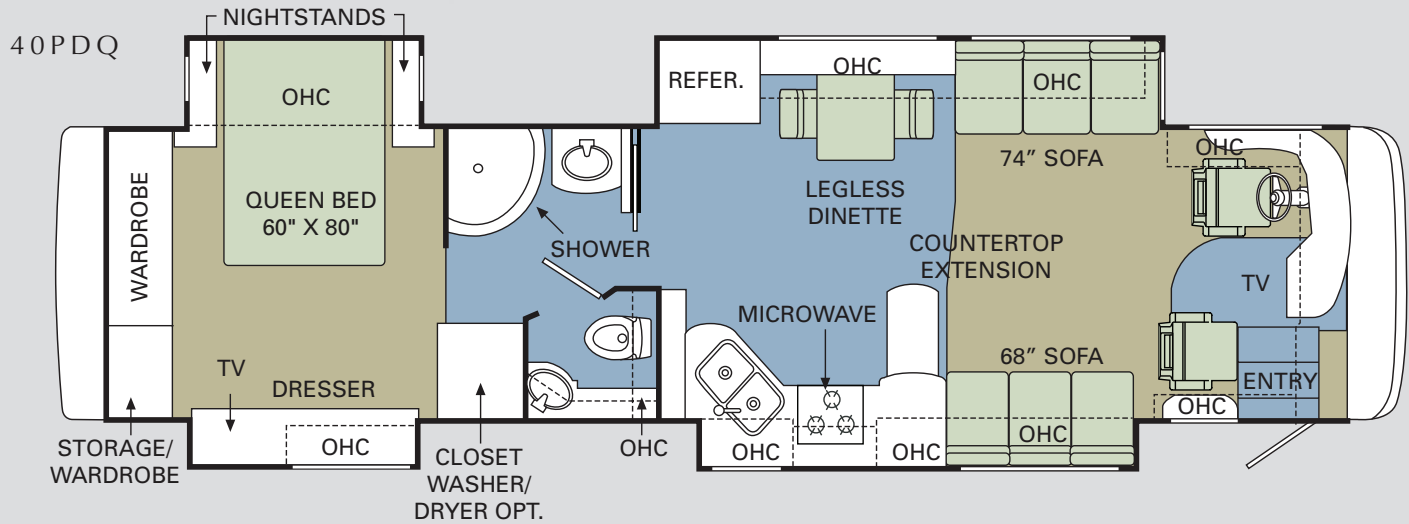
Weights*	40PDQ	42PDQ	42DSQ	42KFQ
Gross Vehicle Weight Rating	34,600	44,600	44,600	44,600
Gross Combined Weight Rating*	44,600	54,600	54,600	54,600
Front Gross Axle Weight Rating	14,600	14,600	14,600	14,600
Rear Gross Axle Weight Rating	23,000	20,000	20,000	20,000
Tag Axle Weight Rating (Lbs.)	N/A	10,000	10,000	10,000
Measurements				
Wheelbase	224"	270.25"	270.25"	270.25"
Overall Length	40' 11"	42' 11"	42' 11"	42' 11"
Overall Height with A/C (w/o DSS option)	12' 10"	12' 10"	12' 10"	12' 10"
Interior Height	84"	84"	84"	84"
Interior Width	96"	96"	96"	96"
Exterior Width	100.5"	100.5"	100.5"	100.5"
Tank Capacities**				
Water Heater	10	10	10	10
Gray Tank	78	78	78	78
Black Tank	44	44	44	44
Fresh Tank	100	100	100	100
LP Tank***	31	31	31	31
Fuel Tank	130	130	130	130

* Towing capacity is limited by GCWR; your vehicle's towing capacity is the difference between the GCWR and the actual vehicle weight, including all water, fuel, passengers and cargo. Your towed vehicle should be equipped with auxiliary brakes if the weight of the towed vehicle exceeds 1,000 lbs. Consult your owner's manual for further towing information.

** All tank capacities are estimated based upon calculations provided by the tank manufacturers and represent approximate capacities. The actual "usable capacity" may be greater or less than the estimated capacities based upon fabrication and installation of the tanks.

*** Actual filled LP capacity is 80% of listing due to safety shut-off required on tank.

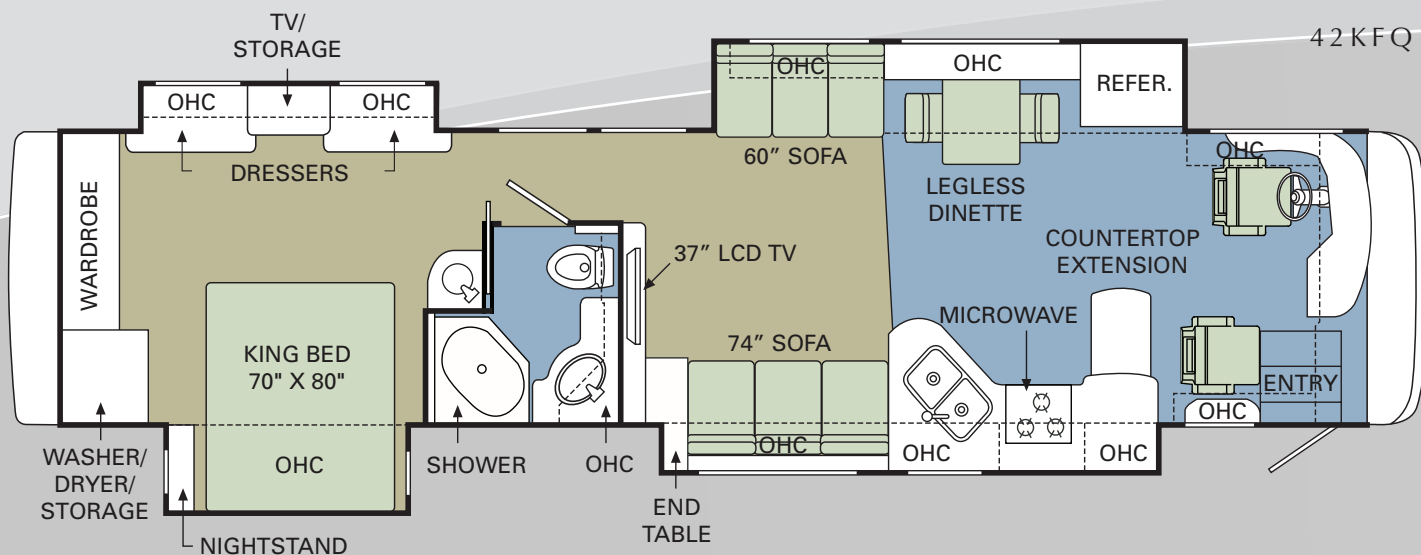
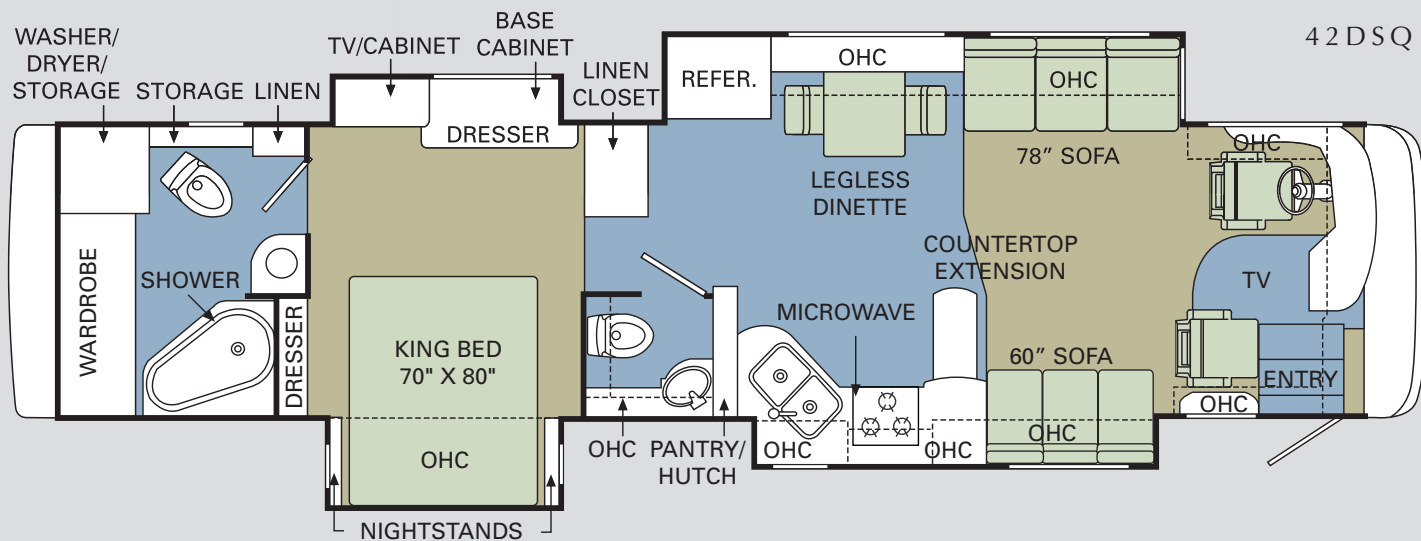
The actual overall length of the recreational vehicle may differ from that indicated in the brochure due to variances in the manufacturing process and/or installed components. The actual length may be greater or less than that indicated. Due to the large variety of options and floorplan arrangements available to our customers, actual weights for each unit can differ significantly. Holiday Rambler provides a weight sticker on each unit we produce which includes that unit's tank capacities and approximate weight. Consult your local Holiday Rambler dealer for unit availability and further information. The information printed in this brochure reflects product design, fabrication, and component parts at the date of printing. The manufacturer reserves the right, at any time, to make changes in product design or material or component specifications as its sole option, without notice. This includes the substitution of components of a different brand or trade name which will result in comparable performance. All information printed in this brochure is subject to change after the date of printing. Some features shown or mentioned in this brochure are optional and may only be available in selected floorplans. Photographs may show props or decorations that are not standard equipment on Holiday Rambler models. Holiday Rambler, the Holiday Rambler logo and its design, are registered trademarks. All other products and company names are trademarks and/or registered trademarks of their respective holders. While the color of the motorhome's exterior and the interior fabrics depicted in this sales brochure are fair and reasonable depictions, the colors depicted may not be an exact match of the actual colors because of the variances in photo-processing and variances caused by inserting the photographs within the sales brochure. Due to product improvements, changes during the model year and/or transcription errors that may occur, information represented within this brochure may not be accurate at the time of your purchase. If certain information is significant to your purchasing decision, please confirm the information with your dealer prior to submitting your order. Component part and appliance manufacturers issue limited warranties covering those portions of the recreational vehicle not covered by the Limited Warranties issued by Monaco Coach Corporation. To learn which specific component parts and appliances are excluded from the Limited Warranties issued by Monaco Coach Corporation, please contact your selling dealership or Monaco Coach Corporation directly, or review the warranty packet inside the recreational vehicle.



H O L I D A Y R A M B L E R . C O M

Log on to our website anytime, night or day. It's your link to everything Holiday Rambler, including product news and updates, club events, dealer and service center info and much more. Take it for a test drive today.





ASSISTANCE
SALES • TECH • ROADSIDE



WE'RE HERE. ANYTIME, EVERY TIME.

- Reach us anytime — literally — via our live customer support line.
- Drive in to one of our 350 Service Centers.
- Enjoy the first year free when you enroll in our Owner Advantage Roadside Assistance Program.
- See where it all begins with a tour of one of our facilities in Indiana or Oregon. Call 1-800-650-7337 or 1-800-634-0855 to find out more.



SCEPTER®
2008

BEING DIFFERENT MAKES ALL THE DIFFERENCE.

At Monaco Coach Corporation, we always strive to be the best. And that means thinking outside the box. Giving you more of what you want in an RV. Like our exclusive Roadmaster chassis. PanaSuite™ full-wall slides. And programs like Monaco Financial Services and 24/7 roadside assistance. No other manufacturer can match Monaco's offerings. No one even comes close. Why not discover the difference for yourself? Visit www.monacodifferent.com.

**"No other manufacturer can match Monaco's offerings.
No one even comes close."**



WARRANTIES

12 MONTH/24,000 MILE basic limited warranty

5 YEAR/50,000 MILE limited warranty on aluminum or steel frame structure of sidewall, roof, front and rear cap

3 YEAR/50,000 MILE limited warranty on Roadmaster chassis

Applies to certain models. See owner's manual for complete details.



HOLIDAY RAMBLER®

This is Living®



MONACO COACH CORPORATION

606 Nelson's Parkway Wakarusa, IN 46573
www.holidayrambler.com | 800-245-4778



Monaco is traded on the New York Stock Exchange under the listing MNC.
© 2007, Monaco Coach Corporation 07/07 NPN:BROHSCE Litho in USA.