

# CHATEAU<sup>®</sup>

BECAUSE TWO WEEKS OF VACATION IS NEVER  
ENOUGH, MAKE EVERY DAY AN ADVENTURE  
IN A CHATEAU<sup>®</sup> MOTORHOME FROM  
THOR MOTOR COACH.



Made to fit.

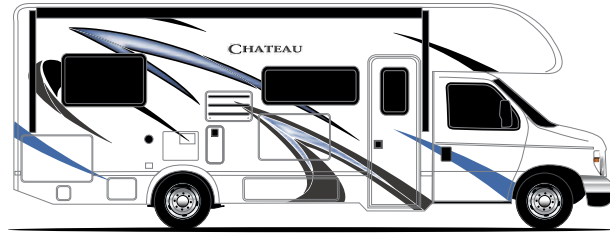


# CHATEAU®

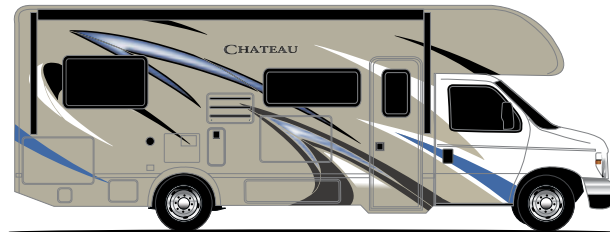
Get ready for a road trip like you never thought possible, one where there's no asking "are we almost there yet"? Because In a 2020 Chateau® from Thor Motor Coach, "There" is wherever you happen to be.



# EXTERIOR OPTIONS



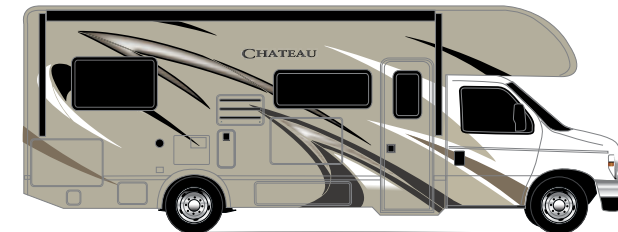
STANDARD GRAPHICS



BRILLIANT BLUE **HD-MAX**



BONITA BAY  
FULL-BODY PAINT (31B, 31E & 31W)

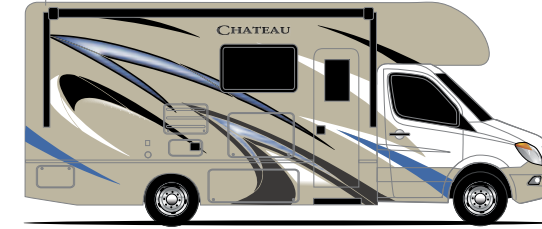


TRANQUIL BEIGE **HD-MAX**

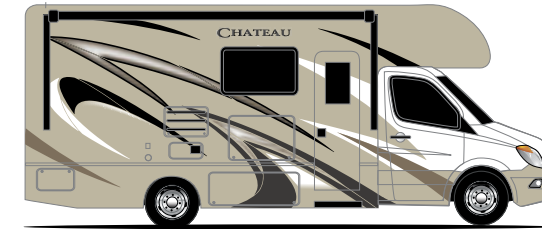


DAYTONA BEACH  
FULL-BODY PAINT (31B, 31E & 31W)

# SPRINTERS



BRILLIANT BLUE **HD-MAX**



TRANQUIL BEIGE **HD-MAX**



BONITA BAY FULL-BODY PAINT

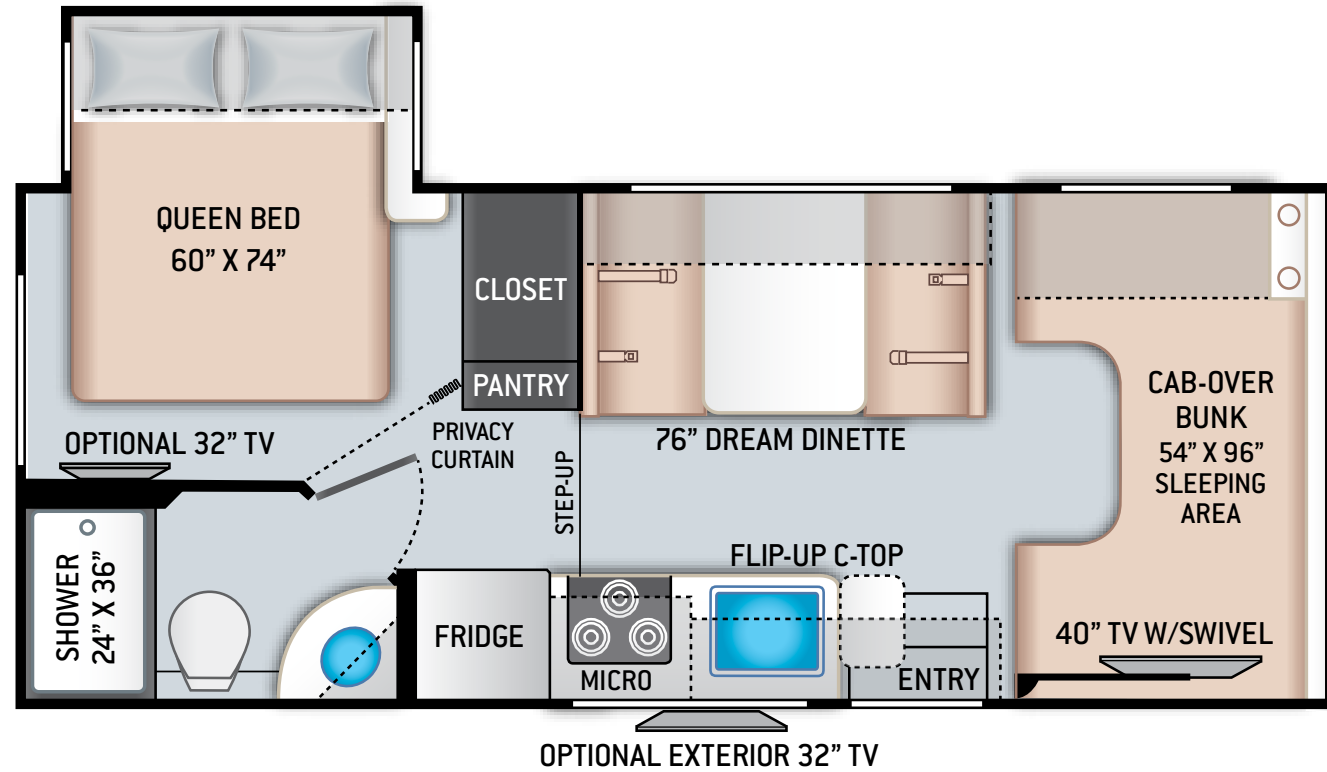


DAYTONA BEACH FULL-BODY PAINT





# FLOOR PLANS

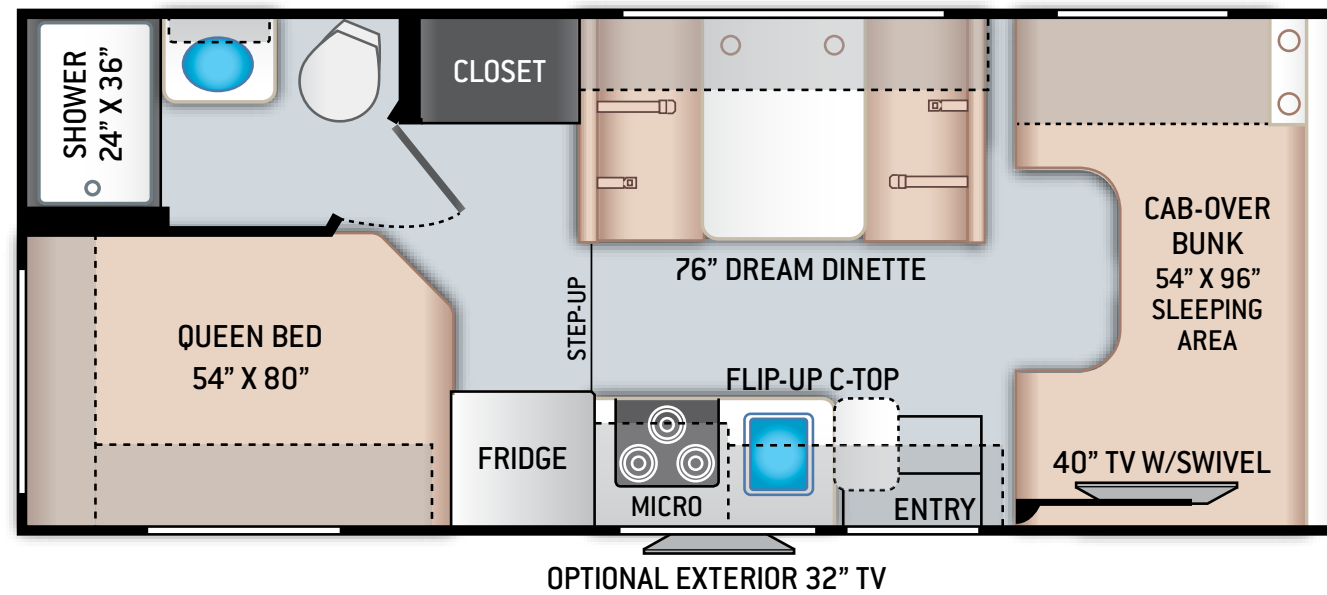


## 22B

# SPECIFICATIONS 22B

CHASSIS	Ford / Chevy
GROSS VEHICLE (GVWR)	12,500 / 12,300
GROSS COMBINED (GCWR)	18,500 / 16,000
WHEEL BASE	158" / 159"
EXTERIOR LENGTH (W/O LADDER)	24' / 24'-6"
EXTERIOR HEIGHT (W/AC)	11'
EXTERIOR WIDTH (W/O MIRRORS)	99"
INTERIOR HEIGHT (LIVING AREA)	84"
AWNING SIZE	15'
FUEL (GAL)	55 / 57
LPG (LBS)	40.9
FRESH/WASTE/GRAY WATER (GAL)	40 / 29 / 25
WATER HEATER (GAL)	6
FURNACE (BTUS)	19,000
EXTERIOR STORAGE CAPACITY (CU. FT.)	30.9
HITCH WEIGHT RATING (LBS)	8,000

# FLOOR PLANS

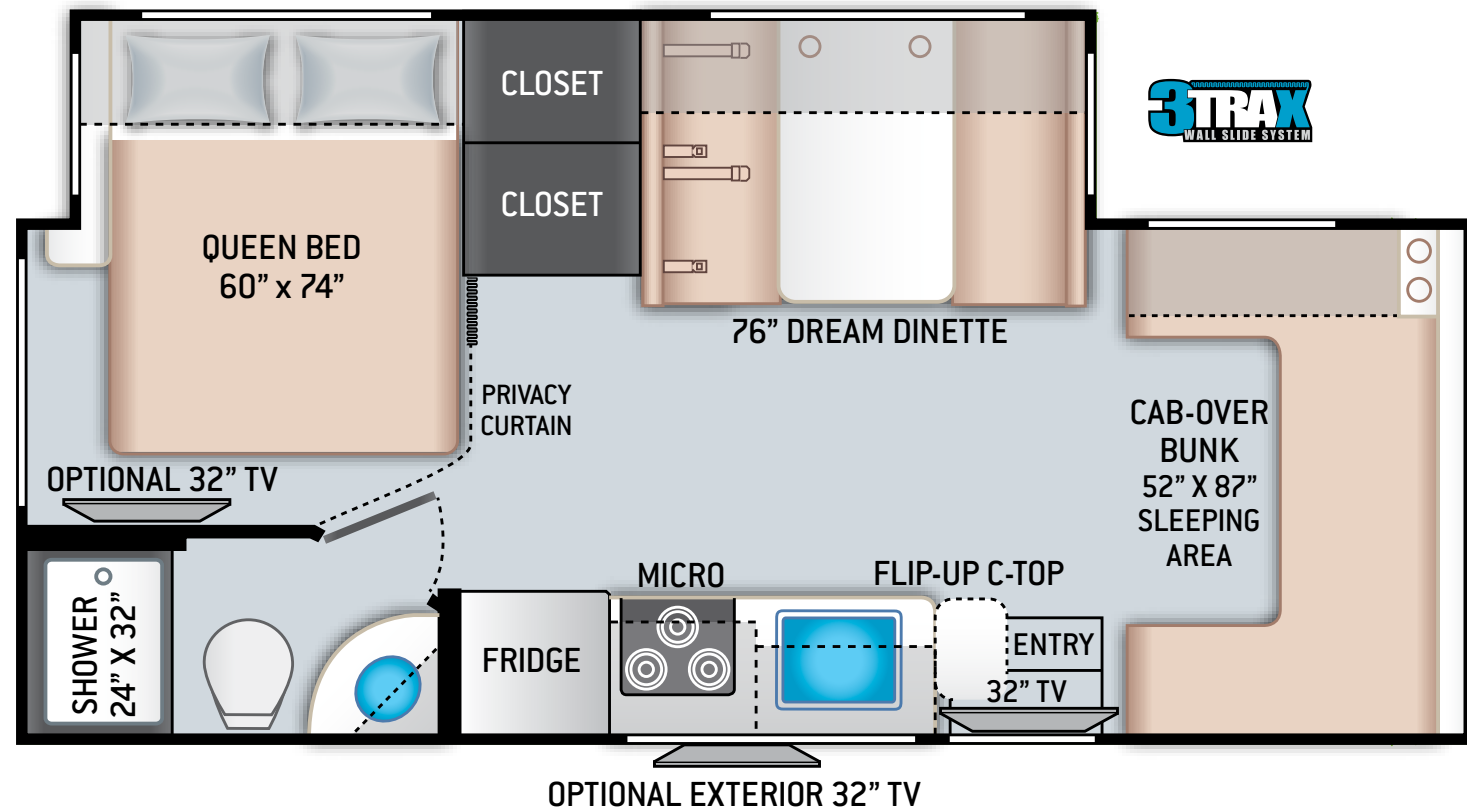


22E

## SPECIFICATIONS 22E

CHASSIS	Ford / Chevy
GROSS VEHICLE (GVWR)	12,500 / 12,300
GROSS COMBINED (GCWR)	18,500 / 16,000
WHEEL BASE	158" / 159"
EXTERIOR LENGTH (W/O LADDER)	24' / 24'-6"
EXTERIOR HEIGHT (W/AC)	11'
EXTERIOR WIDTH (W/O MIRRORS)	99"
INTERIOR HEIGHT (LIVING AREA)	84"
AWNING SIZE	15'
FUEL (GAL)	55 / 57
LPG (LBS)	40.9
FRESH/WASTE/GRAY WATER (GAL)	40 / 24.5 / 37
WATER HEATER (GAL)	6
FURNACE (BTUS)	19,000
EXTERIOR STORAGE CAPACITY (CU. FT.)	50.3
HITCH WEIGHT RATING (LBS)	8,000

# FLOOR PLANS

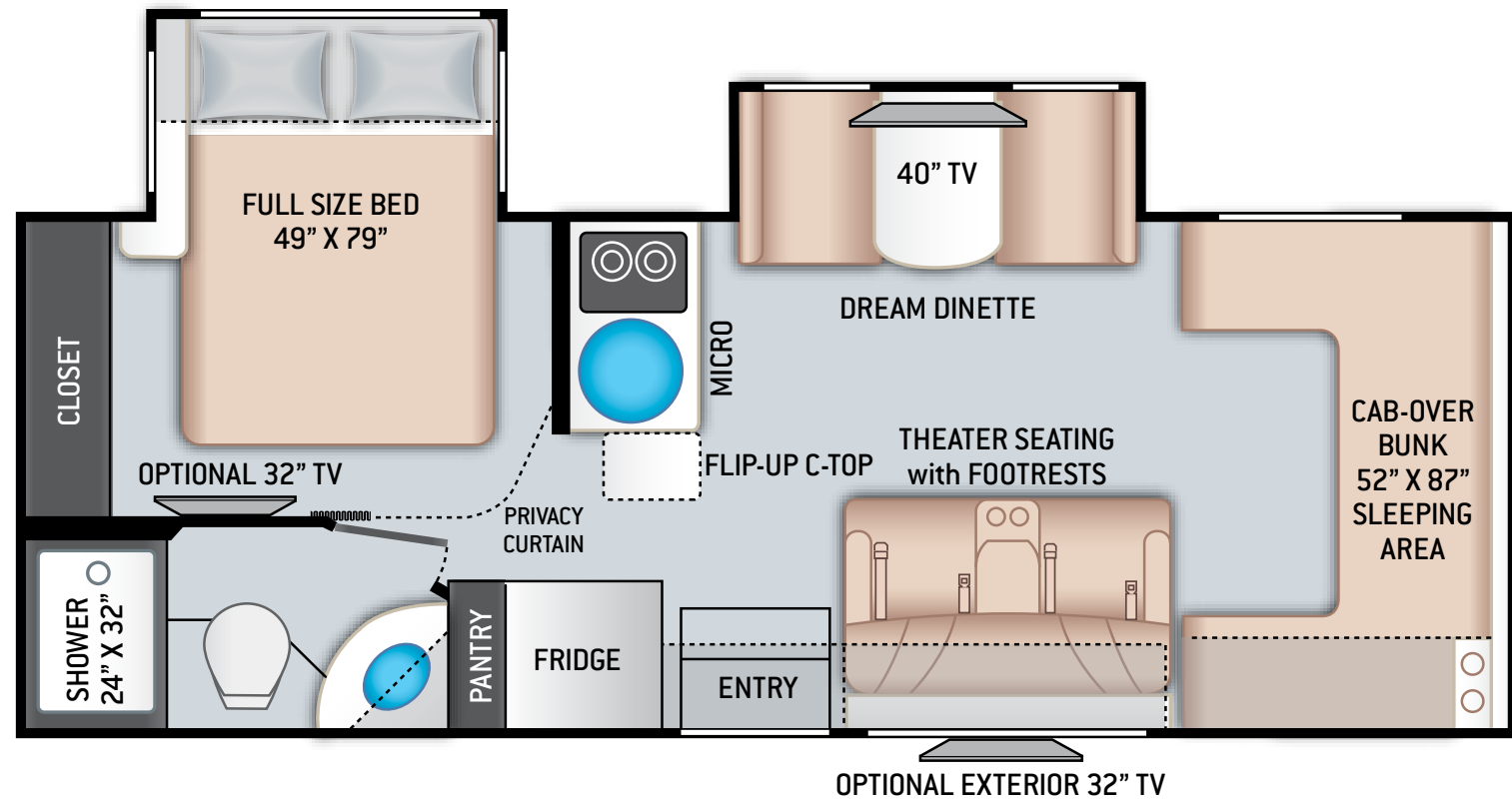


24BL 

## SPECIFICATIONS 24BL

CHASSIS	Mercedes-Benz
GROSS VEHICLE (GVWR)	11,030
GROSS COMBINED (GCWR)	15,250
WHEEL BASE	170.3"
EXTERIOR LENGTH (W/O LADDER)	24'-8"
EXTERIOR HEIGHT (W/AC)	11'-7"
EXTERIOR WIDTH (W/O MIRRORS)	90"
INTERIOR HEIGHT (LIVING AREA)	84"
AWNING SIZE	16'
FUEL (GAL)	26.4
LPG (LBS)	68.2
FRESH/WASTE/GRAY WATER (GAL)	30 / 24.5 / 38
WATER HEATER (GAL)	Tankless
FURNACE (BTUS)	30,000
EXTERIOR STORAGE CAPACITY (CU. FT.)	48.5
HITCH WEIGHT RATING (LBS)	5,000

# FLOOR PLANS

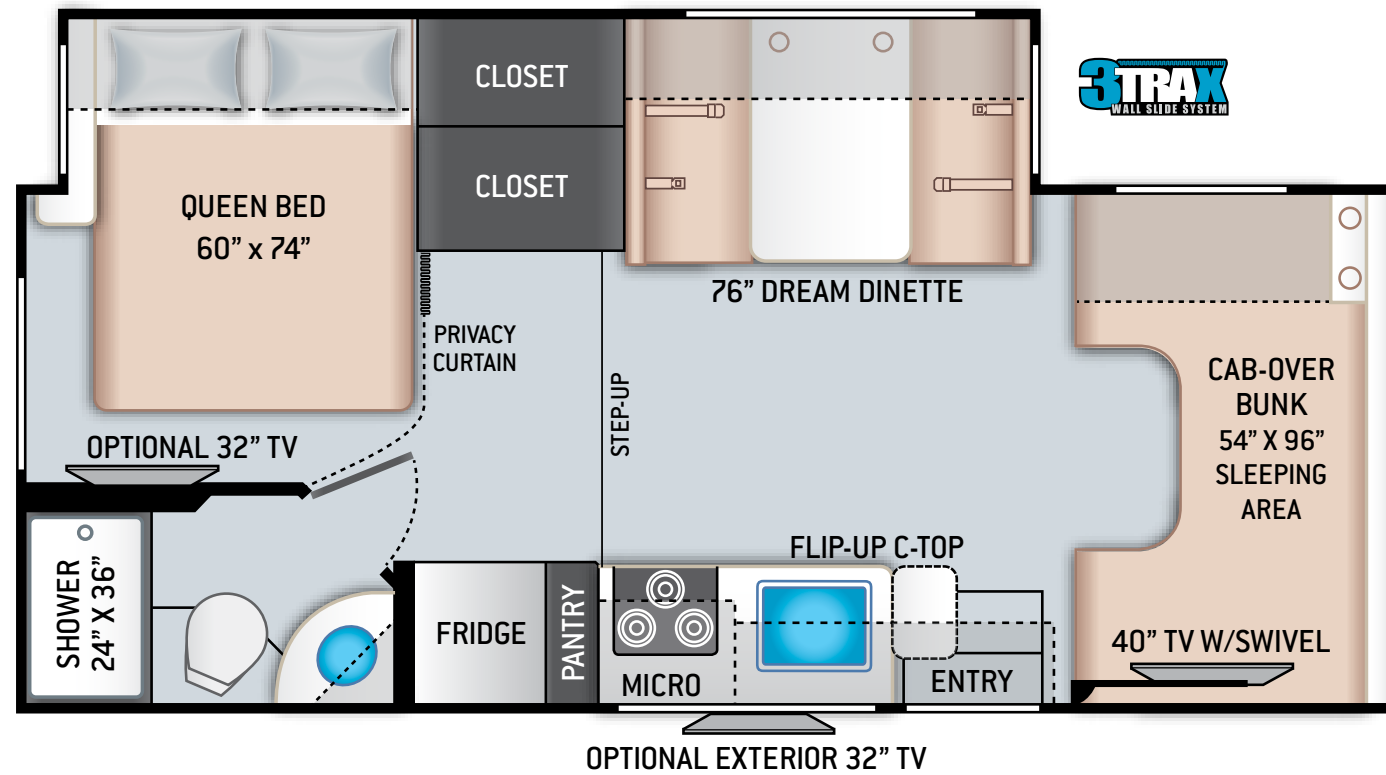


## SPECIFICATIONS 24DS

CHASSIS	Mercedes-Benz
GROSS VEHICLE (GVWR)	11,030
GROSS COMBINED (GCWR)	15,250
WHEEL BASE	170.3"
EXTERIOR LENGTH (W/O LADDER)	25'-7"
EXTERIOR HEIGHT (W/AC)	11'-11"
EXTERIOR WIDTH (W/O MIRRORS)	90"
INTERIOR HEIGHT (LIVING AREA)	84"
AWNING SIZE	16'
FUEL (GAL)	26.4
LPG (LBS)	68.2
FRESH/WASTE/GRAY WATER (GAL)	30 / 34.5 / 37
WATER HEATER (GAL)	Tankless
FURNACE (BTUS)	30,000
EXTERIOR STORAGE CAPACITY (CU. FT.)	47
HITCH WEIGHT RATING (LBS)	5,000



# FLOOR PLANS

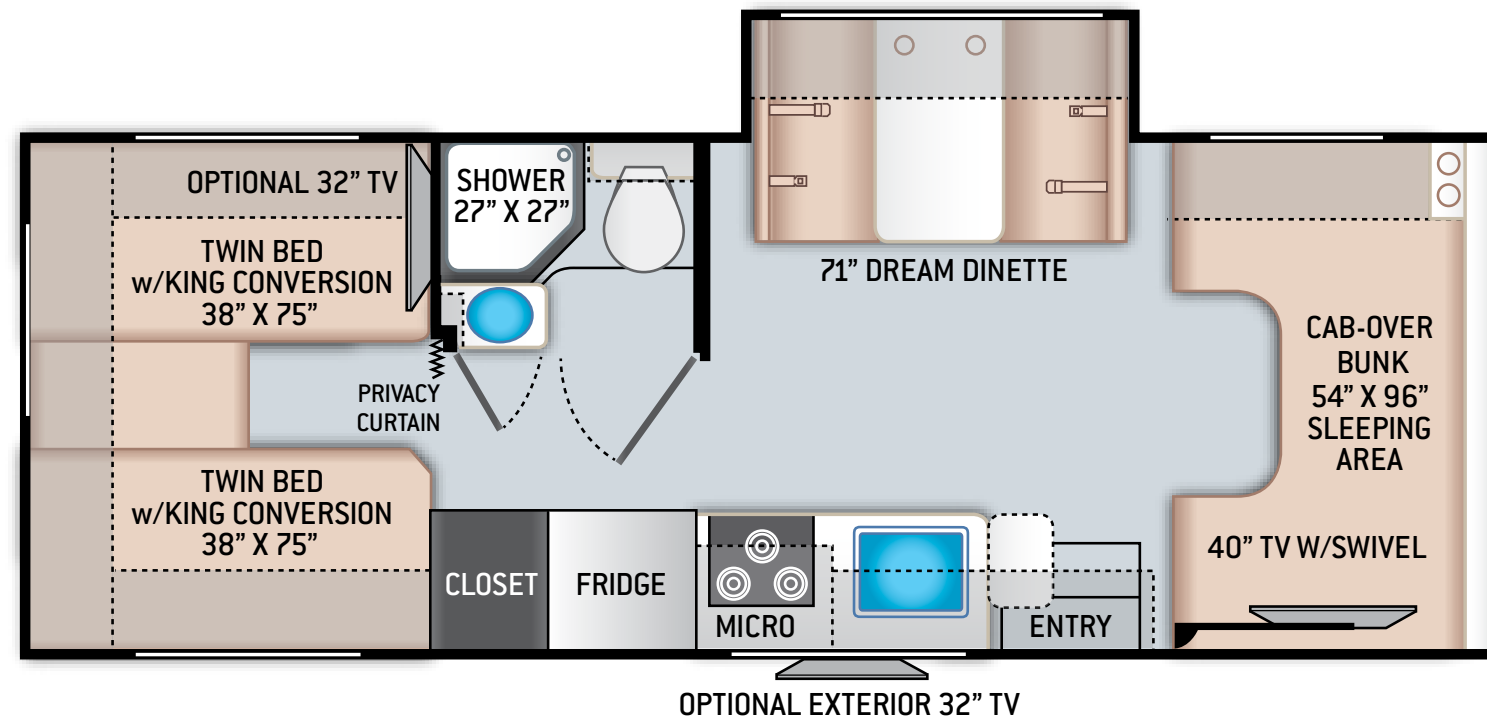


24F

## SPECIFICATIONS 24F

CHASSIS	Ford / Chevy
GROSS VEHICLE (GVWR)	12,500 / 14,200
GROSS COMBINED (GCWR)	18,500 / 20,000
WHEEL BASE	168" / 169"
EXTERIOR LENGTH (W/O LADDER)	24'-11" / 25'-5"
EXTERIOR HEIGHT (W/AC)	11'-2"
EXTERIOR WIDTH (W/O MIRRORS)	99"
INTERIOR HEIGHT (LIVING AREA)	84"
AWNING SIZE	16'
FUEL (GAL)	55 / 57
LPG (LBS)	40.9
FRESH/WASTE/GRAY WATER (GAL)	40 / 34.5 / 37
WATER HEATER (GAL)	6
FURNACE (BTUS)	30,000
EXTERIOR STORAGE CAPACITY (CU. FT.)	40
HITCH WEIGHT RATING (LBS)	8,000

# FLOOR PLANS

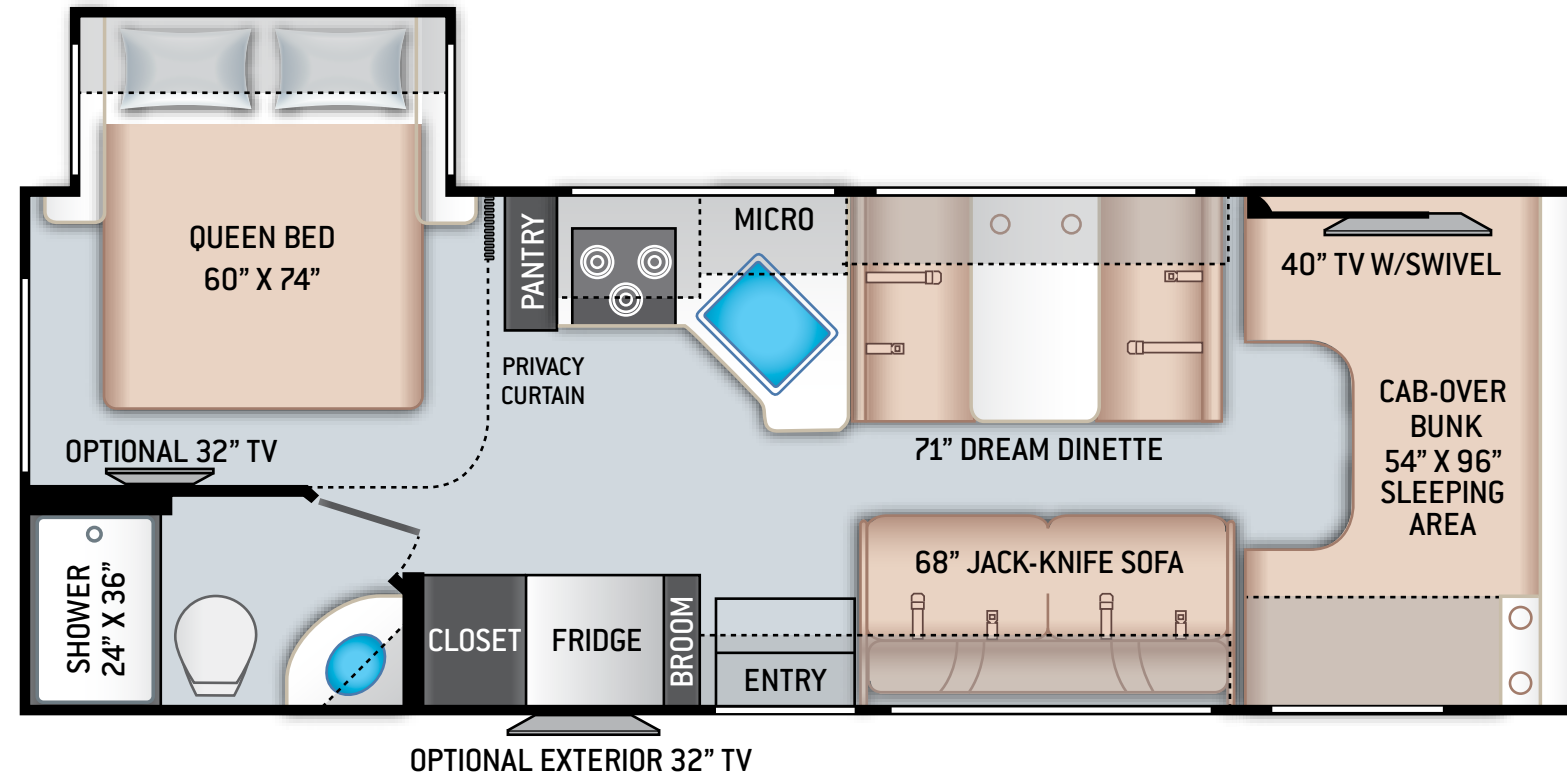


25V

## SPECIFICATIONS 25V

CHASSIS	Ford / Chevy
GROSS VEHICLE (GVWR)	12,500 / 14,200
GROSS COMBINED (GCWR)	18,500 / 20,000
WHEEL BASE	176" / 177"
EXTERIOR LENGTH (W/O LADDER)	26'-5" / 26'-11"
EXTERIOR HEIGHT (W/AC)	11'
EXTERIOR WIDTH (W/O MIRRORS)	99"
INTERIOR HEIGHT (LIVING AREA)	84"
AWNING SIZE	17'-6"
FUEL (GAL)	55 / 57
LPG (LBS)	40.9
FRESH/WASTE/GRAY WATER (GAL)	42 / 30 / 33
WATER HEATER (GAL)	6
FURNACE (BTUS)	30,000
EXTERIOR STORAGE CAPACITY (CU. FT.)	65
HITCH WEIGHT RATING (LBS)	8,000

# FLOOR PLANS

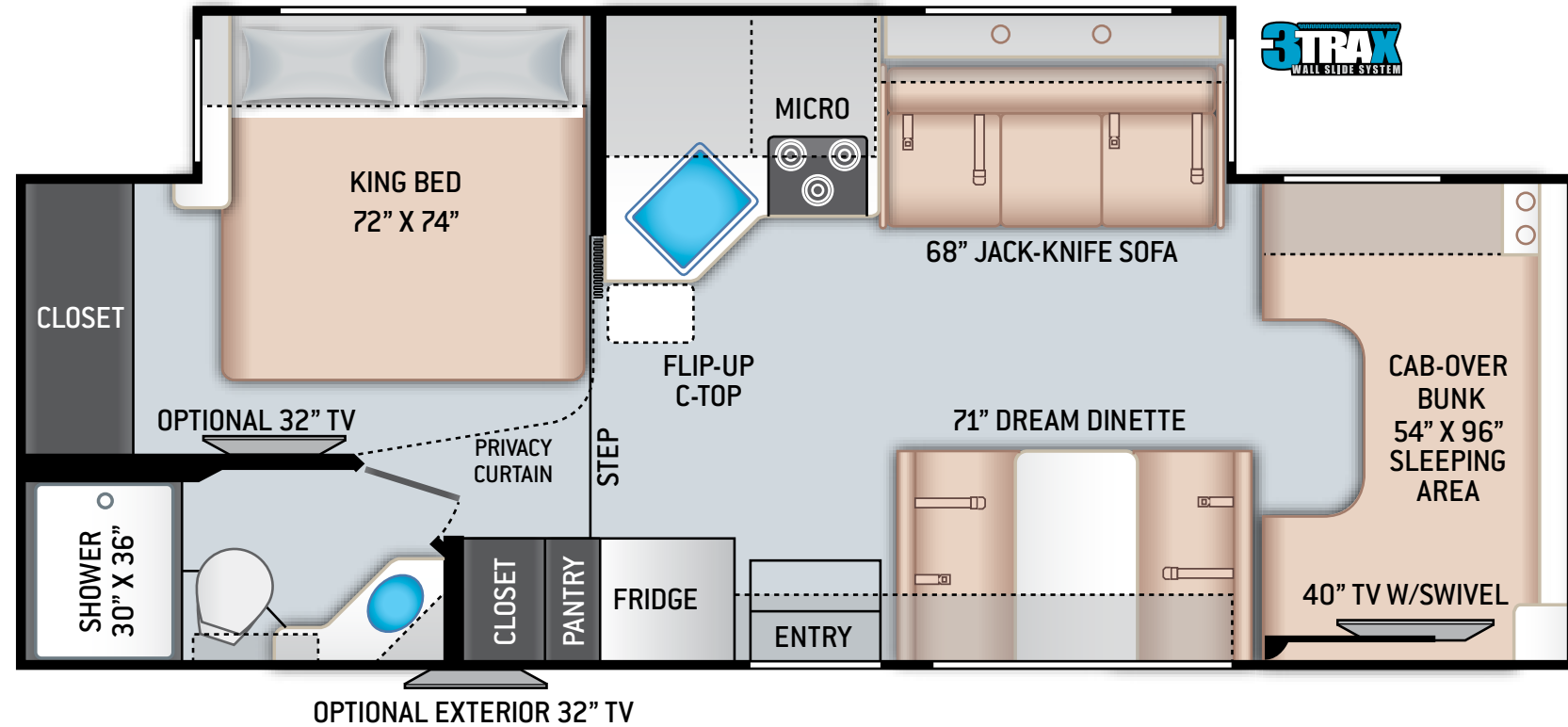


## 26B

# SPECIFICATIONS 26B

CHASSIS	Ford / Chevy
GROSS VEHICLE (GVWR)	12,500 / 14,200
GROSS COMBINED (GCWR)	18,500 / 20,000
WHEEL BASE	183" / 184"
EXTERIOR LENGTH (W/O LADDER)	27'-6" / 28'
EXTERIOR HEIGHT (W/AC)	11'
EXTERIOR WIDTH (W/O MIRRORS)	99"
INTERIOR HEIGHT (LIVING AREA)	84"
AWNING SIZE	18'
FUEL (GAL)	55 / 57
LPG (LBS)	40.9
FRESH/WASTE/GRAY WATER (GAL)	40 / 29 / 25
WATER HEATER (GAL)	6
FURNACE (BTUS)	30,000
EXTERIOR STORAGE CAPACITY (CU. FT.)	40
HITCH WEIGHT RATING (LBS)	8,000

# FLOOR PLANS



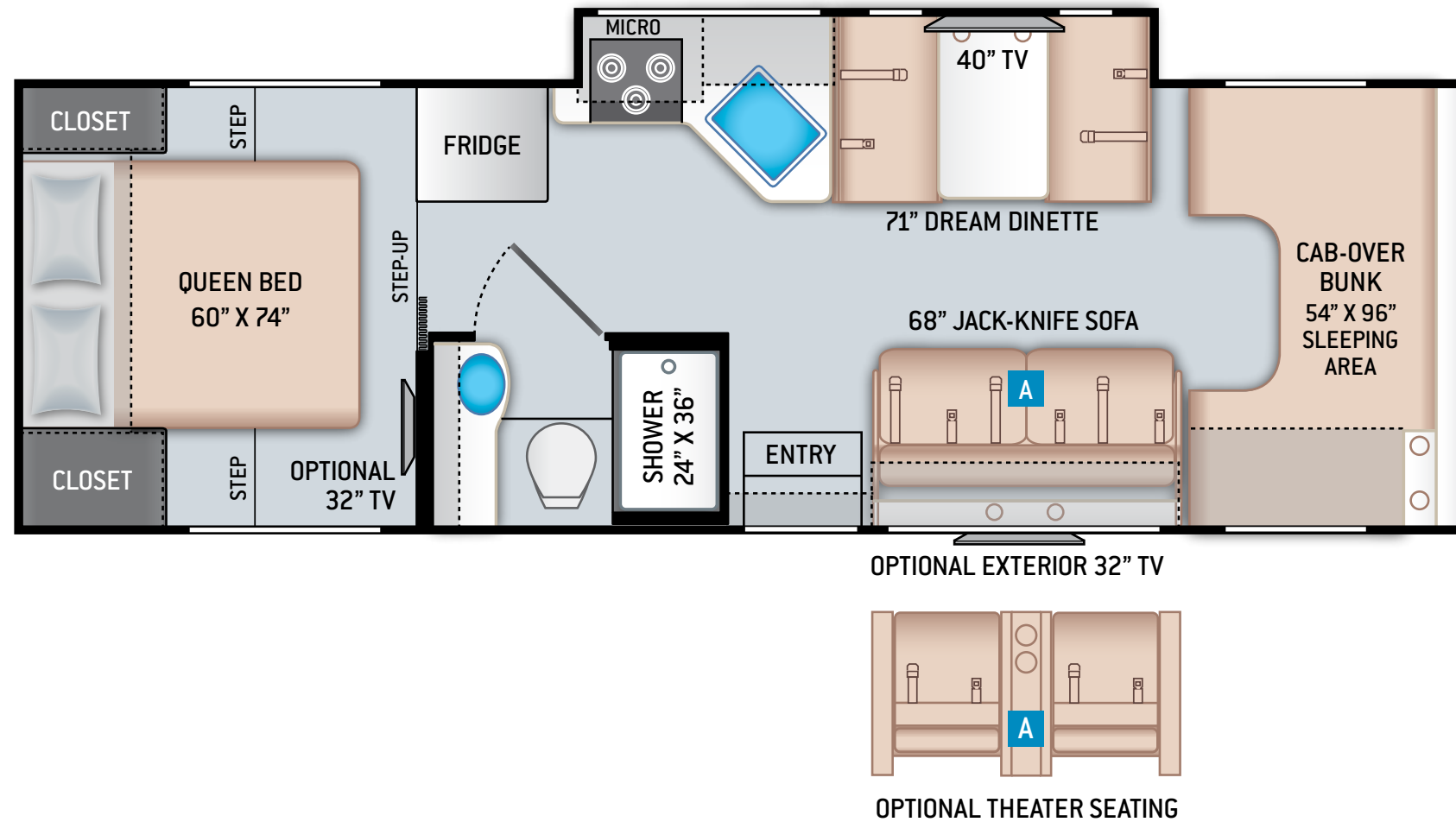
## 27R

## SPECIFICATIONS

27R

CHASSIS	Ford
GROSS VEHICLE (GVWR)	14,500
GROSS COMBINED (GCWR)	22,000
WHEEL BASE	209"
EXTERIOR LENGTH (W/O LADDER)	29'
EXTERIOR HEIGHT (W/AC)	11'
EXTERIOR WIDTH (W/O MIRRORS)	99"
INTERIOR HEIGHT (LIVING AREA)	84"
AWNING SIZE	20'
FUEL (GAL)	55
LPG (LBS)	40.9
FRESH/WASTE/GRAY WATER (GAL)	40 / 34.5 / 37
WATER HEATER (GAL)	6
FURNACE (BTUS)	30,000
EXTERIOR STORAGE CAPACITY (CU. FT.)	55.5
HITCH WEIGHT RATING (LBS)	8,000

# FLOOR PLANS

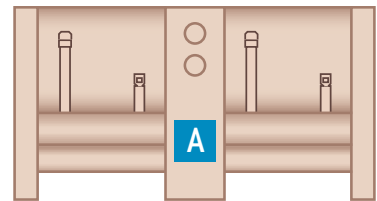
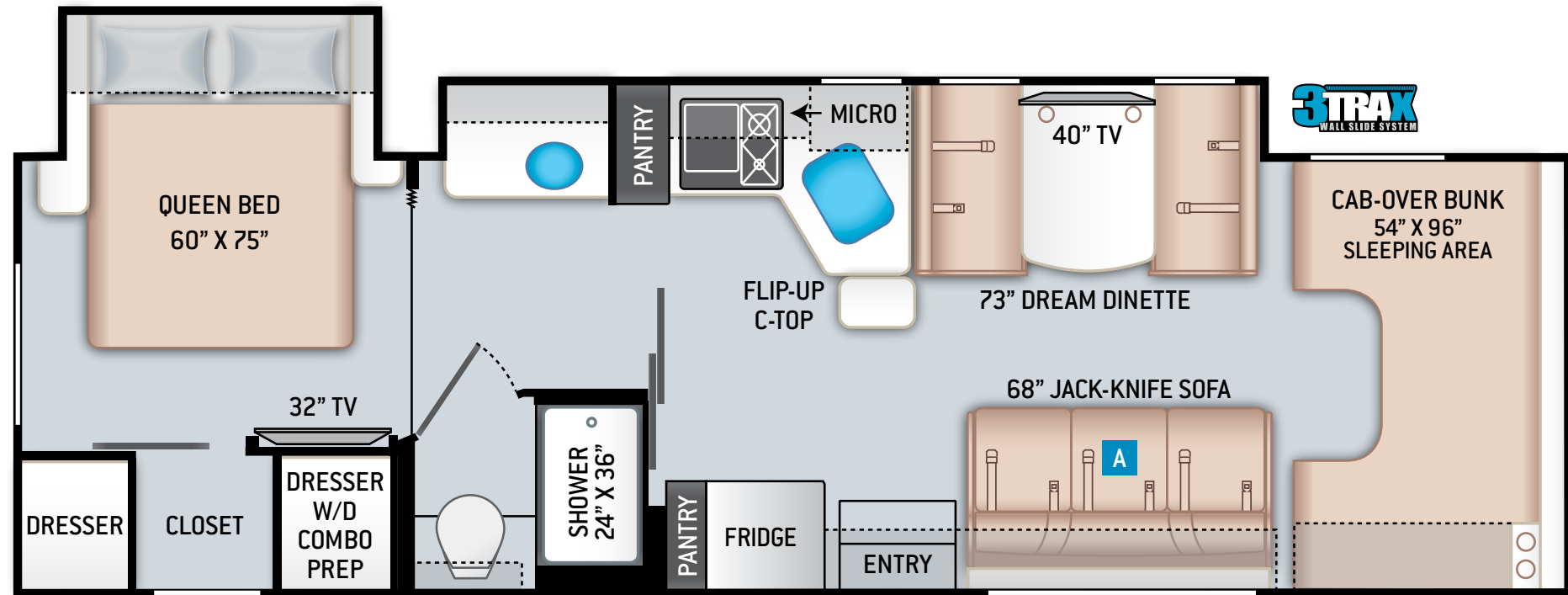


## 28Z

## SPECIFICATIONS 28Z

CHASSIS	Ford
GROSS VEHICLE (GVWR)	14,500
GROSS COMBINED (GCWR)	22,000
WHEEL BASE	212"
EXTERIOR LENGTH (W/O LADDER)	29'-11"
EXTERIOR HEIGHT (W/AC)	11'
EXTERIOR WIDTH (W/O MIRRORS)	99"
INTERIOR HEIGHT (LIVING AREA)	84"
AWNING SIZE	14'
FUEL (GAL)	55
LPG (LBS)	40.9
FRESH/WASTE/GRAY WATER (GAL)	40 / 26 / 32
WATER HEATER (GAL)	6
FURNACE (BTUS)	30,000
EXTERIOR STORAGE CAPACITY (CU. FT.)	99.9
HITCH WEIGHT RATING (LBS)	8,000

# FLOOR PLANS



OPTIONAL THEATER SEATING

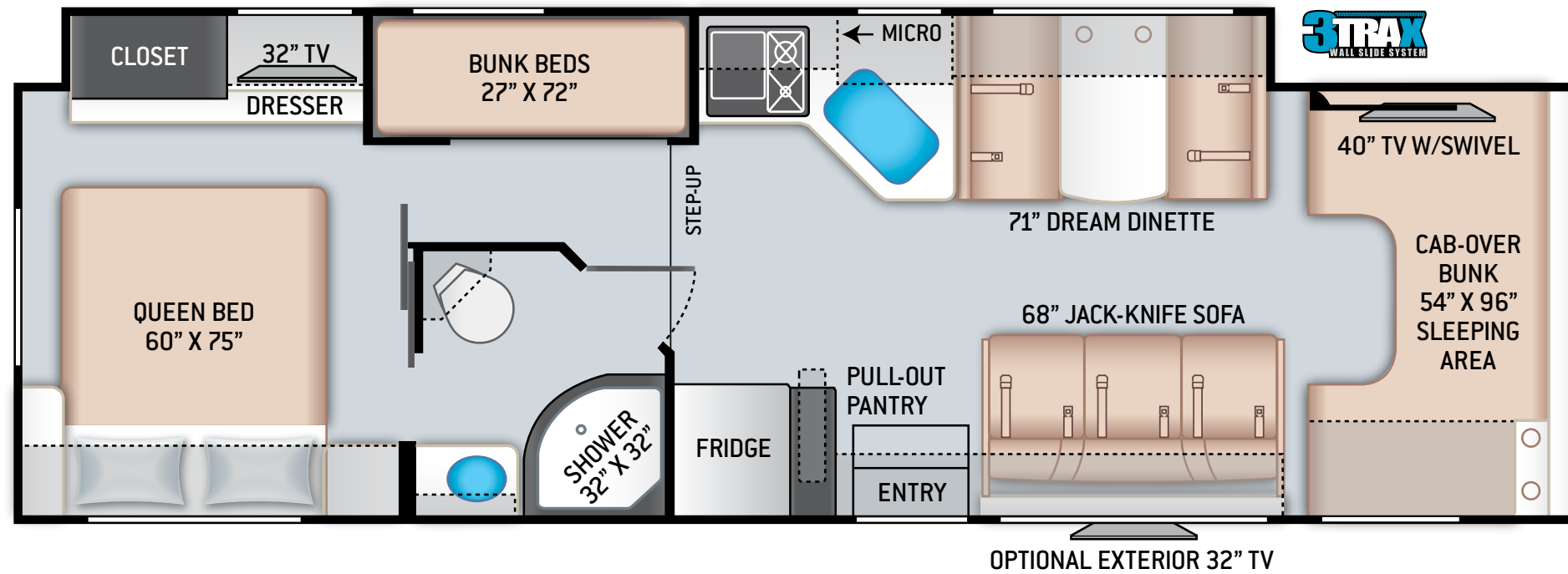
31B

## SPECIFICATIONS

31B

CHASSIS	Ford
GROSS VEHICLE (GVWR)	14,500
GROSS COMBINED (GCWR)	22,000
WHEEL BASE	219"
EXTERIOR LENGTH (W/O LADDER)	32'-2"
EXTERIOR HEIGHT (W/AC)	11'-2"
EXTERIOR WIDTH (W/O MIRRORS)	99"
INTERIOR HEIGHT (LIVING AREA)	84"
AWNING SIZE	18'
FUEL (GAL)	55
LPG (LBS)	40.9
FRESH/WASTE/GRAY WATER (GAL)	40 / 31 / 35
WATER HEATER (GAL)	Tankless
FURNACE (BTUS)	30,000
EXTERIOR STORAGE CAPACITY (CU. FT.)	44.5
HITCH WEIGHT RATING (LBS)	8,000

# FLOOR PLANS



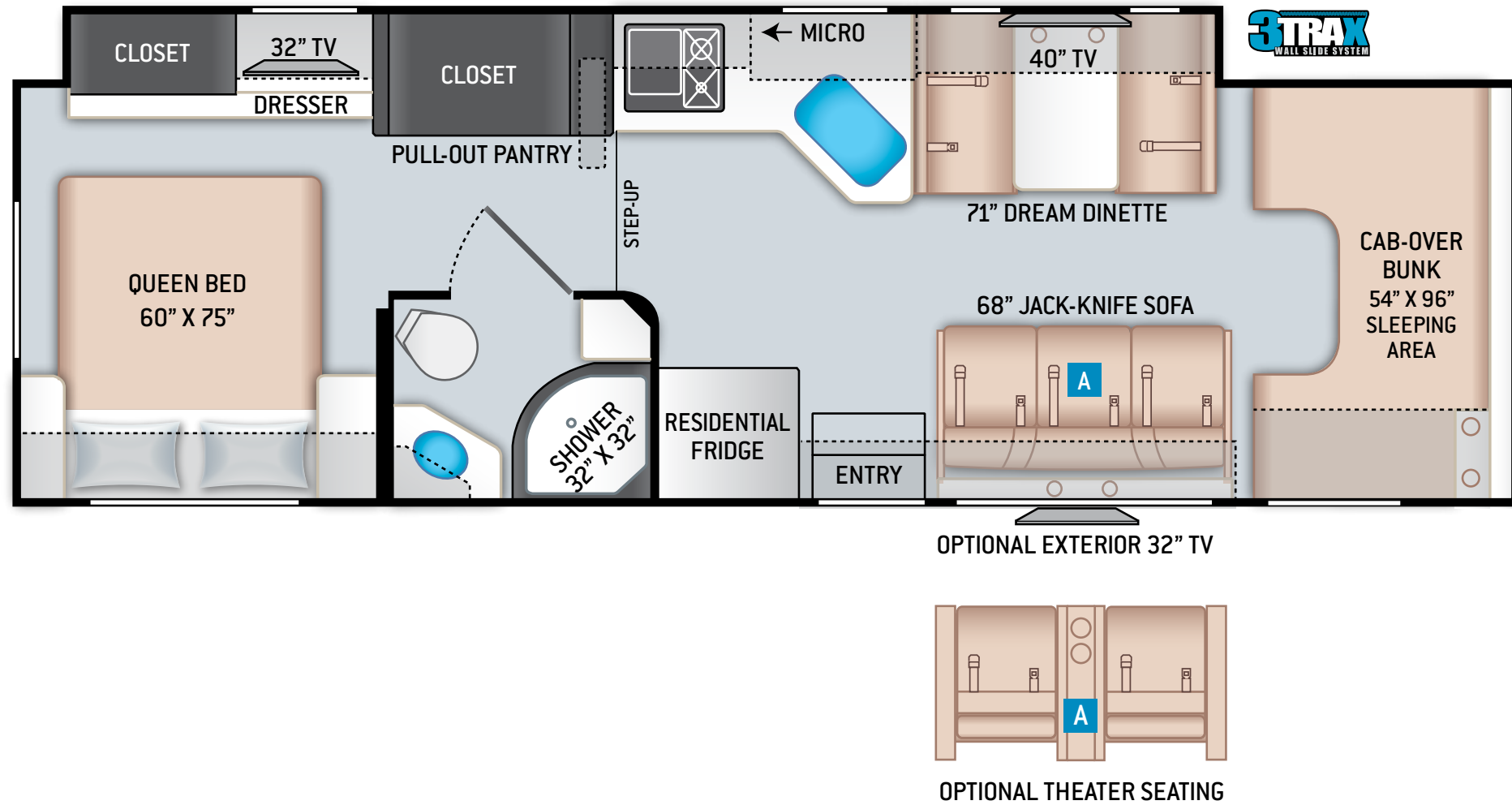
31E

## SPECIFICATIONS

31E

CHASSIS	Ford
GROSS VEHICLE (GVWR)	14,500
GROSS COMBINED (GCWR)	22,000
WHEEL BASE	223"
EXTERIOR LENGTH (W/O LADDER)	32'-7"
EXTERIOR HEIGHT (W/AC)	11'-2"
EXTERIOR WIDTH (W/O MIRRORS)	99"
INTERIOR HEIGHT (LIVING AREA)	84"
AWNING SIZE	16'
FUEL (GAL)	55
LPG (LBS)	40.9
FRESH/WASTE/GRAY WATER (GAL)	40 / 28 / 28
WATER HEATER (GAL)	Tankless
FURNACE (BTUS)	30,000
EXTERIOR STORAGE CAPACITY (CU. FT.)	55.7
HITCH WEIGHT RATING (LBS)	8,000

# FLOOR PLANS



## 31W

# SPECIFICATIONS

31W

CHASSIS	Ford
GROSS VEHICLE (GVWR)	14,500
GROSS COMBINED (GCWR)	22,000
WHEEL BASE	223"
EXTERIOR LENGTH (W/O LADDER)	32'-2"
EXTERIOR HEIGHT (W/AC)	11'-2"
EXTERIOR WIDTH (W/O MIRRORS)	99"
INTERIOR HEIGHT (LIVING AREA)	84"
AWNING SIZE	16'
FUEL (GAL)	55
LPG (LBS)	40.9
FRESH/WASTE/GRAY WATER (GAL)	40 / 28 / 28
WATER HEATER (GAL)	Tankless
FURNACE (BTUS)	30,000
EXTERIOR STORAGE CAPACITY (CU. FT.)	55.7
HITCH WEIGHT RATING (LBS)	8,000



# INTERIOR OPTIONS



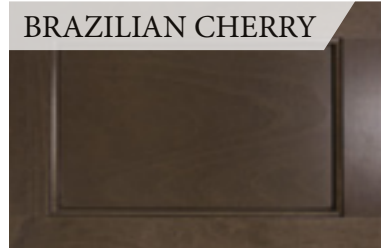
IMPERIAL



OCEAN PEARL



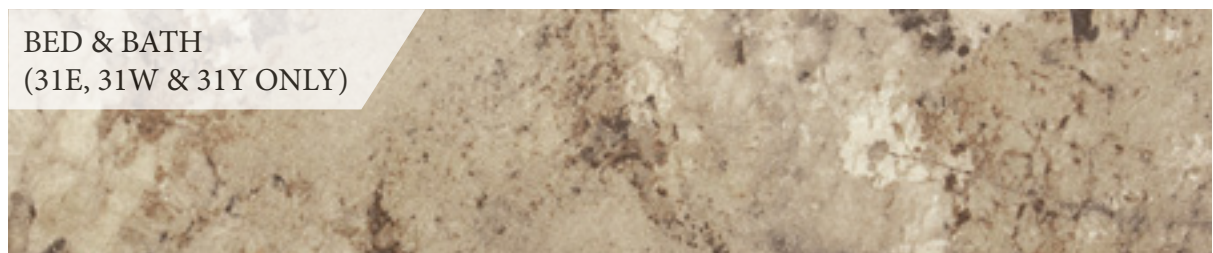
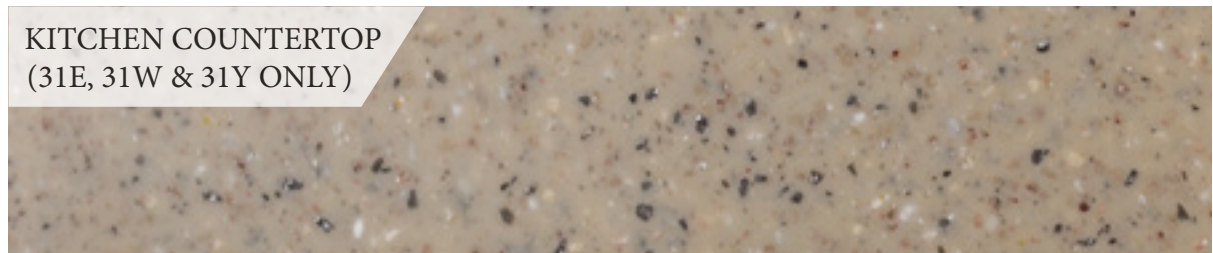
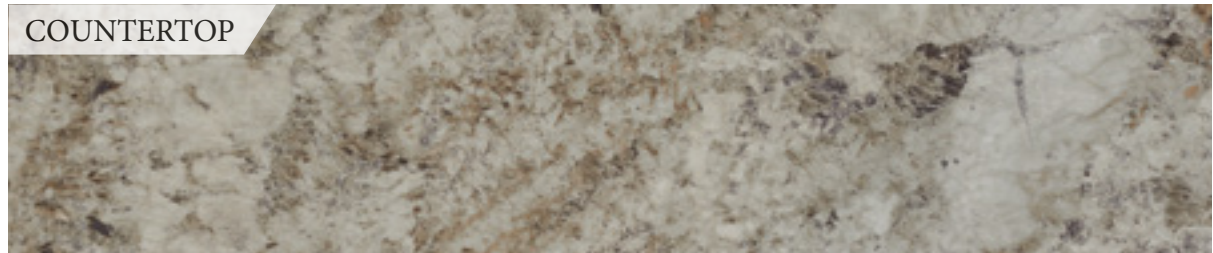
SADDLEBACK



FLAT PANEL



RAISED PANEL  
(31B, 31E, & 31W)





# SPECIAL FEATURES CLASS C



Winegard® Connect™ 2.0  
WiFi / 4G / TV Antenna



Touchscreen Dash Radio  
and Back-up Monitor with  
Integrated Camera



HDMI Video Distribution



Solar Prep -  
Includes Solar Controller



360° Siphon® Vent Cap for  
Tank Odor Prevention



Black Tank Flush System



7' Interior Ceiling Height



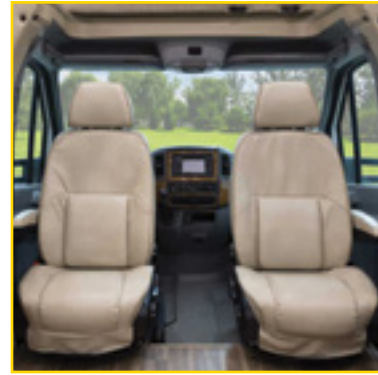
SiriusXM® Radio



# SPECIAL FEATURES SPRINTER



Winegard® Connect™ 2.0  
WiFi / 4G / TV Antenna



Swivel, Leatherette  
Captain's Chairs



Tankless Water Heater



Solar Prep -  
Includes Solar Controller



360° Siphon® Vent Cap for  
Tank Odor Prevention



Black Tank Flush System



Back-up Monitor with  
Integrated Rear Camera



SiriusXM® Radio



# FEATURED HIGHLIGHTS CLASS C

## CONSTRUCTION & EXTERIOR

- ◆ Slick Fiberglass Exterior with Standard Graphics Package (N/A 31B, 31E & 31W)
- ◆ MEGA-Storage™ Compartment (22B, 22E, 25V & 28Z)
- ◆ Portable Folding Table (28Z)
- ◆ Frameless Windows (31B, 31E & 31W)

## CONSTRUCTION & EXTERIOR OPTIONS

- ◆ Electric Stabilizing System (STD 24F & 27R - OPT 22B, 22E, 25V, 26B & 28Z)
- ◆ Automatic Leveling Jacks (STD 31B, 31E, & 31W)
- ◆ HD-MAX® Exterior with Graphics Package (STD 31B, 31E & 31W)
- ◆ Full Body Paint Package with Gel-Coated Sidewalls & Protective Mask (OPT 31B, 31E & 31W)
- ◆ Exterior 32" TV on Manual Swivel with Bluetooth® Sound Bar & Radio

- ◆ Drop Down Stairwell Entrance Step with Accent Light Under Step on Separate Switch

## AUTOMOTIVE & COCKPIT

- ◆ Touchscreen Dash Radio with Back-Up Monitor & Integrated Camera
- ◆ Dash Radio Navigation (31E & 31W)
- ◆ SiriusXM® Radio Tuner & Antenna

## AUTOMOTIVE & COCKPIT OPTIONS

- ◆ Heated/Remote Exterior Mirrors with Integrated Side View Cameras (STD 31B, 31E & 31W)
- ◆ Leatherette Captain's Chairs
- ◆ Power Driver's Seat - Ford® Chassis Only (27R, 28Z, 31B, 31E & 31W)
- ◆ Wood Dash Appliqué
- ◆ Cockpit Carpet Mat
- ◆ Keyless Entry & Valve Stem Extenders (STD 31B, 31E & 31W)
- ◆ Stainless Steel Wheel Liners (STD 31E & 31W)

## INTERIOR

- ◆ Leatherette Jack-Knife Sofa (26B, 27R, 28Z, 31B, 31E & 31W)
- ◆ Leatherette Dream Dinette® Booth
- ◆ USB Charging Port at Dinette
- ◆ 40" LED TV in Living Area
- ◆ Winegard® Connect™ 2.0 4G LTE Router & WiFi Extender
- ◆ Wall Cubby with Net & USB Charging Port in Living Area & USB Charging Center in Bedroom
- ◆ Queen Size Bed (N/A 25V & 27R)
- ◆ King Size Bed (27R)
- ◆ Two (2) Twin Beds with Upholstered Covers & King Conversion (25V)
- ◆ Bunk Beds (31E)
- ◆ Bedroom 12-volt Outlet for CPAP Machine
- ◆ Double Door Refrigerator (N/A 31W)
- ◆ Residential Refrigerator with Ice Maker (31W)
- ◆ Recessed 3-Burner Gas Cooktop with Glass Cover (N/A 31B, 31E & 31W)

- ◆ Microwave Oven (N/A 31B, 31E & 31W)
- ◆ Flip-Up Countertop Extension (22B, 22E, 24F, 25V, 27R & 31B)
- ◆ Pop-Up Countertop Outlet & Charging Center (27R, 28Z, 31B, 31E & 31W)

## INTERIOR OPTIONS

- ◆ Leatherette Theater Seating IPO Sofa (28Z, 31B & 31W)
- ◆ 32" TV in Bedroom (N/A 22E / STD 31B, 31E & 31W)
- ◆ Two (2) 15.5" TV's & DVD Player in Bunk Bed Area (31E)
- ◆ Cab-Over Child Safety Net
- ◆ Single Child Safety Tether in Dinette
- ◆ 12-volt Attic Fan with Cover in Cab-Over Bunk
- ◆ 12-volt Attic Fan in Bedroom (N/A with Dual Roof A/C's)
- ◆ Recessed 3-Burner Gas Cooktop/Oven with Glass Cover (N/A 31B, 31E & 31W)
- ◆ Convection Microwave Oven (N/A 31B, 31E & 31W)

## ELECTRICAL & PLUMBING

- ◆ Onan® RV QG 4000 Gas Generator
- ◆ Automatic Generator Start (31W)
- ◆ 1800-watt Inverter (31W)
- ◆ Battery Tray for Four (4) Batteries (31B, 31E & 31W)
- ◆ Exterior LP Connection (27R, 28Z, 31B, 31E, 31B & 31W)
- ◆ Solar Prep - Includes Solar Controller
- ◆ 6-gallon DSI Gas/Electric Water Heater with Bypass System (N/A 31B, 31E & 31W)
- ◆ Rapid Camp® Wireless Control System (31B, 31E & 31W)

## ELECTRICAL & PLUMBING OPTIONS

- ◆ 15,000 IPO 13,000 BTU Roof Front Air Conditioner (STD 31B, 31E & 31W)
- ◆ Dual 11,000 BTU Roof Air Conditioners IPO 15,000 BTU Air Conditioner (31B, 31E & 31W)

- ◆ Holding Tanks with Heat Pad (STD 31B, 31E & 31W)
- ◆ Outside Shower (STD 31B, 31E & 31W)
- ◆ Second Auxiliary House Battery (STD 31W)

## PREMIER PACKAGE – 31B, 31E & 31W

- ◆ 2-Burner Gas Cooktop with Single Induction Cooktop
- ◆ 30" Over-the-Range Convection Oven
- ◆ Solid Surface Kitchen Countertop
- ◆ Shower with Glass Door
- ◆ Premium Window Privacy Roller Shades
- ◆ Whole Coach Water Filtration System
- ◆ Enclosed Sewer Area for Sewer Tank Valves
- ◆ Tankless Water Heater
- ◆ Frameless Windows

**For a complete listing of available features, visit [thormotorcoach.com/chateau](http://thormotorcoach.com/chateau).**



# FEATURED HIGHLIGHTS SPRINTER

## CONSTRUCTION & EXTERIOR

- ◆ HD-MAX Exterior with Graphics Package
- ◆ MEGA-Storage™ Compartment (24BL)
- ◆ Lighted Rotocast Storage Compartments
- ◆ Flush Mount Radius Compartment Doors
- ◆ Electric Entry Step with Accent Light Under Step on Separate Switch

## CONSTRUCTION & EXTERIOR OPTIONS

- ◆ Full Body Paint Package with Gel-Coated Sidewalls & Protective Mask
- ◆ Exterior 32" LED TV on Manual Swivel with Bluetooth® Sound Bar & Radio

## AUTOMOTIVE & COCKPIT

- ◆ Touchscreen Dash Stereo
- ◆ Back-up Monitor with Integrated Camera
- ◆ Deluxe Heated/Remote Exterior Mirrors
- ◆ Leatherette Swivel Captain's Chairs
- ◆ Keyless Entry System
- ◆ Stainless Steel Wheel Liners
- ◆ Valve Stem Extensions on All Wheels
- ◆ Dash Applique

## AUTOMOTIVE & COCKPIT OPTION

- ◆ Cockpit Carpet Mat

## INTERIOR

- ◆ 32" TV on Manual Swivel in Living Area (24BL)
- ◆ 40" TV in Living Area (24DS)
- ◆ HDMI Video Distribution Box
- ◆ Winegard® Connect™ 2.0 4G LTE Router & WiFi Extender
- ◆ Wall Cubby with Net & USB Charging Port
- ◆ Leatherette Dinette Booth
- ◆ USB Charging Port at Dinette
- ◆ Leatherette Theater Seating with Footrests (24DS)
- ◆ Double Door Refrigerator
- ◆ Recessed 3-Burner Gas Cooktop with Glass Cover (24BL)

- ◆ 2-Burner Gas Cooktop with Glass Cover & Electric Start (24DS)
- ◆ Convection Microwave Oven
- ◆ Flip-Up Countertop Extension
- ◆ 12-volt Ceiling Vent in Kitchen
- ◆ Window Privacy Roller Shades
- ◆ Shower with Anti-Bacterial Curtain
- ◆ Queen Size Bed (24BL)
- ◆ Full Size Bed (24DS)
- ◆ Bedroom 12V Outlet for CPAP Machine

## INTERIOR OPTIONS

- ◆ 32" TV in Bedroom

- ◆ Single Child Safety Tether in Dinette (24BL)
- ◆ Cab-Over Bunk Safety Child Net
- ◆ 12-volt Attic Fan with Cover in Cab-Over
- ◆ 12-volt Attic Fan with Cover in Bedroom

## ELECTRICAL & PLUMBING

- ◆ Onan® RV QG 3600 LP Generator
- ◆ 30-amp Shoreline Power Cord
- ◆ Automatic Shoreline-to-Generator Transfer Switch
- ◆ Battery Disconnect Switch
- ◆ 13,500 BTU Front Air Conditioner
- ◆ Solar Prep - Includes Solar Controller

- ◆ Exterior LP Connection
- ◆ Tankless Water Heater
- ◆ Black Tank Flush System
- ◆ Outside Shower
- ◆ Systems Control Center

## ELECTRICAL & PLUMBING OPTIONS

- ◆ Second Auxiliary House Battery
- ◆ Holding Tanks with Heat Pads

For a complete listing of available features, visit [thormotorcoach.com/chateau-sprinter](http://thormotorcoach.com/chateau-sprinter).





**Made to fit.**

**IMPORTANT—PLEASE READ:** This brochure reflects product design, fabrication, material, components and specifications at the date of printing, which date is disclosed below. Please visit us online at [ThorMotorCoach.com](http://ThorMotorCoach.com) or consult with your selling dealership for the latest in standards, options, specification and technical information. Photographs in the brochure may depict optional equipment or may only be available in certain floor plans. Components, appliances and the chassis may have been manufactured in a calendar year before the vehicle's designated model year. All capacities are approximate. The actual length of the vehicle may differ from that indicated in the brochure due to variances in the manufacturing processes and/or installed components. All dry weights are based on standard model features and do not include optional features or equipment. Component part and appliance manufacturers issue limited warranties covering portions of the vehicle not covered under the limited warranty we issue. Copyright Thor Motor Coach, Inc. © OH 11/01/19



[thormotorcoach.com/chateau](http://thormotorcoach.com/chateau)

P.O. Box 1486, Elkhart, IN 46515 Sales Department: 800.860.5658 Customer Service: 877.855.2867