

## RENEGADE WARRANTY

Renegade MY 2021 motorhomes are covered by a 1-year unlimited miles limited warranty, plus a 3-year 36,000-mile limited structural warranty.

All Renegade motorhome chassis, engines and transmissions, and drivetrain warranties are provided and administered by their respective manufacturers. For specific information about these warranties, ask your dealer or contact Renegade RV.



**Renegade**  
RV  
REVGROUP

*Confidence to go anywhere*

52216 SR 15 Bristol, IN 46507

888.522.1126 | [RenegadeRV.com](http://RenegadeRV.com)

Features and options may vary from descriptions without notice.

**VALENCIA**  
by Renegade

2021

EXTREME LUXURY

EXTREME PURPOSE

EXTREME DURABILITY



*Renegade*  
RV

REV GROUP

*Confidence to go anywhere*





## Renegade VALENCIA by Renegade

Family-friendly with the glamorous details you expect from Renegade, the Valencia has everything you need for fun and luxurious getaways. Solid hardwood cabinets, polished surface countertops and stainless steel appliances are just a few of the beautifully designed features you will find in this RV. Modern furniture and an abundance of storage throughout allows you to travel in comfort and style with the quality that comes with a Renegade.

### **Featured to the left:**

Here we have the very popular Valencia 38RB (Cracked Pepper Décor shown). This floor plan is a bath and a half, showing the Master bedroom with a king bed and spacious private rear bath. The half bath is roomy and conveniently accessible while on the highway. The spacious cabover bunk area provides an additional sleeping or storage area. The main salon shows the booth dinette and optional theater seating, the guitar, however is not an option, sorry.

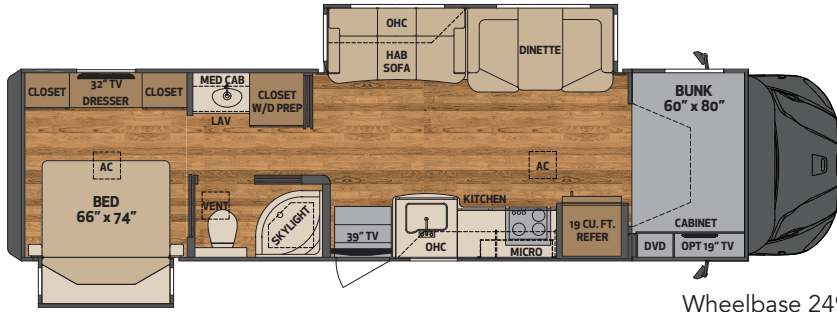
# THE *Renegade* VALENCIA by Renegade AT A GLANCE

Exterior height	<b>12'10"</b>	Fuel capacity	<b>100 Gallons</b>
Exterior width	<b>99<sup>1</sup>/<sub>4</sub>"</b>	Fresh water capacity	<b>150 Gallons</b>
Exterior length	<b>35'8" - 38'2"</b>	Grey water capacity	<b>75 Gallons</b>
Interior height	<b>84"</b>	Black water capacity	<b>75 Gallons</b>
Interior width	<b>95<sup>1</sup>/<sub>2</sub>"</b>	LP tank	<b>20 Gallons</b>



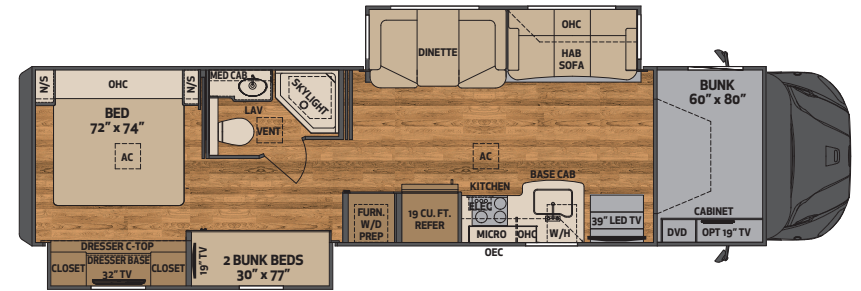
## KEY FEATURES

- 360HP w/ 3000MH Allison Transmission
- Multiplex system with color touch panel & Bluetooth app control
- Four full paint color options
- Four-Point automatic hydraulic leveling system
- Electric lateral arm awning with integrated LED lights
- Solid hardwood cabinets and solid surface countertops



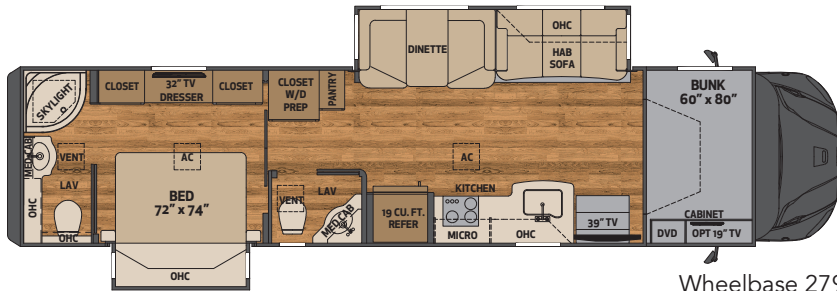
Wheelbase 249"

**35MB** 35' mid bath, 2 slides



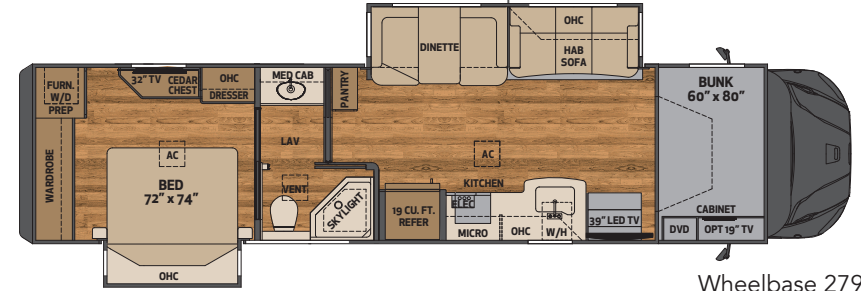
Wheelbase 279"

**38BB** 38' mid bath, 2 slides



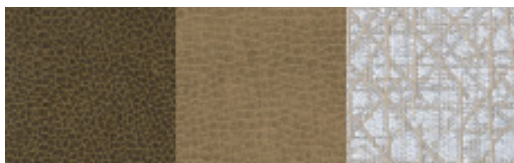
Wheelbase 279"

**38RB** 38' mid and rear bath, 2 slides

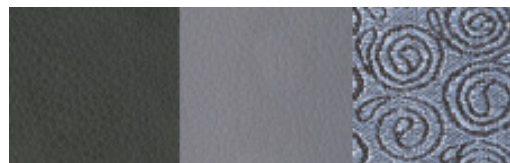


Wheelbase 279"

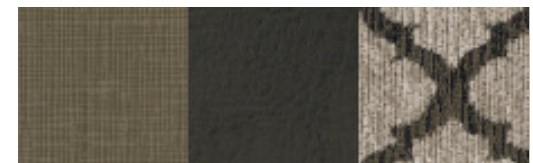
**38RW** 38' mid bath, rear wardrobe closet, 2 slides



ICED LATTE



CRACKED PEPPER



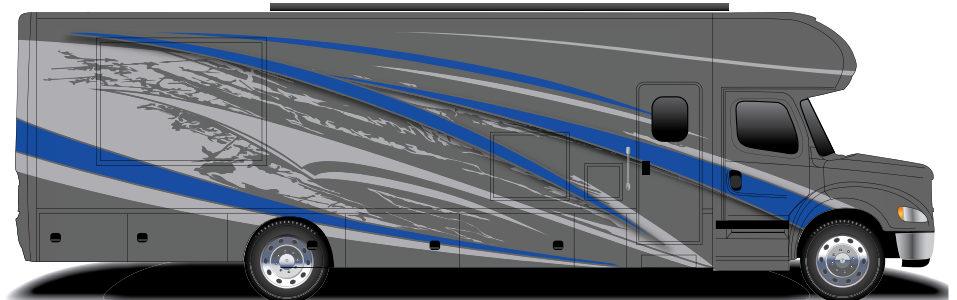
DRIFTWOOD

*Renegade* **VALENCIA**  
by Renegade

PAINT OPTIONS



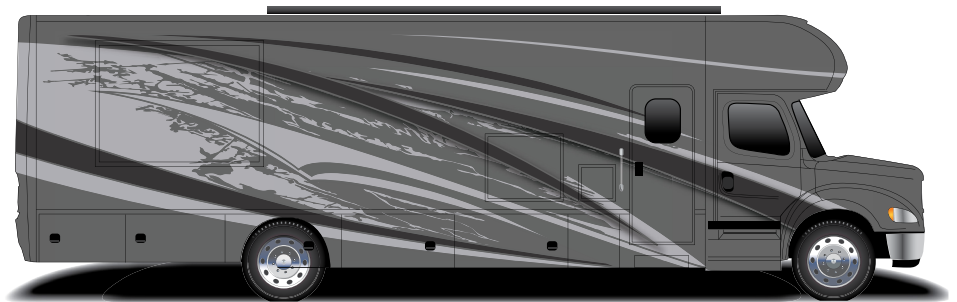
CRIMSON



ROYAL



RUSSET



GRAPHITE

## CAB/CHASSIS

Freightliner chassis S2RV 31,000 lb. GVWR, 46,000 lb. GCWR  
Cummins ISB 6.7L 360HP, 800 lb. ft. torque  
Allison 3000MH 6-speed automatic transmission with electronic push button shifter  
Cummins VG engine braking with dash switch  
Aluminum cab construction designed for occupant protection  
One-piece panoramic cab windshield  
Premium freightliner heat/sound insulation package  
Freightliner heavy duty chromed steel 3 piece front bumper  
LED headlight assemblies  
Power windows and door locks  
Power/heated remote control mirrors  
Tilt & telescoping steering wheel w/ electronic cruise control  
Air ride driver and passenger seat pedestals with swivels  
Soft touch driver/passenger seats w/ armrests  
Deluxe cab carpeting with matching floor mats  
Single 100 gallon fuel tank with side mounted fill  
Airliner rear air ride suspension  
Auxiliary air chuck and hose

## CONSTRUCTION

2" vacuum laminated sidewalls w/ welded tubular aluminum framing  
Welded aluminum framed wall cutouts  
Welded tubular aluminum roof truss system w/ framed cutouts  
One piece crowned fiberglass roof surface  
"Super Sandwich" floor construction w/ galvanized vapor barrier includes:  

- 3/4" fir plywood deck over 2 x 4 wood-framed residential floor
- 2" welded steel floor joist system
- Mounted to 3" steel longitudinal floor beams
- 3.5" premium grade sound deadening and thermal insulation in floor

## EXTERIOR

Powder-coated steel storage compartments w/ carpeted lining  
Exterior entry door assist handle  
RV entrance door w/ screen, deadbolt, frameless window, & pleated shade  
Girard GG lateral arm electric awning w/ LED lights  
Aluminum wrapped auto deploy/retract awnings over all slide outs  
12,000 lb. hitch, 7 way tow connector  
LED brake, turn & high mount brake lights  
One piece panoramic cab windshield  
Fiberglass molded cab entry steps

## ELECTRICAL SYSTEMS

8KW Onan quiet diesel generator  
Automatic generator start system  
3,000W magnum hybrid Inverter  
(1) 8D AGM house battery  
Multiplex lighting system with smartphone app  
Solar charging system pre-wire  
Central command center cabinet  
50 amp electrical panel  
12V holding tank heaters, grey & black tanks

## INTERIOR

Soft touch sofa with queen size slide-a-bed sleeper  
Soft touch dinette w/ convertible bed & solid surface table top  
Premium vinyl flooring in living quarters, hallway and bath  
Premium hardwood cabinets w/shaker style doors  
Satin nickel cabinet door and drawer pulls  
Soft close full extension ball bearing drawer guides throughout  
slide-out pantry with adjustable shelves (select floorplans)  
Polished solid surface countertops throughout  
Stonecast deep bowl kitchen sink with solid surface covers  
Wavy glass backsplash tile  
LED wall and dinette décor lighting  
Manual day/night roller shades  
Energy efficient LED flush mount ceiling lighting throughout  
Decorative vinyl wall covering with coordinating accent color in slide rooms  
Designer bedspread w/ pillows  
iRelax memory foam mattress (66" x 74" mini king-MB only) (72" x 74" king-all except MB)  
60" x 80" sliding cabover bunk sleeper with R/S window and media cabinet  
Full length wardrobe w/removable bottom shelf & shoe storage (select floorplans)

## APPLIANCES

18.0 cu.ft. residential stainless steel refrigerator with icemaker  
Recessed sealed 3 burner stainless steel LP cooktop  
Stainless steel convection microwave oven  
35,000 BTU LP gas furnace with electronic ignition  
10 gal. gas/electric water heater  
(2) 15,000 BTU low profile roof A/C w/heat pumps, plumbed condensation lines  
Ducted heating and air conditioning  
Pre-wired & plumbed for optional washer/dryer  
Carbon monoxide, LP & smoke detectors, fire extinguisher  
Winterization kit

## BATH

Deluxe hardwood vanity and medicine storage cabinets  
Fiberglass shower with glass door  
Shower skylight  
12V high capacity on demand water pump  
Whole house water filtration system  
Polished solid surface countertop w/ solid surface sink  
Deluxe satin nickel bath faucet & adjustable shower head

## ENTERTAINMENT SYSTEM

Garmin touch screen, bluetooth, GPS, RV maps and color camera monitor  
Upgraded cab sound system - JBL 5.25" Dash and 6.25" ceiling speakers  
Sirius/XM ready (requires customer subscription)  
Color rear and side view cameras  
Soundbar home theater w/ bluetooth streaming and wireless subwoofer  
39" LED TV in living area / 32" LED TV in bedroom  
BluRay DVD player with remote in living area  
Ext. Ent. Ctr. w/ 32" LED TV, AM/FM/CD/DVD player, USB charging  
Exterior park cable hookup  
Rooftop antenna with standard and HD signal capability  
Pre-wired for In-motion and HD rooftop satellite systems (boxes not included, TV & radio services requires customer subscription)

## POPULAR OPTIONS

Theater seating  
Storage ottoman  
Three roof-mounted 175 watt (each) solar panels  
Table with credenza and free standing dinette chairs  
Premium one-piece vinyl floor in bedroom  
Winegard In-motion satellite system  
Winegard Trav'ler satellite system  
LP quick disconnect LP line for gas grill  
24" LED TV in cabover bed area  
Brake controller  
Diamond shield paint protection  
13cu.ft. propane refer  
W/D stack  
Winegard 2.0 Antenna w/ Wi-Fi etc.