

 **SPIRIT**

2007





 SMARTSPACE
titanium TOUCH™
STAINLESS
[WEB](#)

SOMETHING FOR EVERYONE

Fun to drive and a joy to own, the 2007 Itasca Spirit® offers everything you want in a motor home in a convenient Class C package. Whether you travel alone or with family, the Spirit has a floorplan that is just right for you. This year the 31C and the new 31H feature large exterior rear storage areas.

They are examples of our SmartSpace™ design philosophy that makes the most of available space to make your Spirit more user-friendly and functional than ever before. Check out the 2007 Spirit for yourself and see how SmartSpace makes a great motor home experience even better.

YOU'RE WELCOME

Your motor home should feel like home. That's why Spirit greets you with contemporary cabinetry featuring pewter hardware and your choice of Honey Cherry or Washed Maple wood finishes. An available Interior Upgrade Package offers enhanced features such as rope accent lighting above the galley or lounge and bedroom overhead cabinets, a galley sink cover, day/night pleated blinds, a Titanium Touch stainless refrigerator insert, and a dashboard appliqué.

Upscale galley features include an Apollo™ range/convection oven/microwave, and a flip-up countertop (NA 25F) for added work space. You'll enjoy crisp, clear water when you select the water filtration system.

A single thermostat controls both the furnace and ceiling-ducted air conditioning for total climate control. A heat pump can also be added to provide heat on cool mornings without starting the furnace.

Yes, the Spirit has something for everyone, including an overhead bunk or an available front entertainment center with a 27" Sony® TV and decorative rope lighting.

WEB Select a Key Feature

The **WEB** icon designates a Winnebago Industries Key Feature. For further in-depth information and photos, use this drop-down menu or click on the 'Key Features' page at winnebagoind.com.

31H SHADOW DANCE WITH HONEY CHERRY



FRONT ENTERTAINMENT CENTER Love movies? Add the Home Theater Sound System for a complete movie experience. It includes a receiver, amplifier, DVD player, five surround-sound speakers and a subwoofer.



GALLEY The 3-in-1 range/microwave/convection oven by Apollo features a stainless steel cooktop with three high-output sealed burners and a convection oven that cooks and browns like a conventional oven in half the time.



BED The bedrooms in the 27L and 29B include spacious rear slideouts. Each bedroom includes a queen bed and a mirrored wardrobe. The 29B even provides a vanity area.



OVERHEAD BUNK Enhance the bunk with a 20" LCD TV that conveniently tucks away and a stereo system with AM/FM radio, CD/DVD, alarm clock, MP3 input and a headphone jack.



DRAWER SLIDES Full-extension drawer slides provide easy access to your stored items.



BATH/SHOWER A flexible showerhead and a retractable shower door that squeegees itself clean are just a couple of the convenient features you'll find in this bath.

DASH Drivers and passengers enjoy the convenience of power door locks, power windows and the stylish look of the Regal Burl dash appliqué, one of several upgrades included with the available Interior Upgrade Package.



RV-RADIO
SIRIUS
WEB

DRIVER'S DELIGHT

We took every effort to make the Spirit a pleasure to drive. The controls are intuitive and close at hand. The Spirit even offers an LCD rearview monitor for easier backing and maneuvering. You can also choose UltraLeather™ cab seats for a more comfortable ride.

The RV Radio® includes AM/FM stereo, CD player, weather band, and large, easy-to-use buttons and knobs. Upgrade your RV Radio with the available Sirius® Satellite* radio package. Sirius brings you 120 channels of crystal clear programming and a free six-month subscription.

Packing for a long trip can be quite a feat. If you're interested in a smaller motor home, it's nice to know the Winnebago Industries® engineers had Smart Storage™ in mind when designing the Spirit. With Smart Storage you know every inch of available storage space is designed for maximum user benefit.

Whether it's the StoreMore® slideout system on the 31C and 31H or the large rear storage areas on 25F, 31C and 31H, you'll benefit from Smart Storage on every model.



WEB STOREMORE The StoreMore slideout system on the 31C and 31H was pioneered by Winnebago Industries to make storage more accessible. It allows storage bays to extend with the slideroom, letting you load and unload without crawling on your hands and knees.



EXTERIOR ENTERTAINMENT CENTER Includes an AM/FM stereo, CD player, 12-volt DC receptacle, TV jack, 110-volt outlet, two speakers and a removable TV table.



WEB SMART STORAGE A unique rear storage compartment and a side storage bin are part of the Smart Storage design in the 31C and 31H.



WEB TRUELEVEL Eliminate the guesswork when it comes to tank levels with our exclusive TrueLevel™ holding tank monitoring system. It incorporates detector cells that detect liquid levels from outside the tank. No probes means no more corrosion or buildup, just accurate readings time after time.

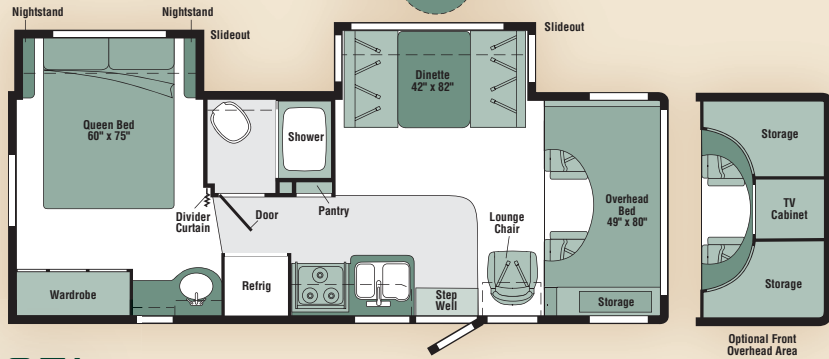
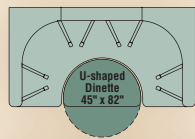
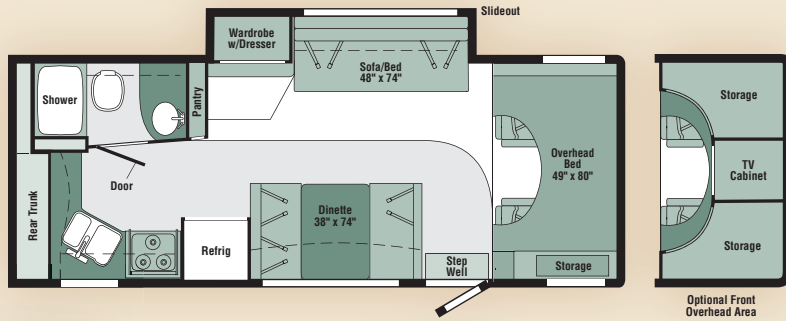


AVAILABLE REARVIEW MONITOR The LCD screen mounts between the sunvisors for optimal visibility when backing and maneuvering.

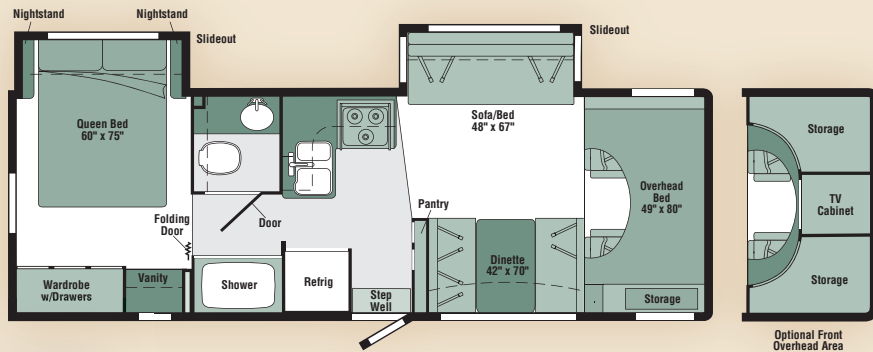
*RV Radio and Sirius Satellite radio package are available with Ford chassis only. Sirius not available in Canada.

Carpet
 Vinyl Floorcovering
 Seat Belts

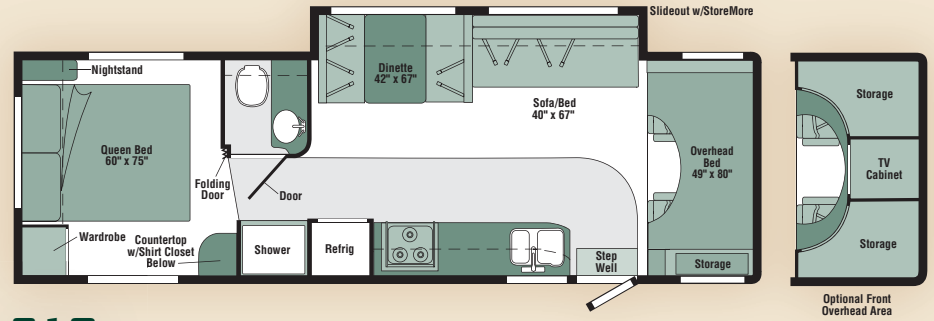
Note: Dimensions shown are for sleeping space only and may vary due to styling differences. Dashed lines denote overhead storage areas.



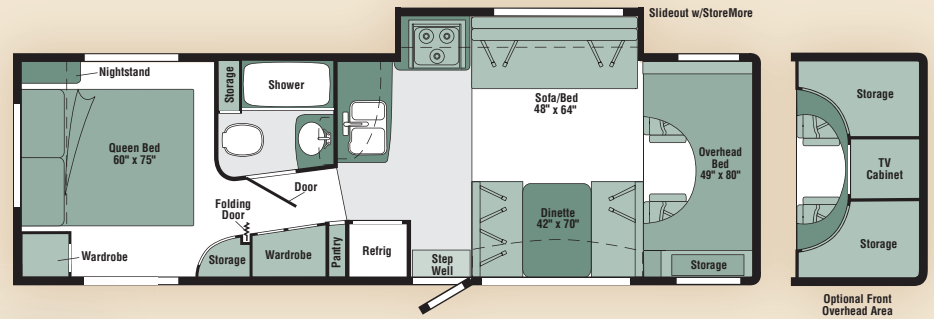
27L



29B



31C



31H
NEW

WEIGHTS & MEASURES	25F	27L	29B	31C	31H NEW
Length	25'11" ^A / 26'9" ^B	28' ^A / 28'11" ^B	29'11" ^A / 30'10" ^B	31'5" ^A / 32'3" ^B	32'1" ^A
Exterior Height ¹	11'2" ^A / 11'6" ^B	11'2" ^A / 11'6" ^B	11'3" ^A / 11'5" ^B	11'5" ^A / 11'7" ^B	11'4" ^A
Exterior Width ²	8'5.5"	8'5.5"	8'5.5"	8'5.5"	8'5.5"
Exterior Storage ³ (cu. ft.)	76.3	19.9	59.6	93	80.7
Awning Length	17'	18'	14'	16'	16'
Interior Height	6'8"	6'8"	6'8"	6'8"	6'8"
Interior Width	8'	8'	8'	8'	8'
Freshwater Capacity w/Heater ⁴ (gal.)	39	39	39	42	42
Holding Tank Capacity - Black/Gray ⁴ (gal.)	39 / 29	34 / 39	30 / 39	35 / 28	27 / 38
LP Capacity ⁵ (gal.)	18	18	18	18	18
Fuel Capacity (gal.)	55	55	55	55	55
GCWR ⁶ (lbs.)	20,000 ^A / 17,600 ^B	20,000 ^A / 17,600 ^B	20,000 ^A / 17,600 ^B	20,000 ^A / 17,600 ^B	20,000 ^A
GVWR (lbs.)	14,050 ^A / 14,050 ^B	14,050 ^A / 14,050 ^B	14,050 ^A / 14,050 ^B	14,050 ^A / 14,050 ^B	14,050 ^A
GAWR - Front (lbs.)	4,600 ^A / 4,600 ^B	4,600 ^A / 4,600 ^B	4,600 ^A / 4,600 ^B	4,600 ^A / 4,600 ^B	4,600 ^A
GAWR - Rear (lbs.)	9,450 ^A / 9,450 ^B	9,450 ^A / 9,450 ^B	9,450 ^A / 9,450 ^B	9,450 ^A / 9,450 ^B	9,450 ^A
Wheelbase	168" ^A / 169" ^B	182" ^A / 183" ^B	190" ^A / 191" ^B	220" ^A / 221" ^B	215" ^A

AUTOMOTIVE/CHASSIS	25F	27L	29B	31C	31H
A Ford® E450 Chassis – 6.8L SOHC Triton® V10 engine, 305-hp, automatic transmission, TorqShift™ 5-speed with tow/haul feature, 4-wheel ABS, 130-amp. alternator, dual air bags, Trailer Hitch ⁶ 5,000-lb. drawbar/350 lbs. maximum vertical tongue weight & wiring w/7-pin connector, Wheel Liners stainless steel	S	S	S	S	S
B Chevrolet® Chassis ⁷ – 6.0L 6000 Vortec V8 engine, 300-hp, automatic, 4-speed overdrive, 4-wheel ABS, 145-amp. alternator, dual air bags, Trailer Hitch ⁶ 3,500-lb. drawbar/350 lbs. maximum vertical tongue weight & wiring w/7-pin connector, Wheel Liners stainless steel	0	0	0	0	0
Air Springs auxiliary rear, Wheels stylized aluminum	0	0	0	0	0

CAB AREA & DRIVER CONVENIENCES	25F	27L	29B	31C	31H
Beverage Holder , Cab Seats w/3-point adj. seat belts, armrest, lumbar support, multi-adj. slide/recline, Cigarette Lighter/12-volt DC Powerpoint , Cruise Control , Curtain cab divider, Mirrors exterior, manual adjust, Power Cab Door Locks driver, passenger & main entry, Power Windows , Monitor System rearview, cable ready, Steering Wheel tilt w/power-assist, Trim Panels driver & passenger doors	S	S	S	S	S
Cab Seats (UltraLeather™)	0	0	0	0	0
Mirrors exterior electric remote w/defrost	0	0	0	0	0
Monitor System rearview w/single camera, LCD monitor	0	0	0	0	0

ENTERTAINMENT	25F	27L	29B	31C	31H
RV Radio ⁸ (w/Ford chassis) AM/FM stereo/CD w/weather band, speakers (4), remote controls (2) one hand-held, one mounted on steering wheel, Radio (w/Chevy chassis) AM/FM stereo/CD, Radio Power Switch main/auxiliary, Satellite System Ready, TV Enhancement Package antenna (amplified), 12-volt DC powerpoint(s), interior jack(s), coax wiring, cable input, Telephone Input modular connector, interior jack	S	S	S	S	S
Entertainment Center (exterior) AM/FM radio, CD player w/remote, DC receptacle, AC duplex receptacle, TV jack, radio antenna, removable TV table, speakers (2), lockable compartment	0	0	0	0	0
Entertainment Center (interior front overhead) TV AC 27" w/remote, Home Theater Sound System w/AM/FM receiver, DVD player, amplifier, speakers (5), subwoofer, accent rope lighting above cabinet, video selection system	0	0	0	0	0
Satellite Dish Antenna RV digital, elevation sensing unit, manual	0	0	0	0	0
Sirius® Satellite System ⁷ (available w/Ford chassis only) antenna, receiver, six month complimentary subscription	0	0	0	0	0
TV 20" LCD (front bunk area) stereo system w/AM/FM radio, CD/DVD player, front TV jack (plays MP3), alarm clock, headphone jack, remote, speakers (2)	0	0	0	0	0

INTERIOR	25F	27L	29B	31C	31H
Bunk front overhead w/mattress, privacy curtain, storage cabinet, bunk ladder, Ceiling fabric, Light (shower) w/wall switch, Lights (ceiling) incandescent w/wall switches, Roof Vent nonpowered (front overhead bunk), powered (bath), Shades pleated, (lounge, dinette & bedroom), mini blinds (bath & galley)	S	S	S	S	S
Interior Upgrade Package accent rope lighting above cabinets in galley or lounge area & bedroom, Regal Burl dash & beverage tray appliqué, cab floor mats (Ford only), lavatory faucet single control, wood sink cover, decorative picture, throw pillows (2), pleated day/night blinds in lounge, dinette & bedroom, refrigerator insert (Titanium Touch stainless finish)	0	0	0	0	0
Roof Vent nonpowered, lounge	S	S	S		S
Roof Vent powered ventilator fan, front overhead bunk or lounge	0	0	0	0	0
Roof Vent nonpowered, bedroom	S	S	S	S	S

FURNITURE	25F	27L	29B	31C	31H
Dinette w/access to storage below	S	S	S	S	S
Dinette U-shaped w/access to storage below, slideout baskets	0				
Lounge Chair swivel/slide	S				
Sofa	S		S	S	S

GALLEY	25F	27L	29B	31C	31H
Faucet single-control, Moen® Range 3-burner w/convection oven/microwave, Apollo™ Range Hood vented w/light & fan, Refrigerator/Freezer double-door, Norcold®	S	S	S	S	S
Countertop flip-up extension		S	S	S	S
Pantry	S	S	S		S
Water Filtration System	0	0	0	0	0

BATH	25F	27L	29B	31C	31H
Cabinet lavatory, Cabinet medicine, Clothes Rod removable, Faucet (Lavatory) dual-control, Faucet (Tub and/or Shower) dual-control w/flexible showerhead, Shower Door retractable, Skylight Shower Door glass	S	S	S	S	S
			0	0	

BEDROOM	25F	27L	29B	31C	31H
Bed Serta® queen				S	S
Bed Serta, queen w/underbed storage		S	S		
Bedsread pillow shams, pillows		S	S	S	S

EXTERIOR	25F	27L	29B	31C	31H
Awning Rails w/rain gutters, Door entrance w/separate screen door, deadbolt lock, Entrance Door Step manual, Ladder hinged, Light porch w/interior switch, Mudflaps rear, Receptacle AC duplex, Running Boards painted steel, Sidewall Skin 1-piece smooth fiberglass, Storage Compartments w/trunk liner, KeyOne™ System (KeyOne NA on 25F rear trunk storage compartments)	S	S	S	S	S
Awning patio, vinyl	0	0	0	0	0
Entrance Door Step electric w/doorjamb switch	0	0	0	0	0
Trunk rear, backwall, two top-hinged doors, AC duplex receptacle, DC receptacle, shelves, storage baskets, storage hooks, trash container, TV antenna jack, plastic tub w/drain hole		S			
Trunk rear, backwall door, access door on the right, KeyOne System, carpet trunk liner, storage bin w/covers (2)				S	S

SYSTEMS	25F	27L	29B	31C	31H
HEATING/AC – Air Conditioning (Roof) 13,500 BTU, ceiling-ducted w/wall thermostat, Furnace 25,000 BTU, low-profile	S				
Air Conditioning (Roof) 14,800 BTU, ceiling-ducted w/wall thermostat, Furnace 30,000 BTU, low-profile		S	S	S	S
AC Heat Pump w/roof AC	0	0	0	0	0
ELECTRICAL – Auxiliary Start Circuit, Battery (Coach) Group 24 deep-cycle, Battery (Coach) disconnect system, Dual Battery charge control (automatic), Electrical Distribution System DC fuses, AC breakers, 45-amp. electronic converter/charger, Generator Prep Kit, Monitor Panel wall-mounted, battery condition gauge, generator hourmeter gauge, generator start/stop switch, holding tank levels, LP tank level, water heater lights, water heater switch, water pump switch, water tank level, Power Cord 30-amp., 25'	S	S	S	S	S
Batteries (Coach) (2) Group 24 deep-cycle, Generator 4,000-watt, Onan® MicroQuiet™ gas, Inverter DC/AC 300 watt (NA w/bunk)	0	0	0	0	0
PLUMBING/LP – Drain 1" water tank, Dump Valve manual, Sewer Hose 10', stores in drain valve compartment, Tank LP , permanent mount w/gauge, TrueLevel™ holding tank monitoring system, Water Heater 6-gallon, electronic ignition, LP gas, Water Hookup city, Water Pump demand, Water System Winterization Package water heater bypass valve & siphon tube, Water Tank Fill w/locking door	S	S	S	S	S
Drainage System ⁷ heated, electric, one heat pad per tank, pipe wraps, lighted on/off switch next to monitor panel, Wash Station exterior w/lighted pump switch, Water Heater 6-gallon, electronic ignition/110V, LP gas, w/motoraid, rear auto heater & energy management system	0	0	0	0	0

SAFETY	25F	27L	29B	31C	31H
Airbags driver & passenger, Assist Handle exterior, Assist Bar interior, Brakelamp high-mount, Bumpers front & rear, Child Seat Tether Anchor dinette, Detectors/Alarms LP leak, smoke, carbon monoxide, Fire Extinguisher 10 BC, Ground Fault Interrupter , Light(s) courtesy w/wall switch(es), Seat Belts cab, 3-point, Seat Belts lap (in selected areas), Window escape	S	S	S	S	S

WARRANTY ⁸	25F	27L	29B	31C	31H
12-month/15,000-mile basic limited warranty⁹ , 36-month/36,000-mile limited warranty on structure⁹ , 10-year limited parts & labor warranty on roof skin⁹	S	S	S	S	S

- The height of each model is measured to the top of the tallest standard feature and is based on the curb weight of a typically equipped unit. The actual height of your vehicle may vary by several inches depending on chassis or equipment variations. Please contact your dealer for further information.
- Spirit floorplans feature a wide-body design – over 96" In making your purchase decision, you should be aware that some states restrict access on some or all state roads to 96" in body width. Before making your purchase decision, you should confirm the road usage laws in the states of interest to you.
- The load capacity of your motor home is designated by weight, not by volume, so you cannot necessarily use all available space when loading your motor home.
- Capacities are based on measurements prior to tank installation. Slight capacity variations can result due to installation applications.
- Capacities shown are tank manufacturer's listed water capacity (W.C.). Actual filled LP capacity is 80% of listing due to overfilling prevention device on tank.
- Actual towing capacity is dependent on your particular loading and towing circumstances which includes the GVWR, GAWR, and GCWR as well as adequate trailer brakes. Please refer to the Operator's Manual of your vehicle for further towing information.
- Not available in Canada.
- See separate chassis warranty.
- See your dealer for complete warranty information.

NA Not Available

S Standard

O Optional

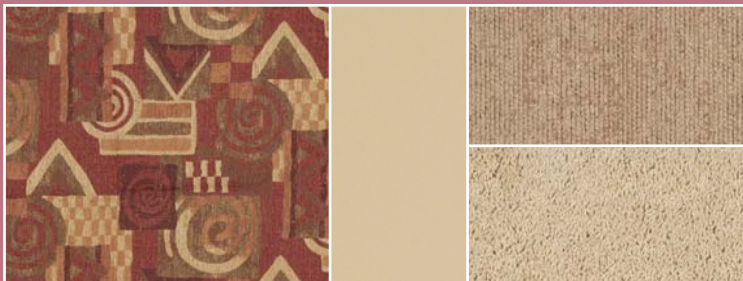
Not all items available in combination. See dealer for details.

Winnebago Industries® continuing program of product improvement makes specifications, equipment, model availability, and prices subject to change without notice. Comparisons to other motor homes are based on the most recent information available at printing.

INTERIOR DECOR

Choose from three fabric selections and two wood choices with pewter hardware.

SOFA	ULTRA LEATHER	ACCENT
		CARPET



Cinnabar w/available Buff UltraLeather™



Rockport w/available Papyrus UltraLeather



Shadow Dance w/available Papyrus UltraLeather



Honey Cherry



Washed Maple

STANDARD GRAPHICS PACKAGE



AVAILABLE DELUXE GRAPHICS PACKAGE



Sedona Bronze Metallic



Sandstone Beige Metallic

Welcome to Winnebago Industries, Inc.

<http://www.winnebagoind.com/>

PRODUCTS RESOURCES COMPANY CLUBS/EVENTS CONTACT DEALERS ONLY [WEB Select a Key Feature](#)

Select a category from above.

Popular Links

- Winnebago RVs
- Itasca RVs
- Key Features
- Dealer Locator

The 2007 coaches have arrived.

WINNEBAGO INDUSTRIES' FEATURED PRODUCTS

Introducing the 2007 Itasca Impulse™

TRUEAIR™
Costs 60% Faster,
While 10% Quieter!

SIRIUS
Available Sirius Satellite Radio.
NA, Canada.

WINNEBAGOIND.COM Visit us on the web for more info on all of our motor homes and a host of web-exclusive content.

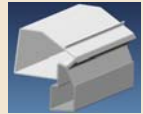
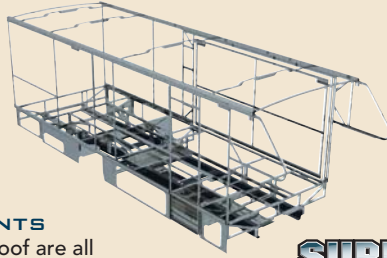


**BUILT BY WINNEBAGO INDUSTRIES.
BUILT TO LAST.**

Itasca motor homes are built by Winnebago Industries, the company that defined motor homes. The company that built its reputation on quality construction. The company that transformed the motor home concept into a way of life.

Today, Winnebago Industries brings that reputation for quality and its 48-year history of motor home innovation to the design and construction of every motor home. It's all a part of SuperStructure[®], our exclusive system of proprietary structural components that instills each motor home with improved strength and durability.

SOLID FOUNDATION Steel and aluminum truss work provides a solid, flat foundation for floors and sidewalls. Winnebago Industries engineers also take special care to distribute the weight of components to ensure proper handling and stability.



INTERLOCKING JOINTS

The floors, sidewalls and roof are all integrally connected using interlocking joints. This creates a coach body that acts as a cohesive unit for improved strength and durability.



WEB

E-COATING Winnebago Industries employs an exclusive 12-stage automotive-style dip tank process to apply an advanced electrodeposition coating on critical steel components for unmatched corrosion protection.

THERMO-PANEL[®] SIDEWALLS Invented by Winnebago Industries, Thermo-Panel construction combines a fiberglass panel, high-density, block-foam insulation and aluminum support structures to create some of the most durable, lightweight sidewalls in the industry.

ATTENTION TO DETAIL Whether it's sending every coach through a high-pressure water tunnel to check for leaks or labeling each individual wire and bar-coding parts to save time and frustration during service, Winnebago Industries considers every detail to ensure your Itasca motor home provides you with years of pleasure.

STRONG AS STEEL Appliances are secured directly to embedded steel plates for added safety.



1-year-old Itasca fiberglass roof



1-year-old competitor's rubber roof

FIBERGLASS ROOF The Spirit features a crowned, one-piece fiberglass roof, backed with a 10-year limited parts-and-labor roof skin warranty. Fiberglass offers superior strength, attractiveness and durability over the rubber roofs found on many competitive models which can chalk, streak and degrade over time. Fiberglass also provides increased puncture and tear resistance.



TAKE A TOUR We're proud of our process, state-of-the-art facilities and the people who make Winnebago Industries number one. We invite you to visit our factory in Forest City, Iowa, for a first-hand look at the dedication and technology behind every motor home we build.



RECOGNIZED QUALITY The Recreation Vehicle Dealer Association annually rates RV manufacturers and awards the Quality Circle award to manufacturers who provide exceptional products, service and support. Winnebago Industries is proud to be the only manufacturer to receive this award every year since its inception.



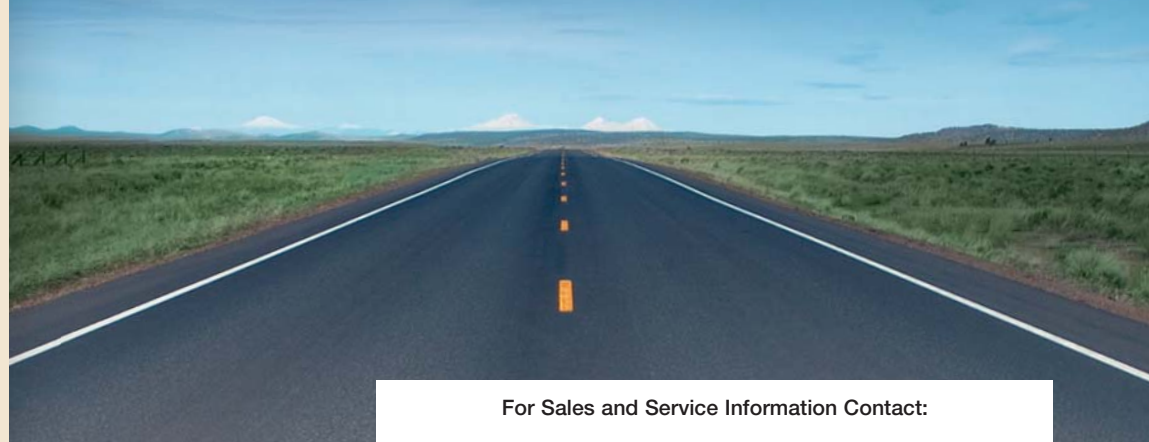
COMMITTED TO SERVICE We back our motor homes with the industry's best service after the sale.

- 12-month/15,000-mile basic limited warranty
- 36-month/36,000-mile limited warranty on structure
- Standard 10-year limited parts-and-labor roof skin warranty
- Complimentary 24-hour roadside assistance program
- TripSaver Fast Track Parts. TripSaver guarantees that in-stock warranty parts ship directly to your dealer within 24 hours.
- National dealer service network



WIT CLUB Itasca owners are like family. Joining the Winnebago-Itasca Travelers is a great way to meet and travel with other Itasca enthusiasts. Members enjoy:

- Caravans and rallies
- Local and state group activities
- RV travel benefits



For Sales and Service Information Contact:



Built proudly by



NYSE listing: WGO

©2006 Winnebago Industries, Inc.

Printed in USA

Seat belts are your most important hookup. Always buckle up.