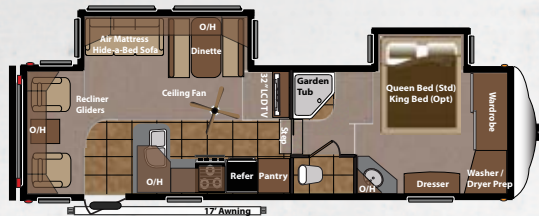
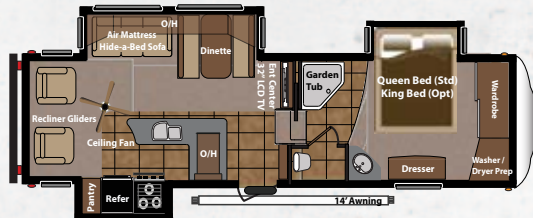


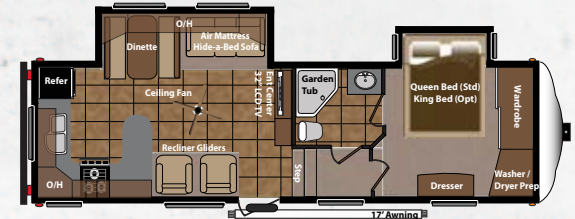
MOUNTAINEER EDITION



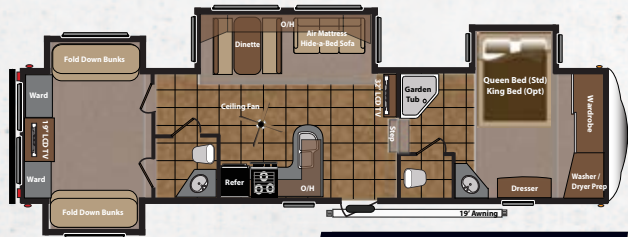
285RLD LENGTH: 32' 1"
WEIGHT: 9,675
HITCH: 2,185



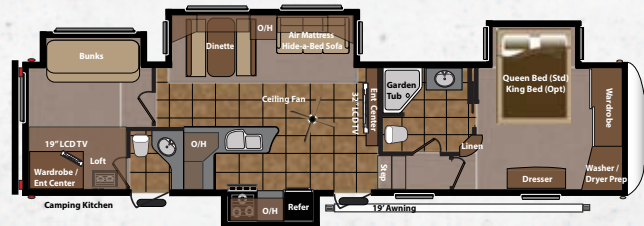
290RLT LENGTH: 32' 1"
WEIGHT: 10,105
HITCH: 2,045



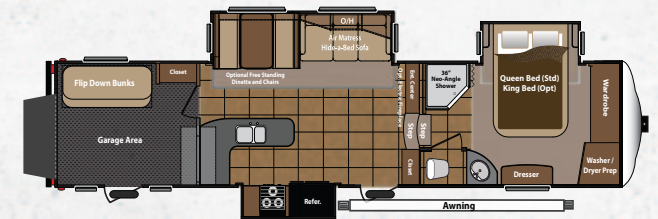
295RKD LENGTH: 34' 2"
WEIGHT: 10,160
HITCH: 2,145



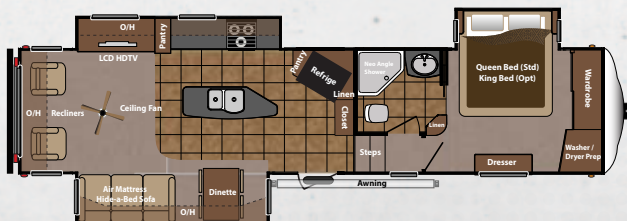
345DBQ LENGTH: 38' 3"
WEIGHT: 12,155
HITCH: 2,280



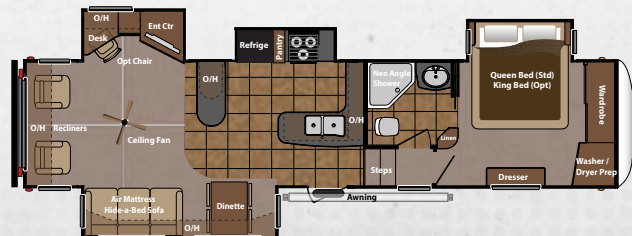
346LBQ LENGTH: 39' 1"
WEIGHT: 12,230
HITCH: 2,205



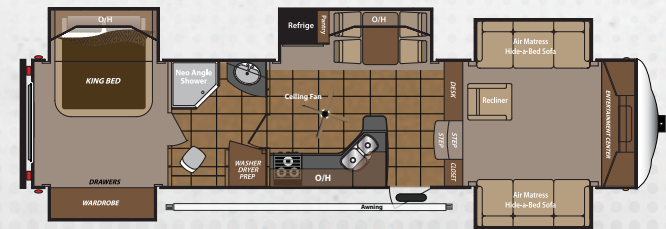
NEW! **357THT** LENGTH: 39' 1"
WEIGHT: 11,185
HITCH: 2,585



NEW! **358RLT** LENGTH: 37' 7"
WEIGHT: 11,410
HITCH: 2,055



NEW! **362RLQ** LENGTH: 37' 7"
WEIGHT: 11,605
HITCH: 2,055



NEW! **375FLF** LENGTH: 38' 4"
WEIGHT: 11,880
HITCH: 2,120

keystone-mountaineer.com

Product information is as accurate as possible as of the date of publication. Features and specifications are subject to change without notice. Please also consult Keystone's Web site at keystonerv.com for more current product information and specifications. Jan 2012



**Keystone RV
Company**

WWW.KEYSTONERV.COM

2642 HACKBERRY DRIVE • P.O. BOX 2000 • GOSHEN, IN 46527 • 574.535.2100

2013 STANDARD FEATURES

- » Medallion hi-gloss sidewalls
- » Aluminum Wheels with MOR/ryde® CRE 3000 suspension
- » Aluminum Wheels with MOR/ryde® LRE 4000 suspension (357 and 375 only)
- » 19-inch bedroom HD LCD TV
- » Wire and frame for 2nd A/C
- » Power vent fan (location varies by model)
- » 32-inch HD LCD TV in garage (357 Only)
- » 30-inch OTR microwave oven with built in range hood
- » Solid surface kitchen counter top with flush mount sink covers and stainless steel sink with pull-out sprayer faucet
- » Arched stamped steel roof rafters with welded, aluminum framed walls and floors
- » 6-feet 6-inch tall main slide outs (2 inches taller) with larger overhead cabinets.
- » Slam latch pass thru storage compartment doors with gas struts
- » Washer/dryer prep in every floor plan

HICKORY EDITION PACKAGE

- » 75/amp power converter
- » Max Turn front cap and radius frame with Hitch Vision™
- » Enormous drop frame pass thru storage compartment
- » Electric rear stabilizer jacks
- » 12v electric awning
- » 32-inch HD LCD TV (285, 290, 295, 345, 346, 357, 362)
- » 40-inch HD LCD TV (358, 375)
- » Full extension drawer guides
- » Hickory cabinet doors and drawers

MOVING TO MONTANA PACKAGE

- » Queen (60 by 80-inch) innerspring pillow top mattress
- » Fabric bedroom headboard
- » Two bedside windows in the slide out
- » Reading light over bed
- » Air mattress hide-a-bed sofa w/ electric pump
- » 12v FM/CD/DVD home entertainment system with living area surround sound, bedroom speakers and exterior speakers
- » HD Digital TV antenna with booster
- » RG-6 satellite prep
- » 50 AMP service
- » 10 gallon DSI gas/electric water heater
- » Deluxe porcelain toilet
- » Sky dome over the tub
- » 8 cubic foot double door refrigerator
- » High output range with automatic igniter
- » Range cover
- » 22-inch oven with broiler
- » Cabinet toe kicks
- » Electric front jacks
- » Fold away entry handle
- » Rear roof ladder
- » Dual patio security lights
- » Black tank flush
- » Water heater bypass
- » Outside shower with quick connect hose
- » Ceiling fan
- » 15,000 BTU air conditioner with quick cool
- » Deep tint safety glass windows
- » Dexter E-Z Lube axles with self adjusting brakes
- » Under mount spare tire and carrier
- » 12 cubic foot four door refrigerator (358 only)

MOUNTAINEER OPTIONS

- » MOR/ryde® hitch pin (357 and 375 only)*
- » Glacier Package with R-38 roof and R-21 floor insulation*
- » Dual pane windows
- » Slide-out Awning Package
- » King size bed with innerspring mattress
- » Free standing dinette with 4 chairs
- » High back desk chair
- » 1st Euro recliner with ottoman (357 only)
- » 2nd Euro recliner with ottoman (357 only)
- » Electric Fireplace (Not available 285 or 295)
- » 2nd 13,500 BTU air conditioner
- » Power vent fan in garage (357 only)*
- » Generator ready (Onan 5.5 kw – LP generator specifications)
- » Onan Marquis Gold 5.5 kw – LP generator (requires generator ready)
- » 12 cubic foot four door refrigerator (290, 357, 362, 375)

**Mandatory Option*



WWW.KEYSTONERV.COM
2642 HACKBERRY DRIVE • P.O. BOX 2000 • GOSHEN, IN 46527 • 574.535.2100



keystone-mountaineer.com

Product information is as accurate as possible as of the date of publication. Features and specifications are subject to change without notice. Please also consult Keystone's Web site at keystone.com for more current product information and specifications. 09/12

