

43.6971° N, 114.3517° W

Newmar | 2020 Dutch Star
Diesel Motor Coach

2020 Dutch Star —

Diesel Motor Coach

NEWMARSM

Say *yes* to adventure.



Where will *your coach* take you?

Thomas waiting for a bite while fly fishing



The Next Level of Luxury — 2020 Dutch Star

In the 2020 Dutch Star, you'll find all the luxurious appointments you demand—and some you might not have expected. A full complement of safety and convenience features includes Comfort Drive™ steering, a tire pressure monitoring system, electronic stability control, and automatic traction control. What's more, the coach is prepped for optional OnGuard™ collision mitigation technology with adaptive cruise control. The full-paint Masterpiece Finish™, shown here in Chatham, is an industry exclusive that adds beauty to the exterior. Thirteen distinctive floor plans are available, and on 40' and 43' coaches, the choice between a Freightliner® or Spartan® chassis is yours to make.

Chatham full-paint Masterpiece™ finish

Nothing but — the Very Best

In the Dutch Star cockpit, six-way power Flexsteel® captain's chairs are covered in Ultrafabric and offer power lumbar, recliner, and footrests. Optional heated seats are also available. To support safe driving, side-view cameras display on the rearview monitor screen, and a 360-degree camera system may be optioned. For added confidence on any journey, you may choose the optional Rand McNally navigation system. Enjoy music, podcasts, or audiobooks on the crystal-clear JBL audio system. And with optional Wi-Fi connectivity, your favorite movies and shows are always available to stream.



Floor plan 4362 with Chatham décor and Carmel Glazed Cherry cabinetry



Feel Right — at Home

A newly designed feature ceiling is the centerpiece of Dutch Star's gracious living room, which may be furnished with dual recliners opposite a Fold-N-Tumble sofa, shown here. Additional configurations are available to suit your needs, and in all rear-bath floor plans, cathedral ceilings add extra height to the space. Entertainment features include a retractable Samsung 50" 4K LED TV with a Sony® Blu-ray® player and a Bose® Solo 5 soundbar. Choose the optional radiant heat beneath the floor tile for welcome coziness in cooler weather—and wherever and whenever you travel, the Penguin™ heat pump air conditioners assure you can relax in comfort. What's more, the available combination desk/dinette, pictured here, offers you the ultimate flexibility.





A Recipe — for Style

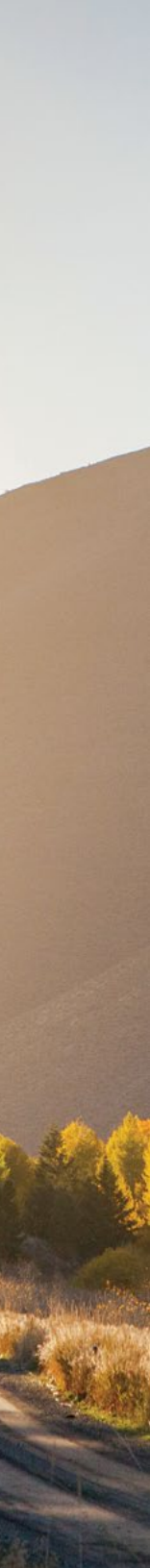
In the well-appointed Dutch Star kitchen, Carmel glazed cherry high-gloss hardwood cabinetry, pictured here, is outfitted with soft-close drawers, while super-polished solid surface countertops further elevate the space. Appliances such as a Whirlpool® brushed aluminum refrigerator, stainless steel convection microwave, and three-burner cooktop come standard, and your choice of optional features includes a dishwasher and a portable induction cooktop. Floor plan 4362 presents you with a pull-out kitchen cabinet and an optional kitchen window that permits even more natural light to fill the space. A spacious pantry with a travel latch is found adjacent to the refrigerator, and an appliance garage keeps your culinary necessities tucked neatly away.





Relaxing and — Refreshing

Offering a sophisticated escape that's all your own, the Dutch Star bedroom is designed for sweet dreams. A tremendously comfortable plush pillow top mattress is offered in either queen or king size, depending upon the floor plan—or you are presented with the option to upgrade to a Sleep Number mattress. Flanked by two hanging wardrobes is an expansive six-drawer dresser with super-polished countertops. Positioned above the dresser, you'll find a Samsung LED television with a Sony® Blu-ray® player, allowing you to enjoy your favorite movies and shows.





Your — Serene Space

Featuring an Aqua Miser shower system, a glass door, and a fold-down seat, discover a 50" x 34" shower, shown here. Its solid surface walls boast beautiful mosaic inserts, a new design feature for 2020. Positioned opposite the shower is a vanity that presents you with ample storage and a new vessel sink. Furthermore, floor plan 4362 is outfitted with a spacious walk-in closet that offers adjustable shelving, and for added convenience, you may select the optional laundry station with a two-piece washer and dryer. A gracious mid-ship bathroom—perfect for guests—is found in many of the Dutch Star floor plans.





2015 Toffee décor shown



Roam without— Compromise

With extras like an electric fireplace set below a retractable Samsung® 4K TV, Ultrafabrics®-covered furniture, full-tile slideouts, and an available Fisher & Paykel® dishwasher, Dutch Star 4311 solidifies its position as the world's most luxurious fully accessible motor coach. What's more, a standard power-adjustable kitchen table can be positioned in front of bench seat, while a roll-in shower, lowered switches and appliances, and widened aiseways all come standard.



Star of — the Show

The Dutch Star's exterior is capable of acting as an outdoor living space courtesy of its Girard G2000 power side awning. You are also presented with the option to add a door-side awning, or to upgrade to a complete Nova awning package. An optional patio hammock package is also available. For your security and convenience, the keyless entry door offers a touchpad and doorbell. And loading and unloading is easier than ever thanks to the extra 2" of height now built into the exterior baggage doors, which feature side hinges and power locks. Those who love to play host may wish to select the optional outdoor entertainment center with its Samsung 43" 4K LED TV and soundbar. Reliable power is provided by the standard Cummins Onan® diesel generator.

Exterior and Interior Décor



CHATHAM EXTERIOR

Awning Color: Charcoal Tweed



NORFOLK EXTERIOR

Awning Color: Linen Tweed



VELOCITY EXTERIOR

Awning Color: Linen Tweed



WYLIE EXTERIOR

Awning Color: Charcoal Tweed



CHATHAM INTERIOR

a. Furniture/Fabric b. Flooring c. Counter Top



NORFOLK INTERIOR

a. Furniture/Fabric b. Flooring c. Counter Top



VELOCITY INTERIOR

a. Furniture/Fabric b. Flooring c. Counter Top



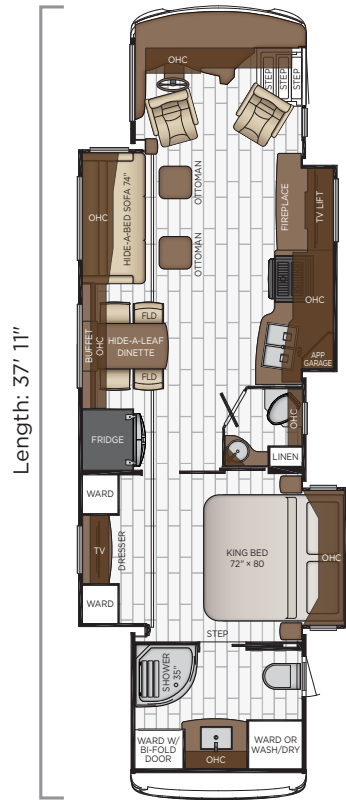
WYLIE INTERIOR

a. Furniture/Fabric b. Flooring c. Counter Top



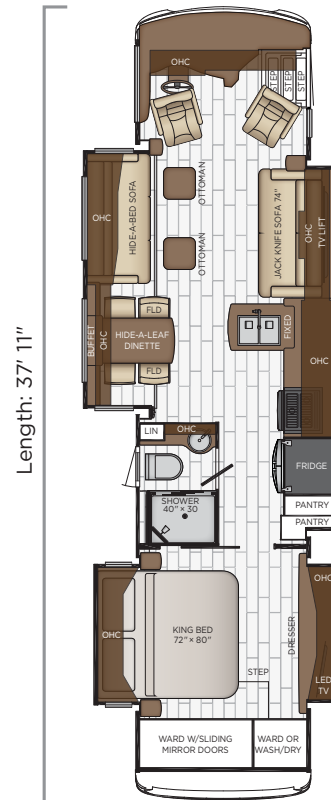
*Available in High Gloss or Matte Finish

Dutch Star



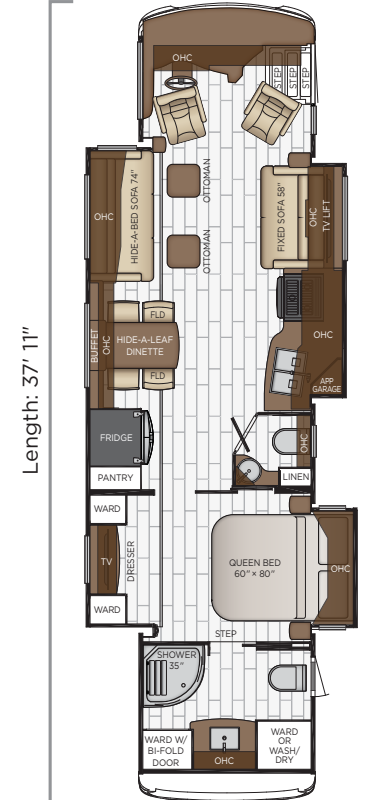
3709

| | |
|---------------------|------------|
| Length | 37'11" |
| Width | 101.5" |
| App. Overall Height | 12'10" |
| Interior Width | 95.5" |
| Interior Height | 83" |
| Grey Tank | 65 gal. |
| Sewage Tank | 45 gal. |
| Water Tank | 105 gal. |
| Propane Tank | 22 gal. |
| Furnace | 50,000 btu |



3717

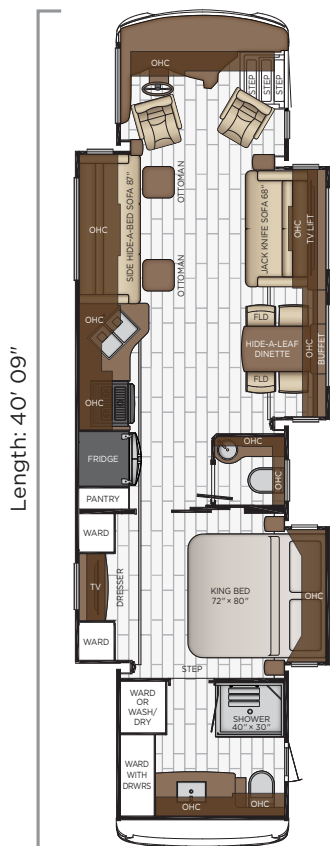
| | |
|---------------------|------------|
| Length | 37'11" |
| Width | 101.5" |
| App. Overall Height | 12'10" |
| Interior Width | 95.5" |
| Interior Height | 83" |
| Grey Tank | 65 gal. |
| Sewage Tank | 45 gal. |
| Water Tank | 105 gal. |
| Propane Tank | 22 gal. |
| Furnace | 50,000 btu |



Floor Plans

3736

| | |
|---------------------|------------|
| Length | 37'11" |
| Width | 101.5" |
| App. Overall Height | 12'10" |
| Interior Width | 95.5" |
| Interior Height | 83" |
| Grey Tank | 65 gal. |
| Sewage Tank | 45 gal. |
| Water Tank | 105 gal. |
| Propane Tank | 22 gal. |
| Furnace | 50,000 btu |



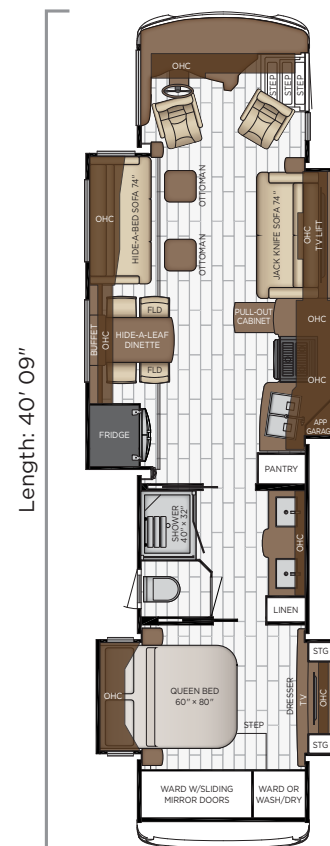
4020

| | |
|---------------------|------------|
| Length | 40'09" |
| Width | 101.5" |
| App. Overall Height | 13'00" |
| Interior Width | 95.5" |
| Interior Height | 83" |
| Grey Tank | 65 gal. |
| Sewage Tank | 45 gal. |
| Water Tank | 105 gal. |
| Propane Tank | 22 gal. |
| Furnace | 50,000 btu |

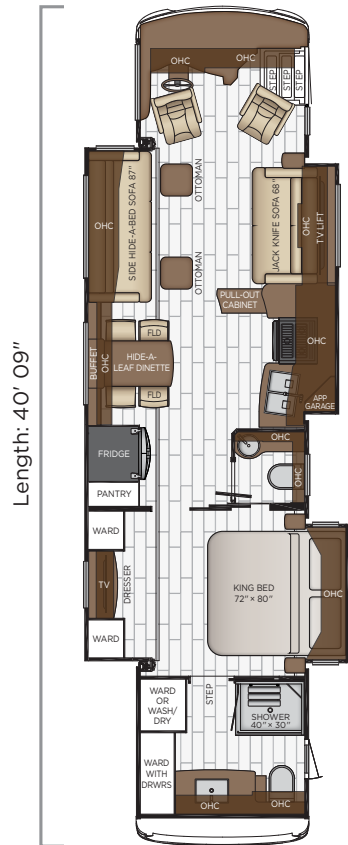


4054

| | |
|---------------------|------------|
| Length | 40'09" |
| Width | 101.5" |
| App. Overall Height | 13'00" |
| Interior Width | 95.5" |
| Interior Height | 83" |
| Grey Tank | 65 gal. |
| Sewage Tank | 45 gal. |
| Water Tank | 105 gal. |
| Propane Tank | 22 gal. |
| Furnace | 50,000 btu |

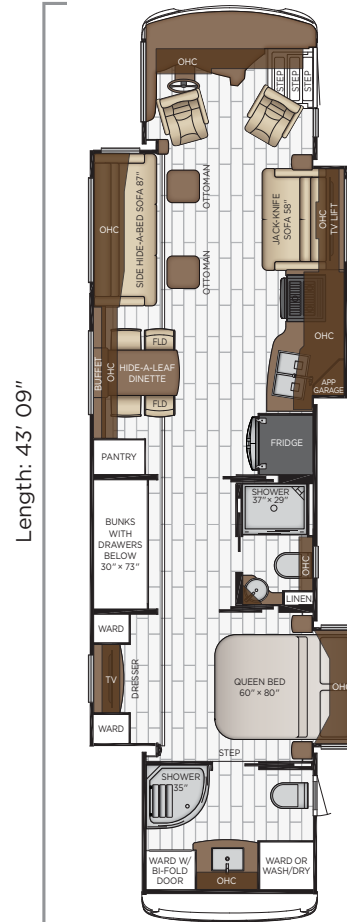


Dutch Star



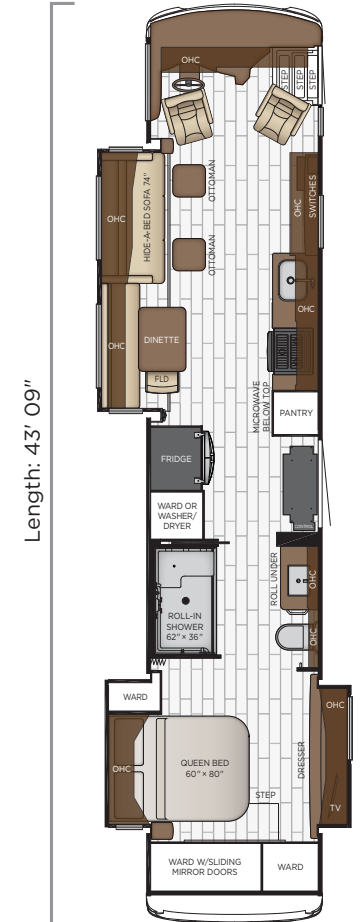
4081

| | |
|---------------------|------------|
| Length | 40'09" |
| Width | 101.5" |
| App. Overall Height | 13'00" |
| Interior Width | 95.5" |
| Interior Height | 83" |
| Grey Tank | 65 gal. |
| Sewage Tank | 45 gal. |
| Water Tank | 105 gal. |
| Propane Tank | 22 gal. |
| Furnace | 50,000 btu |



4310

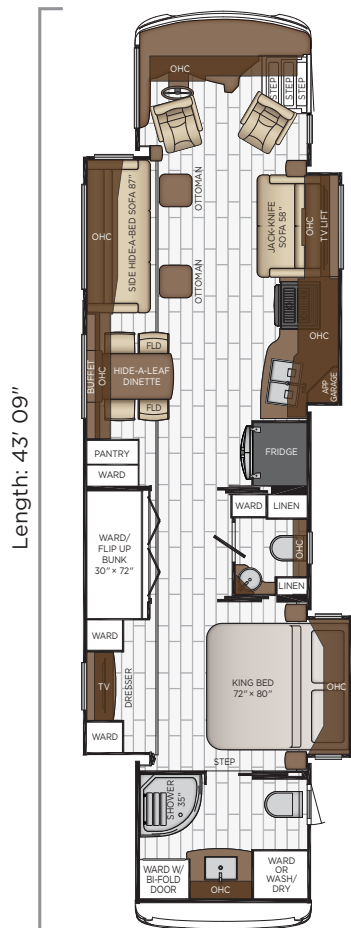
| | |
|---------------------|------------|
| Length | 43'09" |
| Width | 101.5" |
| App. Overall Height | 13'00" |
| Interior Width | 95.5" |
| Interior Height | 83" |
| Grey Tank | 65 gal. |
| Sewage Tank | 45 gal. |
| Water Tank | 105 gal. |
| Propane Tank | 22 gal. |
| Furnace | 85,000 btu |



Floor Plans

4311

| | |
|---------------------|------------|
| Length | 43'09" |
| Width | 101.5" |
| App. Overall Height | 13'00" |
| Interior Width | 95.5" |
| Interior Height | 83" |
| Grey Tank | 65 gal. |
| Sewage Tank | 45 gal. |
| Water Tank | 105 gal. |
| Propane Tank | 22 gal. |
| Furnace | 50,000 btu |



4326

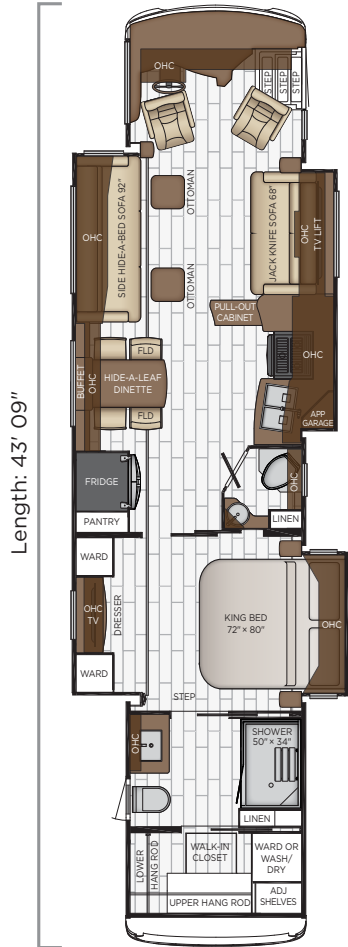
| | |
|---------------------|------------|
| Length | 43'09" |
| Width | 101.5" |
| App. Overall Height | 13'00" |
| Interior Width | 95.5" |
| Interior Height | 83" |
| Grey Tank | 65 gal. |
| Sewage Tank | 45 gal. |
| Water Tank | 105 gal. |
| Propane Tank | 22 gal. |
| Furnace | 50,000 btu |



4328

| | |
|---------------------|------------|
| Length | 43'09" |
| Width | 101.5" |
| App. Overall Height | 13'00" |
| Interior Width | 95.5" |
| Interior Height | 83" |
| Grey Tank | 65 gal. |
| Sewage Tank | 45 gal. |
| Water Tank | 105 gal. |
| Propane Tank | 22 gal. |
| Furnace | 50,000 btu |

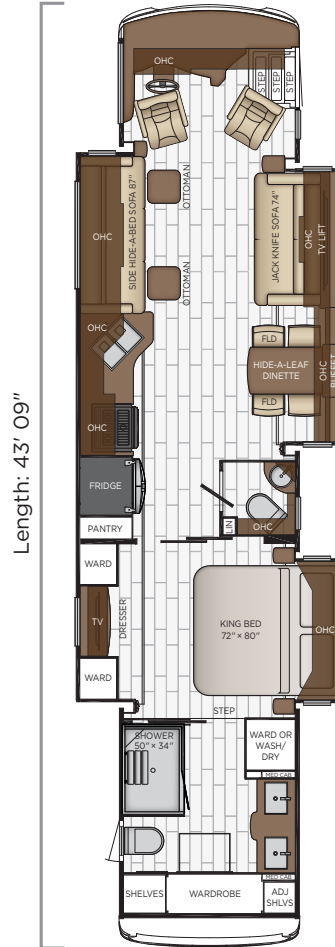
Dutch Star



Length: 43' 09"

4362

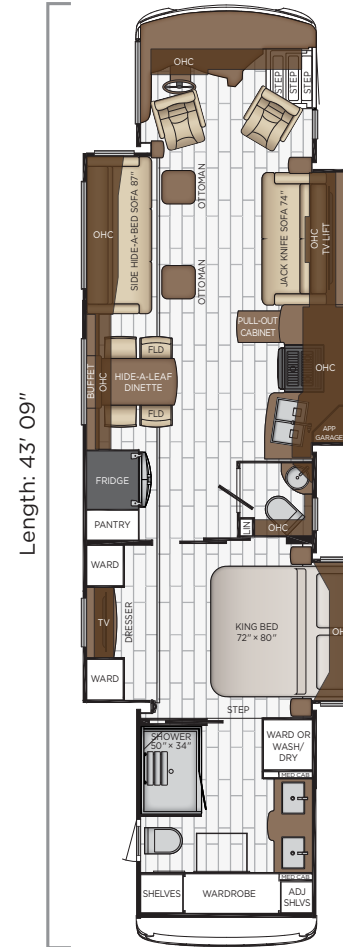
| | |
|---------------------|------------|
| Length | 43'09" |
| Width | 101.5" |
| App. Overall Height | 13'00" |
| Interior Width | 95.5" |
| Interior Height | 83" |
| Grey Tank | 65 gal. |
| Sewage Tank | 45 gal. |
| Water Tank | 105 gal. |
| Propane Tank | 22 gal. |
| Furnace | 50,000 btu |



Length: 43' 09"

4363

| | |
|---------------------|------------|
| Length | 43'09" |
| Width | 101.5" |
| App. Overall Height | 13'00" |
| Interior Width | 95.5" |
| Interior Height | 83" |
| Grey Tank | 65 gal. |
| Sewage Tank | 45 gal. |
| Water Tank | 105 gal. |
| Propane Tank | 22 gal. |
| Furnace | 50,000 btu |



Length: 43' 09"

4369

| | |
|---------------------|------------|
| Length | 43'09" |
| Width | 101.5" |
| App. Overall Height | 13'00" |
| Interior Width | 95.5" |
| Interior Height | 83" |
| Grey Tank | 65 gal. |
| Sewage Tank | 45 gal. |
| Water Tank | 105 gal. |
| Propane Tank | 22 gal. |
| Furnace | 50,000 btu |



Dutch Star

Dutch Star

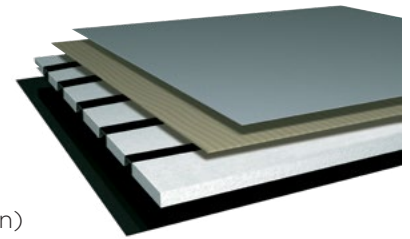
NEWMAR

Quality You Can Feel

Like a fine home, the 2020 Dutch Star is framed 16 inches on center, and is covered by a fiberglass roof with an integrated gutter rail.

BASEMENT

Cargo Liner
 3/8" Floor Decking
 1 1/4" Bead Foam
 Galvanized Sheeting (Prevents Distortion)



| FREIGHTLINER | | | | | | | | | | | |
|--------------|-----------|------------|-----------|------------|------------|-----------|-----------|-----------|-----------|-----------|-----------|
| FLOOR PLAN | ENGINE HP | AXLE RATIO | FUEL CAP. | WHEEL BASE | FRONT GAWR | REAR GAWR | TAG GAWR | GVWR | GCWR | APP. UVW | APP. NCC |
| 3709 | 450 | 4.78 | 100 gal. | 242 | 15200 lb. | 24000 lb. | n/a | 39200 lb. | 49200 lb. | 34300 lb. | 4900 lb. |
| 3717 | 450 | 4.78 | 100 gal. | 242 | 15200 lb. | 24000 lb. | n/a | 39200 lb. | 49200 lb. | 33900 lb. | 5300 lb. |
| 3736 | 450 | 4.78 | 100 gal. | 242 | 15200 lb. | 24000 lb. | n/a | 39200 lb. | 49200 lb. | 34300 lb. | 4900 lb. |
| 4020 | 450 | 4.78 | 100 gal. | 252+TAG | 17000 lb. | 20000 lb. | 12000 lb. | 49000 lb. | 64000 lb. | 37600 lb. | 11400 lb. |
| 4054 | 450 | 4.78 | 100 gal. | 252+TAG | 17000 lb. | 20000 lb. | 12000 lb. | 49000 lb. | 64000 lb. | 36200 lb. | 12800 lb. |
| 4081 | 450 | 4.78 | 100 gal. | 252+TAG | 17000 lb. | 20000 lb. | 12000 lb. | 49000 lb. | 64000 lb. | 37600 lb. | 11400 lb. |
| 4310 | 450 | 4.78 | 150 gal. | 288+TAG | 19000 lb. | 20000 lb. | 12000 lb. | 51000 lb. | 66000 lb. | 40700 lb. | 10300 lb. |
| 4311 | 450 | 4.78 | 150 gal. | 288+TAG | 19000 lb. | 20000 lb. | 12000 lb. | 51000 lb. | 66000 lb. | 38000 lb. | 13000 lb. |
| 4326 | 450 | 4.78 | 150 gal. | 288+TAG | 19000 lb. | 20000 lb. | 12000 lb. | 51000 lb. | 66000 lb. | 40400 lb. | 10600 lb. |
| 4328 | 450 | 4.78 | 150 gal. | 288+TAG | 19000 lb. | 20000 lb. | 12000 lb. | 51000 lb. | 66000 lb. | 39800 lb. | 11200 lb. |
| 4362 | 450 | 4.78 | 150 gal. | 288+TAG | 19000 lb. | 20000 lb. | 12000 lb. | 51000 lb. | 66000 lb. | 40000 lb. | 11000 lb. |
| 4363 | 450 | 4.78 | 150 gal. | 288+TAG | 19000 lb. | 20000 lb. | 12000 lb. | 51000 lb. | 66000 lb. | 40600 lb. | 10400 lb. |
| 4369 | 450 | 4.78 | 150 gal. | 288+TAG | 19000 lb. | 20000 lb. | 12000 lb. | 51000 lb. | 66000 lb. | 40300 lb. | 10700 lb. |
| SPARTAN | | | | | | | | | | | |
| FLOOR PLAN | ENGINE HP | AXLE RATIO | FUEL CAP. | WHEEL BASE | FRONT GAWR | REAR GAWR | TAG GAWR | GVWR | GCWR | APP. UVW | APP. NCC |
| 4020 | 450 | 4.88 | 100 gal. | 252+TAG | 17000 lb. | 20000 lb. | 12000 lb. | 49000 lb. | 64000 lb. | 37800 lb. | 11200 lb. |
| 4054 | 450 | 4.88 | 100 gal. | 252+TAG | 17000 lb. | 20000 lb. | 12000 lb. | 49000 lb. | 64000 lb. | 36900 lb. | 12100 lb. |
| 4081 | 450 | 4.88 | 100 gal. | 252+TAG | 17000 lb. | 20000 lb. | 12000 lb. | 49000 lb. | 64000 lb. | 37600 lb. | 11400 lb. |
| 4310 | 450 | 4.88 | 150 gal. | 288+TAG | 19000 lb. | 20000 lb. | 12000 lb. | 51000 lb. | 66000 lb. | 40400 lb. | 10600 lb. |
| 4311 | 450 | 4.88 | 150 gal. | 288+TAG | 19000 lb. | 20000 lb. | 12000 lb. | 51000 lb. | 66000 lb. | 38100 lb. | 12900 lb. |
| 4326 | 450 | 4.88 | 150 gal. | 288+TAG | 19000 lb. | 20000 lb. | 12000 lb. | 51000 lb. | 66000 lb. | 40400 lb. | 10600 lb. |
| 4328 | 450 | 4.88 | 150 gal. | 288+TAG | 19000 lb. | 20000 lb. | 12000 lb. | 51000 lb. | 66000 lb. | 39900 lb. | 11100 lb. |
| 4362 | 450 | 4.88 | 150 gal. | 288+TAG | 19000 lb. | 20000 lb. | 12000 lb. | 51000 lb. | 66000 lb. | 40000 lb. | 11000 lb. |
| 4363 | 450 | 4.88 | 150 gal. | 288+TAG | 19000 lb. | 20000 lb. | 12000 lb. | 51000 lb. | 66000 lb. | 40500 lb. | 10500 lb. |
| 4369 | 450 | 4.88 | 150 gal. | 288+TAG | 19000 lb. | 20000 lb. | 12000 lb. | 51000 lb. | 66000 lb. | 40200 lb. | 10800 lb. |

The content in our literature depicts and describes products that are subject to change. For the most recent images and information, please visit NewmarCorp.com.

Lengths, heights, widths and dry weights are approximate. Weight will vary based on optional equipment added to the above base weight.

GAWR: Gross Axle Weight Rating is the maximum permissible weight for an axle.

GVWR: Gross Vehicle Weight Rating is the maximum permissible weight for a fully loaded motor coach.

GCWR: Gross Combination Weight Rating is the value specified by the manufacturer of the vehicle as the maximum allowable loaded weight of this motor coach and any towed trailer or towed vehicle.

UVW: Unloaded Vehicle Weight is the weight of this motor coach as built at the factory with full fuel, engine oil and coolants. Does not include cargo, fresh water, propane gas or dealer-installed accessories.

NCC: Net Carrying Capacity is the maximum weight of all occupants, including the driver, personal belongings, food, fresh water, waste water, propane gas, tools, tongue weight of towed vehicle, dealer-installed accessories, etc., that can be carried by the motor coach.

Specifications supplied by the chassis manufacturer.

Dutch Star R-Values:

Roof R-Value = 24

Sidewall R-Value = 11

Floor R-Value = 16

Basement R-Value = 4

Features and Options



Dutch Star Dash

EXTERIOR



EXTERIOR FEATURES

Full-Paint Masterpiece Finish™ with Clearcoat Finish and Diamond Shield Protection on Front Cap

Convex Chrome Exterior Mirrors with Defrost, Remote Control & Turn Signal Indicators

Chrome Power Baggage Door Locks, Keyless Entrance Door with Touchpad & Doorbell

Entrance Door with Automatic Step

Rear Hitch for Towing Car

Assist Handle at Entrance Door

Mud Flaps

Rear Protective Tow Guard with Stainless Steel Newmar Name Cutout

Undercoating

Hydraulic Leveling Jacks

Stainless Steel Kick Panel at Entrance Door

Hammock Backer

Storage Bins in Pegboard Compartment

Wheelchair Lift*

OPTIONS

Patio Hammock Package

Large Storage Tray with Access from One Side

Pass-Through Storage Tray with Access from Either Side

Power Pass-Through Storage Tray with Access from Either Side on 4311

Baggage Door Stainless Steel Trim Kit

Flagpole Bracket

CONSTRUCTION FEATURES

Fiberglass Roof and Integrated Gutter Rail

Gelcoated Fiberglass Exterior Sidewalls, Front and Rear Caps

Aluminum-Frame Sidewalls & Roof Construction, 16" on Center

5/8" Foam Insulation Laminated in Sidewalls & Ceiling

Polar Pak R19 Batten Insulation on Roof

Automatic Lock Arms on Non-Hydraulic Slideout Rooms-Paddle Style

WINDOWS, AWNINGS & VENTS

Frameless Double-Pane Tinted Safety Glass Windows

Fan-Tastic® Vent with Rain Sensor in Kitchen and Bathroom

Hardwood Louvered Cover on Fan-Tastic® Vent in Kitchen

Skylight Above Shower*

Girard G2000 Power Side Awning with Wind Sensor, Remote Control & LED Lights

Dometic Slideout Covers & Power Entrance Door Awning with LED Lights

One-Piece Tinted Windshield



Egress Door with Ladder System

Driver Side Power Window

OPTIONS

Additional Girard G2000 Side Awning on Door Side

Girard Package-Two Nova Side Awnings, Slideout Covers, Entrance Door & Power Window Awnings

Bunk Windows

Kitchen Window

Two Nova Side Awnings

Screen Door Over Wheelchair Lift Area on 4311

Dometic 9000 Window Awning

CHASSIS FEATURES

Freightliner® 450Hp on 37' Floor Plan

Freightliner® Tag Axle 450Hp on 40'-43' Floor Plans

Freightliner® V-Ride Drive Axle Suspension

Aluminum Wheels

Electronic Chassis Information Center in Dash

Cruise Control

Comfort Drive™ Steering with Power Column & Adjustable Control

Manual Tilt/Telescope Steering Wheel with Freightliner® Drive Tech

Recessed Fuel Fills with Crossover to Fill from Either Side

Back-Up Alarm

Antilock Braking System

Chassis Battery Disconnect

Automatic Traction Control

Electronic Stability Control

Glass Dash Instrument Panel

Prep for OnGuard Collision Mitigation Adaptive Cruise System

Tire Pressures Monitoring On Non-Tag & Tag Axle Chassis

OPTIONS

Spartan® K2 Tag Axle 450Hp on 40'-43' Floor Plans with Manual Tilt/Telescope Steering Wheel with Spartan® VIP Smart Wheel

OnGuard Collision Mitigation Adaptive Cruise System with Adj. Following Distance Control on Freightliner or Spartan Chassis

AIR CONDITIONING & HEATING

Two 15M Penguin™ Heat Pump Air Conditioners on 37' and 40' Models

Three 15M Penguin Heat Pump Air Conditioners, Energy Management System, and 10kW Onan Generator on 43' Floor Plans

Hydronic Zone Diesel Heat with Continuous Hot Water

Dash Heater and Air Conditioner

Driver & Passenger Dash Overhead Ventilation System

Wall-Mounted Sensors for Heating and Air Conditioning

Roof Air Conditioning Drainage System

OPTIONS

Electric Radiant Heat Installed Below Main Floor Tile

ELECTRICAL FEATURES

8.0 kW Cummins Onan® Diesel Generator on Slides 37"-40" Floor Plans

10.0 kW Onan Generator on Slides 43'

50 Amp Electrical Service with Flexible Cord with Automatic Transfer Switch

Six 6-Volt House Batteries on Pullout Tray

Battery Disconnect Switch for House Battery

10 Watt Solar Panel to Charge Chassis Battery

12 Volt Auxiliary Receptacle on Dashboard

Emergency Engine Start Switch

Engine Block Heater

Energy Management System

Exterior Security Lights

Mid-Ship Side Turn Signals

LED Lights Recessed in Ceiling and Underneath Overhead Cabinets

Accent Lights in Slideout Fascia Trim

LED lights in Pantry to Come on When Door is Open

Lights in Exterior Storage Compartments on Automatic Switches

LED Lights Installed Under Door Side Slideouts

Manually Operated Hold-To-Run Slideout Switch

Automatic Generator Start on Low Battery or Temperature Setting

Cable TV Connection

Interior Courtesy Lights

Lights in Wardrobe

Reading Lights at Head of Bed-Dimmable with Adjustable Aim

USB Charger at Dinette & Bedroom Nightstand

USB Outlet at Dash for Driver Use

Power Rewind Reel with 50' Cord*

KIB Backlit Switch Plates for Interior Lighting

KIB Switches for Interior Lights

Spare Fuses in the Chassis and House Fuse Panels

Wireless Phone Charger Pad in Driver Area

110 Volt Recept in Bed Overhead with Two Pass-Through Ports

110 Volt/USB at Head of Each Bunk*



OPTIONS

Four Flexible 100 Watt Solar Panels on Roof

Recessed Docking Lights

Solar Prep Rated with 6-Gauge Wire Run from Roof to House Battery Compartment

Transfer Switch with Surge Protector

PLUMBING & BATH FEATURES

Demand Water System

Sewage Holding-Tank Rinse

Dometic® 321 China Bowl Stool or Macerator Stool*

Solid Surface Shower Walls and Shower Pans with Glass Door*

Fold-Down Shower Seat

Water Filter for Entire Unit

Exterior Shower

Auto Fill Water Works Compartment

Power Water Hose Reel

Systems Monitor Panel

Aqua Miser Shower System

OPTIONS

Assist Handle in Shower

Hot Water Line to Generator Area*

RV Sanicon Turbo System

INTERIOR FEATURES

Designer Feature Ceiling and Cathedral Ceiling with Added Height on Rear Bath Floor Plans*

Tile Floor in Kitchen, Bathroom, Bedroom and Living Area

Interior Assist Handle at Main Entry Door

Quilted Bedspread with Accent Pillows

Decorative Wall Art

Hardwood Raised Panel Interior Passage Doors

Dash Panel Color Coordinated ABS

Power Stepwell Cover

MCD Window Shades

MCD Power Shades at Windshield and Manual Shades at Driver & Passenger Side Windows

Wastebasket in Kitchen Base Under Sink

OPTIONS

Safe Located in Bedroom Wardrobe

MCD Power Window Shades with Remote Control

Shoe Storage Shelves Recessed into Rear Cap Wardrobe



CABINETS & FURNITURE

Bermuda Glazed Maple Hardwood Cabinets with Mitered Raised Panel Doors with Matte Finish

Concealed Hinges on Cabinet Doors

Soft-Close Cabinet Drawers

Lifts on Bed Top

Passenger Seat Work Station

Super Polished Solid Surface Countertop in Bathroom and Bedroom

Super Polished Solid Surface Countertop in Kitchen with Undermounted Stainless Steel Sink & Sink Covers

Pullout Pantry Shelves with Travel Latch on Pantry Doors*

Drawers with Full Extension Guides

Flexsteel® Ultrafabric on Front Seats

Front Seats Six-Way Power, Power Lumbar, Recliner and Footrest

Plush Pillow Top Mattress

Dinette with Power Adjusted Table, Bench Seat and a Folding Chair on Wheelchair Accessible Floor Plan

Extended Rotation Concealed Hinge for Washer/Dryer Cabinet Door

Appliance Garage in Kitchen*

Mesh Cell Phone Holder at Each Bunk Bed*

Two Ottomans*

Molded Silverware Divider Tray

OPTIONS

Bermuda Glazed Maple Hardwood Cabinets with Mitered Raised Panel Doors-High Gloss

Carmel Glazed Cherry Hardwood Cabinets with Mitered Raised Panel Doors-Matte or High Gloss Finish

Sable Glazed Maple Hardwood Cabinets with Mitered Raised Panel Doors-Matte or High Gloss Finish

Wicker Glazed Maple Hardwood Cabinets with Mitered Raised Panel Doors-Matte or High Gloss Finish

One Recliner, Fireplace, Televator, Reading Light*

Two Recliners with Lampstand and Reading Lights*

Two Recliners with Reading Lights*

Two Recliners, Lampstand, Reading Lights, Fold-N-Tumble Door Side and One Large Window

Two Recliners, Lampstand, Reading Lights, Hide-A-Bed with Air Mattress and One Large Window

87" Bunk Sofa*

87" Bunk Sofa with End Table*

Dinette with Rollaway Table, Two Fixed/Two Folding Chairs

Sleep Number R5 Radius Corner Air Mattress

Buffet Dinette with Freestanding Table

Buffet Dinette, Two Fixed/Two Folding Chairs

Buffet Dinette, Two Fixed/Two Folding Chairs on 4311

Buffet Dinette with Rollaway Table with Two Fixed/Two Folding Chairs

Combination Desk/Dinette with Rollaway Table, Two Fixed/Two Folding Chairs

Combination Desk with Buffet Table, Two Fixed/Two Folding Chairs

Combination Desk with Buffet Dinette Table, Two Fixed/Two Folding Chairs

Combination Desk/Dinette with Freestanding Hidden Leaf Table, Two Fixed/Two Folding Chairs

Power Incline Head of Bed with Sleep Number R5 Air Mattress*

Power Incline Retracting Bed Base with Sleep Number R5 Air Mattress*

Queen Bed Layout

Flexsteel® Euro Booth Dinette with 1-6" Table Leaf

Euro Booth Dinette with Extra Leaves, Foldable Table Leg, and Two Folding Chairs

Sofa/Euro Booth Dinette Ensemble with 6" Table Leaf

Sofa/Euro Booth Dinette Ensemble with Extra Leaves, Foldable Table Leg & Two Folding Chairs

Power Theater Seating 74" with Reading Lights

Power Theater Seating 87" with Reading Lights

Heated Driver/Passenger Seats

Undermount Double Bowl Solid Surface Kitchen Sink

Full Height Bed Base on 4311

Bunk Beds to Convert to Wardrobe*

APPLIANCES

Stainless Steel Convection Microwave with Three-Burner Recessed Gas Cooktop

Air Horns

Whirlpool 19.7 Cf. Brushed Aluminum Refrigerator with 2000 Watt Pure Sine Inverter

Prep for Two-Piece Washer/Dryer

Flush Gas Cooktop Cover of Matching Countertop Material

Fireplace in Living Area*

OPTIONS

30" Stainless Steel Convection Microwave in Kitchen Overhead on 4311

All Electric, Flush Mount Induction Cooktop, 8AGM Batteries, & 2800 Watt Inverter

Dishwasher in Drawer with Stainless Steel Front

Central Vacuum with Tool Kit

Dometic 3.77 Cf. Freezer on Pullout Tray in Exterior Compartment

Electric Prep for Freezer (110 & 12 Volt) without Tray

Splendide® Two-Piece Stacked Washer & Dryer

AUDIO, VIDEO & ACCESSORIES

Samsung LED TV and Sony® Blu-ray Disc Player in Living and Bedroom Areas* (TV Sizes Vary Per Floor Plan)



Samsung 50" 4K LED TV on Televator in Living Area*

Dash Radio/CD Player with Harman/JBL 180 Watt Sound System and Subwoofer

Rearview Color Monitor System with Audio

Winegard Rayzar Automatic Digital TV Antenna

Satellite Dish Prep on Roof

Two Bedroom Radio Speakers

TV Jack and 110 Volt Recept in Door Side Exterior Storage Compartment

Bluetooth Microphone for Sony® Dash Radio

Bose Solo 5 Soundbar Sound System

High Definition Component Wiring

Side-View Cameras Displayed onto Rearview Monitor Screen

10 Bc Fire Extinguisher, Smoke Detector, Propane and Carbon Monoxide Detector

OPTIONS

Sirius® Satellite Radio Capability (Does not include monthly subscription)

Samsung 43" 4K LED TV in Front Overhead

50" Televator with Fireplace in Place of Front Overhead TV on 4311

Exterior Entertainment Center in Sidewall with Samsung 43" 4K LED TV and Soundbar

Exterior Entertainment Center in Storage Compartment with Samsung 43" 4K LED TV & Soundbar

Omniview NS360 Camera System*

Winegard Automatic Dome Satellite

Winegard Automatic Open Face SWM Satellite

Winegard Automatic Open Face Satellite

Winegard Automatic Open Face and Winegard In Motion Satellite Dish

Winegard Automatic Open Face SWM Satellite Set for DirecTV and In Motion DirecTV

Winegard Cellular In Motion WiFi

Winegard In Motion Dome Satellite

Prep for Ground Tripod Satellite Dish on Off Door Side with A/B Switch

Two-19" Skyworth TV/DVD Monitors at Each Bunk*

Universal Remote Control

Universal Toll Module

WiFiRanger Sky4 Pack Router

WiFiRanger SkyPro LTE Cellular Router

Xite Dash Radio, 6" Monitor with Rand McNally Navigation

***Check with dealership on floor plan availability.**

The content in our literature depicts and describes products that are subject to change. For the most recent images and information, please visit NewmarCorp.com.

The Newmar Customer Experience

The Newmar difference goes beyond our industry-leading motor coaches to deliver you with an unrivaled ownership experience.



QUALITY FROM THE START

Every Newmar is crafted one at a time by folks who have spent an average of eight years building them. And each coach we assemble must undergo more than 1,000 tests and checks before ever leaving our factory.



CAREFULLY SELECTED DEALERS

We view our dealership network in terms of quality, not quantity. Each of our dealers acts as a partner in our shared mission to exceed your highest of expectations, for an ownership experience that's second to none from day one.



EVERYTHING IN ONE PLACE

As a Newmar owner, you'll find resources specific to your coach through Newgle, an easy-to-use knowledge base that houses everything from user guides to technical support documents.



FRIENDS FOR LIFE

Meet fellow owners through the Newmar Kountry Klub, a top social club for RV travelers that hosts rallies and other special events throughout the U.S. and Canada.



SEAMLESS SERVICE

When you join the Newmar family, we pair you with a dedicated service specialist with expert knowledge of your exact coach. Available 24/7, our service specialists guarantee dealer warranty authorizations within four business hours and ship all in-stock parts the same day, free of charge.



ROCK-SOLID PROTECTION

All models include a one-year/unlimited mileage limited warranty and a five-year, non-transferable structural warranty that covers your coach's superstructure in the event it fails to perform.

Ask your Newmar dealer for more details.



A. ROOF

Fiberglass Roof
 Batten Insulation
 A/C Ducting
 16" on Center Aluminum
 Rafter Framing
 Kraft Paper Vapor Barrier
 5/8" Bead Foam
 3/16" Panel
 Padded Vinyl Overlay

B. SIDEWALL

Interior Wall Panel
 5/8" Bead Foam
 Kraft Paper Vapor Barrier
 Batten Insulation
 Composite One-Piece
 Gelcoat Exterior Sidewall
 Aluminum Framing

C. FLOOR

Tile
 5/8" Floor Decking
 Batten Insulation
 16" on Center Wood Framing
 Polyethylene Moisture Barrier

D. EXTERIOR

15M Penguin™ Heat Pump
 Central Air Conditioners
 One-Piece Bonded Windshield
 Coated Aluminum Wheels
 Frameless, Double-Pane,
 Tinted Safety Glass Windows
 Side-Hinged Baggage Doors
 with Optional Pull-Out Tray

Our Partners

Newmar Quality Begins With The Company We Keep

You deserve class-leading performance from names you can trust. That's why we only work with suppliers dedicated to providing our customers with unrivaled quality, comfort, and support.



We create chemistry

BASF

The Coatings division of BASF is a global expert in the development and production of innovative and sustainable OEM and refinish coatings that deliver solutions beyond your imagination.



INDUSTRIAL FINISHES

Industrial Finishes has supported RV manufacturers for over four decades. The Industrial Finishes paint process delivers uncompromising quality, providing your coach with a true "Masterpiece" finish.



Driven By You

FREIGHTLINER CUSTOM CHASSIS

Freightliner Custom Chassis Corp. (FCCC) is renowned for delivering the industry's best ownership experience through exceptional 24/7 factory-direct support, exceptional ride and handling and developing high-performance innovations such as DRIVETECH. The only RV driving system that prioritizes safety and automotive luxury by putting every command at your fingertips.



RIVERPARK

At RiverPark, we proudly represent the leading brands in consumer electronics—brands you know and trust to provide exceptional quality, innovative technology, and cutting-edge features. Newmar features Samsung's incredible 4K TVs, Xite Infotainment systems featuring Rand McNally, Bose soundbars, and JBL and Infinity premium audio. Step into a 2020 Newmar motorhome and experience dazzling audio and video performance throughout the coach.



FLEXSTEEL®
RECREATION

FLEXSTEEL RECREATION

Flexsteel Recreation offers innovative furniture designed for a life that rarely sits still. Comfortable and space-saving, Flexsteel furniture ensures your RV is always ready for dining, sleeping, or hosting guests.



SPARTAN MOTORS

Spartan Motors is an American company with over 30 years of experience designing and manufacturing the premier motorhome chassis, which provides superior performance, exceptional safety ratings, and industry-leading technology.



Our People Make The Difference

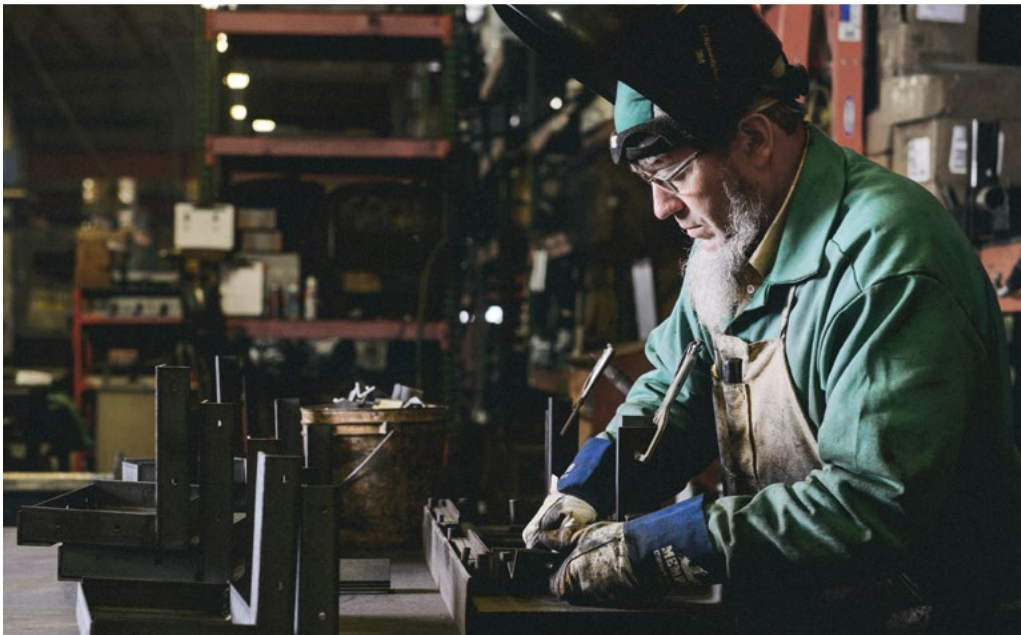
Newmar was founded in 1968 for one simple reason:
to build a better RV.

Since then, we've focused our efforts and energy on creating residential-quality "homes on wheels," complete with handmade cabinetry and designer décors.

And every Newmar is handcrafted one at a time by men and women who have spent an average of eight years assembling them, resulting in superior-quality coaches that fully surpass their mass-produced competition.

Here, we don't just take the responsibility of designing, engineering, and constructing your motorhome seriously, we take it personally. Because in the end, our goal is not to win your trust, but earn it. Not once, but every single time you hit the road.

Join us, and discover the Newmar difference for yourself.



When You Know the Difference.



Newmar Corporation | 355 N Delaware St | PO Box 30 | Nappanee, IN 46550-0030 | 574-773-7791 | Fax 574-773-2895

NewmarCorp.com